

X
X
X
X
X
X
X
X
X
X
X
X
X

A quilted bag with a pink and yellow floral pattern and a white and yellow striped pattern, featuring a button closure. The bag is made of fabric with a quilted design, including a central square patch with a floral pattern and a surrounding border with a striped pattern. The top of the bag is folded over and secured with a button. A second bag with a plaid pattern is partially visible in the background.

× × × × × × × × × × × × × × × × × × × ×

A DIVISION OF AGF

SUMMER swirl

FIESTA fun

FABRICS DESIGNED BY DANA WILLARD



VIVA



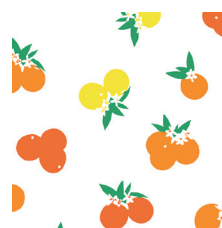
FFN-13840
MEXICAN DRESS MORNING



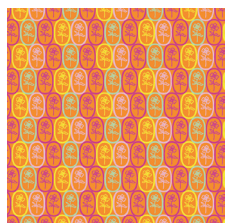
FFN-13841
PAPEL PICADO MESQUITE



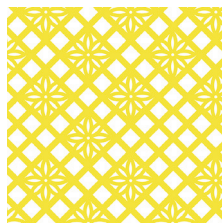
FFN-13842
DESERT FLOR SUMMER



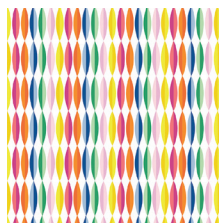
FFN-13843
CITRUS SUNRISE



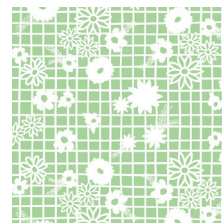
FFN-13844
FLORITA PARTY



FFN-13845
ZOCALO LEMON



FFN-13846
HAPPY STREAMERS

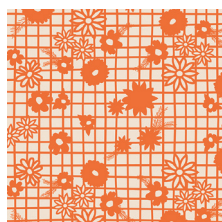


FFN-13848
PAPEL PICADO MENTA

SIESTA



FFN-23840
MEXICAN DRESS MIDNIGHT



FFN-23841
PAPEL PICADO NARANJA



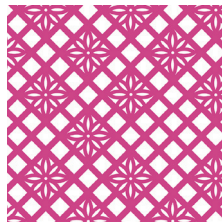
FFN-23842
DESERT FLOR SPRING



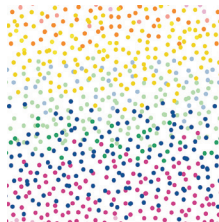
FFN-23843
CITRUS SUNSET



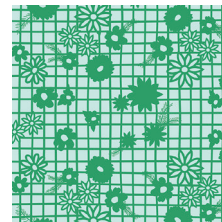
FFN-23844
FLORITA AZUL



FFN-23845
ZOCALO RASPBERRY



FFN-23847
PIÑATA CONFETTI



FFN-23848
PAPEL PICADO VERDE



FEEL THE DIFFERENCE © 2017 Courtesy of Art Gallery Quilts LLC. All Rights Reserved.



FINISHED SIZE | 8" x 16" x 5"

FABRIC REQUIREMENTS

Fabric A	FFN-13842	F8
Fabric B	PE-433	½ yd.
Fabric C	DEN-SB-7002	½ yd.
Fabric D	InsulBright	½ yd.

CUTTING DIRECTIONS

¼" seam allowances are included.

- Four (4) 3" x 3" squares from fabric **A**
- Five (5) 1 ⅞" x 1 ⅞" squares from fabric **A**
- One (1) 4 ⅞" x 4 ⅞" square from fabrics **A, B**
- Three (3) 2 ⅞" x 2 ⅞" squares from fabric **A, B**
- Three (3) 1 ⅞" x 1 ⅞" squares from fabric **B**
- One (1) 8 ½" x 8 ½" square from fabric **B**
- Two (2) 16 ½" x 5 ½" rectangles from fabric **C**
- One (1) 16 ½" x 8 ½" rectangle from fabric **C**
- One (1) 8 ½" x 5 ½" rectangle from fabric **C**

CONSTRUCTION

Sew all rights sides together with ¼" seam allowance.

Start by sewing the Snail's Trail block:

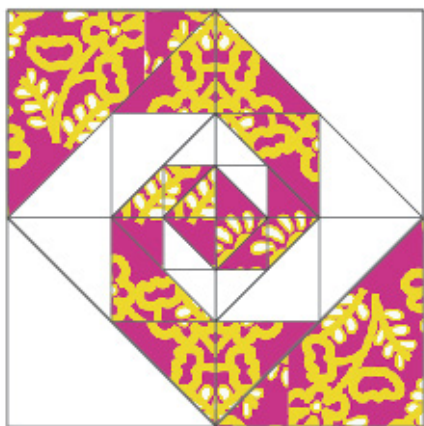


DIAGRAM 1

XXXXXXXXXXXXXXXXXXXXXXXXXXXXXXXXXXXX

- Take five (5) 1 ⅞" x 1 ⅞" squares from Fabric A and Three (3) 1 ⅞" x 1 ⅞" square from Fabric B, and cut them into half square triangles as shown in Diagram 1.



DIAGRAM 2

- Create a square using four (4) half square triangles from Fabric A



DIAGRAM 3

- Take two (2) half square triangles from Fabric A, and two (2) from Fabric B, then follow Diagram 4 for fabric placement and attachment.



DIAGRAM 4

- Take four (4) half square triangles from Fabric A and from Fabric B, and make four (4) triangles.

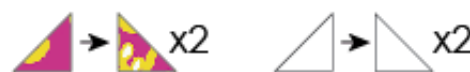


DIAGRAM 5

- Take the four triangles and join them to the block.

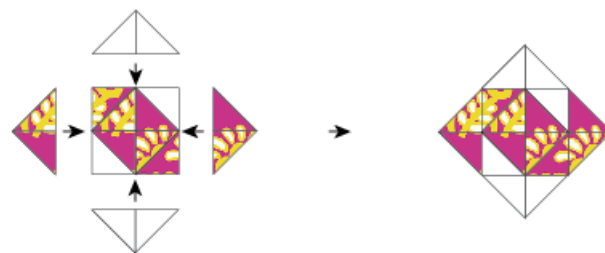


DIAGRAM 6

- Take three (3) 2 ⅞" x 2 ⅞" squares from Fabric A and three (3) 2 ⅞" x 2 ⅞" squares from Fabric B, and cut them into half square triangles



DIAGRAM 7

- Take two half square triangles of each fabric and join them to the block.

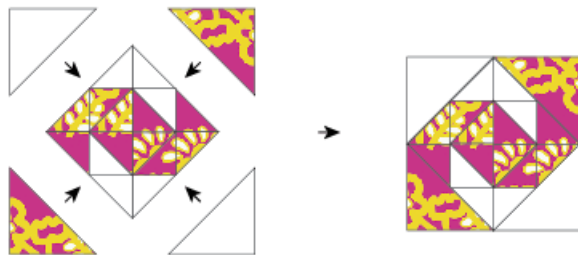


DIAGRAM 8

- Take four (4) $2\frac{3}{8}$ " half square triangles from Fabric A and from Fabric B, and make four (4) triangles



DIAGRAM 9

- Take the four pieces and piece them to the block:

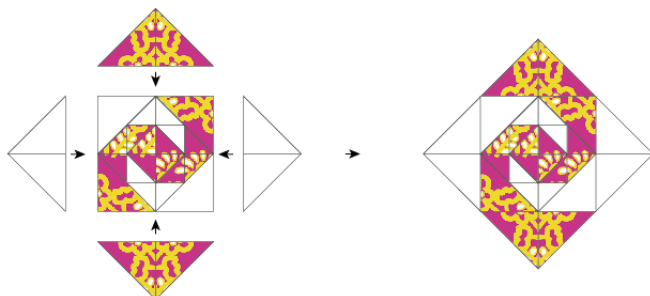


DIAGRAM 10

- Take one (1) $4\frac{7}{8}$ " x $4\frac{7}{8}$ " square from Fabric A and one (1) $4\frac{7}{8}$ " x $4\frac{7}{8}$ " square from Fabric B, and cut them into two half square triangles.



DIAGRAM 11

XXXXXXXXXXXXXXXXXXXXXXXXXXXXXXXXXXXX

- Take the four pieces and join them to the block following the diagram to finalize your Snail's Trail Block!

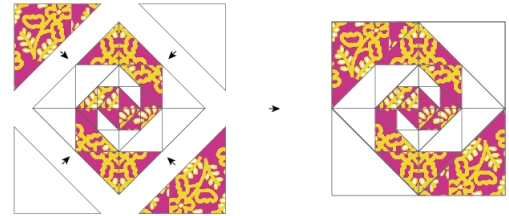


DIAGRAM 12

Now that the block is ready, start constructing the bag.

- Join one (1) $8\frac{1}{2}$ " x $8\frac{1}{2}$ " square to the top of the Snail's Trail block:



DIAGRAM 13

- For this project we use Insul Bright, Fabric D, as batting because it has a technology that will maintain the temperature of the food for a longer time.
- Place Fabric D behind each piece that contains fabric A and/or B.
- The front and back pieces require a larger piece of Fabric D, because they are going to be quilted.

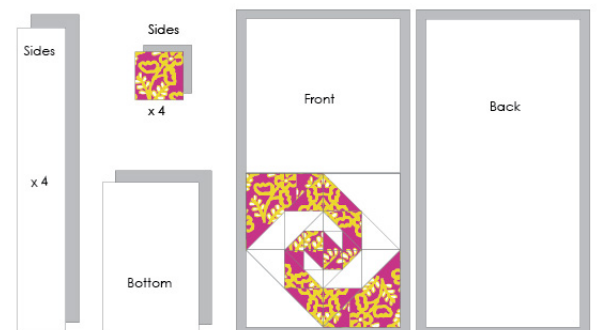


DIAGRAM 14

- To start preparing the sides, take four (4) 16 ½" x 2 ½" rectangles from Fabric D, four (4) 16 ½" x 16 ½" rectangles from Fabric B, four (4) 3" x 3" squares from Fabric A, and four (4) 3" x 3" squares from Fabric D.
- Arrange four (4) different fabric sandwiches following Diagram 15.
- Make sure Fabric A and Fabric B are facing right sides together.



DIAGRAM 15

- Stitch each fabric sandwich by the dotted line.
- Trim at ¼".
- Press open.
- Join them by the 16 1/2" side as shown in Diagram 16. (do this twice)

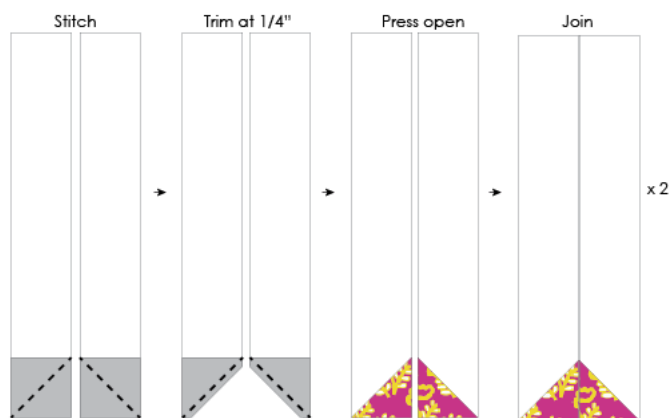


DIAGRAM 16

- Quilt as desired the front and the back pieces of your lunch bag.
- Trim the excess of fabric D

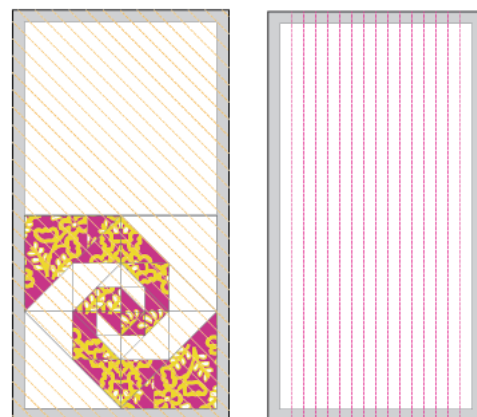


DIAGRAM 17

- Join the side, to the front, to the side, to the front, at ¼" on the 16 ½" sides:

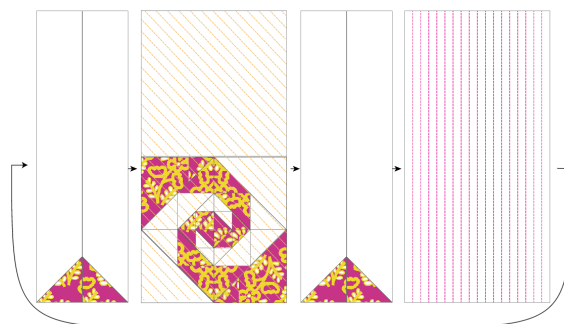


DIAGRAM 18

- Take one (1) 8 ½" x 5 ½" rectangle from Fabric B, backed by one (1) 8 ½" x 5 ½" rectangle from Fabric D.
- Join it to the bottom of the bag
- For the lining use fabric C:
- Join one (1) 5 ½" x 16 ½" rectangle from Fabric C > one (1) 8 ½" x 16 ½" rectangle from Fabric C > one (1) 5 ½" x 16 ½" rectangle from Fabric C > one (1) 8 ½" x 16 ½" rectangle from Fabric C, by the 16 ½" sides.
- Take one (1) 8 ½" x 5 ½" rectangle from Fabric C, and join it to the bottom of the lining.

- Turn the lining inside out and place it inside the padded lunch bag.
- Pin the lunch bag with the lining.
- trim the excess lining and do a zig zag stitch on the top.

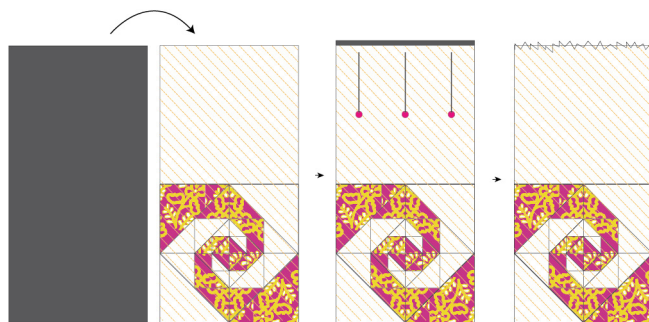


DIAGRAM 19

- Fold the top edge $\frac{1}{2}$ " to the inside and make a stitch at $\frac{1}{4}$ " from the top edge.
- do $\frac{1}{4}$ " stitch on each of the four length sides of the bag to create a piping looking edge.
- Sew two buttons on the top back of the lunch bag.
- Sew two strips on the front 4" down from the top.



DIAGRAM 20



artgalleryfabrics.com

© 2017 Courtesy of Art Gallery Quilts LLC. All Rights Reserved.