

X  
X  
X  
X  
X  
X  
X  
X  
X  
X  
X  
X



XXXXXXXXXXXXXXXXXXXXXXXXXXXX

A DIVISION OF AGF



# MEXICAN GEOMETRICS

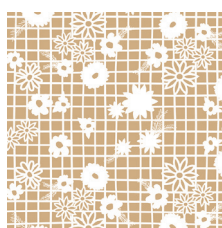


FABRICS DESIGNED BY DANA WILLARD

VIVA



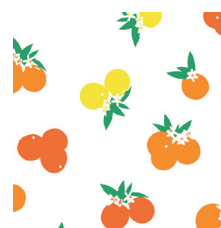
FFN-13840  
MEXICAN DRESS MORNING



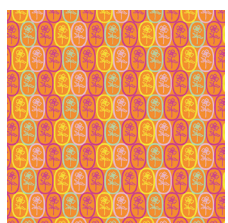
FFN-13841  
PAPEL PICADO MESQUITE



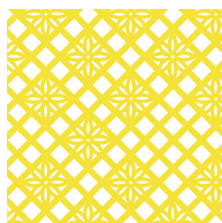
FFN-13842  
DESERT FLOR SUMMER



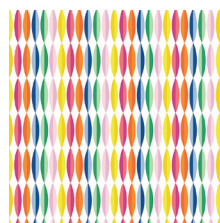
FFN-13843  
CITRUS SUNRISE



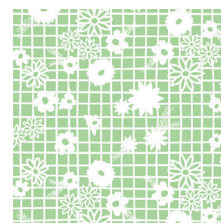
FFN-13844  
FLORITA PARTY



FFN-13845  
ZOCALO LEMON



FFN-13846  
HAPPY STREAMERS

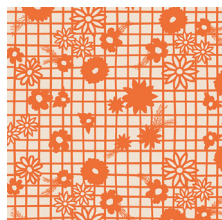


FFN-13848  
PAPEL PICADO MENTA

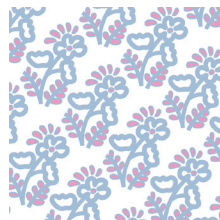
SIESTA



FFN-23840  
MEXICAN DRESS MIDNIGHT



FFN-23841  
PAPEL PICADO NARANJA



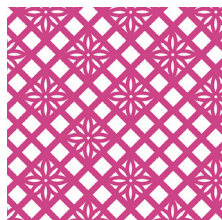
FFN-23842  
DESERT FLOR SPRING



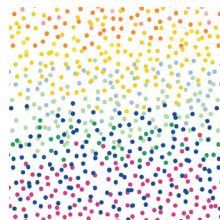
FFN-23843  
CITRUS SUNSET



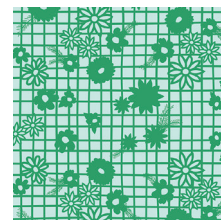
FFN-23844  
FLORITA AZUL



FFN-23845  
ZOCALO RASPBERRY



FFN-23847  
PIÑATA CONFETTI



FFN-23848  
PAPEL PICADO VERDE



FEEL THE DIFFERENCE © 2017 Courtesy of Art Gallery Quilts LLC. All Rights Reserved.



FINISHED SIZE | 18" x 18"

## FABRIC REQUIREMENTS

Fabric <b>A</b>	FFN-23841	¼ yd.
Fabric <b>B</b>	FFN-13841	¼ yd.
Fabric <b>C</b>	PE -433	⅝ yd.
Fabric <b>D</b>	PE- 455	¼ yd.

### BACKING FABRIC

PE-433 included. (Suggested)

## CUTTING DIRECTIONS

*¼" seam allowances are included.  
WOF means width of fabric.*

Two (2) 6 <sup>7</sup>/<sub>8</sub>" x 6 <sup>7</sup>/<sub>8</sub>" squares of Fabric **A**.

One (1) 6 <sup>1</sup>/<sub>2</sub>" x 6 <sup>1</sup>/<sub>2</sub>" squares of Fabric **B**.

Four (4) 6 <sup>1</sup>/<sub>2</sub>" x 3 <sup>1</sup>/<sub>2</sub>" rectangles of Fabric **C**.

Two (2) 6 <sup>7</sup>/<sub>8</sub>" x 6 <sup>7</sup>/<sub>8</sub>" squares of Fabric **C**.

Four (4) 6 <sup>1</sup>/<sub>2</sub>" x 3 <sup>1</sup>/<sub>2</sub>" rectangles of Fabric **D**.

## CONSTRUCTION

*Sew all right sides together with ¼" seam allowance.*

- Place both (2) 6 <sup>7</sup>/<sub>8</sub>" x 6 <sup>7</sup>/<sub>8</sub>" squares from Fabric **A** on top of one another.
- Draw a diagonal line down the middle
- Cut on the diagonal line.

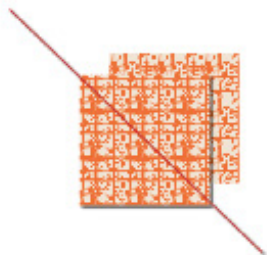


DIAGRAM 1

- Then sub-cut on the diagonal line, you should have 4 Half Square Triangles.
- Now follow the same instructions for the two (2) 6 <sup>7</sup>/<sub>8</sub>" x 6 <sup>7</sup>/<sub>8</sub>" squares of Fabric **C**.



DIAGRAM 2

- Continue by sewing all eight pieces together.



DIAGRAM 3

- Now take your four (4) 6 <sup>1</sup>/<sub>2</sub>" x 3 <sup>1</sup>/<sub>2</sub>" rectangles of Fabric **D** and **C** and sew pieces together.

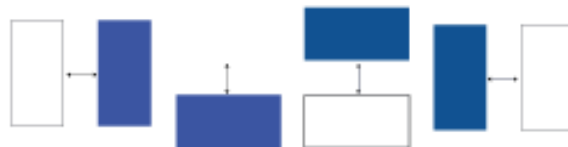


DIAGRAM 4

- You should have a total of nine (9) 6 <sup>1</sup>/<sub>2</sub>" x 6 <sup>1</sup>/<sub>2</sub>" blocks.
- Sew pieces accordingly using cover picture as a reference.

## CREATING THE BACK PILLOW

*Sew all rights sides together with 1/4" seam allowance.  
Press open.*

- To make a envelope back for your pillow take both 18" x 12" rectangles and fold one 12" side on each rectangle in 1/2" and press and then fold another 1/2" and press.
- Top stitch as close to the edge as possible.
- Place rectangles right side together on top of each other to the front of your pillow and stitch all the way around your pillow at 1/4" seam allowance.
- Clip corners at seam allowance and flip piece to the right side of the fabric.
- Fill pillow with a 18" x 18" pillow form and enjoy!



[artgalleryfabrics.com](http://artgalleryfabrics.com)

NOTE: While all possible care has been taken to ensure the accuracy of this pattern, We are not responsible for printing errors or the way in which individual work varies.

Please read instructions carefully before starting the construction of this quilt. If desired, wash and iron your fabrics before starting to cut.

© 2017 Courtesy of Art Gallery Quilts LLC. All Rights Reserved.