

CELEBRATION PILLOW



XXXXXXXXXXXXXXXXXXXXXXXXXXXX

A DIVISION OF AGF

CELEBRATION PILLOW



FABRICS DESIGNED BY DANA WILLARD

VIVA



FFN-13840
MEXICAN DRESS MORNING



FFN-13841
PAPEL PICADO MESQUITE



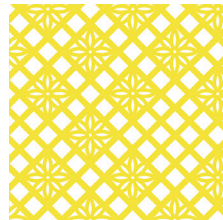
FFN-13842
DESERT FLOR SUMMER



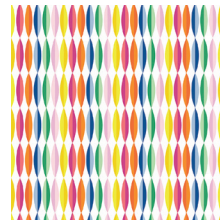
FFN-13843
CITRUS SUNRISE



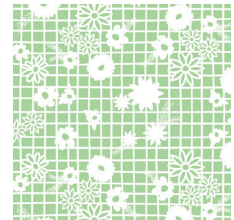
FFN-13844
FLORITA PARTY



FFN-13845
ZOCALO LEMON



FFN-13846
HAPPY STREAMERS

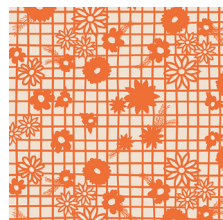


FFN-13848
PAPEL PICADO MENTA

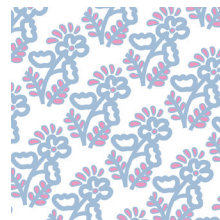
SIESTA



FFN-23840
MEXICAN DRESS MIDNIGHT



FFN-23841
PAPEL PICADO NARANJA



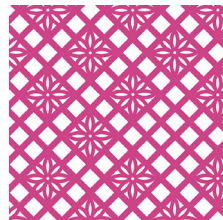
FFN-23842
DESERT FLOR SPRING



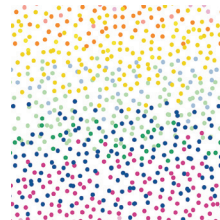
FFN-23843
CITRUS SUNSET



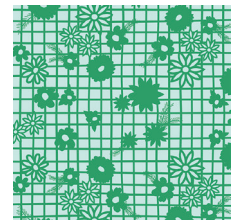
FFN-23844
FLORITA AZUL



FFN-23845
ZOCALO RASPBERRY



FFN-23847
PIÑATA CONFETTI



FFN-23848
PAPEL PICADO VERDE



CELEBRATION PILLOW

FINISHED SIZE | 15" x 15"

FABRIC REQUIREMENTS

Fabric A	FFN-23848	1/8 yd.
Fabric B	FFN- 23842	1/8 yd.
Fabric C	FFN- 23845	1/8 yd.
Fabric D	FFN- 23841	1/8 yd.
Fabric E	FFN- 13846	1/8 yd.
Fabric F	FFN- 23840	1/8 yd.
Fabric G	FFN- 23843	1/8 yd.
Fabric H	FFN- 13841	1/8 yd.
Fabric I	P.E -433	1/2 yd.

BACKING FABRIC

Fabric **I** included. (Suggested)

CUTTING DIRECTIONS

1/4" seam allowances are included.
WOF means width of fabric.

two (2) 3 1/2" x 3 1/2" squares of Fabric **A, B, C, D, E, F, G.**

three (3) 15 1/2" x 1 1/2" strips of Fabric **H.**

twelve (12) 3 1/2" x 1 1/2" strips of Fabric **H.**

two (2) 15 1/2" x 11" squares of Fabric **H.**

CONSTRUCTION

Sew all rights sides together with 1/4" seam allowance.

- Start creating the first row using Fabrics **A, E, C, F,** and **I.**
- Take one 3 1/2" x 1 1/2" strip of Fabric **I** and sew to the side of one 3 1/2" x 3 1/2" of Fabric **A.**
- Continue following this sequence with your Fabric **E, C,** and **F.**



DIAGRAM 1

- Follow the same instructions for the second row, now using 3 1/2" x 3 1/2" squares from Fabrics **B, F, D, G,** and one 3 1/2" x 1 1/2" strips of Fabric **I.**
- Continue with the third row using 3 1/2" x 3 1/2" squares from Fabric **C, H, A, E,** and one 3 1/2" x 1 1/2" strips of Fabric **I.**
- Next with the fourth row using 3 1/2" x 3 1/2" squares of Fabric **D, G, B, H,** and your 3 1/2" x 1 1/2" strips of Fabric **I.**

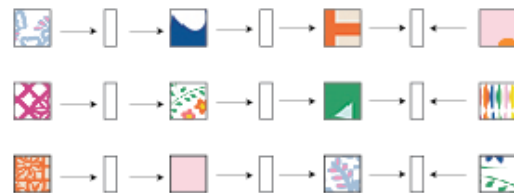


DIAGRAM 2

- Now with your four rows constructed your going to attach all pieces together by using the 15 1/2" x 1 1/2" strips from Fabric **I.**
- Start first by sewing your first row to the 15 1/2" x 1 1/2" strip of Fabric **I.**



DIAGRAM 3

- Follow same instructions for your second and third row

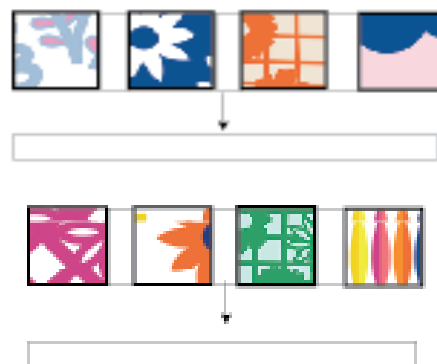
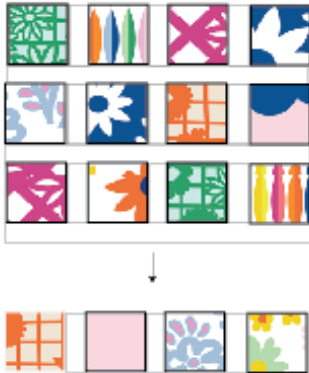


DIAGRAM 4

- Sew those rows together.
- Lastly sew the fourth row completing the front of your Celebration pillow.



- Ultimately it is your choice to add tassels to your pillow for a final touch.



artgalleryfabrics.com

NOTE: While all possible care has been taken to ensure the accuracy of this pattern, We are not responsible for printing errors or the way in which individual work varies. Please read instructions carefully before starting the construction of this quilt. If desired, wash and iron your fabrics before starting to cut.

© 2017 Courtesy of Art Gallery Quilts LLC. All Rights Reserved.

CREATING THE BACK PILLOW

Sew all rights sides together with 1/4" seam allowance. Press open.

- To make a envelope back for your pillow take both 15" x 11" rectangles and fold one 11" side on each rectangle in 1/2" and press and then fold another 1/2" and press.
- Top stitch as close to the edge as possible.
- Place rectangles right side together on top of each other to the front of your pillow and stitch all the way around your pillow at 1/4" seam allowance.
- Clip corners at seam allowance and flip piece to the right side of the fabric.
- Fill pillow with a 15" x 15" pillow form and enjoy!