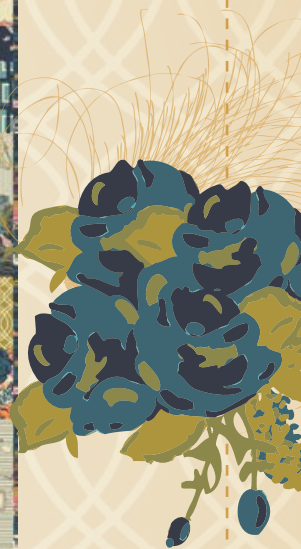




DECO *Dreams*

{ FEATURING **SPLENDOR 1920** COLLECTION }



Art Gallery
FABRICS

FREE PROJECT SHEET

DESIGNED BY Bari J.

DECO *Dreams*

FINISHED SIZE: 60" x 72"

To download the instructions for this pattern visit

artgalleryfabrics.com

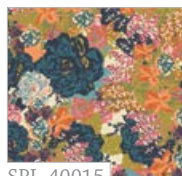


COLOR OPTION

Splendor 1920

by Bari J.

EXUBERANCE



SPL-40015
English Garden Serene



SPL-40010
Adorenament Royal



SPL-40019
Grandeur Mist



SPL-40013
Delicate Sautoir Grey



SPL-40014
Tea Delights Jam



SPL-40017
Flights of Fancy Night



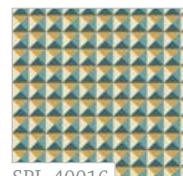
SPL-40018
Decodence Azure



SPL-40012
Abbey Roses Shadow



SPL-40011
Knotted Trellis Olive

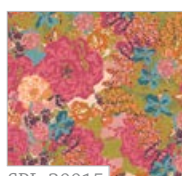


SPL-40016
Nouveau Geo Blue

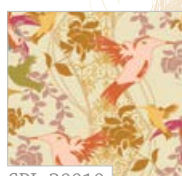
KIT QUANTITY

SPL-40019	1 3/4 yd.	SPL-40017	3/8 yd.
SPL-40013	3/8 yd.	SPL-40014	3/8 yd.
SPL-40015	1 yd.	SPL-40016	1/2 yd.
SPL-40018	3/8 yd.	SPL-40011	1/4 yd.
SPL-40012	1/2 yd.	Backing	4 yd.
SPL-40010	5/8 yd.		

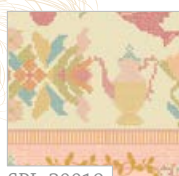
ELEGANCE



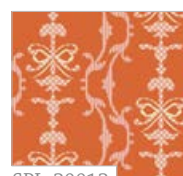
SPL-30015
English Garden Feisty



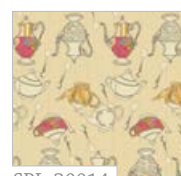
SPL-30010
Adorenament Crown



SPL-30019
Grandeur Bloom



SPL-30013
Delicate Sautoir Rose



SPL-30014
Tea Delights Honey



SPL-30017
Flights of Fancy Day



SPL-30018
Decodence Primrose



SPL-30012
Abbey Roses Blush



SPL-30011
Knotted Trellis Gold



SPL-30016
Nouveau Geo Coral

COLOR OPTION KIT QUANTITY

SPL-30019	1 3/4 yd.	SPL-30017	3/8 yd.
SPL-30013	3/4 yd.	SPL-30018	3/8 yd.
SPL-30015	1 yd.	SPL-30016	1/2 yd.
SPL-30010	1/2 yd.	SPL-30011	1/2 yd.
SPL-30012	3/8 yd.	Backing	4 yd.
SPL-30014	3/8 yd.		

BLUE QUILT

ORANGE QUILT

DECO *Dreams*

Featuring **SPLENDOR 1920** COLLECTION
by Bari J.

FINISHED SIZE: 60" × 72"



FABRIC REQUIREMENTS

Fabric A	SPL-40019	1 ¾ yd.
Fabric B	SPL-40013	¾ yd.
Fabric C	SPL-40015	1 yd.
Fabric D	SPL-40018	¾ yd.
Fabric E	SPL-40012	½ yd.
Fabric F	SPL-40010	⅝ yd.
Fabric G	SPL-40017	¾ yd.
Fabric H	SPL-40014	¾ yd.
Fabric I	SPL-40016	½ yd.
Fabric J	SPL-40011	¼ yd.

Backing Fabric

SPL-40013 4 yd. (suggested)

Binding Fabric

SPL-40015 (Fabric **C**) (included)

FABRIC REQUIREMENTS

Fabric A	SPL-30019	1 ¾ yd.
Fabric B	SPL-30013	¾ yd.
Fabric C	SPL-30015	1 yd.
Fabric D	SPL-30018	¾ yd.
Fabric E	SPL-30012	¾ yd.
Fabric F	SPL-30010	½ yd.
Fabric G	SPL-30017	¾ yd.
Fabric H	SPL-30014	¾ yd.
Fabric I	SPL-30016	½ yd.
Fabric J	SPL-30011	½ yd.

Backing Fabric

SPL-30013 4 yd. (suggested)

Binding Fabric

SPL-30015 (Fabric **C**) (included)

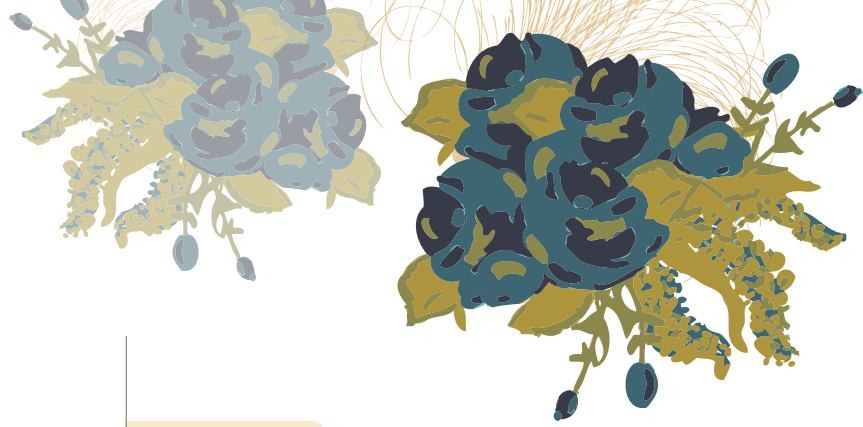


BLUE QUILT



CUTTING DIRECTIONS

1/4" seam allowances are included.



Fabric A

- 2 (two) $60\frac{1}{2}" \times 6\frac{1}{2}"$ rectangles
- 1 (one) $36\frac{1}{2}" \times 6\frac{1}{2}"$ rectangles
- 2 (two) $24\frac{1}{2}" \times 4\frac{1}{2}"$ rectangles
- 2 (two) $4\frac{1}{2}" \times 4\frac{1}{2}"$ squares
- 1 (one) $20\frac{1}{2}" \times 4\frac{1}{2}"$ rectangles

Fabric B

- 1 (one) $2\frac{1}{2}" \times 42\frac{1}{2}"$ rectangle
- 1 (one) $2\frac{1}{2}" \times 18\frac{1}{2}"$ rectangle
- Join the above on short side to make 1 (one) $2\frac{1}{2}" \times 60\frac{1}{2}"$ strips
- 1 (one) $4\frac{1}{2}" \times 4\frac{1}{2}"$ square
- 1 (one) $4\frac{1}{2}" \times 36\frac{1}{2}"$ rectangle
- 1 (one) $4\frac{1}{2}" \times 20\frac{1}{2}"$ rectangle

Fabric C

- 2 (two) $4\frac{1}{2}" \times 22\frac{1}{2}"$ rectangles
- Join on the short side to make 1 (one) $4\frac{1}{2}" \times 44\frac{1}{2}"$ strip
- 2 (two) $2\frac{1}{2}" \times 30\frac{1}{2}"$ rectangles
- Join on the short side to make 1 (one) $2\frac{1}{2}" \times 60\frac{1}{2}"$ strip
- 4 (four) $4\frac{1}{2}" \times 4\frac{1}{2}"$ squares
- 1 (one) $4\frac{1}{2}" \times 12\frac{1}{2}"$ rectangle
- 1 (one) $4\frac{1}{2}" \times 28\frac{1}{2}"$ rectangle
- 2 (two) $4\frac{1}{2}" \times 6\frac{1}{2}"$ rectangles

Fabric D

- 1 (one) $4\frac{1}{2}" \times 32\frac{1}{2}"$ rectangle
- 2 (two) $4\frac{1}{2}" \times 6\frac{1}{2}"$ rectangles
- 1 (one) $4\frac{1}{2}" \times 4\frac{1}{2}"$ square
- 1 (one) $4\frac{1}{2}" \times 8\frac{1}{2}"$ rectangle

Fabric E

- 2 (two) $4\frac{1}{2}" \times 28\frac{1}{2}"$ rectangles
- 1 (one) $4\frac{1}{2}" \times 16\frac{1}{2}"$ rectangle
- 2 (two) $4\frac{1}{2}" \times 4\frac{1}{2}"$ squares
- 1 (one) $4\frac{1}{2}" \times 6\frac{1}{2}"$ rectangle

Fabric F

- 2 (two) $4\frac{1}{2}" \times 28\frac{1}{2}"$ rectangles
- Join on the short side to make 1 (one) $4\frac{1}{2}" \times 56\frac{1}{2}"$ strip
- 3 (three) $4\frac{1}{2}" \times 4\frac{1}{2}"$ squares
- 1 (one) $8\frac{1}{2}" \times 16\frac{1}{2}"$ rectangle

Fabric G

- 1 (one) $4\frac{1}{2}" \times 40\frac{1}{2}"$ rectangle
- 1 (one) $4\frac{1}{2}" \times 24\frac{1}{2}"$ rectangle
- 1 (one) $4\frac{1}{2}" \times 4\frac{1}{2}"$ square
- 1 (one) $4\frac{1}{2}" \times 6\frac{1}{2}"$ rectangle

Fabric H

- 1 (one) $6\frac{1}{2}" \times 36\frac{1}{2}"$ rectangle
- 1 (one) $4\frac{1}{2}" \times 20\frac{1}{2}"$ rectangle
- 1 (one) $4\frac{1}{2}" \times 6\frac{1}{2}"$ rectangle
- 3 (three) $4\frac{1}{2}" \times 4\frac{1}{2}"$ squares

Fabric I

- 2 (two) $4\frac{1}{2}" \times 26\frac{1}{2}"$ rectangle
- Join on the short side to make 1 (one) $4\frac{1}{2}" \times 52\frac{1}{2}"$ strips
- 1 (one) $4\frac{1}{2}" \times 32\frac{1}{2}"$ rectangle
- 2 (two) $4\frac{1}{2}" \times 4\frac{1}{2}"$ squares
- 1 (one) $4\frac{1}{2}" \times 6\frac{1}{2}"$ rectangle

Fabric J

- 1 (one) $4\frac{1}{2}" \times 16\frac{1}{2}"$ rectangle
- 2 (two) $4\frac{1}{2}" \times 6\frac{1}{2}"$ rectangles
- 1 (one) $4\frac{1}{2}" \times 4\frac{1}{2}"$ square





CUTTING DIRECTIONS

1/4" seam allowances are included.

Fabric A

- 2 (two) $60\frac{1}{2}" \times 6\frac{1}{2}"$ rectangles
- 2 (two) $24\frac{1}{2}" \times 4\frac{1}{2}"$ rectangles
- 2 (two) $4\frac{1}{2}" \times 4\frac{1}{2}"$ squares
- 1 (one) $20\frac{1}{2}" \times 4\frac{1}{2}"$ rectangles

Fabric B

- 2 (two) $2\frac{1}{2}" \times 30\frac{1}{2}"$ rectangles
Join on the short side to make 1 (one) $2\frac{1}{2}" \times 60\frac{1}{2}"$ strip
- 2 (two) $4\frac{1}{2}" \times 28\frac{1}{2}"$ rectangles
Join on the short side to make 1 (one) $4\frac{1}{2}" \times 56\frac{1}{2}"$ strip
- 2 (two) $4\frac{1}{2}" \times 4\frac{1}{2}"$ squares
- 1 (one) $4\frac{1}{2}" \times 36\frac{1}{2}"$ rectangle
- 1 (one) $4\frac{1}{2}" \times 20\frac{1}{2}"$ rectangle

Fabric C

- 2 (two) $4\frac{1}{2}" \times 22\frac{1}{2}"$ rectangles
Join on the short side to make 1 (one) $4\frac{1}{2}" \times 44\frac{1}{2}"$ strip
- 2 (two) $2\frac{1}{2}" \times 30\frac{1}{2}"$ rectangles
Join on the short side to make 1 (one) $2\frac{1}{2}" \times 60\frac{1}{2}"$ strip
- 3 (three) $4\frac{1}{2}" \times 4\frac{1}{2}"$ squares
- 1 (one) $4\frac{1}{2}" \times 12\frac{1}{2}"$ rectangle
- 1 (one) $4\frac{1}{2}" \times 28\frac{1}{2}"$ rectangle
- 2 (two) $4\frac{1}{2}" \times 6\frac{1}{2}"$ rectangles

Fabric D

- 1 (one) $4\frac{1}{2}" \times 32\frac{1}{2}"$ rectangle
- 2 (two) $4\frac{1}{2}" \times 6\frac{1}{2}"$ rectangles
- 1 (one) $4\frac{1}{2}" \times 4\frac{1}{2}"$ square
- 1 (one) $4\frac{1}{2}" \times 8\frac{1}{2}"$ rectangle

Fabric E

- 1 (one) $4\frac{1}{2}" \times 28\frac{1}{2}"$ rectangle
- 1 (one) $4\frac{1}{2}" \times 16\frac{1}{2}"$ rectangle
- 2 (two) $4\frac{1}{2}" \times 4\frac{1}{2}"$ squares
- 1 (one) $4\frac{1}{2}" \times 6\frac{1}{2}"$ rectangle

Fabric F

- 1 (one) $4\frac{1}{2}" \times 4\frac{1}{2}"$ square
- 1 (one) $8\frac{1}{2}" \times 16\frac{1}{2}"$ rectangle
- 1 (one) $4\frac{1}{2}" \times 28\frac{1}{2}"$ rectangle
- 1 (one) $4\frac{1}{2}" \times 6\frac{1}{2}"$ rectangle

Fabric G

- 1 (one) $6\frac{1}{2}" \times 36\frac{1}{2}"$ rectangle
- 1 (one) $4\frac{1}{2}" \times 16\frac{1}{2}"$ rectangle
- 1 (one) $4\frac{1}{2}" \times 4\frac{1}{2}"$ square
- 1 (one) $4\frac{1}{2}" \times 6\frac{1}{2}"$ rectangle

Fabric H

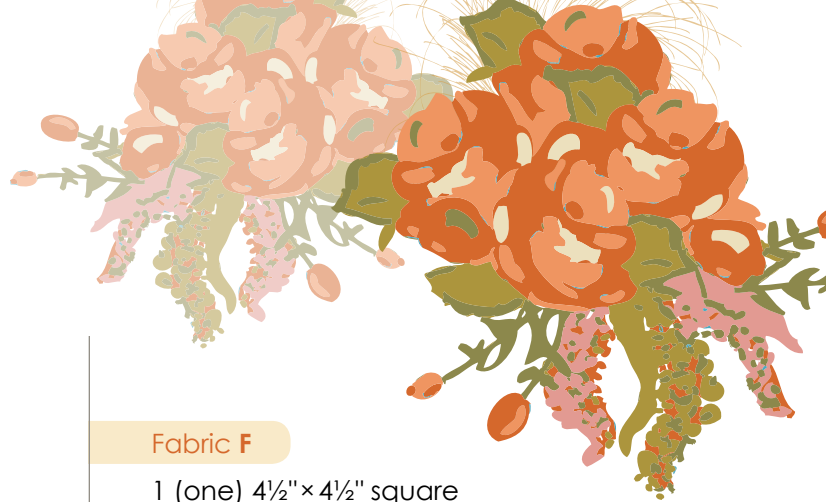
- 1 (one) $6\frac{1}{2}" \times 36\frac{1}{2}"$ rectangle
- 1 (one) $4\frac{1}{2}" \times 20\frac{1}{2}"$ rectangle
- 1 (one) $4\frac{1}{2}" \times 6\frac{1}{2}"$ rectangle
- 2 (two) $4\frac{1}{2}" \times 4\frac{1}{2}"$ squares

Fabric I

- 2 (two) $4\frac{1}{2}" \times 26\frac{1}{2}"$ rectangle
Join on the short side to make 1 (one) $4\frac{1}{2}" \times 52\frac{1}{2}"$ strips
- 1 (one) $4\frac{1}{2}" \times 32\frac{1}{2}"$ rectangle
- 2 (two) $4\frac{1}{2}" \times 4\frac{1}{2}"$ squares
- 1 (one) $4\frac{1}{2}" \times 6\frac{1}{2}"$ rectangle

Fabric J

- 1 (one) $4\frac{1}{2}" \times 6\frac{1}{2}"$ rectangle
- 1 (one) $4\frac{1}{2}" \times 40\frac{1}{2}"$ rectangle
- 1 (one) $4\frac{1}{2}" \times 24\frac{1}{2}"$ rectangle
- 4 (four) $4\frac{1}{2}" \times 4\frac{1}{2}"$ squares



CONSTRUCTION

Sew all rights sides together with $\frac{1}{4}$ " seam allowance.
Press open.

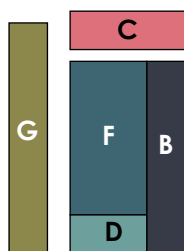
Note **DECO DREAMS** is a concentric quilt, which doesn't consist in blocks. You will start sewing from the center out, following the diagrams and/or cover picture.

Both the **BLUE** & **ORANGE** versions are constructed in the same way, but there are some variations in the fabric placements. If you are making the **ORANGE** version please refer to the diagram on page 8 for the correct fabric placement.

- Start by joining a fabric **F** ($8\frac{1}{2}" \times 16\frac{1}{2}"$) rectangle with a fabric **D** ($4\frac{1}{2}" \times 8\frac{1}{2}"$) rectangle.



- Add a fabric **B** ($4\frac{1}{2}" \times 20\frac{1}{2}"$) rectangle on the right side.
- Then a fabric **C** ($4\frac{1}{2}" \times 12\frac{1}{2}"$) rectangle on top.
- Next, a fabric **G** ($4\frac{1}{2}" \times 24\frac{1}{2}"$) rectangle on the left side.



- Make the following units and join them to the central unit, starting on the sides and leaving the bottom one for last.

LEFT

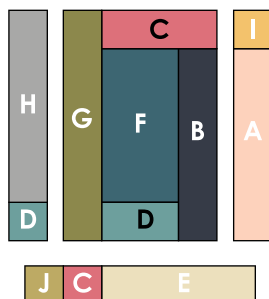
Fabric **H** ($4\frac{1}{2}" \times 20\frac{1}{2}"$)
Fabric **D** ($4\frac{1}{2}" \times 4\frac{1}{2}"$)

RIGHT

Fabric **I** ($4\frac{1}{2}" \times 4\frac{1}{2}"$)
Fabric **A** ($4\frac{1}{2}" \times 20\frac{1}{2}"$)

BOTTOM

Fabric **J** ($4\frac{1}{2}" \times 4\frac{1}{2}"$)
Fabric **C** ($4\frac{1}{2}" \times 4\frac{1}{2}"$)
Fabric **E** ($4\frac{1}{2}" \times 16\frac{1}{2}"$)



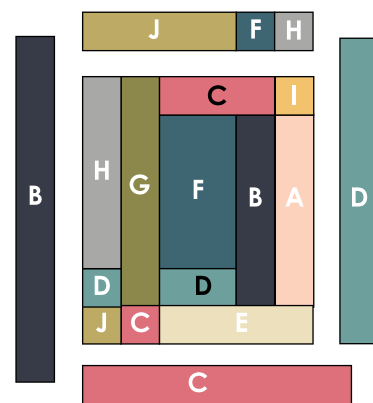
- Start by joining the following, and then attach it to the top of the central unit.

TOP

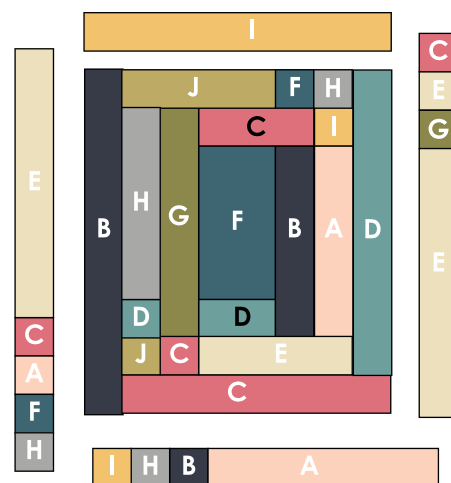
Fabric **J** ($4\frac{1}{2}" \times 16\frac{1}{2}"$)
Fabric **F** ($4\frac{1}{2}" \times 4\frac{1}{2}"$)
Fabric **H** ($4\frac{1}{2}" \times 4\frac{1}{2}"$)

- Attach the following in a clockwise manner:

Fabric **D** ($4\frac{1}{2}" \times 32\frac{1}{2}"$)
Fabric **C** ($4\frac{1}{2}" \times 28\frac{1}{2}"$)
Fabric **B** ($4\frac{1}{2}" \times 36\frac{1}{2}"$)



- Join a fabric **I** ($4\frac{1}{2}" \times 32\frac{1}{2}"$) rectangle on top.



- Make the following units and join them to the central unit, starting on the right and continuing in a clockwise manner.

RIGHT

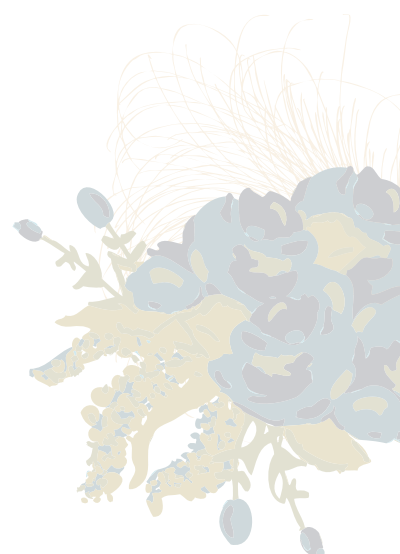
Fabric **C** ($4\frac{1}{2}" \times 4\frac{1}{2}"$)
Fabric **E** ($4\frac{1}{2}" \times 4\frac{1}{2}"$)
Fabric **G** ($4\frac{1}{2}" \times 4\frac{1}{2}"$)
Fabric **E** ($4\frac{1}{2}" \times 28\frac{1}{2}"$)

BOTTOM

Fabric **I** ($4\frac{1}{2}" \times 4\frac{1}{2}"$)
Fabric **H** ($4\frac{1}{2}" \times 4\frac{1}{2}"$)
Fabric **B** ($4\frac{1}{2}" \times 4\frac{1}{2}"$)
Fabric **A** ($4\frac{1}{2}" \times 24\frac{1}{2}"$)

LEFT

Fabric **E** ($4\frac{1}{2}" \times 28\frac{1}{2}"$)
Fabric **C** ($4\frac{1}{2}" \times 4\frac{1}{2}"$)
Fabric **A** ($4\frac{1}{2}" \times 4\frac{1}{2}"$)
Fabric **F** ($4\frac{1}{2}" \times 4\frac{1}{2}"$)
Fabric **H** ($4\frac{1}{2}" \times 4\frac{1}{2}"$)

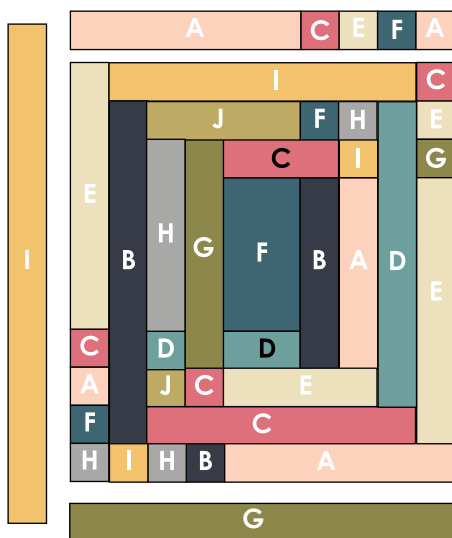


- Start by joining the following, and then attach the unit to the top of the central unit.

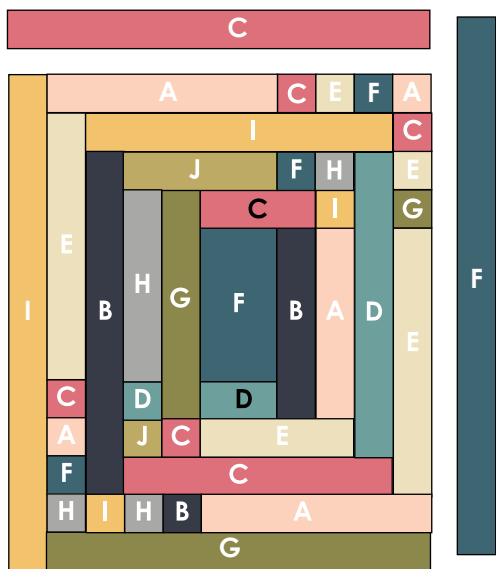
TOP

Fabric **A** ($4\frac{1}{2}" \times 24\frac{1}{2}"$)
 Fabric **C** ($4\frac{1}{2}" \times 4\frac{1}{2}"$)
 Fabric **E** ($4\frac{1}{2}" \times 4\frac{1}{2}"$)
 Fabric **F** ($4\frac{1}{2}" \times 4\frac{1}{2}"$)
 Fabric **A** ($4\frac{1}{2}" \times 4\frac{1}{2}"$)

- Join a fabric **G** ($4\frac{1}{2}" \times 40\frac{1}{2}"$) rectangle on the bottom and a fabric **I** ($4\frac{1}{2}" \times 52\frac{1}{2}"$) rectangle on the left.



- Join a fabric **C** ($4\frac{1}{2}" \times 44\frac{1}{2}"$) rectangle on top and a fabric **F** ($4\frac{1}{2}" \times 56\frac{1}{2}"$) rectangle on the right.



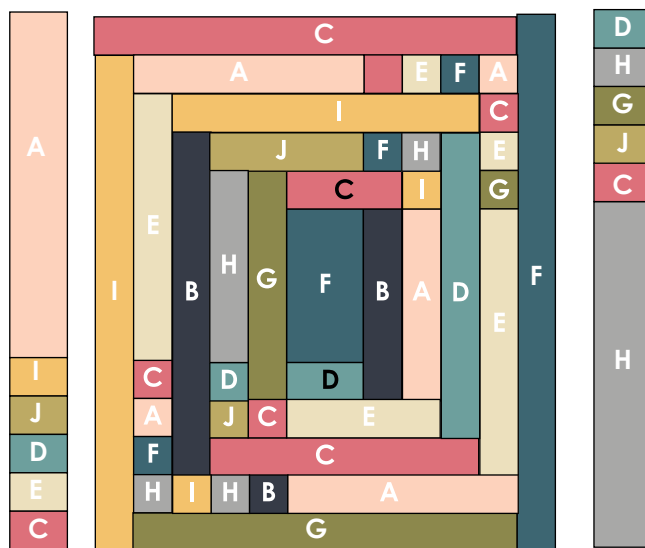
- Make the following units and join them on the left and right sides.

LEFT

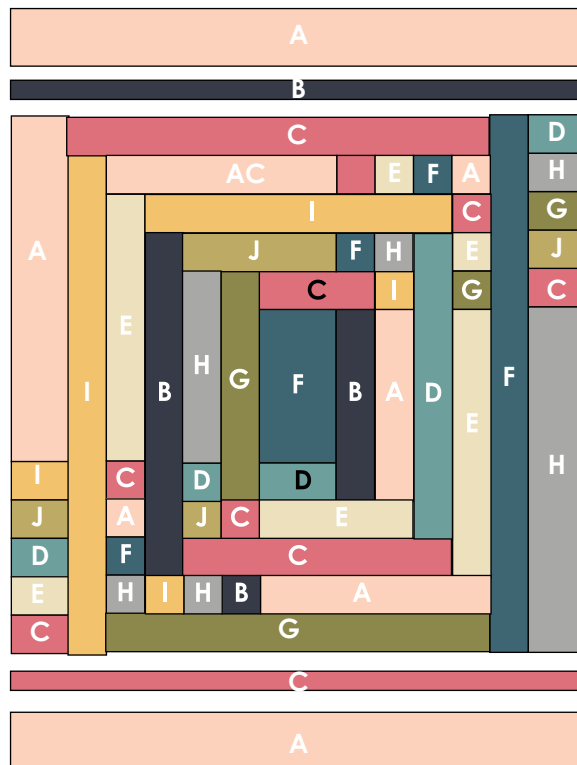
Fabric **A** ($6\frac{1}{2}" \times 36\frac{1}{2}"$)
 Fabric **I** ($6\frac{1}{2}" \times 4\frac{1}{2}"$)
 Fabric **J** ($6\frac{1}{2}" \times 4\frac{1}{2}"$)
 Fabric **D** ($6\frac{1}{2}" \times 4\frac{1}{2}"$)
 Fabric **E** ($6\frac{1}{2}" \times 4\frac{1}{2}"$)
 Fabric **C** ($6\frac{1}{2}" \times 4\frac{1}{2}"$)

RIGHT

Fabric **D** ($6\frac{1}{2}" \times 4\frac{1}{2}"$)
 Fabric **H** ($6\frac{1}{2}" \times 4\frac{1}{2}"$)
 Fabric **G** ($6\frac{1}{2}" \times 4\frac{1}{2}"$)
 Fabric **J** ($6\frac{1}{2}" \times 4\frac{1}{2}"$)
 Fabric **C** ($6\frac{1}{2}" \times 4\frac{1}{2}"$)
 Fabric **H** ($6\frac{1}{2}" \times 36\frac{1}{2}"$)

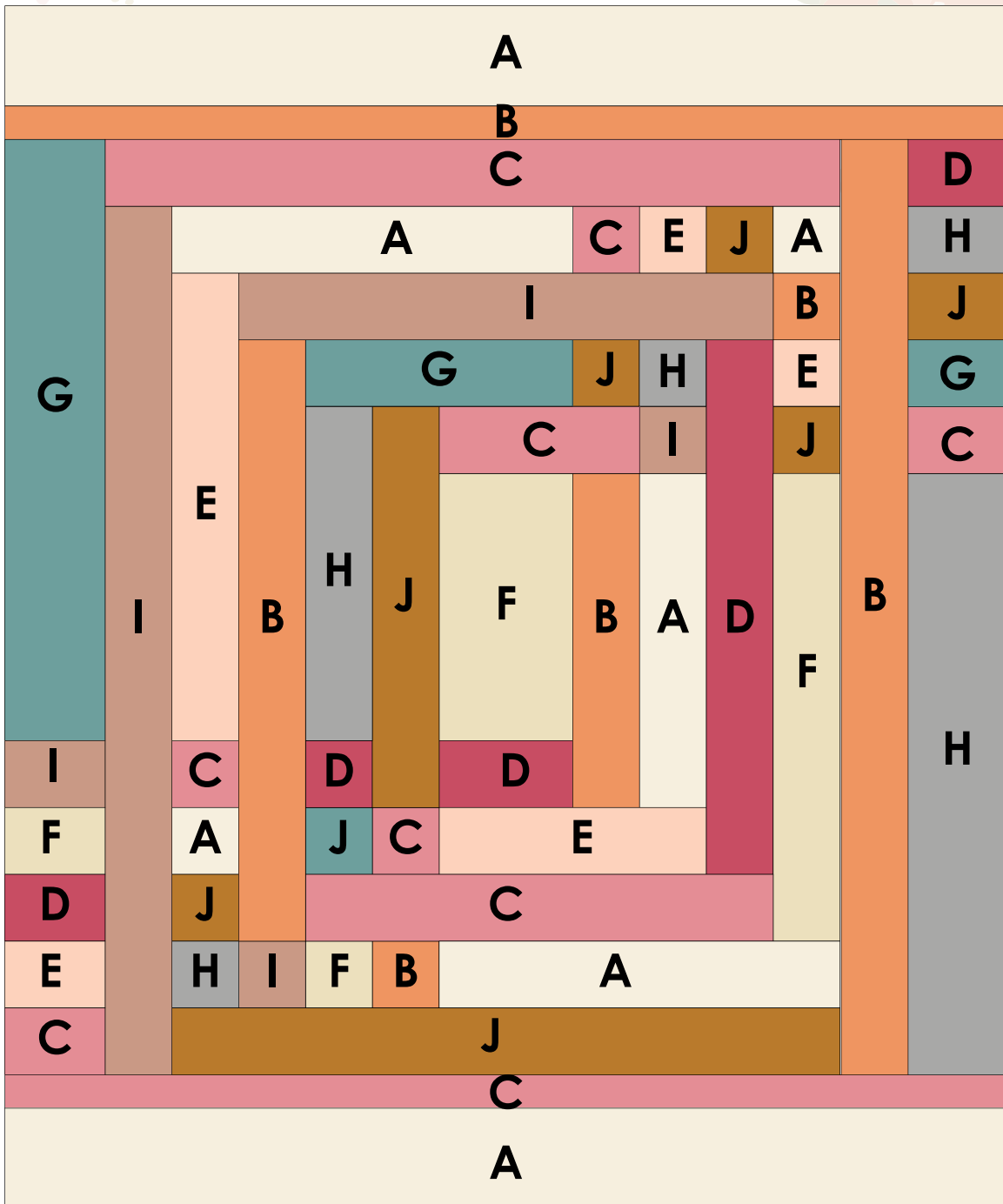


- Join a fabric **B** ($2\frac{1}{2}" \times 60\frac{1}{2}"$) strip on top of the unit and then a fabric **A** ($6\frac{1}{2}" \times 60\frac{1}{2}"$) rectangle on top.
- Join a fabric **C** ($2\frac{1}{2}" \times 60\frac{1}{2}"$) strip on the bottom of the unit and then a fabric **A** ($6\frac{1}{2}" \times 60\frac{1}{2}"$) rectangle below.



ORANGE QUILT

FABRIC PLACEMENT



QUILT ASSEMBLY

Sew right sides together.

- Place BACKING FABRIC on a large surface wrong side up. Stretch it with masking tape against that surface.
- Place BATTING on top of backing fabric.
- Place TOP on top of the batting with right side facing up. Smooth away wrinkles using your hands.
- Pin all layers together and baste with basting thread, using long stitches. You can also use safety pins to join the layers.
- Machine or hand quilt starting at the center and working towards the corners. Remember that quilting motives are a matter of personal preference. Have fun choosing yours!
- After you finished, trim excess of any fabric or batting, squaring the quilt to proceed to bind it.

BINDING

Sew right sides together.

- Cut enough strips 1½" wide by the width of the fabric C to make a final strip 274" long. Start sewing the binding strip in the middle of one of the sides of the quilt, placing the strip right side down and leaving an approximated 5" tail. Sew with ¼" seam allowance (using straight stitch), aligning the strip's raw edge with the quilt top's raw edge.
- Stop stitching ¼" before the edge of the quilt (DIAGRAM B 1). Clip the threads. Remove the quilt from under the machine presser foot. Fold the strip in a motion of 45° and upward, pressing with your fingers (DIAGRAM B2). Hold this fold with your finger, bring the strip down in line with the next edge, making a horizontal fold that aligns with the top edge of the quilt (DIAGRAM B3). Start sewing at ¼" of the border, stitching all the layers. Do the same in the four corners of the quilt.
- Stop stitching before you reach the last 5 or 6 inches. Cut the threads and remove the quilt from under the machine presser foot. Lay the loose ends of the binding flat along the quilt edge, folding the ends back on themselves where they meet. Press them together to form a crease. Using this crease as the stitching line, sew the two open ends of the binding with right sides together (you can help yourself marking with a pencil if the crease is difficult to see).
- Trim seam to ¼" and press open. Complete the sewing. Turn binding to back of the quilt, turn raw edge inside and stitch by hand using blind stitch.

DIAGRAM B1

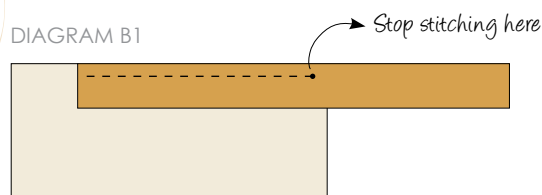


DIAGRAM B2

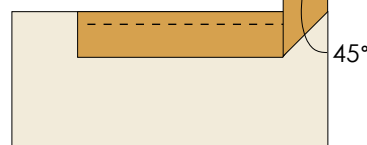
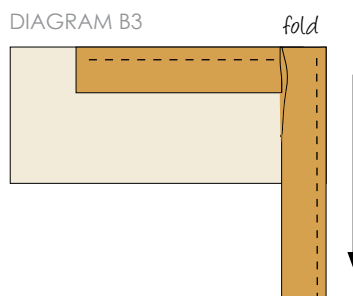


DIAGRAM B3



CONGRATULATIONS!