

FABRICS DESIGNED BY BONNIE CHRISTINE

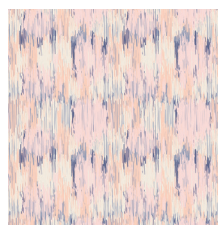
HONEST WHISPER



WOT-21400
AQUARELLE STUDY WASH



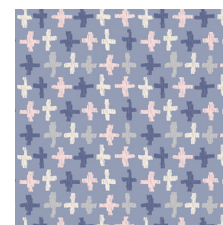
WOT-21401
SPLENDID OATH RAIN



WOT-21402
DAYDREAM SIGH



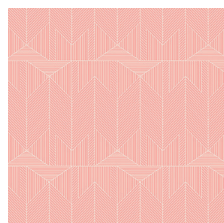
WOT-21403
FLOWER GLORY MORNING



WOT-21404
JOY CROSSROADS AZURE



WOT-21405
SWEET BUBBLES MINT



WOT-21406
SUBTLE JOURNEY EAST



WOT-21407
BLOOMING BROOK MOON



WOT-21408
WORDS TO LIVE BY BOUNTY



WOT-21409
GARDEN WALK THISTLE

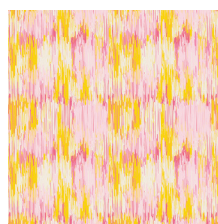
HONEYED WONDERS



WOT-31400
AQUARELLE STUDY TINT



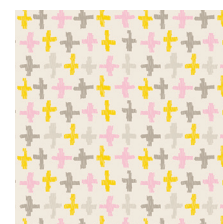
WOT-31401
SPLENDID OATH INK



WOT-31402
DAYDREAM HUM



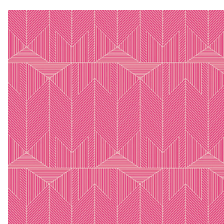
WOT-31403
FLOWER GLORY EVENING



WOT-31404
JOY CROSSROADS PASTEL



WOT-31405
SWEET BUBBLES SUGAR



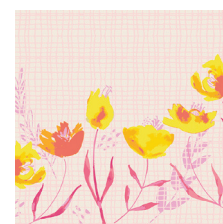
WOT-31406
SUBTLE JOURNEY WEST



WOT-31407
BLOOMING BROOK SOL



WOT-31408
WORDS TO LIVE BY WHISPER



WOT-31409
GARDEN WALK SHINE





FABRIC REQUIREMENTS

Fabric A	WOT-31407	2¼ yd.
Fabric B	WOT-31408	¾ yd.
Fabric C	DEN-S-2004	1½ yd.
Fabric D	DEN-S-2001	⅓ yd.

BACKING FABRIC

WOT-31407 included (*suggested*)

BINDING FABRIC

DEN-S-2004 included (*suggested*)

CUTTING DIRECTIONS

*¼" seam allowances are included.
WOF means width of fabric.*

One (1) 38½" x 6½" strip from Fabrics **A, B**

Five (5) 38½" x 3" from Fabric **A, B**

Eleven (11) 38½" x 1½" strips from Fabric **C**

Four (4) 38½" x 2¾" strips from Fabric **C**

Two (2) 51" x 1½" from Fabric **C**

One (2) butterflies from Fabric **D** (*you can find the template in the last page*)

CONSTRUCTION

- Join all wrong sides together with ¼" seam allowance.
- Intercalate the strips starting with the 38½" x 6½" from fabric A and ending with the 38½" x 6½" from fabric B.
- **A>C>B>C>A>C>B>C>A>C>B>C>A>C>B>C>A>C>B>C>A>C>B**
- Follow Diagram 1. for fabric placement and attachment.

XX



DIAGRAM 1

- Fold fabric D as shown in Diagram 2.
- Use the template in the last page to cut two butterflies on the folds of the fabric as shown in Diagram 2.

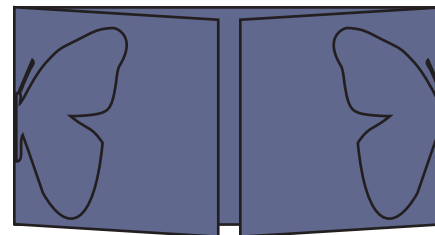


DIAGRAM 2

- Pin the butterflies to two corners as shown in Diagram 3.
- Stitch inside the butterfly to attach it.

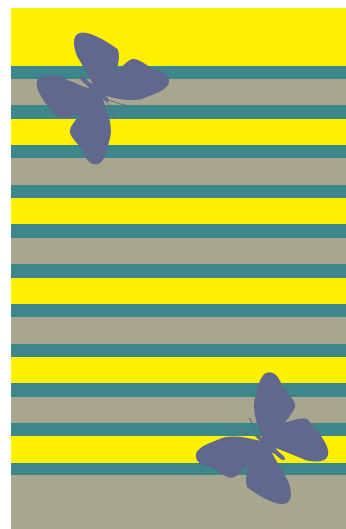


DIAGRAM 3

QUILT ASSEMBLY

Sew rights sides together.

- Place BACKING FABRIC on a large surface wrong side up. Stretch it with masking tape against that surface.
- Place BATTING on top of backing fabric.
- Place TOP on top of the batting with right side facing up. Smooth away wrinkles using your hands.
- Pin all layers together and baste with basting thread, using long stitches. You can also use safety pins to join the layers.
- Machine or hand quilt starting at the center and working towards the corners. Remember that quilting motifs are a matter of personal preference. Have fun choosing yours!
- After you finished, trim excess of any fabric or batting, squaring the quilt to proceed to bind it.

BINDING

Sew rights sides together.

- The two (2) 50" sides are bound and the two (2) 38" sides are finished with fringe.
- Use the two (2) 51" x 1½" strips to bind the long sides of the quilt.
- Take the four (4) 38" x 2¾" strips of fabric C and cut them every ⅛" from the bottom up to 2" as shown in Diagram 4.

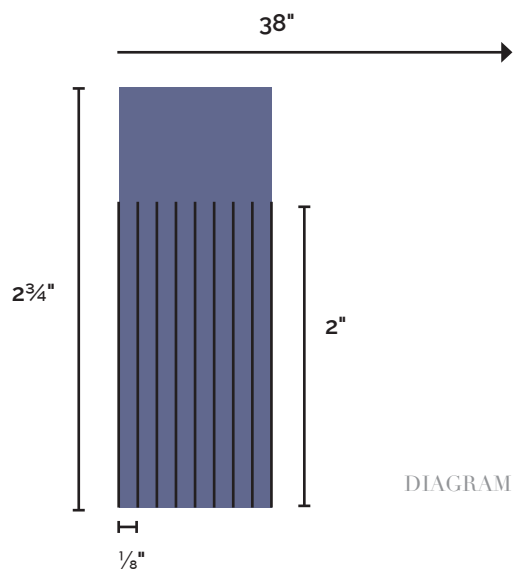


DIAGRAM 4

XXXXXXXXXXXXXXXXXXXXXXXXXXXXXXXXXXXX

- Place the quilt between the fringed strips, making sure the right sides of the strips are facing the quilt, and stitch at ¼". Diagram 5.
- Turn the fringe away from the quilt and do a top stitch to keep the fringe in place. Diagram 6.

Profile View

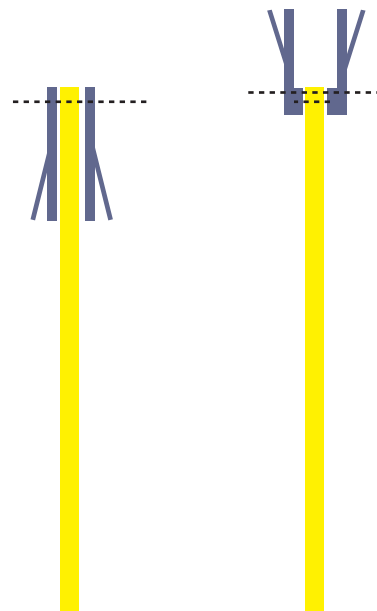


DIAGRAM 5

DIAGRAM 6



artgalleryfabrics.com

NOTE: While all possible care has been taken to ensure the accuracy of this pattern, We are not responsible for printing errors or the way in which individual work varies. Please read instructions carefully before starting the construction of this quilt. If desired, wash and iron your fabrics before starting to cut.

Cut on Fold

