

X
X
X
X
X
X
X
X
X
X
X
X
X



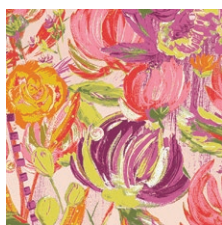
Efflorescent

QUILT DESIGNED BY AGF studio

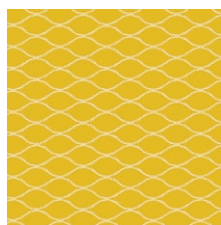


FABRICS DESIGNED BY  bari j.

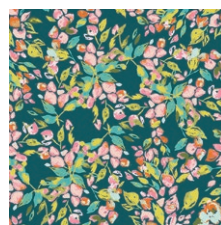
EARLY DESERT



SGE-14450
PAINTED DESERT MORNING



SGE-14451
SAGUARO CREST SUN



SGE-14452
BOUGAINVILLEA EVERGREEN



SGE-14453
YUMA LEMONS MIST



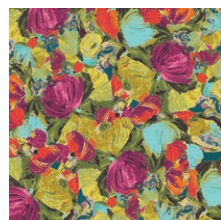
SGE-14454
PRIMROSE FIELD DARK



SGE-14455
COYOTE & QUAIL JOJOBA



SGE-14456
SUNSWEPT CANYON ROSE



SGE-14457
CACTUS FLORA BERRY



SGE-14458
BAJA WEAVE CURRANT

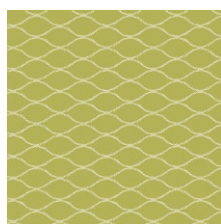


SGE-14459
PRICKLY PEAR RUBY

LATE DESERT



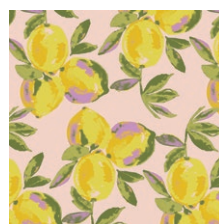
SGE-24450
PAINTED DESERT NIGHT



SGE-24451
SAGUARO CREST OLIVE



SGE-24452
BOUGAINVILLEA LILAC



SGE-24453
YUMA LEMONS GLARE



SGE-24454
PRIMROSE FIELD LIGHT



SGE-24455
COYOTE & QUAIL LAVENDER



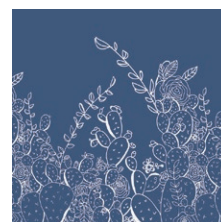
SGE-24456
SUNSWEPT CANYON SAGE



SGE-24457
CACTUS FLORA LILY



SGE-24458
BAJA WEAVE MAUVE



SGE-24459
PRICKLY PEAR INDIGO



FINISHED SIZE | 64" x 64"

FABRIC REQUIREMENTS

Fabric A	SGE-14453	1/3 yd.
Fabric B	SGE-14451	1/3 yd.
Fabric C	SGE-14454	1/3 yd.
Fabric D	SGE-24451	1/3 yd.
Fabric E	SGE-14457	1/3 yd.
Fabric F	SGE-24454	1/3 yd.
Fabric G	SGE-14459	1 1/8 yd.
Fabric H	SGE-24458	1/3 yd.
Fabric I	FE-533	1 1/3 yd.
Fabric J	FE-530	3/8 yd.
Fabric K	PE-446	1/6 yd.
Fabric L	PE-423	1/6 yd.
Fabric M	PE-464	1/6 yd.
Fabric N	PE-400	1/6 yd.

BACKING FABRIC

SGE-14455 - 4 yds. (*Suggested*)

BINDING FABRIC

SGE-24450 - 3/8 yd.

CUTTING DIRECTIONS

*1/4" seam allowances are included.
WOF means width of fabric.*

Note: Fabric G has a larger fabric requirement due to fussy cutting!

Sixteen (16) 4 1/2" squares from Fabric **A-H**

Sixty Four (64) 2 1/2" x 4 1/2" rectangle from Fabric **I**

Forty Eight (48) 2 7/8" x 4 7/8" rectangles from Fabric **I**

Thirty Two (32) 2 7/8" x 4 7/8" rectangles from Fabric **J**

Eight (8) 2 7/8" x 4 7/8" rectangles from Fabric **K, L, M** and **N**

CONSTRUCTION

Sew all rights sides together with 1/4" seam allowance.

- Make two stacks of sixteen 2 7/8" x 4 7/8" rectangles from Fabric **I** and **J**.
- Cut stacks at both diagonals. (Diagram 1)

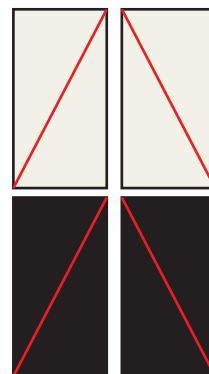
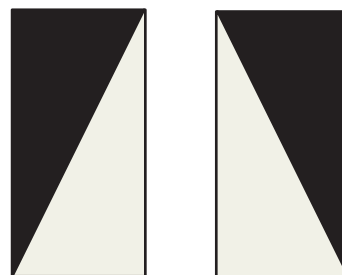
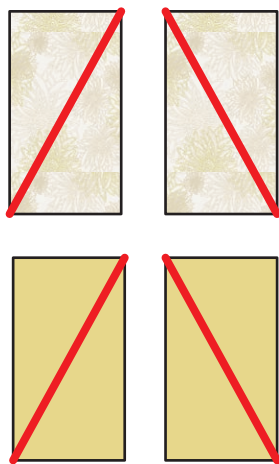


DIAGRAM 1

- Arrange your triangles and sew to get 128 **I/J** half rectangle triangles, 64 with the diagonal going to the right and 64 with the diagonal going to the left. (Diagram 2)



- Repeat this same process to get your other half triangle rectangles in your quilt.
- Take two 2 7/8" x 4 7/8" rectangles from Fabric **K** and **L**.
- Cut each rectangle on different diagonals to create the following half triangle rectangles. (Diagram 3)



Eight

Eight

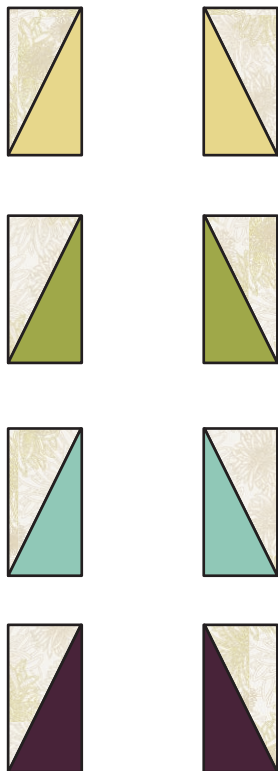


DIAGRAM 3

XXXXXXXXXXXXXXXXXXXXXXXXXXXXXXXXXXXX

- Repeat this process with the rest of your $2\frac{7}{8}$ " x $4\frac{7}{8}$ " rectangles. Sew them together following Diagram 4.

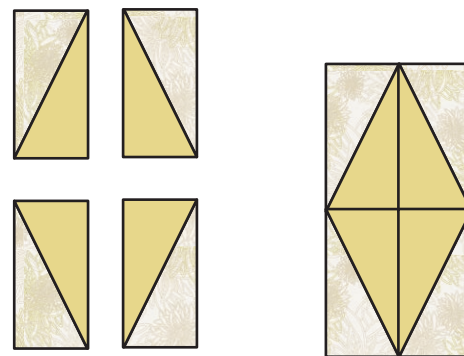


DIAGRAM 4

- To create your block follow Diagram 5. Place 2 $1\frac{1}{2}$ " x $4\frac{1}{2}$ " rectangles, 4 $1\frac{1}{2}$ " squares and your half triangle rectangles into four rows. Sew rows together to create your block.

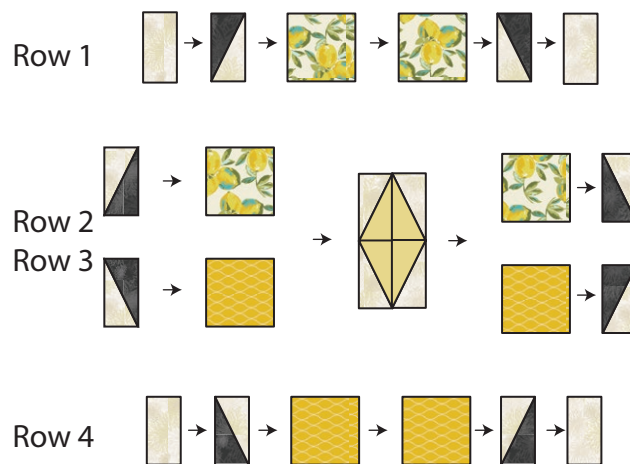


DIAGRAM 5

- You will need three A and C blocks!
- Make another A and C block but make two halves.
- Make four Block A and Block D.
- Arrange and sew your blocks following the quilt illustration on the cover page!

QUILT ASSEMBLY

Sew rights sides together.

- Place BACKING FABRIC on a large surface wrong side up. Stretch it with masking tape against that surface.
- Place BATTING on top of backing fabric.
- Place TOP on top of the batting with right side facing up. Smooth away wrinkles using your hands..
- Pin all layers together and baste with basting thread, using long stitches. You can also use safety pins to join the layers.
- Machine or hand quilt starting at the center and working towards the corners. Remember that quilting motifs are a matter of personal preference. Have fun choosing yours!
- After you finished, trim excess of any fabric or batting, squaring the quilt to proceed to bind it..

BINDING

Sew rights sides together.

- Cut enough strips $1\frac{1}{2}$ ' wide by the width of the **SGE-24450** to make a final strip 266" long. Start sewing the binding strip in the middle of one of the sides of the quilt, placing the strip right side down and leaving an approximated 5' tail. Sew with $\frac{1}{4}$ " seam allowance (using straight stitch), aligning the strip's raw edge with the quilt top's raw edge.
- Stop stitching $\frac{1}{4}$ ' before the edge of the quilt (**DIAGRAM B 1**). Clip the threads. Remove the quilt from under the machine presser foot. Fold the strip in a motion of 45° and upward, pressing with your fingers (**DIAGRAM B2**). Hold this fold with your finger, bring the strip down in line with the next edge, making a horizontal fold that aligns with the top edge of the quilt (**DIAGRAM B3**). Start sewing at $\frac{1}{4}$ ' of the border, stitching all the layers. Do the same in the four corners of the quilt..

Block A



Block B



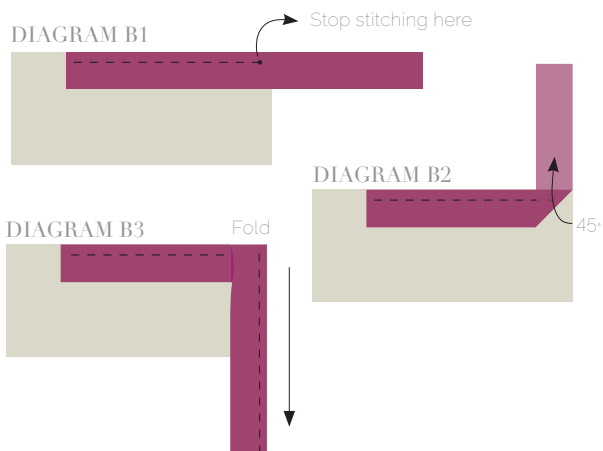
Block C



Block D



- Stop stitching before you reach the last 5 or 6 inches. Cut the threads and remove the quilt from under the machine presser foot. Lay the loose ends of the binding flat along the quilt edge, folding the ends back on themselves where they meet. Press them together to form a crease. Using this crease as the stitching line, sew the two open ends of the binding with right sides together (you can help yourself marking with a pencil if the crease is difficult to see).
- Trim seam to $\frac{1}{4}$ " and press open. Complete the sewing. Turn binding to back of the quilt, turn raw edge inside and stitch by hand using blind stitch.



XXXXXXXXXXXXXXXXXXXXXXXXXXXXXXXXXXXX

Congratulations & enjoy

XXXXXXXXXXXXXXXXXXXXXXXXXXXXXXXXXXXX



artgalleryfabrics.com

NOTE: While all possible care has been taken to ensure the accuracy of this pattern, We are not responsible for printing errors or the way in which individual work varies. Please read instructions carefully before starting the construction of this quilt. If desired, wash and iron your fabrics before starting to cut.