



# Egress





# Egress

PILLOW DESIGNED BY PAT BRAVO



Pat Bravo

# heartland

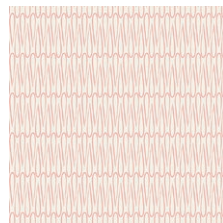


FABRICS DESIGNED BY PAT BRAVO

WARM FIELD



HRT-85300  
BLOMMA GARDEN PASTICHE



HRT-85301  
REGN DROPS SUN



HRT-85303  
PINETRE DAYBREAK



HRT-85304  
UNN CROSS PINE



HRT-85305  
LITEN DITSY FIELD



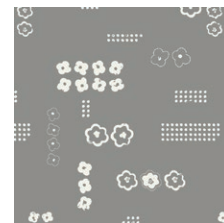
HRT-85306  
HUS HOOT GUL



HRT-85307  
DROPPAR MOONDUST



HRT-85308  
TREKANT ROWS CANDID



HRT-85309  
SCANDI PLANE GREY



HRT-85310  
DULCET PATHS PASTELL

LUCNA MEADOW



HRT-95300  
BLOMMA GARDEN GOLDEN



HRT-95302  
UNN CROSS SILVER



HRT-95303  
PINETRE FOG



HRT-95304  
UNN CROSS OCHRE



HRT-95305  
LITEN DITSY WHISPER



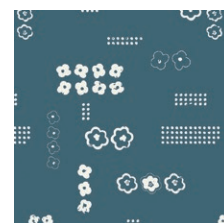
HRT-95306  
HUS HOOT GRA



HRT-95307  
DROPPAR BURST



HRT-95308  
TREKANT ROWS BREEZE



HRT-95309  
SCANDI PLANE BALTIC



HRT-95310  
DULCET PATHS MIST



FEEL THE DIFFERENCE © 2016 Courtesy of Art Gallery Quilts LLC. All Rights Reserved.

## FABRIC REQUIREMENTS

Fabric <b>A</b>	HRT-85304	Fat 8
Fabric <b>B</b>	HRT-95308	Fat 8
Fabric <b>C</b>	HRT-95300	Fat 8
Fabric <b>D</b>	HRT-85308	Fat 8
Fabric <b>E</b>	HRT-85306	Fat 8
Fabric <b>F</b>	HRT-95305	Fat 8
Fabric <b>G</b>	HRT-95306	Fat 8
Fabric <b>H</b>	HRT-95302	Fat 8
Fabric <b>I</b>	HRT-95303	Fat 8
Fabric <b>J</b>	HRT-95309	Fat 8
Fabric <b>K</b>	HRT-85303	Fat 8
Fabric <b>L</b>	HRT-95304	Fat 8
Fabric <b>M</b>	HRT-95307	Fat 8
Fabric <b>N</b>	HRT-85307	Fat 8
Fabric <b>O</b>	HRT-85309	Fat 8
Fabric <b>P</b>	PE-430	$\frac{5}{8}$ yd

## CUTTING DIRECTIONS

### 2 1/2" Squares

Four (4) Fabric **A, E**, and **L**

Three (3) Fabric **B, D, G**, and **H**

Six (6) Fabric **C**

Two (2) Fabric **F, I, J, K**, and **M**

One (1) Fabric **N and O**

Three (3) 1 1/2" x 23 1/2" strips from Fabric **P**

Two (2) 1 1/2" x 17 1/2" strips from Fabric **P**

Two (2) 1 1/2" x 14 1/2" strips from Fabric **P**

Two (2) 1 1/2" x 7 1/2" strips from Fabric **P**

Two (2) 1 1/2" x 5 1/2" strips from Fabric **P**

Thirty Four (34) 1 1/2" x 2 1/2" strips from Fabric **P**

Two (2) 11" x 17" rectangles from Fabric **P**

## CONSTRUCTION

*Sew all rights sides together with 1/4" seam allowance unless otherwise noted.*

- Following Diagram 1, sew row 1-8. Inbetween each 2 1/2" square sew a 1 1/2" x 2 1/2" strip from Fabric **P**.
- Once your rows are complete, sew your sashing strips:
- Sew 1 1/2" x 23 1/2" strips between row 4 and 5, 3 and 4 and 5 and 6.
- Sew a 1 1/2" x 17 1/2" strip between row 2 and 3 and 6 and 7.
- Sew a 1 1/2" x 14 1/2" strip between row 1 and 2 and 7 and 8.
- Sew a 1 1/2" x 5 1/2" strip at the beginning of row 1 and the end of row 8.
- Sew a 1 1/2" x 7 1/2" strip at the top and bottom of row 4.
- Lay piece on the diagonal and square off piece at 17" x 17". (Diagram 2)
- Place batting behind your piece and quilt as desired.

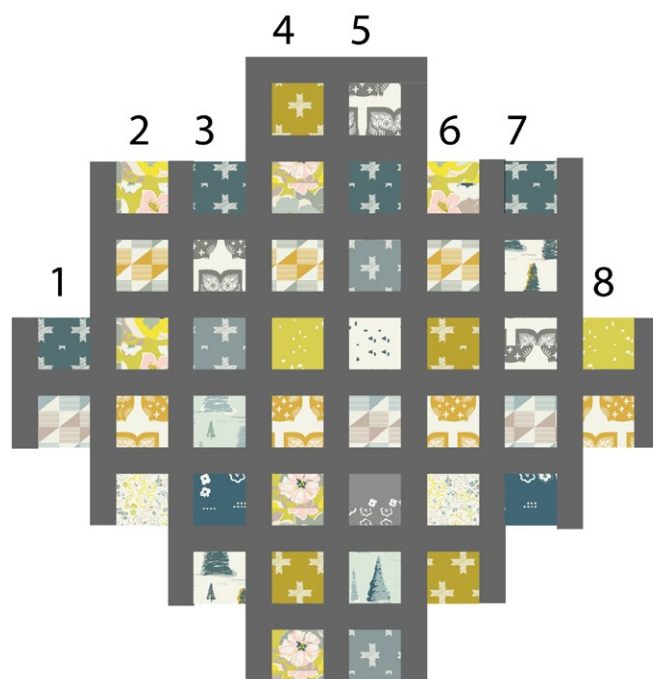


DIAGRAM 1



DIAGRAM 2

### Creating the Back Pillow

- To make a envelope back for your pillow take both 11" x 17" rectangles and fold one 17" side on each rectangle in 1/2" and press and then fold another 1/2" and press.
- Topstitch as close to the edge as possible.
- Place rectangles right side together on top of each other to the front of your pillow and stitch all the way around your pillow at 1/2" seam allowance.
- Clip corners at seam allowance and flip piece to the right side of the fabric.
- Fill pillow with a 16" x 16" pillow form and enjoy!



# Happy Sewing



To see more patterns, fabrics  
and lots of inspiration visit:

[patbravo.com](http://patbravo.com)

NOTE: While all possible care has been taken to ensure the accuracy of this pattern, We are not responsible for printing errors or the way in which individual work varies.

Please read instructions carefully before starting the construction of this quilt. If desired, wash and iron your fabrics before starting to cut.

© 2016 Courtesy of Pat Bravo All Rights Reserved.