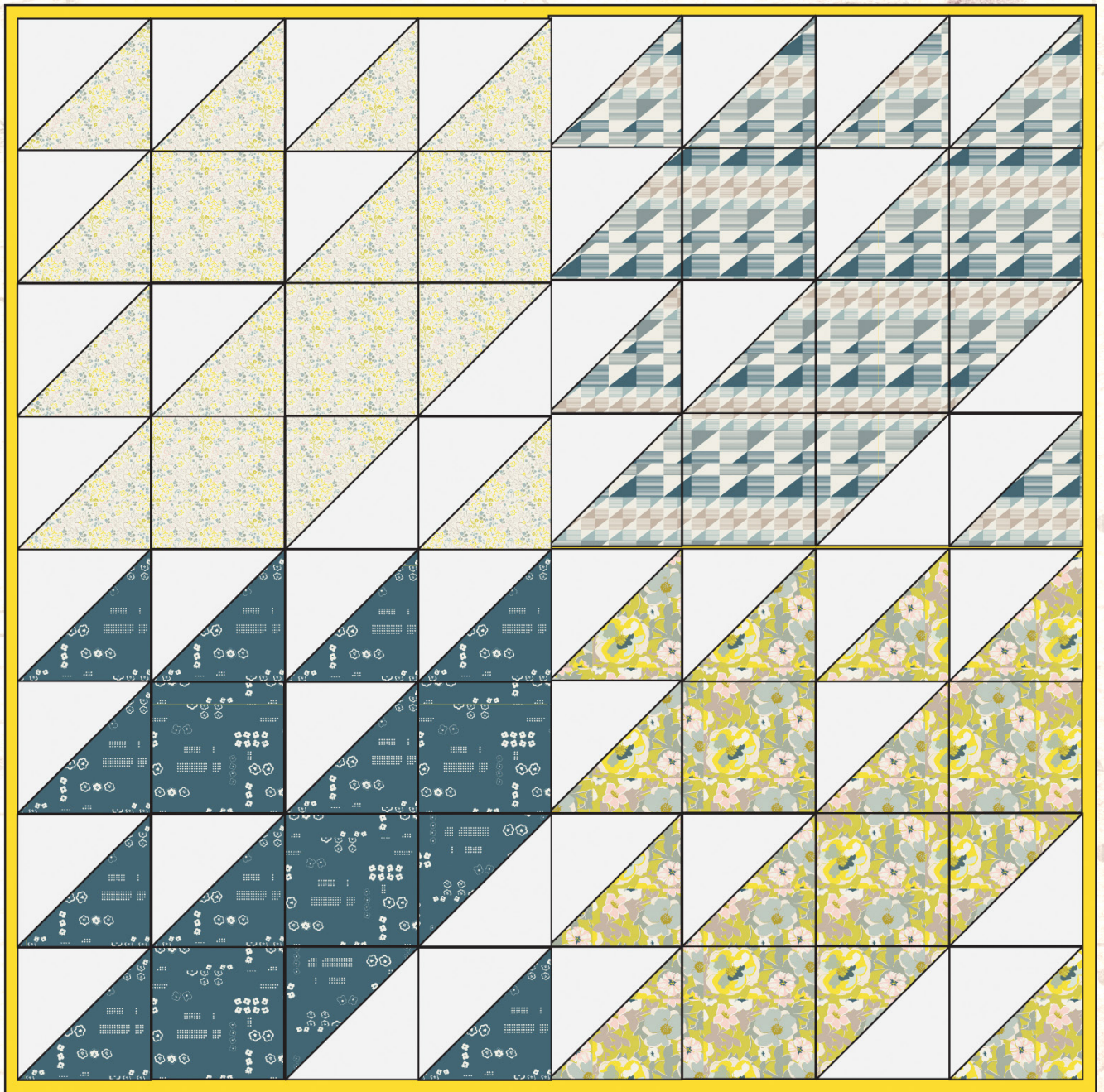


featuring #HeartlandFabrics



SYNNÖVE





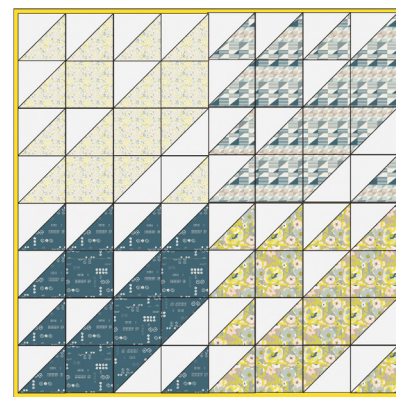
MINI QUILT DESIGNED BY PAT BRAVO



Pat Bravo



FABRICS DESIGNED BY PAT BRAVO

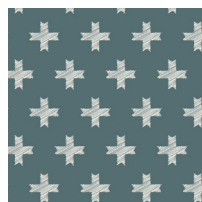


COLOR OPTION

VERMA FIELD



HRT-85300
BLOMMA GARDEN
PASTICHE



HRT-85304
UNN CROSS PINE



HRT-85303
PINETRE DAYBREAK



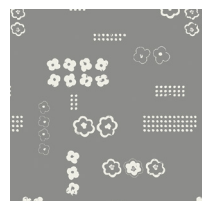
HRT-85306
HUS HOOT GUL



HRT-85308
TREKANT ROWS
CANDID



HRT-85310
DULCET PATHS PASTEL



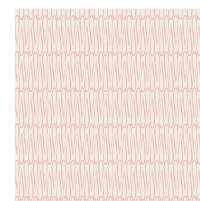
HRT-85309
SCANDI PLANE GREY



HRT-85305
LITEN DISTY FIELD



HRT-85307
DROPPAR MOONDUST



HRT-85301
REGN DROPS SUN

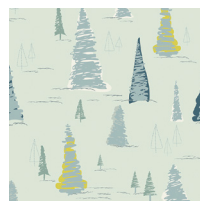
LUCNA MEADOW



HRT-95300
BLOMMA GARDEN
GOLDEN



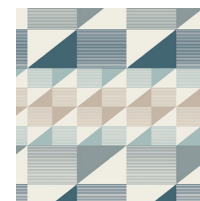
HRT-95302
SCANDI PLANE GREY



HRT-95303
PINETRE FROG



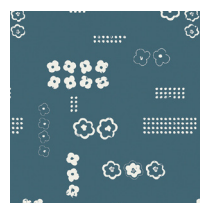
HRT-95306
HUS HOOT GRA



HRT-95308
TREKANT ROWS
BREEZE



HRT-95310
DULCET PATHS MIST



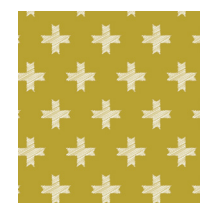
HRT-95309
SCANDI PLANE BALTIC



HRT-95305
LITEN DISTY WHISPER



HRT-95307
DROPPAR BURST



HRT-95304
UNN CROSS OCHRE



FEEL THE DIFFERENCE © 2016 Courtesy of Art Gallery Quilts LLC. All Rights Reserved.



FINISHED SIZE | 20½" x 20"

FABRIC REQUIREMENTS

Fat Eight of HRT-95300
 Fat Eight of HRT-95308
 Fat Eight of HRT- 95305
 Fat Eight of HRT - 95309
 Fat Quarter of PE - 408

FOR BACKING AND BINDING FABRIC
 1 YD of PE- 407. *(Suggested)*

CUTTING DIRECTIONS

- Cut 10 (ten) 3" by 3" squares of HRT - 95309
- Cut 10 (ten) 3" by 3" squares of HRT - 95300
- Cut 10 (ten) 3" by 3" squares of HRT - 95308
- Cut 10 (ten) 3" by 3" squares of HRT - 95305
- Cut 24 (twenty-four) 3" by 3" squares of PE - 408

CONSTRUCTION

Take five (5) squares of HRT-95305 and cut them diagonally HST
 Take six (6) squares of PE-48 and cut them diagonally HST
 In order to create the HST grab one already cut piece from
 HRT-95305 and one piece from PE-408 and one piece from
 PE-408 and sew them together as explained in **DIAGRAM A**



DIAGRAM A

Repeat this step 12 times. You will end up with 12 HST

Once all the HST are created, get the last 4 (four) HRT-95305 and start creating the blocks as explain on **DIAGRAM B**



DIAGRAM B

Make Half Square Triangles 3 more times with HRT-95305,
 HRT-95300 and HST95305.
 Once the three blocks are completed, it is time to attach them
 together, as explained in **DIAGRAM C**

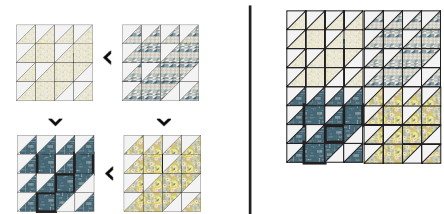


DIAGRAM C

QUILT ASSEMBLY

Sew rights sides together.

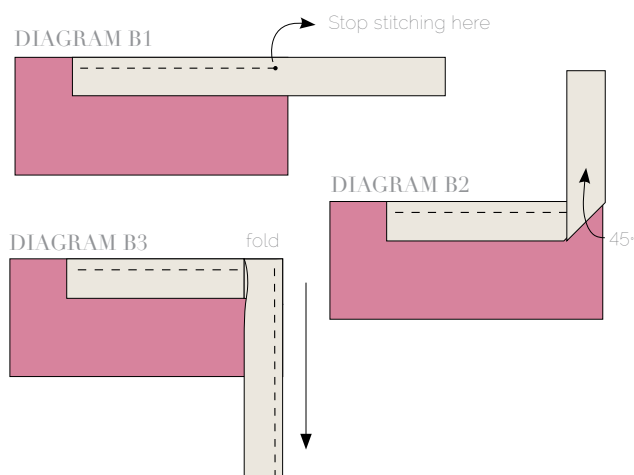
- Place BACKING FABRIC on a large surface wrong side up. Stretch it with masking tape against that surface.
- Place BATTING on top of backing fabric.
- Place TOP on top of the batting with right side facing up. Smooth away wrinkles using your hands.
- Pin all layers together and baste with basting thread, using long stitches. You can also use safety pins to join the layers.
- Machine or hand quilt starting at the center and working towards the corners. Remember that quilting motifs are a matter of personal preference. Have fun choosing yours!
- After you finished, trim excess of any fabric or batting, squaring the quilt to proceed to bind it.

BINDING

Sew rights sides together.

- Cut enough strips 1 ½" wide by the width of PE-408 to make a final strip 180" long. Fold strip in half and press. Start sewing the binding strip in the middle of one of the sides of the quilt, placing the strip right side down with the fold edge of your binding facing in and leaving an approximated 5" tail. Sew with ¼" seam allowance (using straight stitch), aligning the strip's raw edge with the quilt top's raw edge.
- Stop stitching ¼" before the edge of the quilt (**DIAGRAM B 1**). Clip the threads. Remove the quilt from under the machine presser foot. Fold the strip in a motion of 45° and upward, pressing with your fingers (**DIAGRAM B2**). Hold this fold with your finger, bring the strip down in line with the next edge, making a horizontal fold that aligns with the top edge of the quilt (**DIAGRAM B3**).

- Start sewing at ¼" of the border, stitching all the layers. Do the same in the four corners of the quilt.
- Stop stitching before you reach the last 5 or 6 inches. Cut the threads and remove the quilt from under the machine presser foot. Lay the loose ends of the binding flat along the quilt edge, folding the ends back on themselves where they meet. Press them together to form a crease. Using this crease as the stitching line, sew the two open ends of the binding with right sides together (you can help yourself marking with a pencil if the crease is difficult to see).
- Trim seam to ¼" and press open. Complete the sewing. Turn binding to back of the quilt, turn raw edge inside and stitch by hand using blind stitch.



NOTE: While all possible care has been taken to ensure the accuracy of this pattern, We are not responsible for printing errors or the way in which individual work varies.

Please read instructions carefully before starting the construction of this quilt. If desired, wash and iron your fabrics before starting to cut.

Happy Sewing

#PatBravoDesign



To see more patterns, fabrics
and lots of inspiration visit:

patbravo.com

NOTE: While all possible care has been taken to ensure the accuracy of this pattern, we are not responsible for printing errors or the way in which individual work varies. Please read instructions carefully before starting the construction of this quilt. If desired, wash and iron your fabrics before starting to cut.

© 2016 Courtesy of Pat Bravo All Rights Reserved.