

featuring #Heartlandfabrics



Roots



Roots

PLACE MATS DESIGNED BY PAT BRAVO

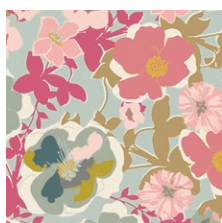


heartland

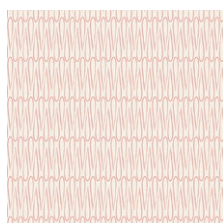
FABRICS DESIGNED BY PAT BRAVO



WARM FIELD



HRT-85300
BLOMMA GARDEN PASTICHE



HRT-85301
REGN DROPS SUN



HRT-85303
PINETRE DAYBREAK



HRT-85304
UNN CROSS PINE



HRT-85305
LITEN DITSY FIELD



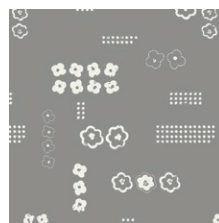
HRT-85306
HUS HOOT GUL



HRT-85307
DROPPAR MOONDUST



HRT-85308
TREKANT ROWS CANDID



HRT-85309
SCANDI PLANE GREY



HRT-85310
DULCET PATHS PASTELL

LUCNA MEADOW



HRT-95300
BLOMMA GARDEN GOLDEN



HRT-95302
UNN CROSS SILVER



HRT-95303
PINETRE FOG



HRT-95304
UNN CROSS OCHRE



HRT-95305
LITEN DITSY WHISPER



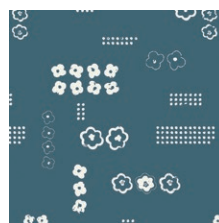
HRT-95306
HUS HOOT GRA



HRT-95307
DROPPAR BURST



HRT-95308
TREKANT ROWS BREEZE



HRT-95309
SCANDI PLANE BALTIC



HRT-95310
DULCET PATHS MIST



FEEL THE DIFFERENCE © 2016 Courtesy of Art Gallery Quilts LLC. All Rights Reserved.

FINISHED SIZE 10" x 15"

FABRIC REQUIREMENTS

Blue Version:

Fabric A	HRT-85307	scraps
Fabric B	HRT-95308	¼ yd.
Fabric C	HRT-85304	scraps
Fabric D	HRT-85303	scraps
Fabric E	HRT-95302	scraps
Fabric F	HRT-95306	scraps
Fabric G	HRT-95303	scraps
Fabric H	HRT-95309	scraps
Fabric I	DEN-S-2003	scraps
Fabric J	DEN-S-2004	scraps

BACKING FABRIC

DEN-L-4000- ⅓ yd. (*Suggested*)

BINDING FABRIC

HRT-95308 (Fabric B) (*included*)

Pink Version:

Fabric A	HRT-85300	scraps
Fabric B	HRT-85301	scraps
Fabric C	HRT-95304	scraps
Fabric D	HRT-85306	scraps
Fabric E	HRT-95307	scraps
Fabric F	HRT-95305	scraps
Fabric G	HRT-85308	¼ yd.
Fabric H	HRT-95300	scraps
Fabric I	HRT-85308	scraps
Fabric J	HRT-95300	scraps
Fabric K	HRT-95300	scraps

BACKING FABRIC

DEN-L-4000- ⅓ yd. (*Suggested*)

BINDING FABRIC

HRT-85308 (Fabric G) (*included*)

CUTTING DIRECTIONS

¼" seam allowances are included.
WOF means width of fabric.

Blue Version:

One Hexagon from Fabric A,B,C,E,F,G,,H,I, and J
Two from Fabric D

DEN-L-4000-
Background- 10" x 15"
Backing 10" x 15"

Pink Version:

One Hexagon from Fabric A-K

DEN-L-4000-
Background- 10" x 15"
Backing 10" x 15"

CONSTRUCTION

Sew all rights sides together with ¼" seam allowance.

- Cut out 11 hexagon templates on card-stock paper. (Finished Hexagon)
- Following the cutting directions cut out hexagons from fabric using the template with seam allowance.
- Feel free to glue, or hand baste your hexagon fabric pieces to your card-stock template.
- Take hexagon fabric pieces and place your hexagon template in the center of your piece on the wrong side of the fabric and pin into place. (Diagram 1)

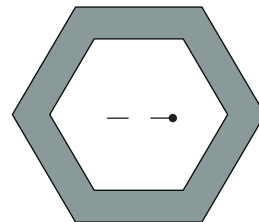


DIAGRAM 1

- Fold the top raw edge of your hexagon over your template. (Diagram 2)
- With your thumb hold fabric down over the pointed edge and fold over other side of fabric with your other hand. Hold with your thumb and from the left to the right, stitch twice at the beginning to secure your thread so you don't have to create a knot at the end of your thread. (Diagram 3)

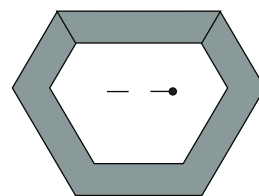


DIAGRAM 2

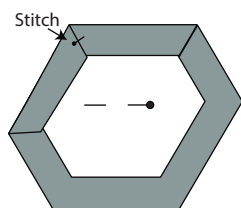


DIAGRAM 3

- Repeat this same process for all the sides of your hexagon, stitching from left to right on each corner. When you get to the last corner stitch twice to secure end.
- Remove pin and give your hexagon a good press.
- Hand stitch hexagons together with a whip stitch following the place mat illustration.
- Once they are sewn together remove the paper.
- Or you can remove the paper templates and individually place hexagons to background fabric, batting and backing. Topstitch around each hexagon to secure to background fabric.
- If you whip stitched hexagons together, pin to background fabric, batting piece, and backing. Quilt as desired to secure hexagons and background and backing.
- Square off piece and attach binding.

- Start sewing at $\frac{1}{4}$ ' of the border, stitching all the layers. Do the same in the four corners of the quilt.
- Stop stitching before you reach the last 5 or 6 inches. Cut the threads and remove the quilt from under the machine presser foot. Lay the loose ends of the binding flat along the quilt edge, folding the ends back on themselves where they meet. Press them together to form a crease. Using this crease as the stitching line, sew the two open ends of the binding with right sides together (you can help yourself marking with a pencil if the crease is difficult to see).
- Trim seam to $\frac{1}{4}$ ' and press open. Complete the sewing. Turn binding to back of the quilt, turn raw edge inside and stitch by hand using blind stitch.

DIAGRAM B1

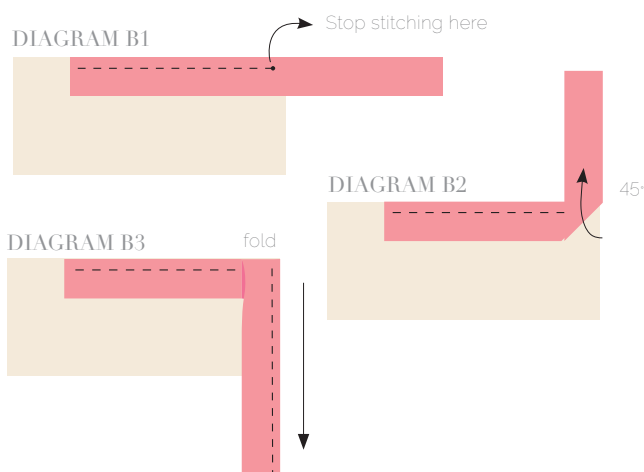


DIAGRAM B2

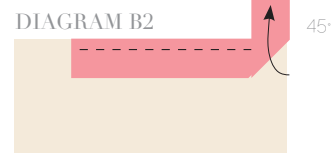
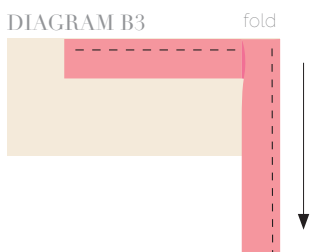


DIAGRAM B3

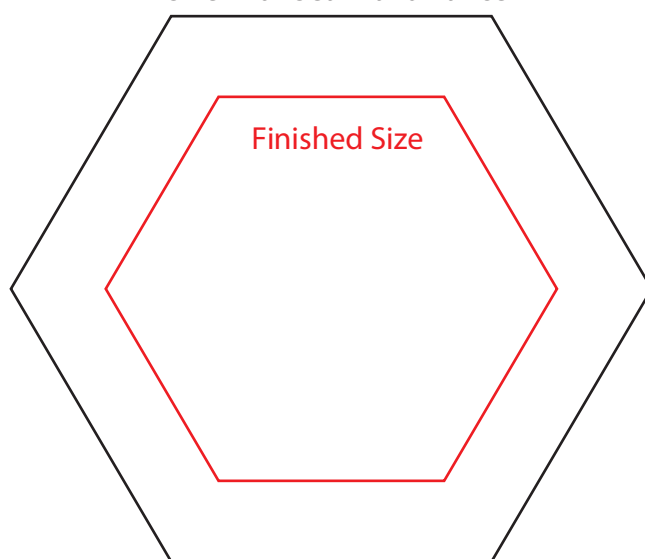


BINDING

Sew rights sides together.

- Cut enough strips $1\frac{1}{2}$ ' wide by the width of the fabric **B** or **D** to make a final strip 60' long. Fold strip in half and press. Start sewing the binding strip in the middle of one of the sides of the quilt, placing the strip right side down with the fold edge of your binding facing in and leaving an approximated 5' tail. Sew with $\frac{1}{4}$ ' seam allowance (using straight stitch), aligning the strip's raw edge with the quilt top's raw edge.
- Stop stitching $\frac{1}{4}$ ' before the edge of the quilt (**DIAGRAM B 1**). Clip the threads. Remove the quilt from under the machine presser foot. Fold the strip in a motion of 45° and upward, pressing with your fingers (**DIAGRAM B2**). Hold this fold with your finger, bring the strip down in line with the next edge, making a horizontal fold that aligns with the top edge of the quilt (**DIAGRAM B3**).

Size with Seam allowance



Happy Sewing

#PatBravoDesign



To see more patterns, fabrics
and lots of inspiration visit:

patbravo.com

NOTE: While all possible care has been taken to ensure the accuracy of this pattern, we are not responsible for printing errors or the way in which individual work varies. Please read instructions carefully before starting the construction of this quilt. If desired, wash and iron your fabrics before starting to cut.

© 2016 Courtesy of Pat Bravo All Rights Reserved.