

featuring #Heartlandfabrics





QUILT DESIGNED BY PAT BRAVO



Pat Bravo

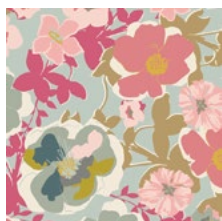
heartland

FABRICS DESIGNED BY PAT BRAVO

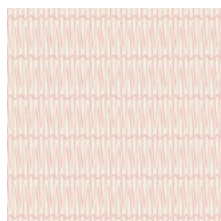


COLOR OPTION

WARM FIELD



HRT-85300
BLOMMA GARDEN PASTICHE



HRT-85301
REGN DROPS SUN



HRT-85303
PINETRE DAYBREAK



HRT-85304
UNN CROSS PINE



HRT-85305
LITEN DITSY FIELD



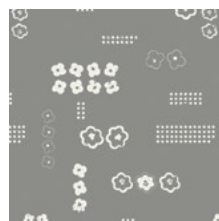
HRT-85306
HUS HOOT GUL



HRT-85307
DROPPAR MOONDUST



HRT-85308
TREKANT ROWS CANDID



HRT-85309
SCANDI PLANE GREY



HRT-85310
DULCET PATHS PASTELL

LUCNA MEADOW



HRT-95300
BLOMMA GARDEN GOLDEN



HRT-95302
UNN CROSS SILVER



HRT-95303
PINETRE FOG



HRT-95304
UNN CROSS OCHRE



HRT-95305
LITEN DITSY WHISPER



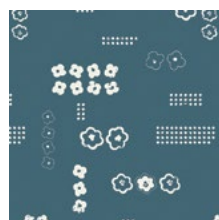
HRT-95306
HUS HOOT GRA



HRT-95307
DROPPAR BURST



HRT-95308
TREKANT ROWS BREEZE



HRT-95309
SCANDI PLANE BALTIC



HRT-95310
DULCET PATHS MIST



FEEL THE DIFFERENCE © 2016 Courtesy of Art Gallery Quilts LLC. All Rights Reserved.



FINISHED SIZE | 18" x 18"

FABRIC REQUIREMENTS

Fabric A	HRT-85307	7/8 yd
Fabric B	HRT-95300	1/4 yd
Fabric C	HRT-85304	1/8 yd
Fabric D	HRT-95305	1/8 yd
Fabric E	HRT-85309	1/8 yd
Fabric F	PE-406	1/8 yd
Fabric G	HRT-85306	1/4 yd

BACKING FABRIC

HRT-85300 (Fabric A) *(included)*

- These are scrap friendly cuts, if you have Heartland scraps there is a good chance that you may have enough fabric for these parts.

Pattern Assembly instructions:

- Print out the attached pattern pages at 100% original size. You can double-check they are printing at the right size by measuring the 1" square on the first page. If it is smaller than 1" check the scaling settings on the print properties and make sure "fit to page" or similar is not marked and that it is set up at "no scaling" or "100% original size."
- Glue or tape together the rectangles, matching the page notches and --lines. See the Pattern Assembly illustration below. Cut out the pattern sections A-H. Note that if you use tape you may want to use a press-cloth or press carefully so as not to melt the tape against the iron when pressing.

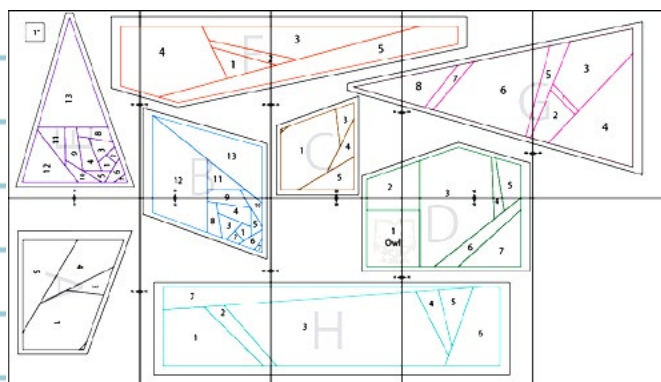


DIAGRAM 1

Notes on the Pattern:

- If you have never done any paper piecing prior to this project- congratulations on choosing to tackle this pillow for your first project! However, we recommend that you spend a couple minutes viewing some free video tutorials on the basics of paper piecing and then read the instructions thoroughly before beginning.
- The pattern piece sections A-H have seam allowance marked on the outside edges only. Interior lines on the patterns are sewing lines. You will measure out 1/4" seam allowance from your sewing lines and trim the pieces as you go. You may notice the seam allowance around the pattern sections is sometimes 1/2" instead of 1/4". All interior seams are marked with 1/4" seam allowance, and all the outside edges are marked with 1/2" to sew around the pillow at 1/2" at the end.

CUTTING DIRECTIONS

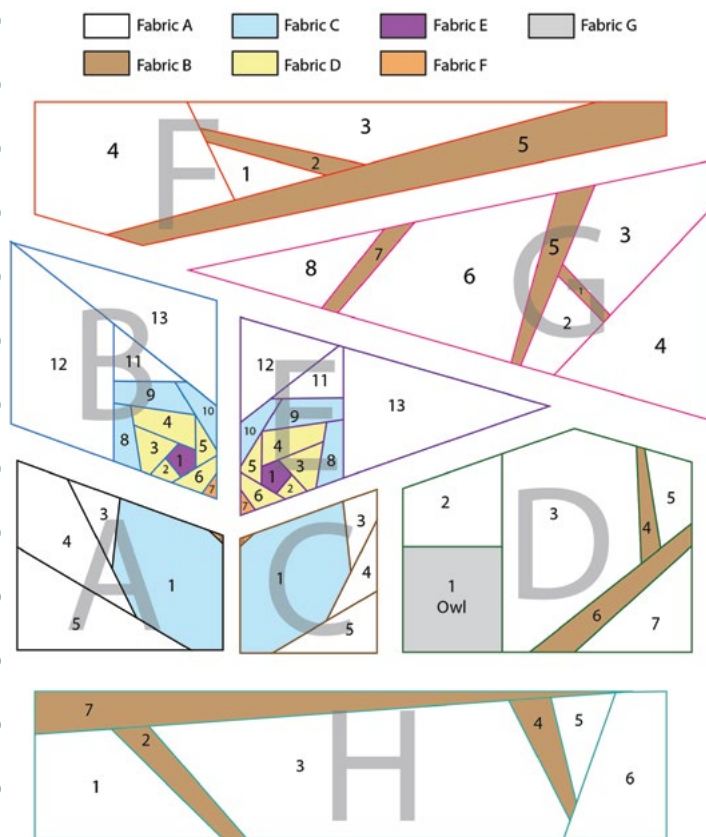
*1/4" seam allowances are included.
WOF means width of fabric.*

One (1) 19" x 14" rectangle from Fabric A

One (1) 19" x 8" rectangle from Fabric A

One (1) fussy cut 4 1/2" square from Fabric G with the owl in the center

- Fabric pieces for piecing need to be cut big enough to include the pattern and a 1/4" seam allowance (or 1/2" for the marked pillow edges). It's better to cut bigger and then trim the seam allowance to size after sewing, than to underestimate. Since you trim the seam allowance after sewing pieces it's not necessary to cut the pieces precisely, so long as they are big enough. We recommend you cut the fabric to size as you sew, however if you want extra help cutting pieces print out extra copies of the foundation patterns and cut them apart to use as cutting guides, remember to add seam allowance to them. It is not necessary for pieces to follow grain lines, however you may wish to fussy cut sections of the owl body and eyes, it's up to you.
- Refer to the color-coded fabric pattern sections illustration when cutting fabric to make sure you are piecing the right fabrics together. You may choose to color code your printed & assembled foundation paper sections.



Paper Piecing Instructions

- You will be sewing on the printed side of the paper with the fabric underneath, the numbers are the order you will sew in and the lines are your sewing lines.
- Place the fabric for piece #1 with the wrong side of the fabric against the back of the paper, pin in place and hold the paper up to a desk lamp or window to look through and make sure that the fabric is covering the sewing lines with more than ¼" excess all around.
- Cut out a fabric piece for #2 that covers the pattern and seam allowance. Pin it against the fabric for piece #1 on the sewing line, right sides together, flip it open to double-check that when it's sewn on the line it will completely cover the piece (and seam allowance).
- After checking, turn the paper over printed side up and sew the line between piece #1 and #2, going a few stitches beyond the line when starting and stopping. Make sure you sew with a short stitch length so that the paper is easier to remove at the end.
- Turn the paper over, fold the paper back at the sewn line, measure out ¼" from the seam and trim excess fabric with a rotary cutter or scissors.
- Unfold the pattern, flip the fabric open and press it with a dry iron

- Continue piecing together the rest of the pattern pieces in the same way you added piece #2. Leave fabric extending beyond the outside edges of the pattern section while piecing and when finished sewing the whole section go ahead the trim to the seam allowance lines included around the pattern sections. Leave the paper attached to help you match up the sections.
- Complete sections A, B,C,E,F,G and H in the same manner.
- Section D will be sewn using the same techniques, but for piece #1 you will be using the fussy cut owl fabric. Take special care positioning the owl in the #1 rectangle. So that he doesn't look like he's floating, you'll want his feet close to the bottom edge. Pin or glue-stick baste him place and continue piecing as usual.

Assembling the Sections:

- First sew:
- A to B
- F to G
- C to D
- Then Sew:
- CD to E
- Then Sew:
- AB to CDE
- Then Sew:
- FG to ABCDE
- Finally Sew:
- ABCDEFGF to H
- Press the pillow top.

Quilting the Pillow Top:

- Place your pillow top onto a square of batting slightly larger than your 19" square pillow top.
- Choose your quilting motif and quilt away! For our pillows we chose to free motion quilt the background with tree and leaf motifs, embellish the owl eyes, outline the small owl and stitch in the ditch around the branches so that the owls and branches they were on would stay puffy & dimensional.
- Trim to a 19" square when finished quilting.

ASSEMBLY

Sew rights sides together.

- Take your fabric **A** rectangles and on one 19" side each press under $\frac{1}{4}$ " and then again another $\frac{1}{2}$ ". Edge stitch close to the fold & press.
- Now, with right sides together, line up the raw 19" edges of the rectangles to the sides of the pillow top. The finished edges of the rectangles will overlap, creating an envelope pillow back.
- Sew around the edge of the pillow at $\frac{1}{2}$ ". Finish the edges with an overcast stitch for reinforcement.
- Turn your pillow inside out, using a chopstick to help you pop out the corners.
- Press & voila! You are ready to stuff with your 18" pillow form and snuggle with owls!



Optional- <http://www.patchpieces.com/files/demoFPP.pdf> for reference for diagrams to correspond with section explaining paper piecing

Happy Sewing

#PatBravoDesign

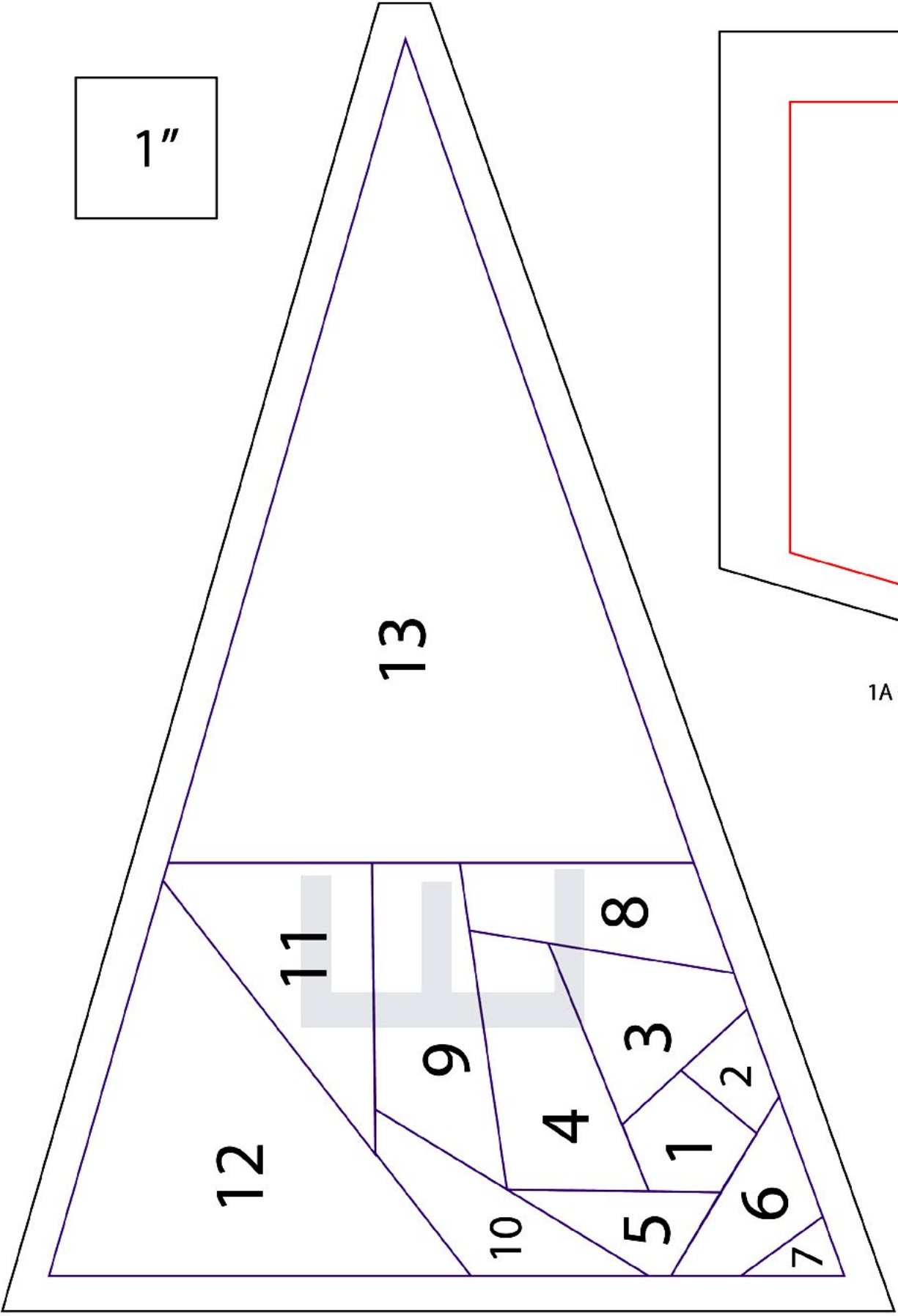


To see more patterns, fabrics
and lots of inspiration visit:

patbravo.com

NOTE: While all possible care has been taken to ensure the accuracy of this pattern, we are not responsible for printing errors or the way in which individual work varies. Please read instructions carefully before starting the construction of this quilt. If desired, wash and iron your fabrics before starting to cut.

© 2016 Courtesy of Pat Bravo All Rights Reserved.



1"

13

11

8

9

3

12

4

1

2

10

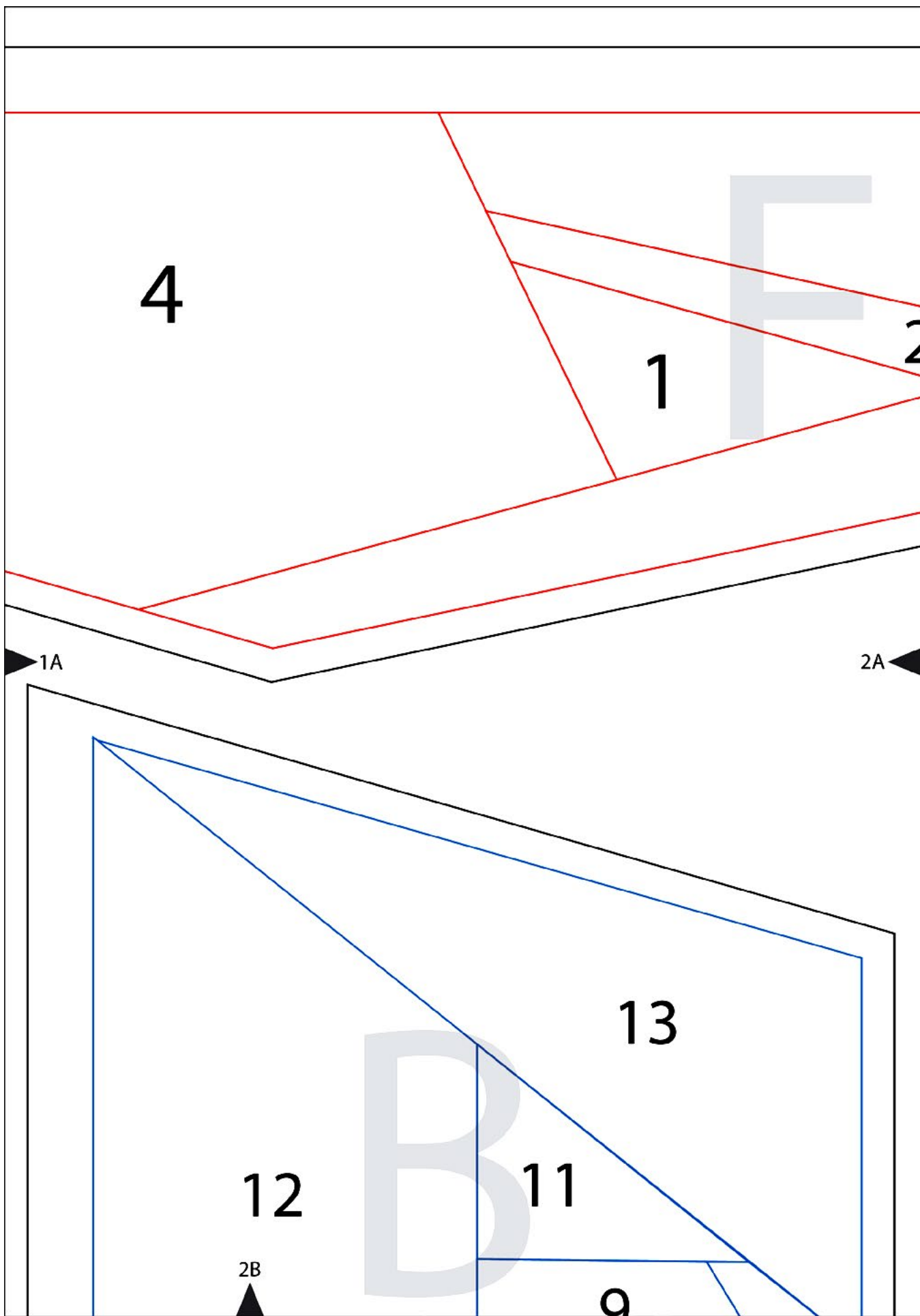
5

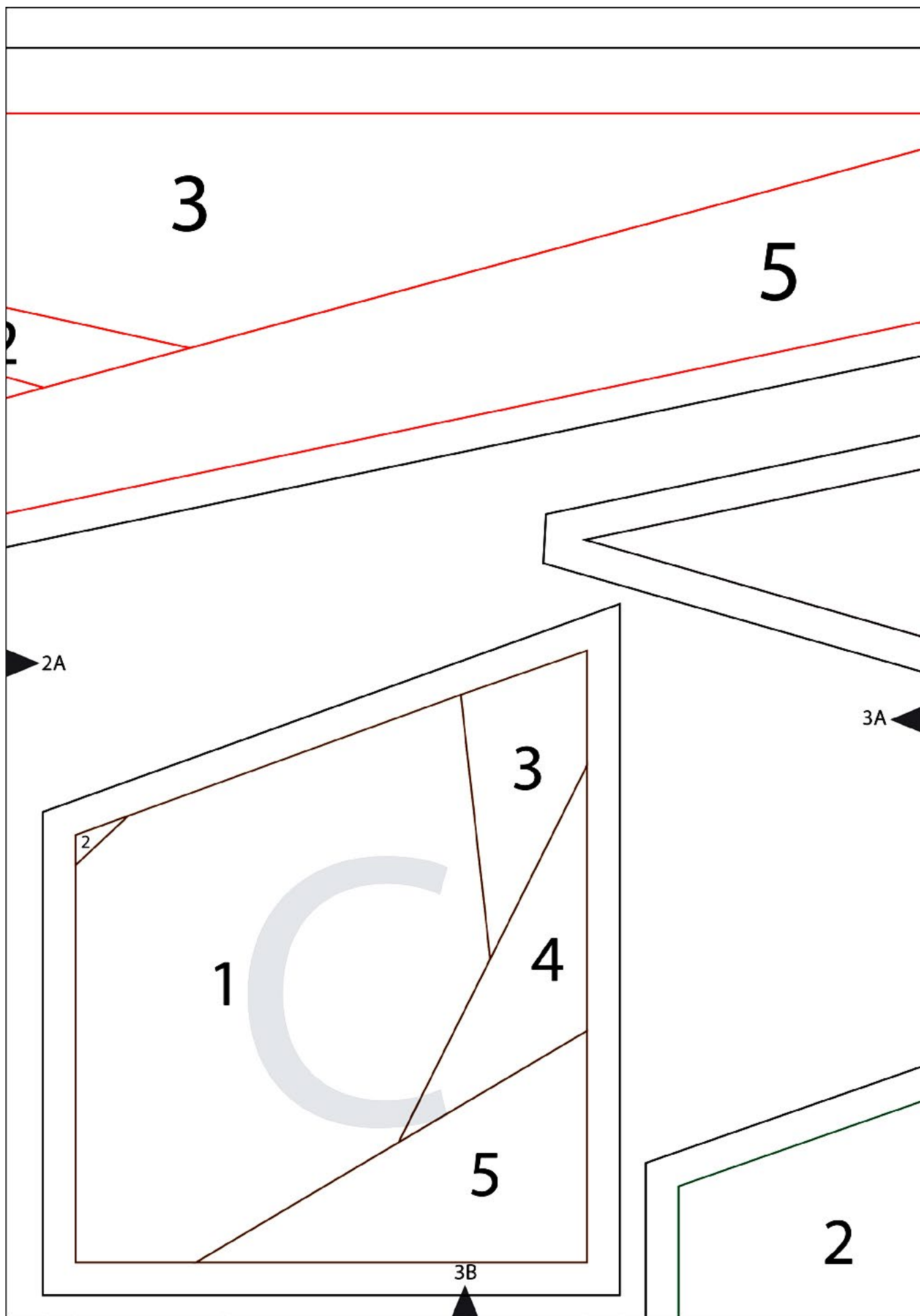
6

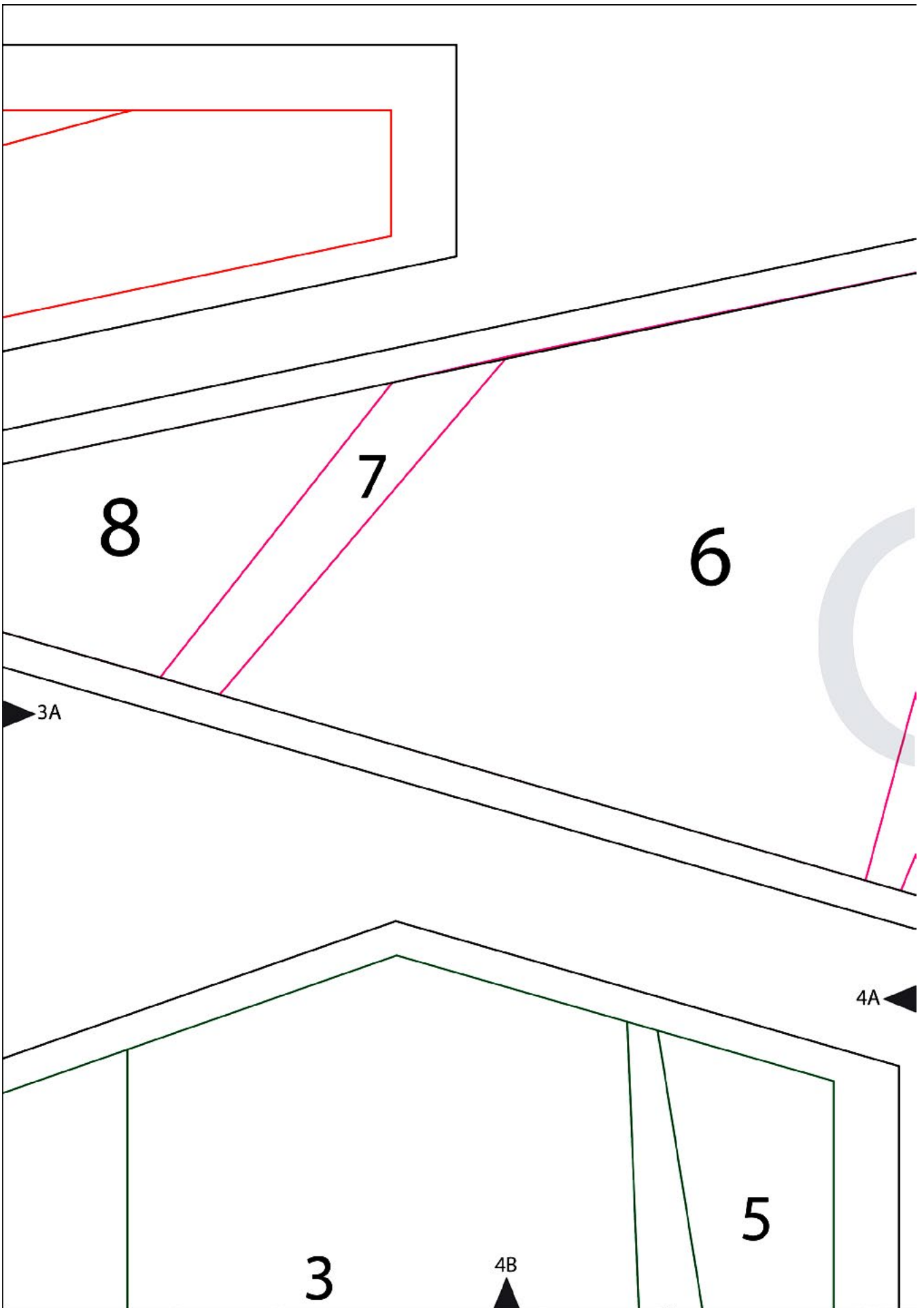
7

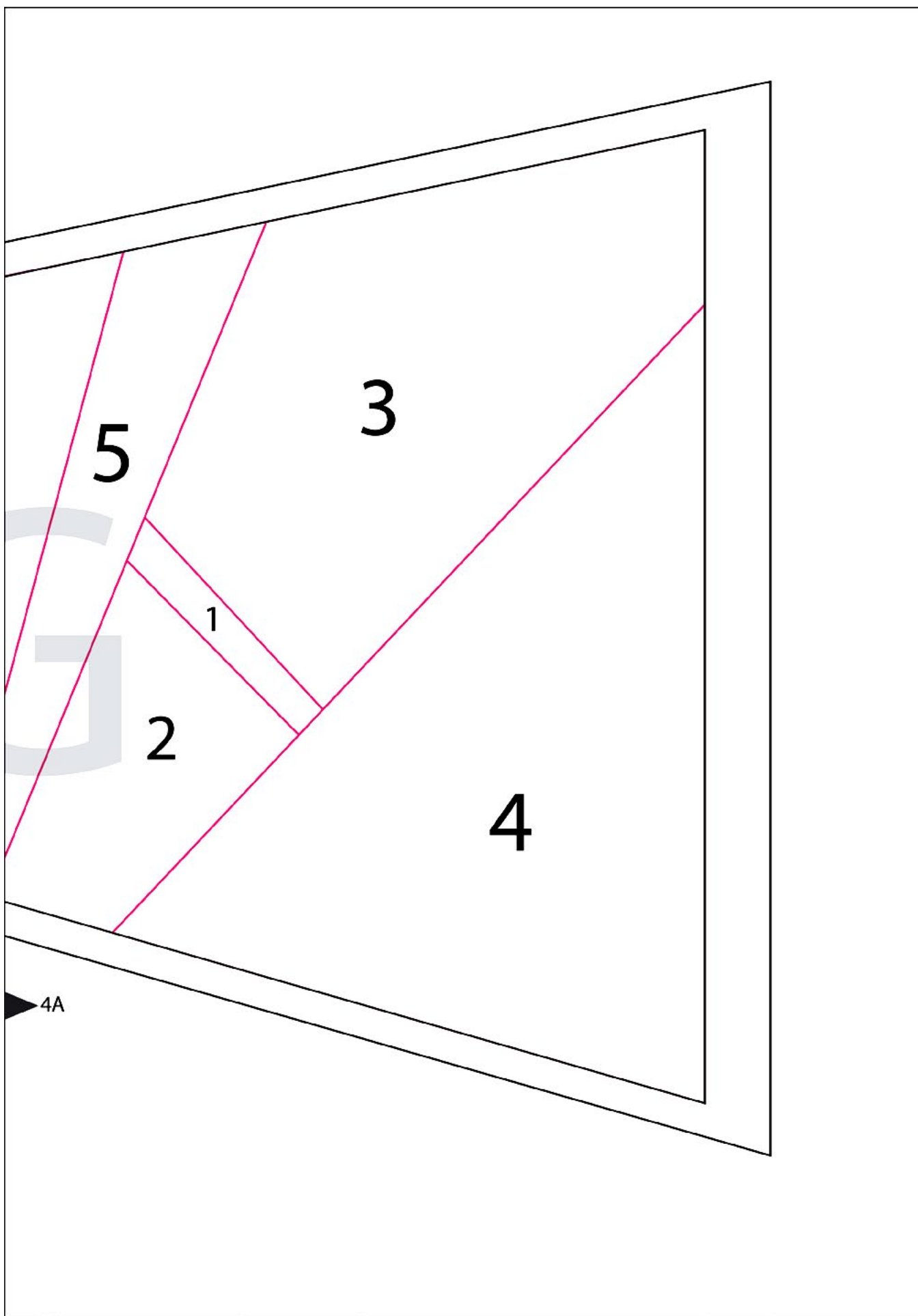
1B

1A



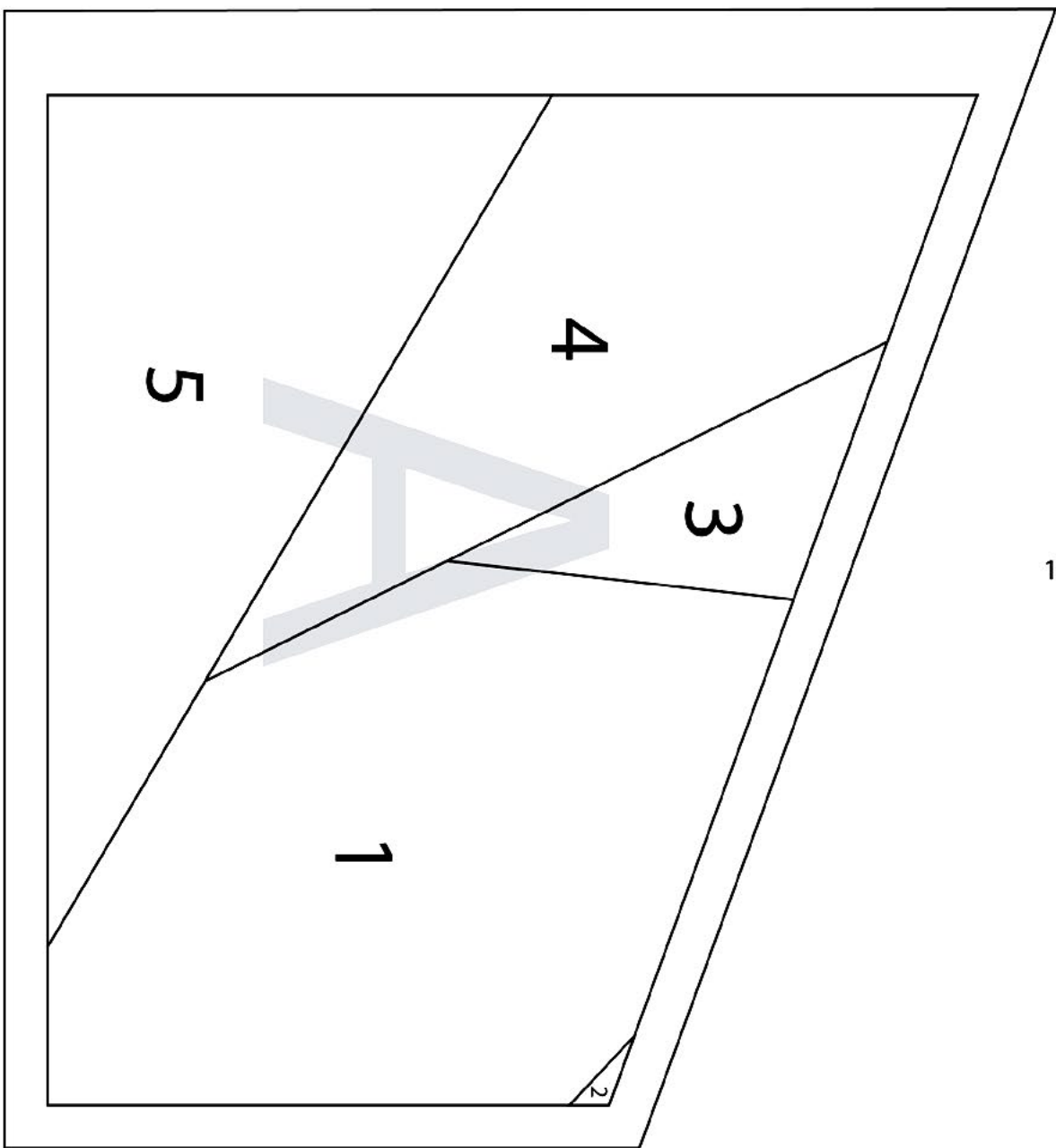


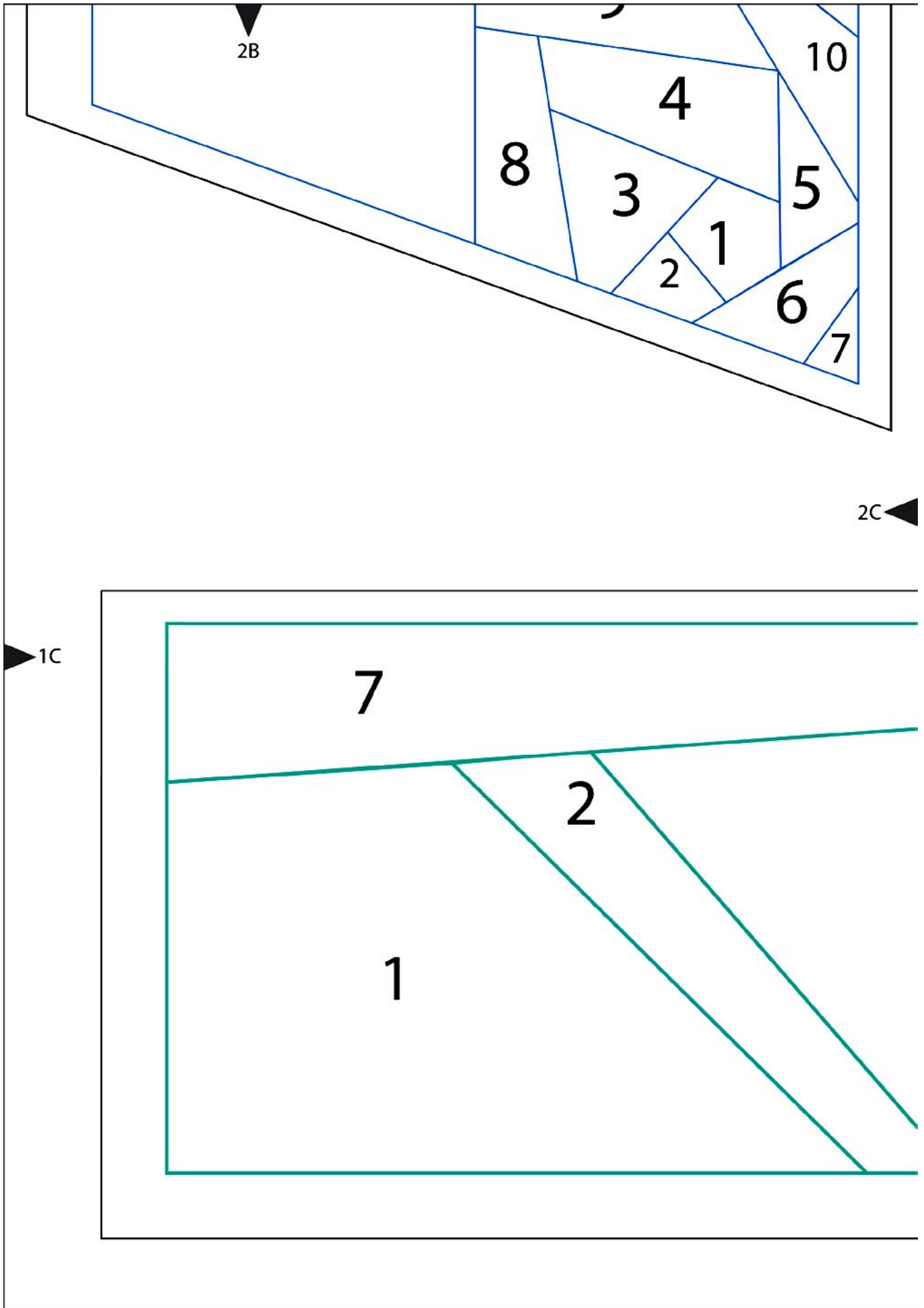




1B

1C





3B

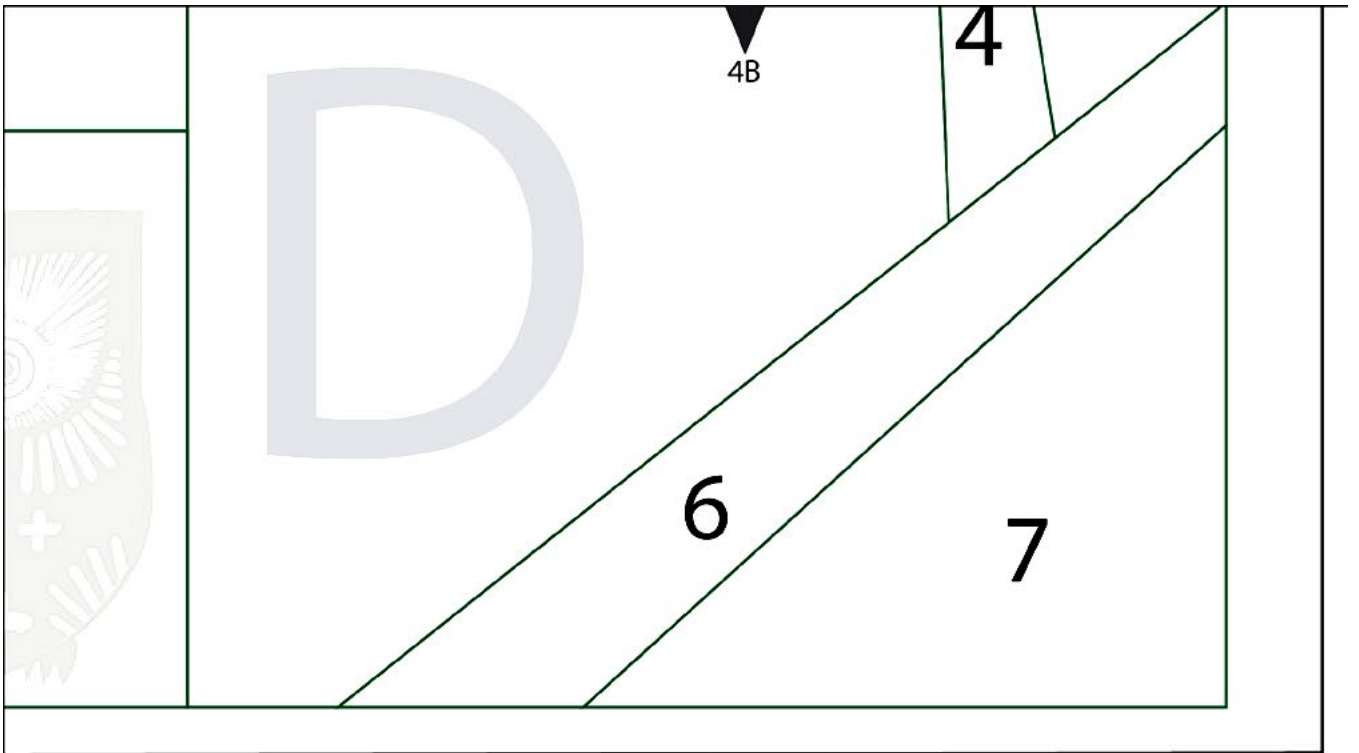
1
Owl

2C

3C

3

H



▶ 3C

