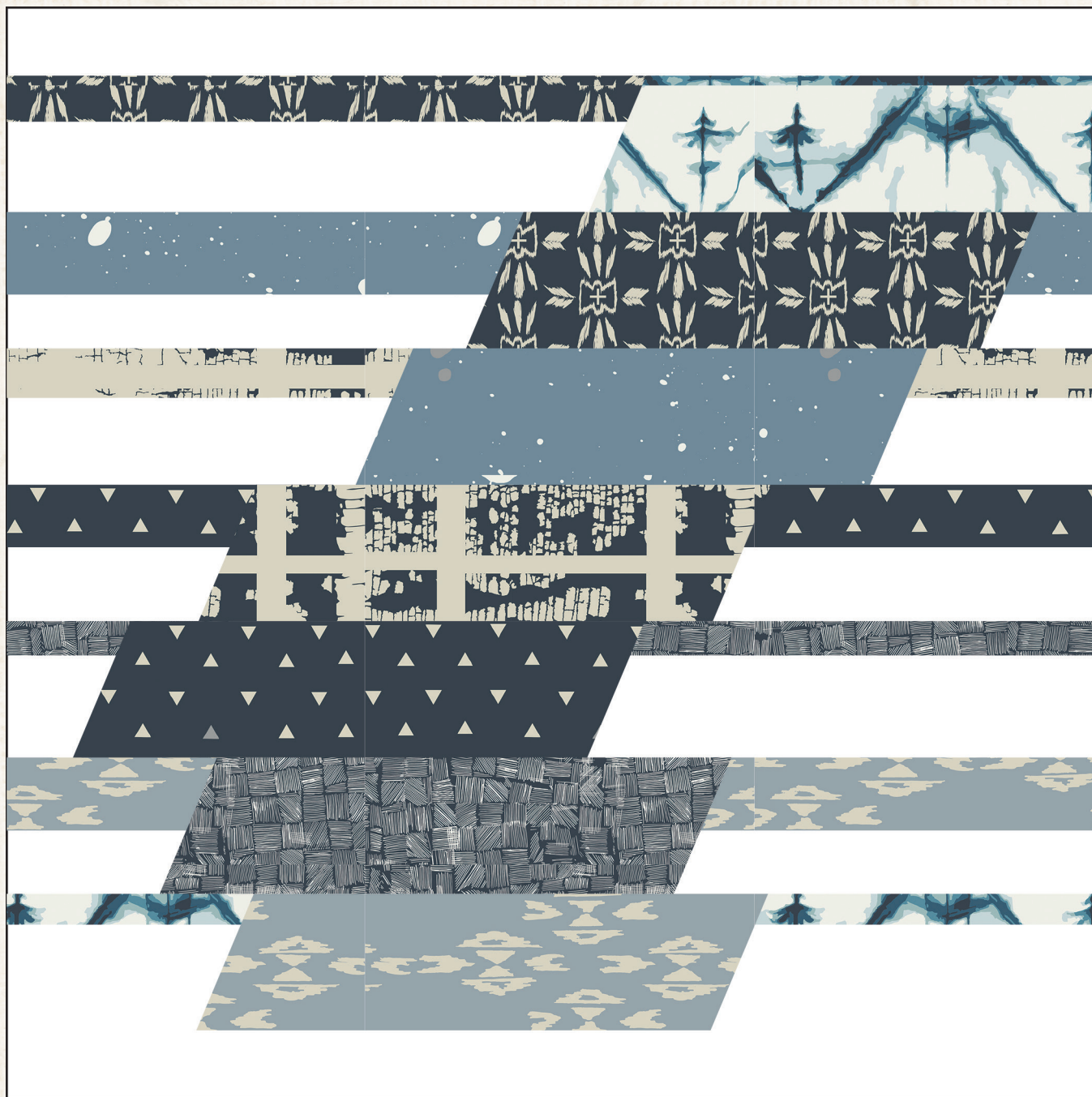


XXXXXX

PILLOW DESIGNED BY AGF STUDIO



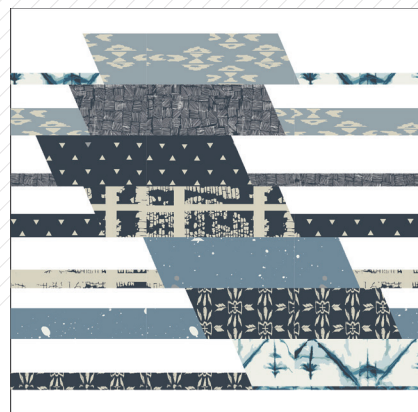
✕ ✕ ✕ ✕ ✕ ✕ ✕ ✕ ✕ ✕ ✕ ✕ ✕ ✕ ✕ ✕ ✕ ✕ ✕



PRAxis

april▲rhodes

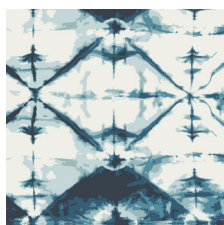
PILLOW DESIGNED BY AGF



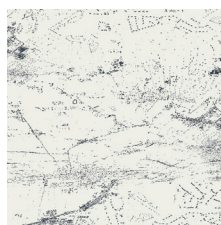
OBSERVER

FABRICS DESIGNED BY APRIL RHODES

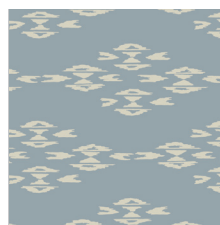
SHARD



OBR-49800
INDIGO WINDOW CRYSTAL



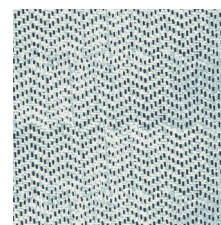
OBR-49801
AERIAL VIEW WHISPER



OBR-49802
OVERSHOT HAZE



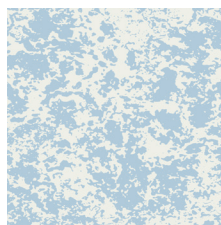
OBR-49803
TRIANGLE TOKENS INK



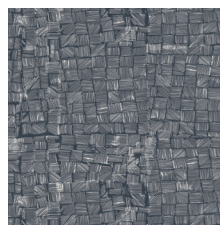
OBR-49804
TREADLE TRADITION



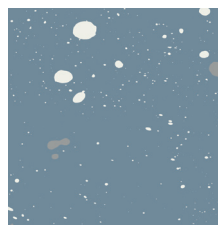
OBR-49805
HOMESPUN PRAXIS



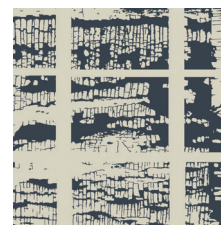
OBR-49806
STONE WASH CLOUDY



OBR-49807
MESH WITH ME MOM

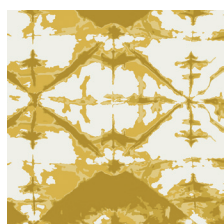


OBR-49808
SPECK STARDUST



OBR-49809
CHIPPING AWAY DEPTH

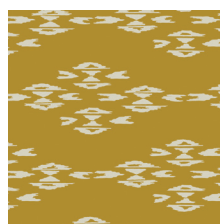
PARTICLE



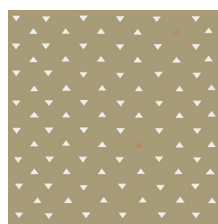
OBR-59800
INDIGO WINDOW SULPHUR



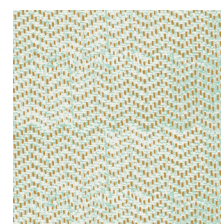
OBR-59801
AERIAL VIEW SAGE



OBR-59802
OVERSHOT GOLD



OBR-59803
TRIANGLE TOKENS HOME



OBR-59804
TREADLE LACE



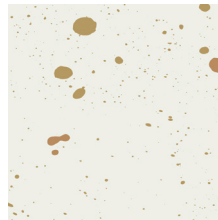
OBR-59805
HOMESPUN WILLOW



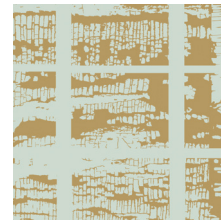
OBR-59806
STONE WASH GLAZE



OBR-59807
MESH WITH ME OLIVE



OBR-59808
SPECK BRONZE



OBR-59809
CHIPPING AWAY MICA



FEEL THE DIFFERENCE © 2016 Courtesy of Art Gallery Quilts LLC. All Rights Reserved.

PRAXIS

FINISHED SIZE | 16" x 16"

FABRIC REQUIREMENTS

Fabric A	OBR-49800	⅓ yd.
Fabric B	OBR-49805	⅓ yd.
Fabric C	OBR-49808	⅓ yd.
Fabric D	OBR-49809	⅓ yd.
Fabric E	OBR-49803	⅓ yd.
Fabric F	OBR-49807	⅓ yd.
Fabric G	OBR-49802	⅓ yd.
Fabric H	PE-408	¾ yd.

*Check your observer scraps & the cutting directions as this is a scrap friendly pillow.

CUTTING DIRECTIONS

*¼" seam allowances are included.
WOF means width of fabric.*

One (1) 2 ½' x 9 ½' rectangle from fabrics **A, B, C, D, E, F & G**

One (1) 1 ½' x 11' strip from fabric **B**

One (1) 2' x 11' strip from fabric **C**

One (1) 1 ¼' x 11' strip from fabric **D**

One (1) 1 ⅜' x 11' strip from fabric **E**

One (1) 1' x 11' strip from fabrics **F & A**

One (1) 1 ½' x 11' strip from fabric **G**

Seven (7) 2' x 11' strips from fabric **H**

Two (2) 2' x 18' strip from fabric **H**

Two (2) 11' x 17' rectangles from fabric **H**

CONSTRUCTION

Sew all rights sides together with ¼" seam allowance.

- Cut out the pattern piece and pin to the 2 ½' x 9 ½' rectangles from fabrics **A, B, C, D, E, F & G**. Trim the sides to match the parrallelogram pattern piece. Set the pieces aside.
- Pair each 11' strip of Observer fabric with one 11' strip of Fabric **H**. Pin right sides together and sew. Press.
- Measure up 2 ½' from the observer side of the sewn strips and trim off the excess Fabric **H** fabric. Fabrics **F/H** & **A/H** will not need trimming. All strips should measure 2 ½' x 11' after trimming.

- Turn strips so that they have Observer fabric on top and place in the order of rows.

Row 1: Fabric **B/H** strip

Row 2: Fabric **C/H** strip

Row 3: Fabric **D/H** strip

Row 4: Fabric **E/H** strip

Row 5: Fabric **F/H** strip

Row 6: Fabric **G/H** strip

Row 7: Fabric **A/H** strip

- Using the edge of the pattern piece to maintain the angle you will cut the strips in half. Measure from the left top edge of the strip and align the top corner of the pattern piece to the measurement. (Diagram 1)

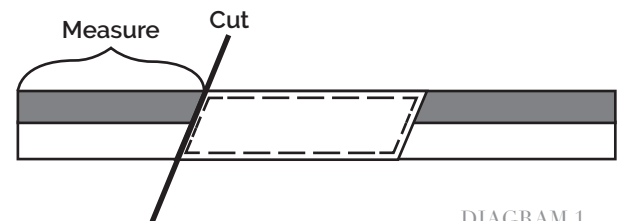


DIAGRAM 1

- Cut the rows at the following measurements and keep the pieces together:
 - Row 1: 10 ½'
 - Row 2: 8 ¾'
 - Row 3: 7'
 - Row 4: 4 ¾'
 - Row 5: 3'
 - Row 6: 4 ¼'
 - Row 7: 4 ¾'
- Pair your strip pieces with your parrallelogram pattern pieces.
 - Row 1: Fabric **B/H** strips & Fabric **A** piece
 - Row 2: Fabric **C/H** strip & Fabric **B** piece
 - Row 3: Fabric **D/H** strip & Fabric **C** piece
 - Row 4: Fabric **E/H** strip & Fabric **D** piece

Row 5: Fabric **F/H** strip & Fabric **E** piece
 Row 6: Fabric **G/H** strip & Fabric **F** piece
 Row 7: Fabric **A/H** strip & Fabric **G** piece

- Assemble the rows, pinning the strip pieces to either side of the pattern piece, right sides together. Make sure to keep the Observer fabric up top, and if this is your first time sewing diagonal seams together there should be ¼" overlap on each edge. Pin and fold back to make sure the edges are level. Sew & press.
- Sew rows together, aligning the left edges.
- Sew your 18" Fabric **H** strips to the top and bottom of the pillow top. Press pillow top.

QUILTING PILLOW

- Cut out a piece of batting 18" square.
- Place Pillow Top on top of the cotton batting with right side facing up. Smooth away wrinkles using your hands.
- Pin all layers together.
- Machine or hand quilt starting at the center and working towards the corners. Remember that quilting motifs are a matter of personal preference. Have fun choosing yours!
- After you finish, trim pillow top to be 17" square.

FINISHING PILLOW

- This pillow has an envelope style back.
- On the 11" side of one of the large Fabric **H** rectangles, press back ¼", then press another ¼" and top stitch. Repeat on the other Fabric **H** rectangle. Press.
- Lay your pillow top right side facing up and layer the back pieces on top, right sides facing down. Make sure the hemmed edges are overlapping each other and match the top and back edges together.
- Pin and sew together at ½" seam allowance.
- Flip right side out, making sure the corners are turned out nicely and stuff with your 16" pillow form.



artgalleryfabrics.com

NOTE: While all possible care has been taken to ensure the accuracy of this pattern, We are not responsible for printing errors or the way in which individual work varies. Please read instructions carefully before starting the construction of this quilt. If desired, wash and iron your fabrics before starting to cut.