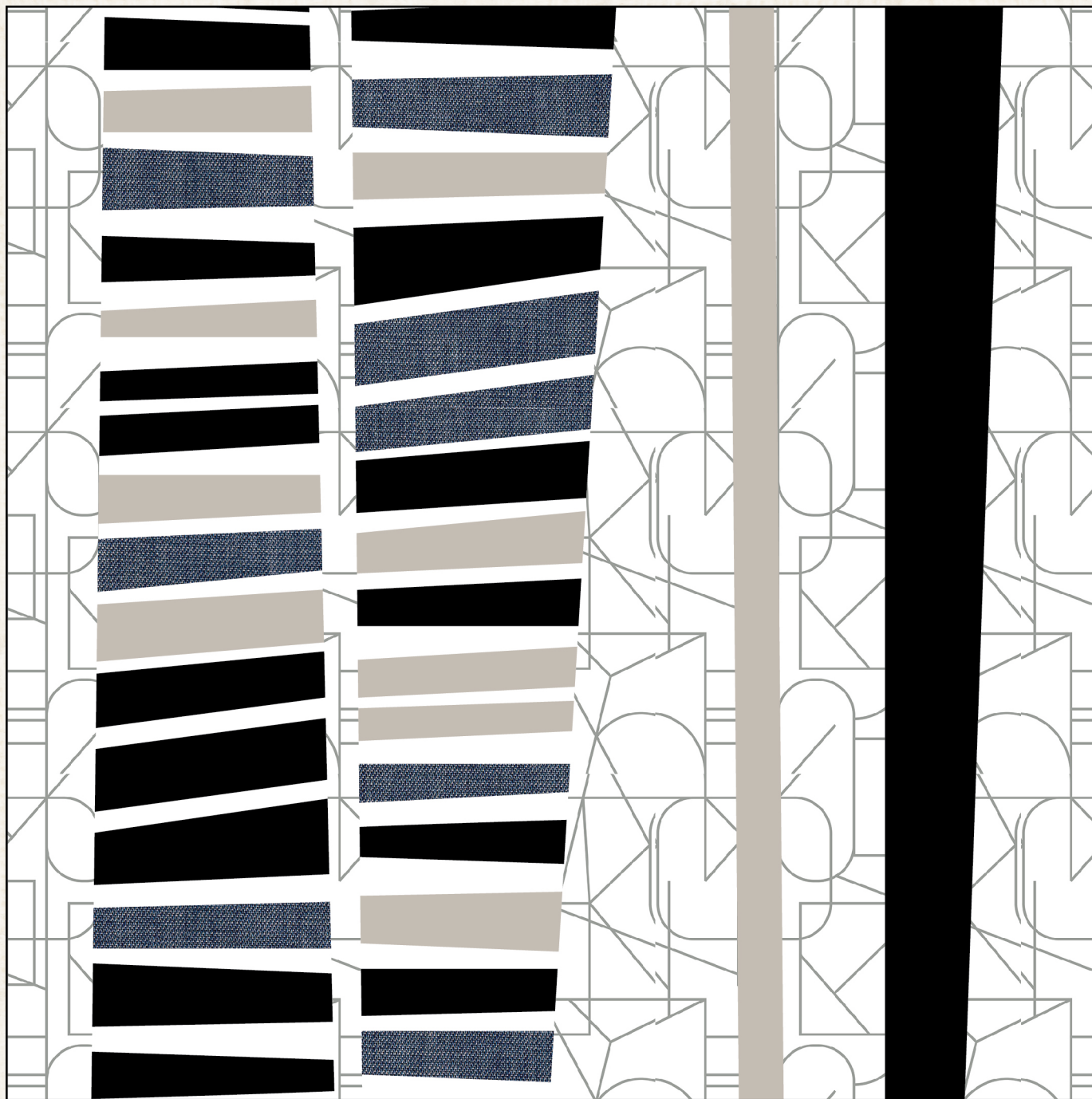


XXXXXX

PILLOW DESIGNED BY AGF STUDIO



✕ ✕ ✕ ✕ ✕ ✕ ✕ ✕ ✕ ✕ ✕ ✕ ✕ ✕ ✕ ✕ ✕ ✕ ✕ ✕





# LADDOM

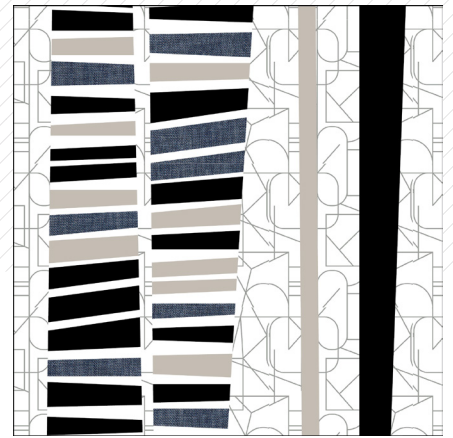
AGFstudio

PILLOW DESIGNED BY AGF STUDIO

# LAGOM

SWEDISH /"la:gɔm/ just the right amount

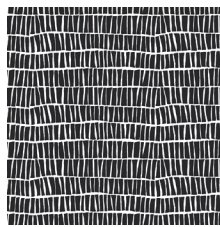
FABRICS DESIGNED BY AGF STUDIO



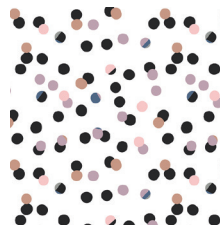
FOND



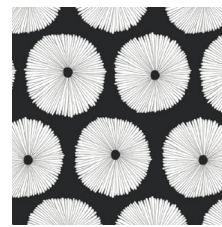
LAM-44280  
ASPHODEL DEPTH



LAM-44281  
PILED EBON



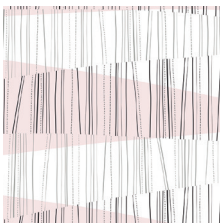
LAM-44282  
CHADS JAMBOREE



LAM-44283  
BOUANCY OPPOSED



LAM-44284  
SCATTERED SLOE



LAM-44285  
REALIGNED BLUSHED



LAM-44286  
ETERN SOOT



LAM-44287  
COLLIDE PURITY



LAM-44288  
ATTACHED CONTRAST

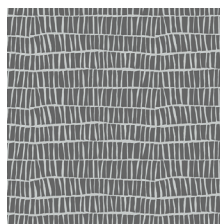


LAM-44289  
VANTAGE PANEL

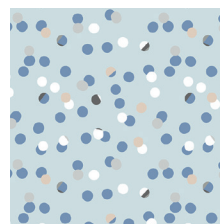
STILL



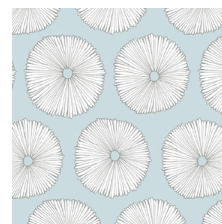
LAM-54280  
ASPHODEL TRACE



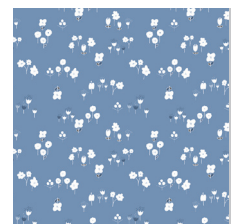
LAM-54281  
PILED SHADOW



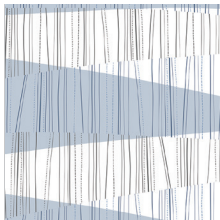
LAM-54282  
CHADS RETREAT



LAM-54283  
BOUANCY WAN



LAM-54284  
SCATTERED SKYWAY



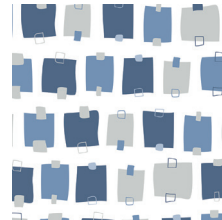
LAM-54285  
REALIGNED POWDERED



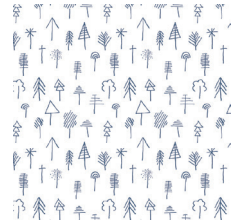
LAM-54286  
ETERN STONE



LAM-54287  
COLLIDE CINDER



LAM-54288  
ATTACHED CYANIC



LAM-54290  
STICK FOREST OUTLINED



FEEL THE DIFFERENCE © 2016 Cutting Directions/ Instrucciones de Cortar



FINISHED SIZE | 18" x 18"

## FABRIC REQUIREMENTS

Fabric <b>A</b>	LAM-44287	¼ yd.
Fabric <b>B</b>	PE-413	⅛ yd.
Fabric <b>C</b>	PE-410	⅛ yd.*
Fabric <b>D</b>	PE-433	½ yd.
Fabric <b>E</b>	DEN-S-2003	⅛ yd.*

\*Scrap friendly, check cutting directions to see if you have enough fabric.

## CUTTING DIRECTIONS

*WOF refers to Width of Fabric  
Directions include seam allowance.*

Three (3) 3' x 22' strips from fabric **A**  
One (1) 1 ½' x 22' strip from fabric **A**  
One (1) 4' x 22' strip from fabric **A**

One (1) 3' x 22' strip from fabric **B**  
Ten (10) 2' x 6' strips from fabric **B**  
Five (5) 1' x 6' strips from fabric **B**

One (1) 2' x 22' strip from fabric **C**  
Ten (10) 2' x 6' strips from fabric **C**

Thirty-two (32) 1 ½' x 6' strips from fabric **D**  
One (1) 19' x 14' rectangle from fabric **D**  
One (1) 19' x 8' rectangle from fabric **D**

Ten (10) 2' x 6' strips from fabric **E**

## CONSTRUCTION

- This is a pillow that is constructed improvisationally in part, with strips sewn together at different angles. For this reason strips are longer than needed, to compensate for sewing at angles. We will cut the pillow to size after sewing.

### Part 1: Horizontal Strip Sequences

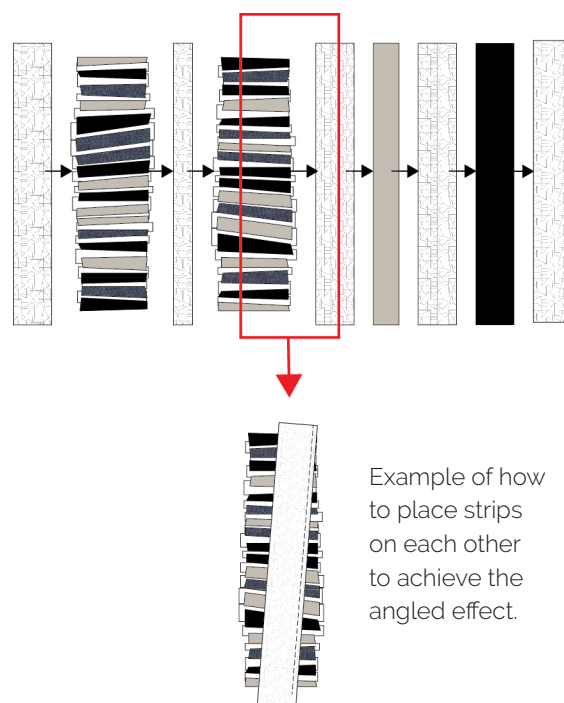
- Gather all your 6" long strips and arrange them into two sets.
- Fabric should alternate between your choice of denim, black or gray and white strips.
- Sew the strips at angles to each other, and at different seam allowances to make them different sizes. The more variety the more visual interest.
- Keep sewing until you have two strip sets approximately 20" long. Trim all seam allowances to ¼" and press.

### Part 2: Vertical Strip Construction

- Arrange your 22" strips & strip sets in order:

3" fabric **A** -> strip set -> 1 ½" fabric **A** -> strip set -> 3" fabric **A** -> 2" fabric **C** -> 3" fabric **A** -> 3" fabric **B**  
(Diagram 1)

- Note that there is extra fabric in the length and width of strips to accommodate sewing at angles, and tops and bottoms that may differ in width by as much as 1 ½". Do not sew the strips together at precisely ¼", vary your angles and seam allowances to create strips that are not perfectly vertical. You can refer to the illustration for inspiration if you prefer. (Diagram 1)
- After sewing, trim all seams to ¼" with your rotary cutter and press.
- Trim the pillow top to a 19" square.



Example of how to place strips on each other to achieve the angled effect.

DIAGRAM 1

### Quilting the Pillow Top

- Place your pillow top onto a square of batting slightly larger than your 19" square pillow top.
- Choose a your quilting motif, this is a matter of personal preference.
- After quilting trim block to 19" square.

## PILLOW ASSEMBLY

*Sew rights sides together at 1/2" seam allowance.*

- Take your fabric **D** rectangles and on one 19" side each press under 1/4" and then again another 1/2".
- Edge stitch close to the fold & press to set stitches.
- Now, with right sides together, line up the raw 19" edges of the rectangles to the sides of the pillow top. The finished edges of the rectangles will overlap, creating an envelope pillow back.
- Sew around the edge of the pillow at 1/2". Finish the edges with an overcast stitch for reinforcement.
- Turn your pillow inside out, using a chopstick to help you pop out the corners.
- Press.
- Voila! You are ready to stuff with your pillow form!



[artgalleryfabrics.com](http://artgalleryfabrics.com)

NOTE: While all possible care has been taken to ensure the accuracy of this pattern, We are not responsible for printing errors or the way in which individual work varies. Please read instructions carefully before starting the construction of this quilt. If desired, wash and iron your fabrics before starting to cut.

© 2016 Courtesy of Art Gallery Quilts LLC. All Rights Reserved.