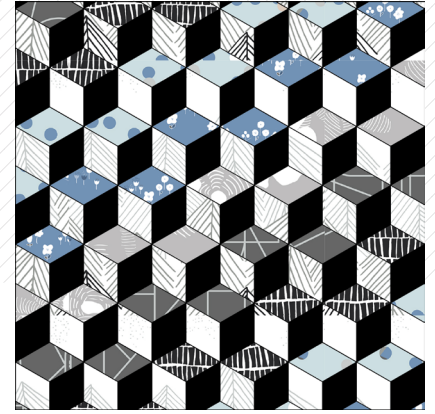




# INTERLINK

AGFstudio

PILLOW DESIGNED BY AGF STUDIO



# LAGOM

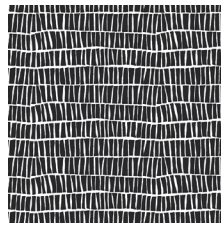
SWEDISH /'la:gom/ just the right amount

FABRICS DESIGNED BY AGF STUDIO

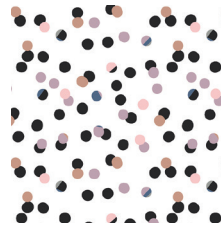
FOND



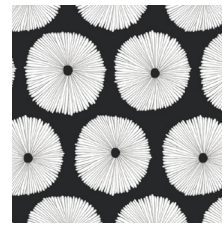
LAM-44280  
ASPHODEL DEPTH



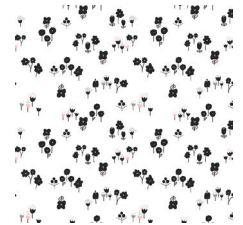
LAM-44281  
PILED EBON



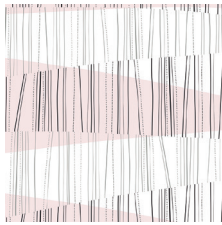
LAM-44282  
CHADS JAMBOREE



LAM-44283  
BUOYANCY OPPOSED



LAM-44284  
SCATTERED SLOE



LAM-44285  
REALIGNED BLUSHED



LAM-44286  
ETERN SOOT



LAM-44287  
COLLIDE PURITY



LAM-44288  
ATTACHED CONTRAST

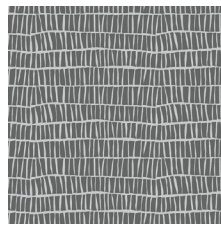


LAM-44289  
VANTAGE PANEL

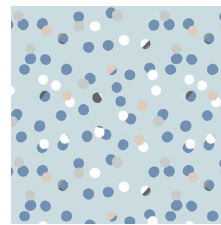
STILL



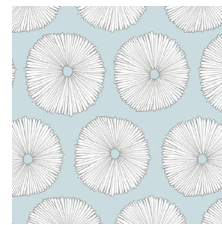
LAM-54280  
ASPHODEL TRACE



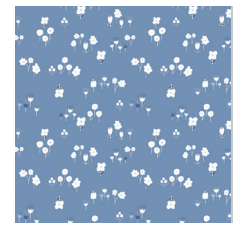
LAM-54281  
PILED SHADOW



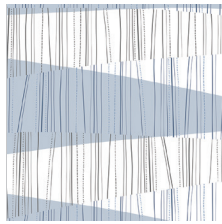
LAM-54282  
CHADS RETREAT



LAM-54283  
BOUYANCY WAN



LAM-54284  
SCATTERED SKYWAY



LAM-54285  
REALIGNED POWDERED



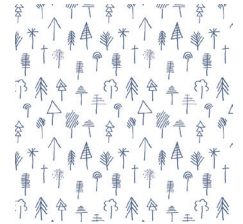
LAM-54286  
ETERN STONE



LAM-54287  
COLLIDE CINDER



LAM-54288  
ATTACHED CYANIC



LAM-54290  
STICK FOREST OUTLINED



# INTERLINK

FINISHED SIZE | 12' x 12'

## FABRIC REQUIREMENTS

Fabric <b>A</b>	PE-413	1/3 yd.
Fabric <b>B</b>	LAM-44289	1/8 yd.
Fabric <b>C</b>	LAM-54287	1/8 yd.
Fabric <b>D</b>	LAM-54280	1/8 yd.
Fabric <b>E</b>	LAM-54281	1/2 yd.
Fabric <b>F</b>	LAM-54284	1/8 yd.
Fabric <b>G</b>	LAM-54282	1/8 yd.
Fabric <b>H</b>	LAM-44281	1/2 yd.
Fusible Interfacing		14" x 14"
Cotton Batting		14" x 14"

## CUTTING DIRECTIONS

*WOF refers to Width of Fabric  
Do not cut strips on the bias.*

Fourteen (14) 2' x 18" strips from fabric **A**

Two (2) 13' x 9" rectangles from fabric **A**

Ten (10) 2' x WOF strips from fabric **B**

One (1) 2' x WOF strip from fabric **C**

One (1) 2' x WOF strip from fabric **D**

One (1) 2' x WOF strip from fabric **E**

One (1) 2' x WOF strip from fabric **F**

One (1) 2' x WOF strip from fabric **G**

One (1) 2' x WOF strip from fabric **H**

## CONSTRUCTION

- First we will prepare all the 2" strips for weaving.
- Using a 1" bias tape maker press all the strips so they are like 1" single fold bias tape (except our strips were not cut on the bias since we don't want that stretchiness for this project.)

- Prepare your weaving surface. You can use a piece of cardboard or a foam board as a weaving surface. Thicker is better so you don't have to worry about pins poking through, but you can layer several pieces of cardboard or foamboard to protect yourself (and your table) from scratches.
- You may find it helpful to draw a 14" square with vertical lines 1" apart, along with 30° angle marks extending from each bottom corner.
- If you are unfamiliar with the "mad-weave" or "triaxial" weave, or with weaving in general it may be helpful to view this video tutorial, called *Tumbling Blocks Madweave* by T. Jaye:

<https://www.youtube.com/watch?v=6xlUirFs0Kg>

### Part 1

- Place your 14" square of fusible interfacing glue side up on your weaving surface.
- Pin all 14 fabric **A** strips vertically onto your board, making sure the interfacing is still in place at the end.

### Part 2

- Next you will weave in the fabric **B** strips starting from the lower right corner at a 30° angle.
- If you don't have a flat weaving tool to help with weaving chopsticks are handy to lift the strips and push the strip through.
- Your first strip will go 1 over, then 2 under, continuing this pattern until the end and then cut the strip after pinning down.
- Double-check with your ruler to make sure your first woven strip is at a 30° angle since this will be the guide strip for all future strips in part 2.
- Your second strip will start 1 under, 1 over, then the regular 2 under, 1 over until the end.
- Your third strip will start 2 under, 1 over, and continuing the pattern until the end.
- Continue repeating this 3-strip pattern until the entire 14" square space is covered.
- See Diagram 1.

