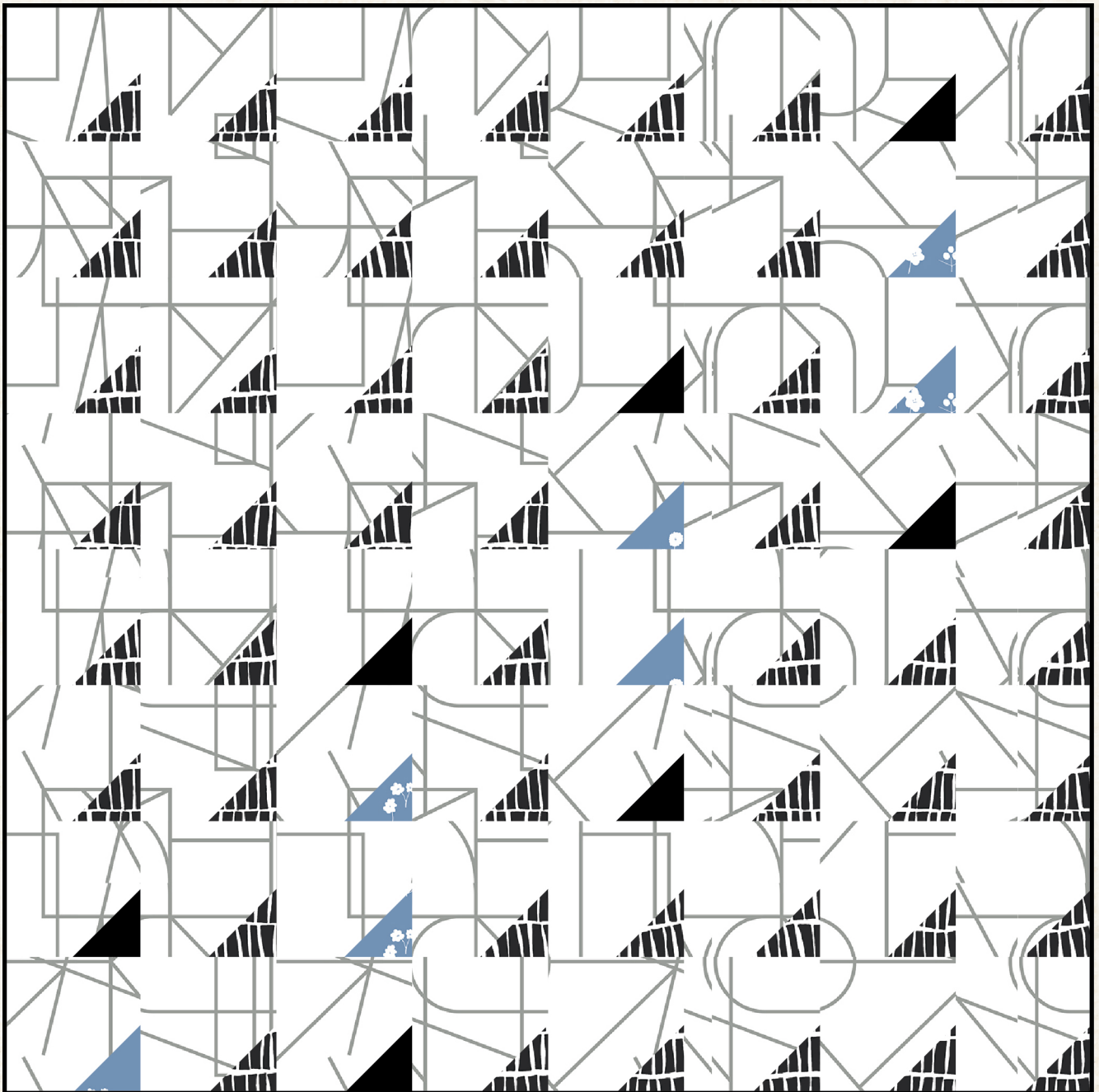


featuring LAGOM COLLECTION BY AGF STUDIO

FLEXURE

PILLOW DESIGNED BY AGF STUDIO



FREE PATTERN

XXXXXXXXXXXXXXXXXXXXXXXXXXXX



FLEXURE

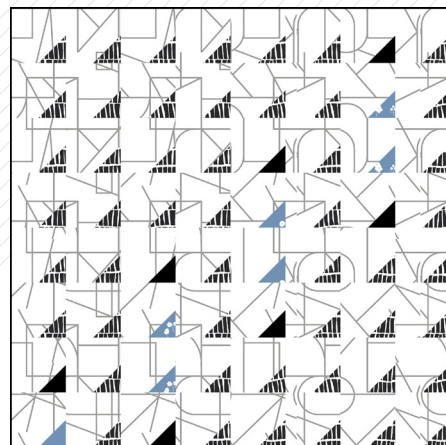
AGFstudio

PILLOW DESIGNED BY AGF STUDIO

LAGOM

SWEDISH /"la:gom/" just the right amount

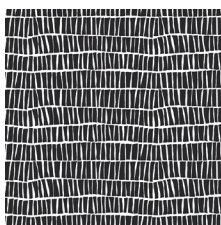
FABRICS DESIGNED BY AGF STUDIO



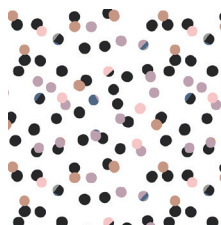
FOND



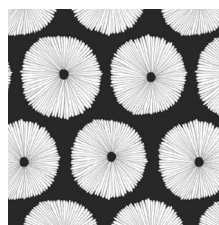
LAM-44280
ASPHODEL DEPTH



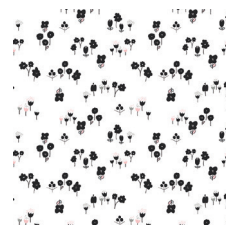
LAM-44281
PILED EBON



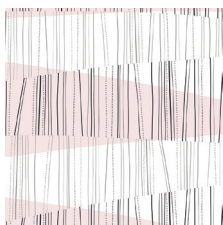
LAM-44282
CHADS JAMBOREE



LAM-44283
BOUANCY OPPOSED



LAM-44284
SCATTERED SLOE



LAM-44285
REALIGNED BLUSHED



LAM-44286
ETERN SOOT



LAM-44287
COLLIDE PURITY



LAM-44288
ATTACHED CONTRAST

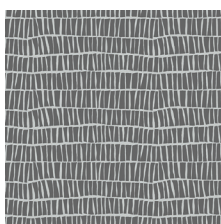


LAM-44289
VANTAGE PANEL

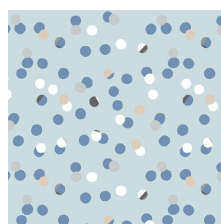
STILL



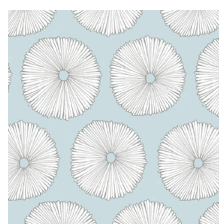
LAM-54280
ASPHODEL TRACE



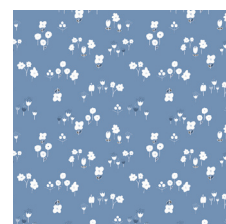
LAM-54281
PILED SHADOW



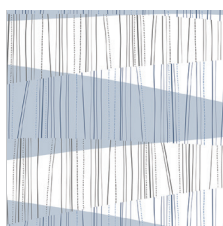
LAM-54282
CHADS RETREAT



LAM-54283
BOUANCY WAN



LAM-54284
SCATTERED SKYWAY



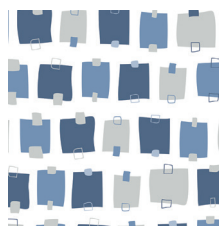
LAM-54285
REALIGNED POWDERED



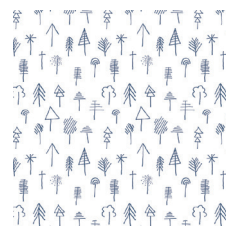
LAM-54286
ETERN STONE



LAM-54287
COLLIDE CINDER



LAM-54288
ATTACHED CYANIC



LAM-54290
STICK FOREST OUTLINED



FEEL THE DIFFERENCE © 2016 Cutting Directions/ Instrucciones de Cortar

FLEXURE

FINISHED SIZE | 16" x 16"

FABRIC REQUIREMENTS

Fabric A	LAM-44287	⅓ yd.
Fabric B	LAM-44281	⅓ yd.
Fabric C	LAM-54284	⅓ yd.*
Fabric D	PE-413	⅓ yd.*
Fabric E	PE-433	FQ or ½ yd.

* Scrap friendly, check cutting directions for quantities.

** FQ: Fat Quarter piece of fabric

CUTTING DIRECTIONS

¼" seam allowances are included.

Sixty-four (64) 2 ½" squares from fabric A

Fifty (50) 1 ½" squares from fabric B

Seven (7) 1 ½" squares from fabric C

Seven (7) 1 ½" squares from fabric D

One (1) 16 ½" x 14" rectangle from fabric E

One (1) 16 ½" x 7" rectangle from fabric E

CONSTRUCTION

Sew all rights sides together with ¼" seam allowance.

- We will be making 64 little blocks with snowball corners.
- Place the small squares (fabric B, C, D) on the larger squares (fabric A) right sides together, matching the lower right corners.
- Mark the diagonal and sew.
- Trim the seam as shown to a ¼" seam.
- Press the triangle out to form the finished corner.

(DIAGRAM 1)

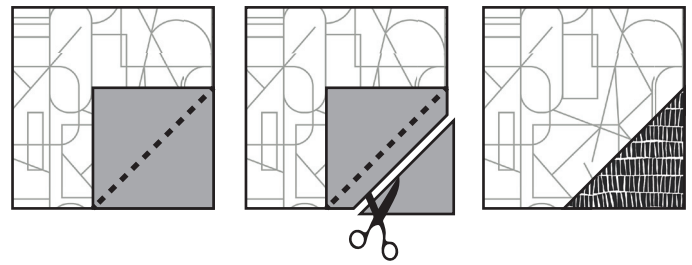


DIAGRAM 1

- Following the Diagram below, arrange your blocks into rows and sew together.
- Sew your rows together.

Row 1



Row 2



Row 3



Row 4



Row 5



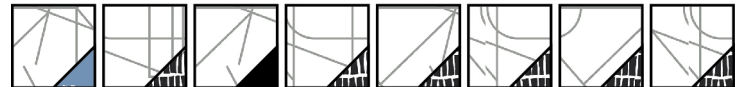
Row 6



Row 7



Row 8



(DIAGRAM 2)

QUILTING THE TOP

- Cut a piece of batting 17" square and smooth your sewn pillow top over it, pin in place.
- Quilt your pillow top according to your desired quilt motif.
- Trim to 16 ½" square.

PILLOW ASSEMBLY

Sew rights sides together.

- Take your fabric **E** rectangles and on one 16 ½" side each press under ¼" and then again another ½".
- Edge stitch close to the fold & press to set stitches.
- Now, with right sides together line up the raw 16 ½" edges of the rectangles to the sides of the pillow top. The finished edges of the rectangles will overlap, creating the envelope pillow back.
- Sew around the edge of the pillow at ¼". Finish the edges with an overcast stitch for reinforcement.
- Turn your pillow inside out, using a chopstick to help you pop out the corners.
- Press.
- Voila! You are ready to stuff with your pillow form!



artgalleryfabrics.com

NOTE: While all possible care has been taken to ensure the accuracy of this pattern, We are not responsible for printing errors or the way in which individual work varies. Please read instructions carefully before starting the construction of this quilt. If desired, wash and iron your fabrics before starting to cut.

© 2016 Courtesy of Art Gallery Quilts LLC. All Rights Reserved.

