

XXXXXX

PILLOW DESIGNED BY AGF STUDIO



× × × × × × × × × × × × × × × × × × × ×



Asphodel

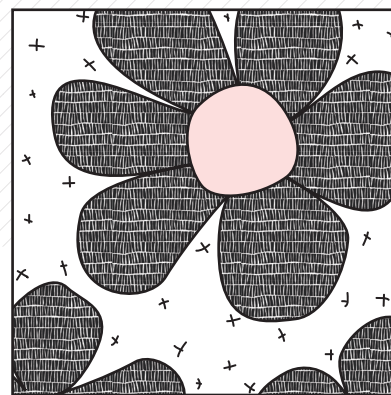
AGFstudio

PILLOW DESIGNED BY AGF STUDIO

LAGOM

SWEDISH /'la:gɒm/ just the right amount

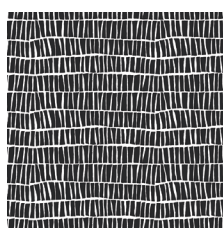
FABRICS DESIGNED BY AGF STUDIO



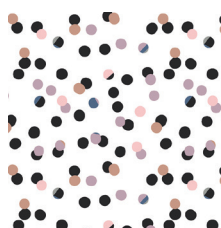
FOND



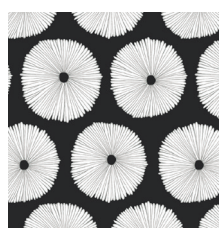
LAM-44280
ASPHODEL DEPTH



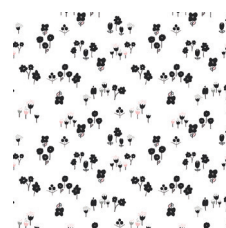
LAM-44281
PILED EBON



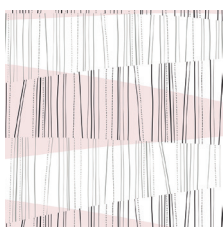
LAM-44282
CHADS JAMBOREE



LAM-44283
BUOYANCY OPPOSED



LAM-44284
SCATTERED SLOE



LAM-44285
REALIGNED BLUSHED



LAM-44286
ETERN SOOT



LAM-44287
COLLIDE PURITY



LAM-44288
ATTACHED CONTRAST

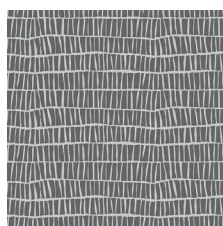


LAM-44289
VANTAGE PANEL

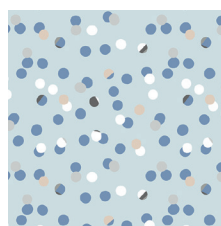
STILL



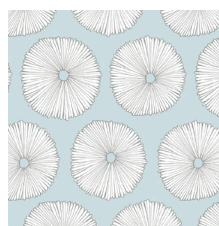
LAM-54280
ASPHODEL TRACE



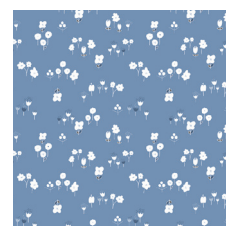
LAM-54281
PILED SHADOW



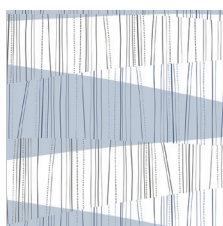
LAM-54282
CHADS RETREAT



LAM-54283
BOUYANCY WAN



LAM-54284
SCATTERED SKYWAY



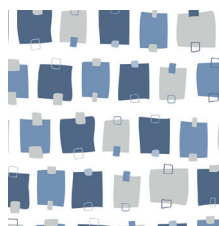
LAM-54285
REALIGNED POWDERED



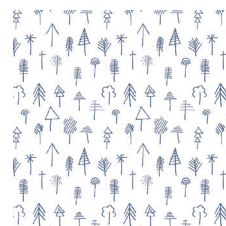
LAM-54286
ETERN STONE



LAM-54287
COLLIDE CINDER



LAM-54288
ATTACHED CYANIC



LAM-54290
STICK FOREST OUTLINED



FEEL THE DIFFERENCE © 2016 Cutting Directions/ Instrucciones de Cortar

Asphodel

FINISHED SIZE | 20" x 20"

FABRIC REQUIREMENTS

Fabric A	LAM-44281	½ yd.
Fabric B	PE-420	¼ yd.
Fabric C	PE-433	1 ¼ yd.

Other Materials:

Hi-loft batting (preferred)
Black embroidery floss

CUTTING DIRECTIONS

Prepare Patterns:

Find the pattern pieces at the end of these instructions and tape them together, matching the letters & numbers. Cut out pattern pieces.

Cut Flower 1 from fabric **A & Batting**

Cut Flower 2 from fabric **A & Batting**

Cut Flower 3 from fabric **A & Batting**

Cut Flower Center from fabric **B & Batting**

Two (2) 22" x 22" rectangles from fabric **C**

One (1) 21" x 16" rectangle from fabric **C**

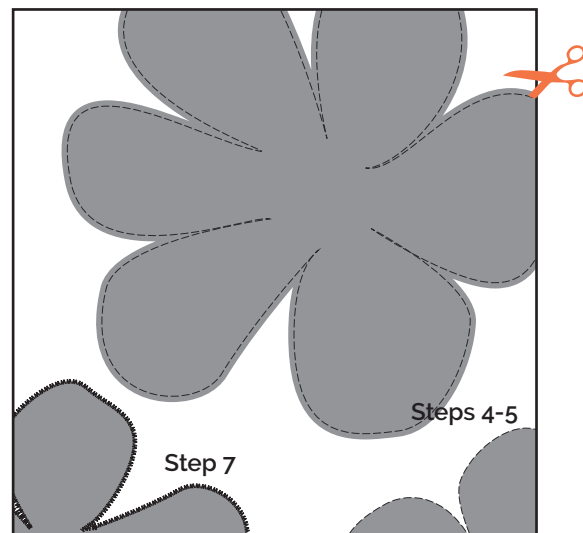
One (1) 21" x 10" rectangle from fabric **C**

One (1) 22" x 22" rectangle from **Batting**

CONSTRUCTION

1. Make a quiltly sandwich: Layer the 22" square batting piece between the 22" square fabric pieces. Baste or pin together.
2. Match up the fabric pattern pieces with their corresponding batting pieces. Pin together. Double check that you transferred the sewing line onto the fabric, or just refer visually to the sewing line when sewing if you prefer not to transfer.
3. Arrange the flower petals onto the 22" square top, right sides up, matching the raw edges.
4. Sew along your marked sewing lines with a long straight stitch. (Approx. ½" away from raw edge.)

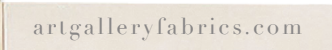
5. Now carefully trim away the excess fabric and batting with a sharp pair of little scissors. Cut with fabric laid out on a flat surface so as not to accidentally cut the white fabric background.
6. Thread your machine with black thread and set it to a satin stitch (a very tight zig-zag stitch). You may want to practice on a scrap version of the puffy flowers to work out any possible issues with stitch and tension settings before starting.
7. Cover the raw edges and stitching of flowers with your black satin stitch.
8. Match the flower center with batting piece and pin to the center of the flower.
9. Sew on stitching line with straight stitch, trim & sew edges with a black satin stitch.
10. With a disappearing marker mark on the white background where you will place your embroidery crosses.
11. Thread an embroidery needle with black embroidery thread and sew simple crosses measuring approximately ¾" - ½".
12. Trim the pillow top to a 21" square.

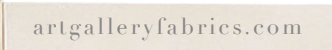


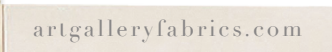
PILLOW ASSEMBLY

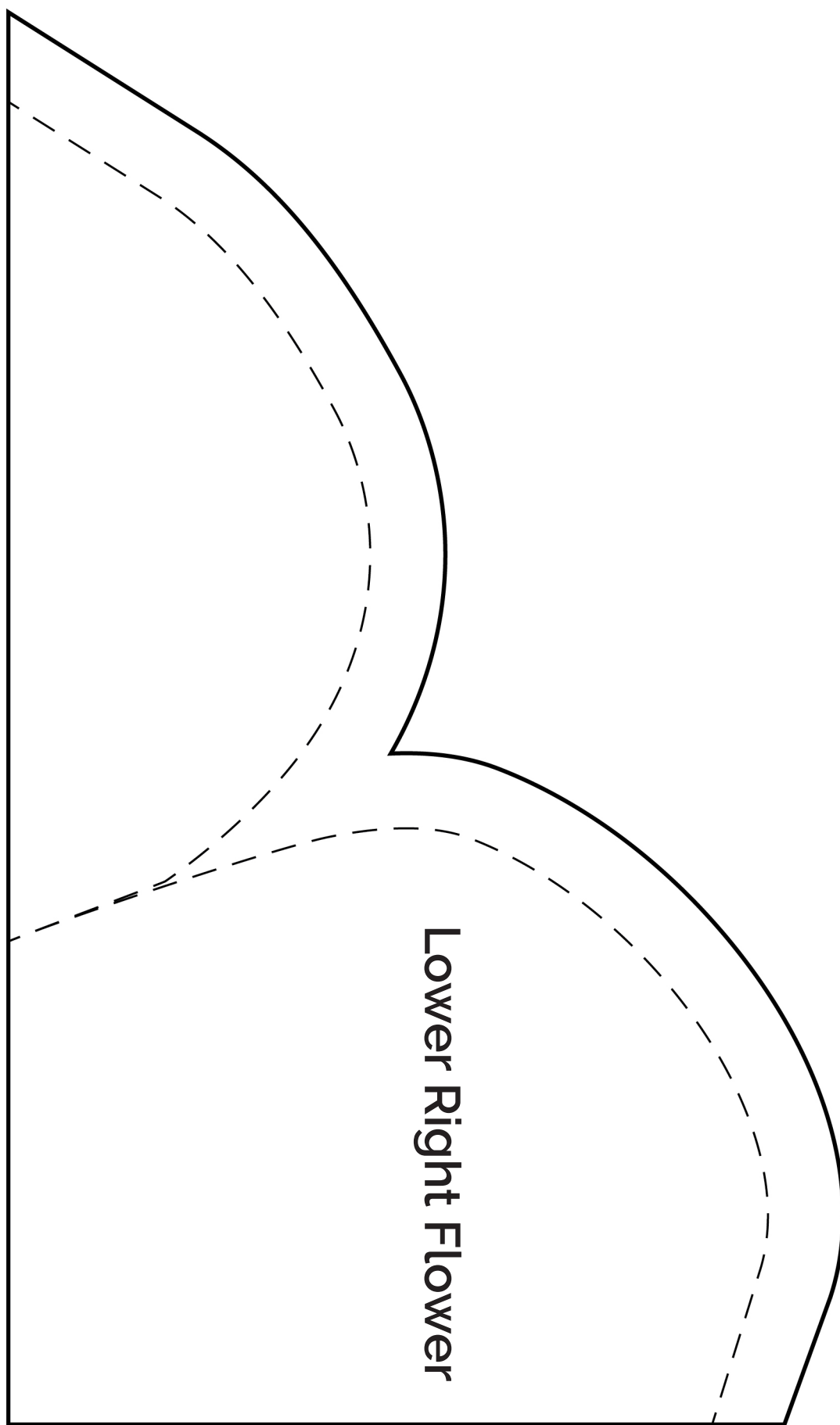
Sew rights sides together at ½" seam allowance.

- Take your fabric **C** rectangles and on one 21" side each press under ¼" and then again another ½".
- Edge stitch close to the fold & press to set stitches.
- Now, with right sides together, line up the raw 21" edges of the rectangles to the sides of the pillow top. The finished edges of the rectangles will overlap, creating an envelope pillow back.
- Sew around the edge of the pillow at ½". Finish the edges with an overcast stitch for reinforcement.
- Turn your pillow inside out, using a chopstick to help you pop out the corners, press & Voila!









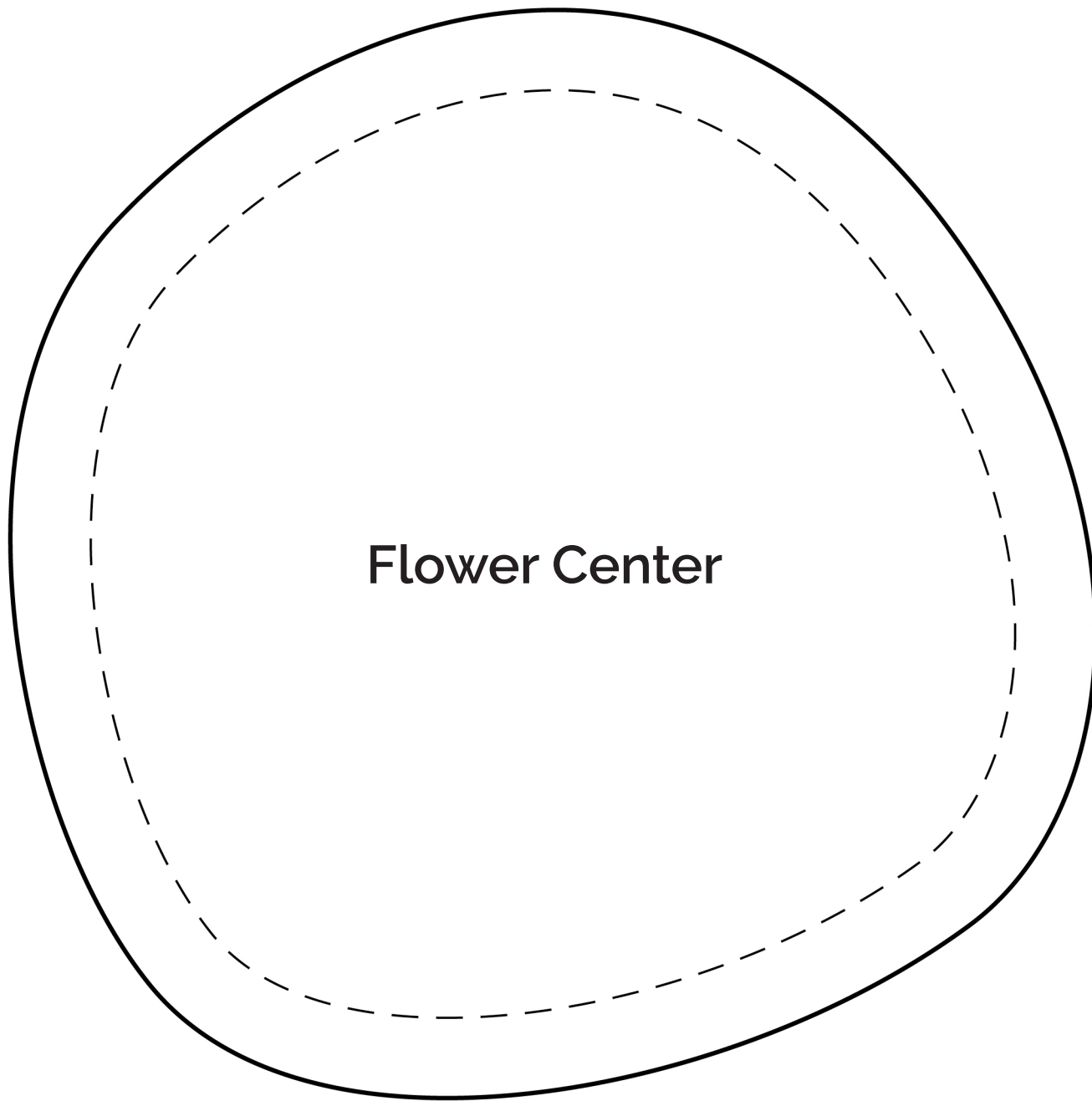












Flower Center



NOTE: While all possible care has been taken to ensure the accuracy of this pattern, We are not responsible for printing errors or the way in which individual work varies. Please read instructions carefully before starting the construction of this quilt. If desired, wash and iron your fabrics before starting to cut.

artgalleryfabrics.com

© 2016 Courtesy of Art Gallery Quilts LLC. All Rights Reserved.