

XXXXXX

## A close-up view of a quilted bedspread with a complex geometric pattern. The quilt is composed of various rectangular and triangular patches in shades of blue, white, and grey, some with subtle patterns like dots or stripes. A white rectangular tray with a handle is placed on the quilt, holding a black and white polka-dot mug. In the background, a bed with grey pillows and a black bedside table with a white lamp is visible.

XXXXXXXXXXXXXXXXXXXX





# ALIGN *AGFstudio*

BED RUNNER DESIGNED BY AGF STUDIO

## LAGOM

SWEDISH /'la:gɒm/ just the right amount

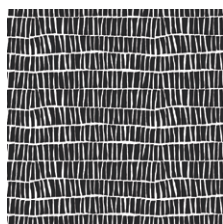
FINISHED SIZE | 32' x 80'

FABRICS DESIGNED BY AGF STUDIO

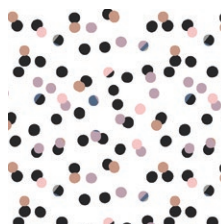
FOND



LAM-44280  
ASPHODEL DEPTH



LAM-44281  
PILED EBON



LAM-44282  
CHADS JAMBOREE



LAM-44283  
BUOYANCY OPPOSED



LAM-44284  
SCATTERED SLOE



LAM-44285  
REALIGNED BLUSHED



LAM-44286  
ETERN SOOT



LAM-44287  
COLLIDE PURITY



LAM-44288  
ATTACHED CONTRAST

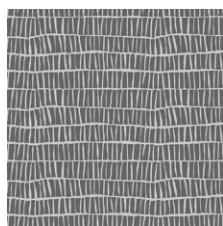


LAM-44289  
VANTAGE PANEL

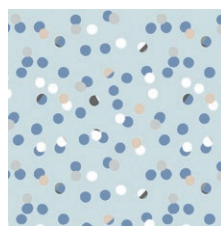
STILL



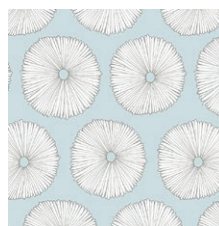
LAM-54280  
ASPHODEL TRACE



LAM-54281  
PILED SHADOW



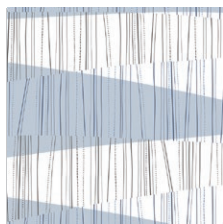
LAM-54282  
CHADS RETREAT



LAM-54283  
BUOYANCY WAN



LAM-54284  
SCATTERED SKYWAY



LAM-54285  
REALIGNED POWDERED



LAM-54286  
ETERN STONE



LAM-54287  
COLLIDE CINDER



LAM-54288  
ATTACHED CYANIC



LAM-54290  
STICK FOREST OUTLINED



DEN-S-2004  
INFUSED HYDRANGEA



PE-434  
TRANQUIL WATERS



PE-436  
CREME DE LA CREME



PE-410  
ASH



PE-433  
SNOW





## FABRIC REQUIREMENTS

Fabric A	LAM-54282	5/8 yd.
Fabric B	LAM-54281	5/8 yd.
Fabric C	LAM-54284	1 FQ.
Fabric D	LAM-54286	1 FQ.
Fabric E	LAM-54280	1 FQ.
Fabric F	LAM-54287	1 FQ.
Fabric G	LAM-44281	1 FQ.
Fabric H	LAM-54285	1 FQ.
Fabric I	DEN-S-2004	1 FQ.
Fabric J	PE-434	1 FQ.
Fabric K	PE-436	1 FQ.
Fabric L	PE-410	1 FQ.
Fabric M	PE-433	1 1/8 yd.

### BACKING FABRIC

LAM-54283- 2 5/8 yds. (Suggested)

### BINDING FABRIC

LAM-44286- 3/8 yd.

## CUTTING DIRECTIONS

Read through all instructions before beginning 1/4" seam allowances are included. WOF means width of fabric.

- Six (6) 8 7/8" squares from Fabric A and B
- Four (4) 8 7/8" squares from Fabric E and F
- Three (3) 4 1/2" x 8 1/2" strips from Fabric C,D,J and K
- Two (2) 4 1/2" x 8 1/2" strips from Fabric G,H,I and L
- Three (3) 4 1/2" squares from Fabric C,D,J and K
- Two (2) 4 1/2" squares from Fabric G,H,I and L
- Five (5) 8 1/2" squares from Fabric M
- Forty (40) 4" squares from Fabric M (draw diagonal lines on wrong side of fabric)

## Half Square Triangle Construction

Sew all rights sides together with 1/4" seam allowance.

- To create two half square triangles with Fabric A and Fabric B, take 8 7/8" x 8 7/8" squares from both fabrics. (DIAGRAM 1)

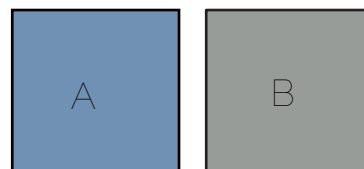


DIAGRAM 1

- Place on top with right sides together! Draw a diagonal line from one corner to the other.
- Sew on each side of the line you drew at 1/4". (DIAGRAM 2)

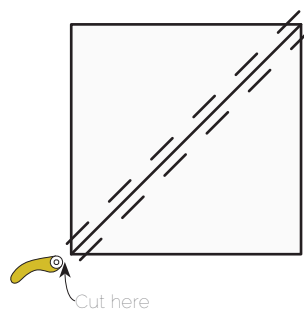


DIAGRAM 2

- Cut on your diagonal line. Press seams open (DIAGRAM 3)

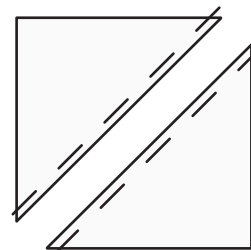


DIAGRAM 3





## ASSEMBLING THE TOP

*Sew all rights sides together with ¼" seam allowance. Press open.*

- Follow cover page as a guide making to rows alternating blocks with 5 blocks in each row.
- Sew rows together mathing up seams.

## QUILT ASSEMBLY

*Sew rights sides together.*

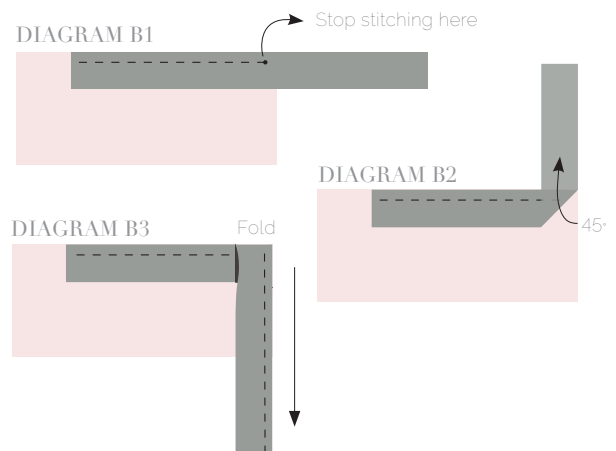
- Place BACKING FABRIC on a large surface wrong side up. Stretch it with masking tape against that surface.
- Place BATTING on top of backing fabric.
- Place TOP on top of the batting with right side facing up. Smooth away wrinkles using your hands.
- Pin all layers together and baste with basting thread, using long stitches. You can also use safety pins to join the layers.
- Machine or hand quilt starting at the center and working towards the corners. Remember that quilting motifs are a matter of personal preference. Have fun choosing yours!
- After you finished, trim excess of any fabric or batting, squaring the quilt to proceed to bind it.

## BINDING

*Sew rights sides together.*

- Cut enough strips 1½" wide by the width of the fabric **LAM-44286** to make a final strip 234" long. Start sewing the binding strip in the middle of one of the sides of the quilt, placing the strip right side down and leaving an approximated 5" tail. Sew with ¼" seam allowance (using straight stitch), aligning the strip's raw edge with the quilt top's raw edge.
- Stop stitching ¼" before the edge of the quilt (**DIAGRAM B 1**). Clip the threads. Remove the quilt from under the machine presser foot. Fold the strip in a motion of 45° and upward, pressing with your fingers (**DIAGRAM B2**). Hold this fold with your finger, bring the strip down in line with the next edge, making a horizontal fold that aligns with the top edge of the quilt (**DIAGRAM B3**). Start sewing at ¼" of the border, stitching all the layers. Do the same in the four corners of the quilt.

- Stop stitching before you reach the last 5 or 6 inches. Cut the threads and remove the quilt from under the machine presser foot. Lay the loose ends of the binding flat along the quilt edge, folding the ends back on themselves where they meet. Press them together to form a crease. Using this crease as the stitching line, sew the two open ends of the binding with right sides together (you can help yourself marking with a pencil if the crease is difficult to see).
- Trim seam to ¼" and press open. Complete the sewing. Turn binding to back of the quilt, turn raw edge inside and stitch by hand using blind stitch.



[artgalleryfabrics.com](http://artgalleryfabrics.com)

*NOTE: While all possible care has been taken to ensure the accuracy of this pattern, We are not responsible for printing errors or the way in which individual work varies. Please read instructions carefully before starting the construction of this quilt. If desired, wash and iron your fabrics before starting to cut.*