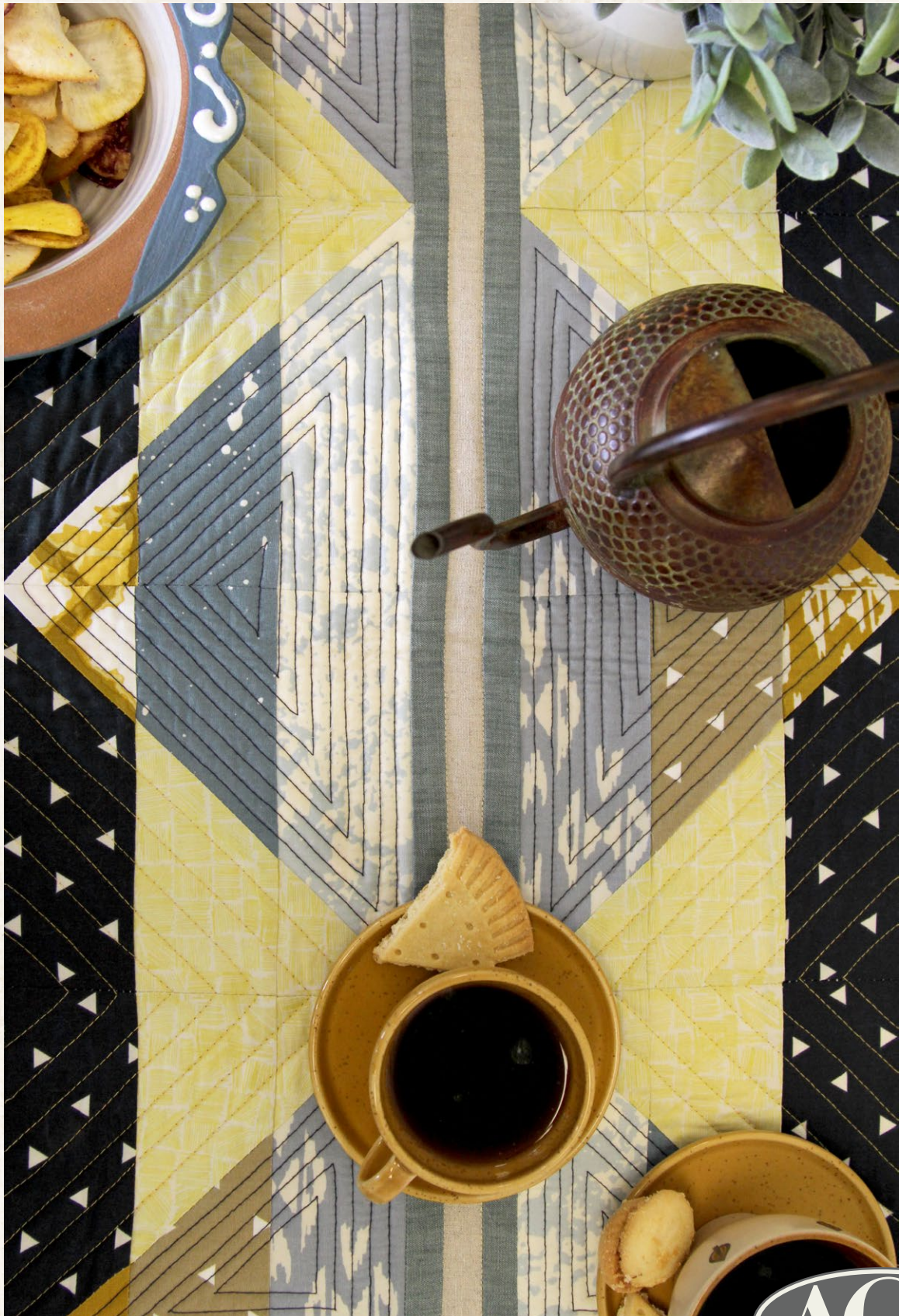


REVEAL



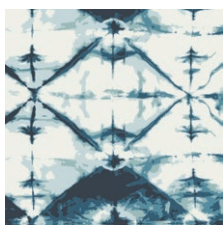
REVEAL

TABLERUNNER DESIGNED BY AGF *studio*

✿ OBSERVER ✿

FABRICS DESIGNED BY april▲rhodes

SHARD



OBR-49800
INDIGO WINDOW CRYSTAL



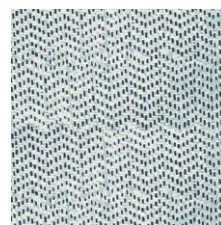
OBR-49801
AERIAL VIEW WHISPER



OBR-49802
OVERSHOT HAZE



OBR-49803
TRIANGLE TOKENS INK



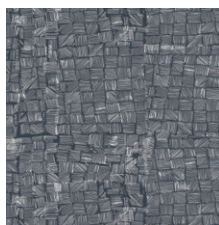
OBR-49804
TREADLE TRADITION



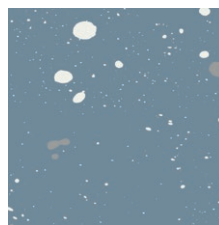
OBR-49805
HOMESPUN PRAXIS



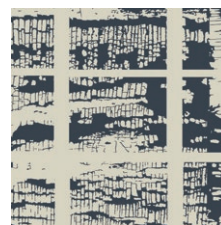
OBR-49806
STONE WASH CLOUDY



OBR-49807
MESH WITH ME MOM

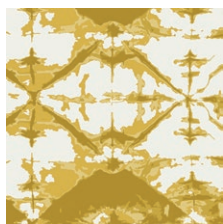


OBR-49808
SPECK STARDUST

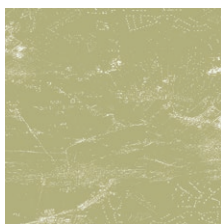


OBR-49809
CHIPPING AWAY DEPTH

PARTICLE



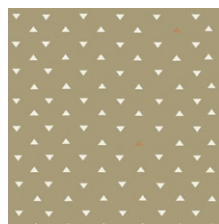
OBR-59800
INDIGO WINDOW SULPHUR



OBR-59801
AERIAL VIEW SAGE



OBR-59802
OVERSHOT GOLD



OBR-59803
TRIANGLE TOKENS HOME



OBR-59804
TREADLE LACE



OBR-59805
HOMESPUN WILLOW



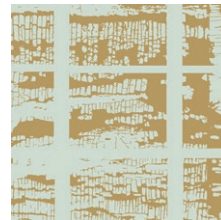
OBR-59806
STONE WASH GLAZE



OBR-59807
MESH WITH ME OLIVE



OBR-59808
SPECK BRONZE



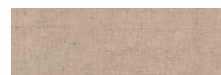
OBR-59809
CHIPPING AWAY MICA



DEN-S-2003
AFTERNOON SAIL



DEN-S-2002
COOL FOLIAGE



DEN-L-4000
SOFT SAND



FINISHED SIZE | 16' x 50'

FABRIC REQUIREMENTS

Fabric A	OBR-49803	¼ yd.
Fabric B	OBR-59807	¼ yd.
Fabric C	OBR-59802	⅓ yd.
Fabric D	OBR-59803	⅓ yd.
Fabric E	OBR-49802	⅓ yd.
Fabric F	OBR-49806	⅓ yd.
Fabric G	OBR-49808	⅓ yd.
Fabric H	OBR-59800	⅓ yd.
Fabric I	DEN-S-2002	⅓ yd.
Fabric J	DEN-L-4000	⅓ yd.
Fabric K	DEN-S-2003	⅓ yd.

BACKING FABRIC

OBR-49809 - 1 yd. *(Suggested)*

BINDING FABRIC

OBR-49809- 1/4 yd.

Two (2) 1" x WOF strip from Fabric I

One (1) 1" x WOF strip from Fabric J

Four (4) 1 1/2" x 8 1/2" strips from Fabric K

Two (2) 1 1/2" x WOF strips from Fabric K

CONSTRUCTION

Sew all rights sides together with ¼" seam allowance.

- To make the block to create this tablerunner
Take a 2 1/2" square from Fabric C and place at the end of a 2 1/2" x 6 1/2" strip from Fabric A and sew at the diagonal. Press and trim seam allowance to 1/4". (Diagram 1)



DIAGRAM 1

CUTTING DIRECTIONS

¼" seam allowances are included.
WOF means width of fabric.

Sixteen (16) 2 1/2" x 6 1/2" strips from Fabric A

Sixteen (16) 2 1/2" x 4 1/2" strips from Fabric B

Sixteen (16) 2 1/2" squares from Fabric B

Eight (8) 2 1/2" x 4 1/2" strips from Fabric D and G

Eight (8) 2 1/2" x 2 1/2" x 6 1/2" from Fabric E and F

Eight (8) 2 1/2" squares from Fabric C and H

- Take a 2 1/2" x 4 1/2" strip from Fabric B and D
place ends right side together following Diagram 2 and stitch at the diagonal.
- Press and trim seam allowance to 1/4".
(Diagram 2)



- Sew blocks together to get four units that look like Diagram 5 and four that look like Diagram 6.

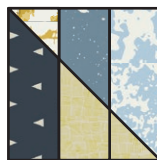
-

- Sew units into two rows that look like Diagram 7. Take two 1" x WOF strips from Fabric **I** and sew to each side of your two rows.
- Trim off excess. Next sew two 1 1/2" x WOF from Fabric **K** to each side of the strip following Diagram 7. Trim off excess. Now sew to the top and bottom of your columns a 1 1/2" x 8 1/2" from Fabric **K**.

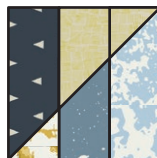


-
- The diagram illustrates the process of converting a 2D image into a 1D vector. It shows three vertical bars. The first bar on the left is divided into a dark blue upper section and a yellow lower section. An arrow points from this bar to the second bar in the middle. The second bar is divided into a light green upper section and a tan lower section. Another arrow points from the second bar to the third bar on the right. The third bar is divided into a light green upper section and a light blue lower section. This sequence represents the transformation of a 2D image into a 1D vector representation.

- Follow tablerunner illustration as a guide and note the orientation of your fabrics. You will need four of the following blocks.



BlockB



Block D



- Take a 1" x WOF strip from Fabric **J** and sew to attach both columns together. Trim off excess.



DIAGRAM 8

QUILT ASSEMBLY

Sew rights sides together.

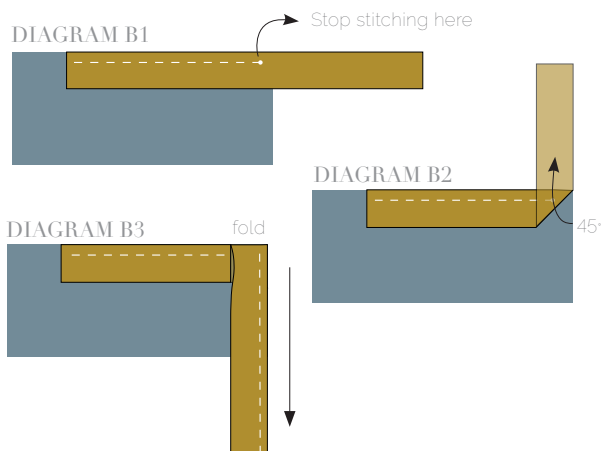
- Place BACKING FABRIC on a large surface wrong side up. Stretch it with masking tape against that surface.
- Place BATTING on top of backing fabric.
- Place TOP on top of the batting with right side facing up. Smooth away wrinkles using your hands.
- Pin all layers together and baste with basting thread, using long stitches. You can also use safety pins to join the layers.
- Machine or hand quilt starting at the center and working towards the corners. Remember that quilting motifs are a matter of personal preference. Have fun choosing yours!
- After you finished, trim excess of any fabric or batting, squaring the quilt to proceed to bind it.

BINDING

Sew rights sides together.

- Cut enough strips 1½" wide by the width of the fabric **OBR-59801** to make a final strip 142" long. Start sewing the binding strip in the middle of one of the sides of the quilt, placing the strip right side down and leaving an approximated 5" tail. Sew with ¼" seam allowance (using straight stitch), aligning the strip's raw edge with the quilt top's raw edge.
- Stop stitching ¼" before the edge of the quilt (**DIAGRAM B 1**). Clip the threads. Remove the quilt from under the machine presser foot. Fold the strip in a motion of 45° and upward, pressing with your fingers (**DIAGRAM B2**). Hold this fold with your finger, bring the strip down in line with the next edge, making a horizontal fold that aligns with the top edge of the quilt (**DIAGRAM B3**). Start sewing at ¼" of the border, stitching all the layers. Do the same in the four corners of the quilt.

- Stop stitching before you reach the last 5 or 6 inches. Cut the threads and remove the quilt from under the machine presser foot. Lay the loose ends of the binding flat along the quilt edge, folding the ends back on themselves where they meet. Press them together to form a crease. Using this crease as the stitching line, sew the two open ends of the binding with right sides together (you can help yourself marking with a pencil if the crease is difficult to see).
- Trim seam to $\frac{1}{4}$ " and press open. Complete the sewing. Turn binding to back of the quilt, turn raw edge inside and stitch by hand using blind stitch.



Congratulations
& enjoy

XXXXXXXXXXXXXXXXXXXXXXXXXXXXXXXXXXXX



artgalleryfabrics.com

NOTE: While all possible care has been taken to ensure the accuracy of this pattern, We are not responsible for printing errors or the way in which individual work varies. Please read instructions carefully before starting the construction of this quilt. If desired, wash and iron your fabrics before starting to cut.

© 2016 Courtesy of Art Gallery Quilts LLC. All Rights Reserved.