

Jessie



CLUTCH DESIGNED BY AGF studio

FREE PATTERN

XXXXXXXXXXXXXXXXXXXXXXXXXXXX



Jessie

CLUTCH DESIGNED BY AGF studio

FINISHED SIZE | 5 1/2' x 9 1/2'

Joie de Vivre
FABRICS DESIGNED BY bari j.



JOI-79121
TRES STREAKED SHINE



JOI-79126
ANGLE FOLIE PRISTINE



JOI-89120
PARADIS SWEET



JOI-89125
PUG VILLE ROSE



JOI-89123
PETIT POTPOURRI AZUR



DEN-CT-8001
BABBLING BROOK



DEN-SB-7001
CLAY TRACES



DEN-S-2004
INFUSED HYDRANGEA



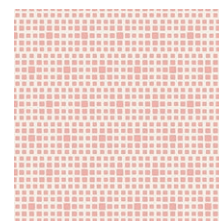
DEN-S-2001
INDIGO SHADOW



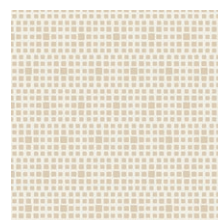
DEN-S-2003
AFTERNOON SAIL



DEN-OYD-6003
ROSE FEATHER



SE-601
ROSE WATER



SE-614
ALMONDETTE



FEEL THE DIFFERENCE © 2016 Courtesy of Art Gallery Quilts LLC. All Rights Reserved.



Option 1

FABRIC REQUIREMENTS

Fabric A	JOI-89120	Fat Quarter
Fabric B	DEN-S-2001	Fat Quarter
Fabric C	SE-601	Fat Quarter

Additional Materials

- 9" Zipper
- Fusible Fleece
- Small sew on snap
- 1/2" Swivel hook

CUTTING DIRECTIONS

1/2" seam allowances are included.

Option 1:

- Two (2) 6 1/2" x 10 1/2" rectangles from Fabric A
- Two (2) 6 1/2" x 10 1/2" rectangles from Fusible Fleece
- Two (2) 6 1/4" x 10 1/2" rectangles from Fabric C (Lining)
- Two (2) 5 x 10 1/2" rectangles from A (Pockets)
- Two Flaps from Fabric B
- One Flap from Fusible Fleece
- Two (2) 1 1/4" x 5" strips from Fabric B (Zipper tabs)
- One (1) 2"x 3" strip from Fabric B (Loop)
- One (1) 2" x 15" strip from Fabric B (strap)



Option 2

FABRIC REQUIREMENTS

Fabric A	JOI-79121	Scraps
Fabric B	JOI-89125	Scraps
Fabric C	JOI-89120	Scraps
Fabric D	JOI-79126	Scraps
Fabric E	JOI-89123	Scraps
Fabric F	DEN-OYD-6003	Scraps
Fabric G	DEN-S-2003	Scraps
Fabric H	DEN-SB-7001	Scraps
Fabric I	DEN-S-2004	Scraps
Fabric J	DEN-CT-8001	Scraps
Fabric K	DEN-S-2001	Fat Eighth
Fabric L	SE-601	Fat Quarter

Additional Materials

- 9" Zipper
- Fusible Fleece
- 1/2" Swivel hook

CUTTING DIRECTIONS

1/2" seam allowances are included.

Option 2:

2 1/2" squares:

- 6- from Fabric F
- 2- from Fabric A, B, C,D, E, G, J, and K
- 4- from Fabric H and I

- Two (2) 6 1/2" x 10 1/2" rectangles from Fusible Fleece
- Two (2) 6 1/4" x 10 1/4" rectangles from Fabric L (Lining)
- Two (2) 1 1/4" x 5" strips from Fabric K (Zipper tabs)
- One (1) 2" x 3" strip from Fabric K (Loop)
- One (1) 2" x 15" strip from Fabric K (strap)

CONSTRUCTION

Sew all rights sides together with 1/2" seam allowance.

Option 1:

Creating the Flap

- Take one of your flap pieces cut in Fabric B and iron fusible fleece to the wrong side of the fabric. Stitch horizontal straight lines about 1/2" apart. (Diagram 1)

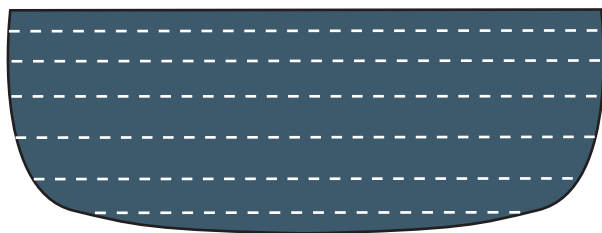


DIAGRAM 1

- Take your other flap piece from Fabric B and sew right sides together to your top flap at 1/2". Clip seam allowance at curves and turn right side out and press. (Diagram 2)
- Topstitch flap at 1/4".

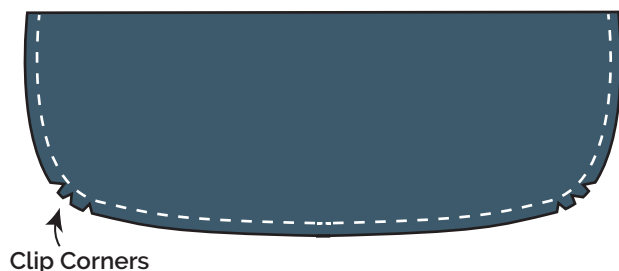


DIAGRAM 2

Creating the Pocket

- Take both 5" x 10 1/2" rectangles from Fabric A and sew together pieces at one 10 1/2" side, with right sides together. (Diagram 3)

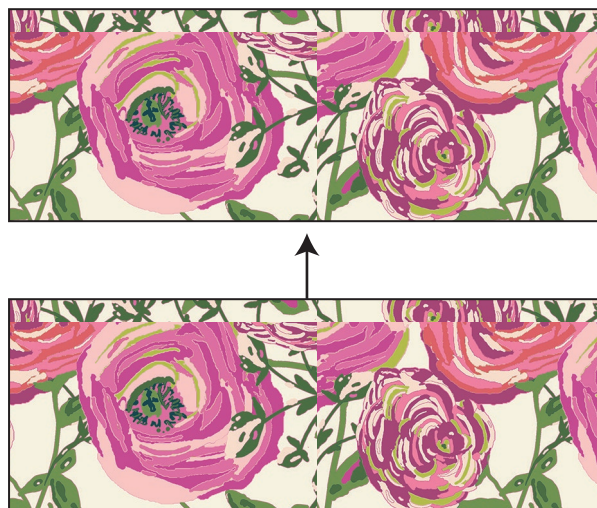


DIAGRAM 3

- Flip pieces so wrong sides are touching and press. Top stitch the top of your pocket at 1/4".
- Take two 6 1/2" x 10 1/2" rectangles from Fabric A and iron fusible fleece to the wrong sides of the fabric.
- Take pocket and place on top of a 6 1/2" x 10 1/2" rectangle from Fabric A. Sew at 1/4" to secure pocket to the front clutch. (Diagram 4)
- Take your 2" x 3" rectangle and fold long sides into the middle of your strip and then fold in half and press.
- Topstitch on both sides as close to the edge as possible. Fold in half and place about a 1" down from the top of your clutch. Make sure you place loop at a slight diagonal facing up. Pin loop and sew into place.

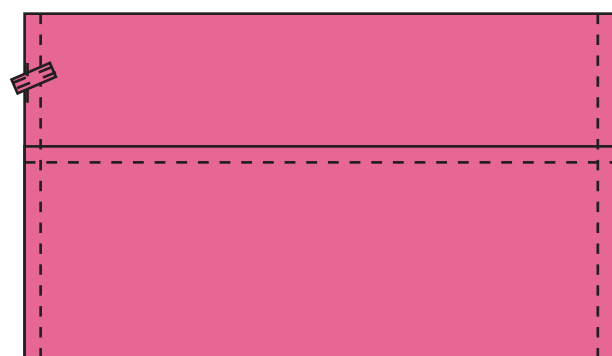
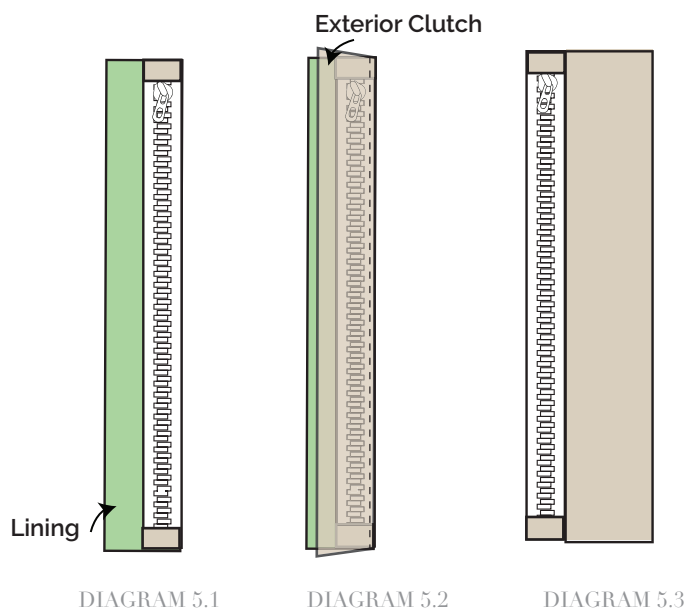


DIAGRAM 4

Zipper Construction

Insert your zipper foot-

- Take your 1 1/4' x 5' strips from Fabric B and fold short ends into center and then fold in half and press. Sandwich zipper ends into each zipper tab and stitch into place.
- Take lining and front clutch and sandwich them between your 9' zipper.
- Using a zipper foot sew as close to the zipper teeth as possible.
- Sew the two pieces of fabric with right sides together with the zipper sandwiched between the two pieces of fabric (Diagram 5.1 and 5.2)
- Press fabric away from zipper and edge stitch the seam allowance to the lining sewing as close the edge as possible..
- Repeat process for the other side of the zipper using your other lining piece and back clutch.



- Unzip zipper. Take the two fronts of the clutch and pin right sides together.
- Take the lining pieces and pin right sides together.
- Sew all the way around bag leaving a unsewn portion in the bottom of the lining of the clutch.
- Pull right side of the fabric through the unsewn portion. Hand stitch or machine stitch unsewn portion closed.

Making the Strap

- Take a 2' x 15' strip and fold long sides into the middle. Then fold in half and press and topstitch on both sides of your strap as close to the edge as possible.
- Thread one end of your strap through your swivel hook. Place ends right sides together and stitch ends together. Trim seam allowance as small as possible.
- Next place straps so wrong sides are touching and the seam allowance is tucked in and topstich as close to the top of the swivel hook as possible .
- Your strap is complete and now you are ready to hook it to the loop on your clutch!
- Add a sew on snap to your flap and body of your clutch so you can be able to open and close your flap.



CONSTRUCTION

Sew all rights sides together with 1/2" seam allowance.

Option 2:

Sewing the Front

- Take your 2 1/2' squares and arrange them following Diagram 6. Sew rows 1-3 together matching up seams.
- Repeat this process again with the left over squares.
- Iron fusible to the wrong side of your front and back clutch.

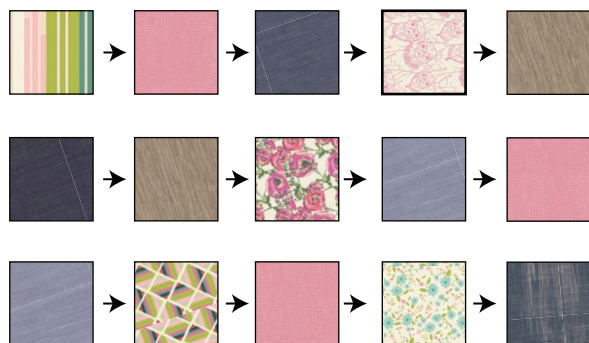


DIAGRAM 6

- Take your 2' x 3' rectangle and fold long sides into the middle of your strip and then fold in half and press.
- Topstitch on both sides as close to the edge as possible. Fold in half and place about a 1' down from the top of your clutch. Make sure you place loop at a slight diagonal facing up. Pin loop and sew into place.
- To complete the rest of the clutch refer to the Zipper Construction and making the Strap sections.



XXXXXXXXXXXXXXXXXXXXXXXXXXXXXXXXXXXX

Congratulations & enjoy

XXXXXXXXXXXXXXXXXXXXXXXXXXXXXXXXXXXX



artgalleryfabrics.com

NOTE: While all possible care has been taken to ensure the accuracy of this pattern, We are not responsible for printing errors or the way in which individual work varies.

Please read instructions carefully before starting the construction of this quilt. If desired, wash and iron your fabrics before starting to cut.



Jessie

CLUTCH DESIGNED BY AGF *studio*

Flap

Option 1

Cut 2