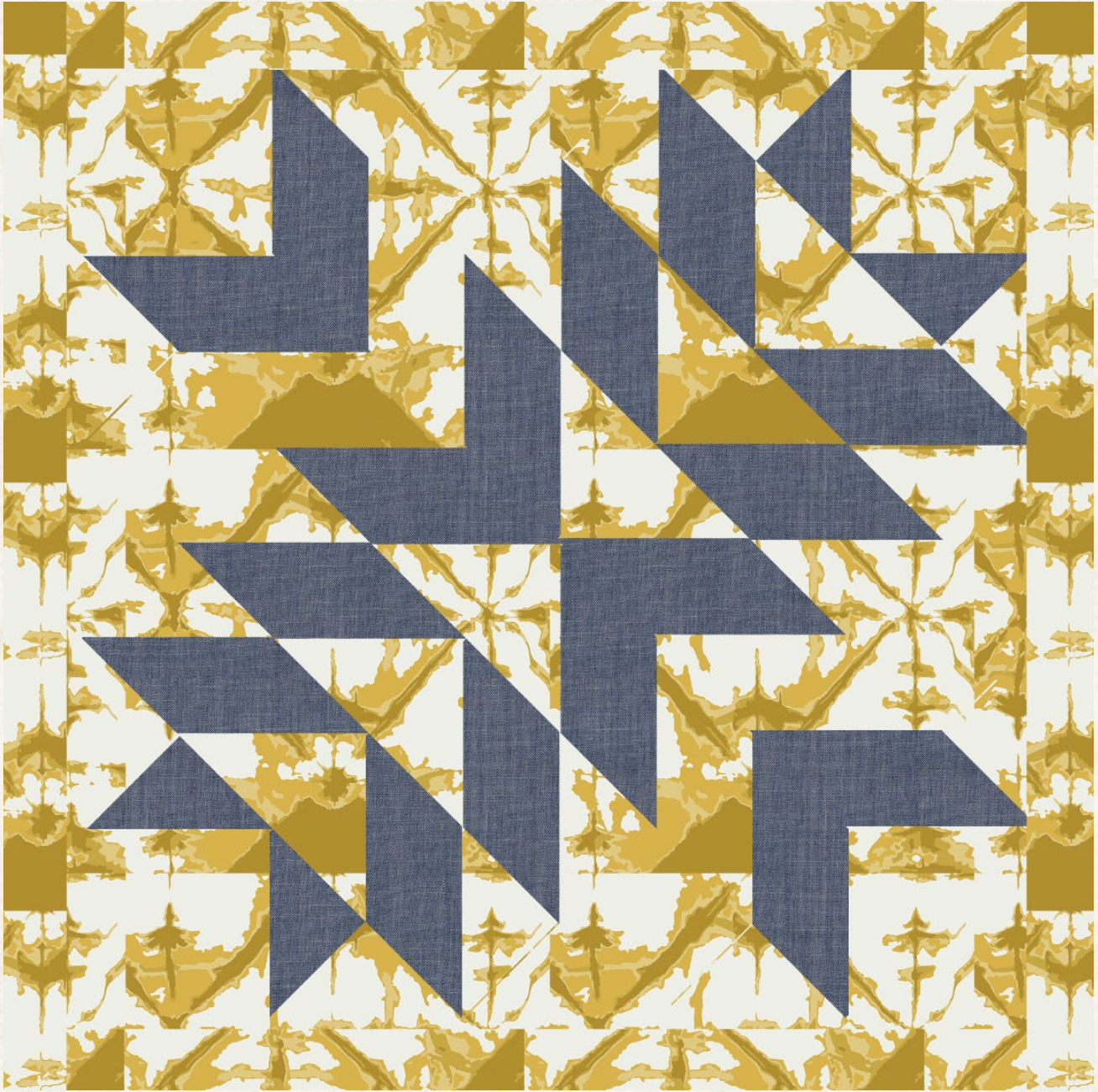


Echo





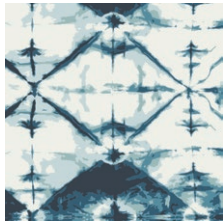
Echo

PILLOW DESIGNED BY AGF studio

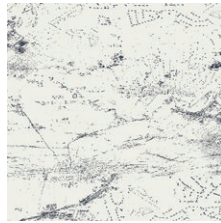
🌿 OBSERVER 🌿

FABRICS DESIGNED BY april▲rhodes

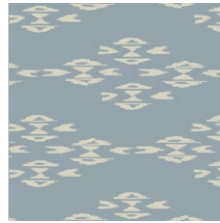
SHARD



OBR-49800
INDIGO WINDOW CRYSTAL



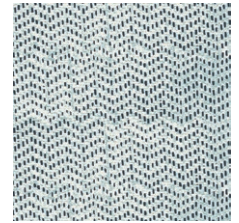
OBR-49801
AERIAL VIEW WHISPER



OBR-49802
OVERSHOT HAZE



OBR-49803
TRIANGLE TOKENS INK



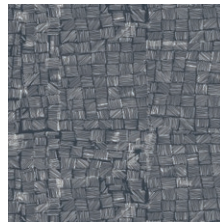
OBR-49804
TREADLE TRADITION



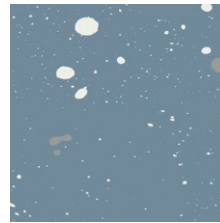
OBR-49805
HOMESPUN PRAXIS



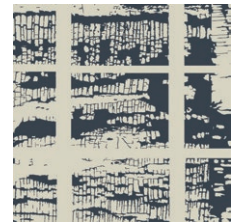
OBR-49806
STONE WASH CLOUDY



OBR-49807
MESH WITH ME MOM

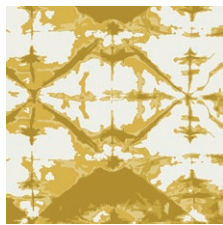


OBR-49808
SPECK STARDUST



OBR-49809
CHIPPING AWAY DEPTH

PARTICLE



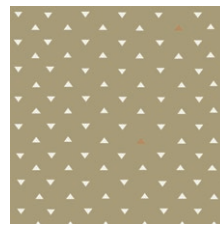
OBR-59800
INDIGO WINDOW SULPHUR



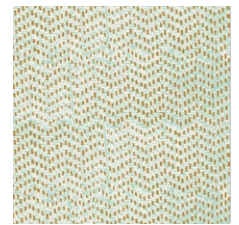
OBR-59801
AERIAL VIEW SAGE



OBR-59802
OVERSHOT GOLD



OBR-59803
TRIANGLE TOKENS HOME



OBR-59804
TREADLE LACE



OBR-59805
HOMESPUN WILLOW



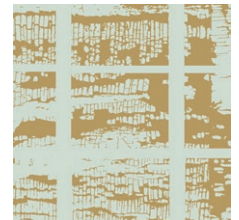
OBR-59806
STONE WASH GLAZE



OBR-59807
MESH WITH ME OLIVE



OBR-59808
SPECK BRONZE



OBR-59809
CHIPPING AWAY MICA



DEN-S-2003
AFTERNOON SAIL



HST CONSTRUCTION



FABRIC REQUIREMENTS

Fabric **A** OBR-59800 5/8 yd.
 Fabric **B** DEN-S-2003 1/6 yd.

BACKING FABRIC
 Fabric A - OBR-59800 (Included)

CUTTING DIRECTIONS

1/4" seam allowances are included.

Nine (9) 4 1/2" squares from **A** and **B**

Sixteen (16) 2 1/2" x 4 1/2" strips from Fabric **A**

Two (2) 1 1/2" x 14 1/2" strips from Fabric **A** (border)

Two (2) 1 1/2" x 16 1/2" strips from Fabric **A** (border)

Two (2) 16 1/4" x 11 1/2" rectangles from Fabric **A**
 (Backing)

Sew all rights sides together with 1/4" seam allowance.

- To create four half square triangle at a time take a 4 1/2" square from Fabric **A** and **B**. (Diagram 1)



DIAGRAM 1

- Place squares right side together and sew around the entire square at 1/4" seam allowance. (Diagram 2)

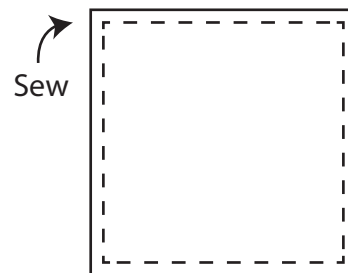


DIAGRAM 2

- Cut square at both diagonals with a rotary cutter. (Diagram 3)

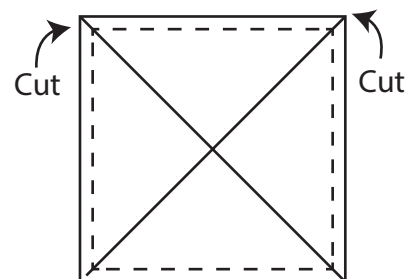


DIAGRAM 3

- Press seams open and trim HST's to 2 1/2". Repeat this process with the remaining 4 1/2" squares from Fabric **A** and **B**. You should get a total of 36 hst's.

- Sew hst's and 2 1/2' x 4 1/2' strips together following Diagram 4.
- Square off piece to 14 1/2'.

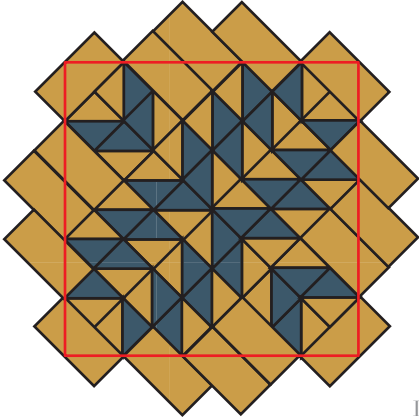


DIAGRAM 4

- Sew your border pieces and your pillow top is complete! (Diagram 5)

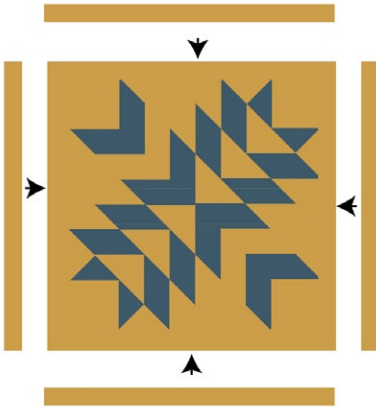


DIAGRAM 5

PILLOW ASSEMBLY

Sew rights sides together.

- Take both of your 16 1/4' x 11 1/2' rectangles from Fabric **A** and fold one 11 1/2' side on each piece 1/2" and press. Fold same edge in again at 1/2" and topstitch at 1/2" to secure edge.
- Place one rectangle right side together to the front of your pillow and then place the other backing rectangle on top.
- Stitch all the way around your piece at 1/2'.
- Flip piece right side out and press.
- Take a 16' pillow form and place into your pillow case.



Congratulations
& enjoy



artgalleryfabrics.com

NOTE: While all possible care has been taken to ensure the accuracy of this pattern, We are not responsible for printing errors or the way in which individual work varies. Please read instructions carefully before starting the construction of this quilt. If desired, wash and iron your fabrics before starting to cut.