



POPSICLE BAR



AGF
LIMITED
edition





DANA WILLARD

QUILT DESIGNED BY DANA WILLARD



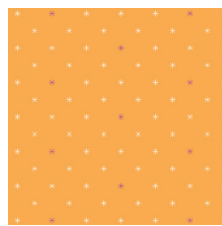
COLOR OPTION

Boardwalk Delight

FABRICS DESIGNED BY DANA WILLARD



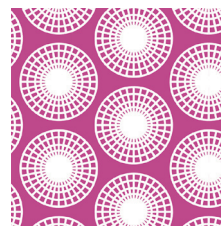
BWD-780
FLAVOR OF THE DAY



BWD-781
TWINKLE LIGHTS



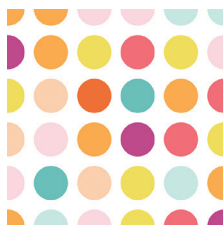
BWD-782
ICE CREAM SHOP



BWD-783
FERRIS WHEEL



BWD-784
EAT IT ALL



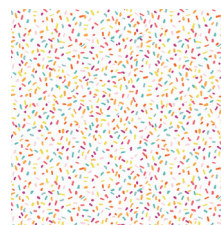
BWD-785
CANDY DOTS



BWD-786
BUSY BEACH



BWD-787
SODA STRAWS



BWD-788
SPRINKLES



BWD-789
I SCREAM, YOU SCREAM



Boardwalk Delight

FINISHED SIZE | 40" x 42"

FABRIC REQUIREMENTS

BOARDWALK DELIGHT

Fabric A	BWD-781	1/8 yd.
Fabric B	BWD-782	1/4 yd.
Fabric C	BWD-783	1/8 yd.
Fabric D	BWD-785	1/8 yd.
Fabric E	BWD-786	1/4 yd.
Fabric F	BWD-787	1/4 yd.
Fabric G	BWD-788	1/8 yd.
Fabric H	BWD-789	1/4 yd.

BACKING FABRIC

Fabric **I** BWD-784 1 3/8 yd.

BINDING FABRIC

Fabric **J** BWD-780 1/4 yd.

PURE ELEMENTS

Fabric K	PE-433	5/8 yd.
Fabric L	PE-430	1/4 yd.
Fabric M	PE-451	1/4 yd.
Fabric N	PE-424	1/4 yd.
Fabric O	PE-444	1/8 yd.
Fabric P	PE-420	1/4 yd.
Fabric Q	PE-449	1/8 yd.
Fabric R	PE-461	1/8 yd.
Fabric S	PE-438	1/4 yd.
Fabric T	PE-448	1/4 yd.

CUTTING DIRECTIONS

1/4" seam allowances are included.
WOF means width of fabric.

Three (3) 2 1/2' x 6 1/2' strips from fabric **A**

Ten (10) 6 1/2' x 2 1/2' strips from fabric **B, F**

Two (2) 2 1/2' x 6 1/2' strips from fabrics **C, D, R**

Three (3) 6 1/2' x 2 1/2' strips from fabric **E**

Five (5) 2 1/2' x 6 1/2' strips from fabric **G**

Six (6) 6 1/2' x 2 1/2' strips from fabric **H**

Thirty-two (32) 2 1/2' x 6 1/2' strips from fabric **I**

Seven (7) 2 1/2' x 6 1/2' strips from fabric **J**

Twelve (12) 2 1/2' x 6 1/2' strips from fabric **K**

Nine (9) 2 1/2' x 6 1/2' strips from fabric **L, N, Q**

Six (6) 2 1/2' x 6 1/2' strips from fabric **M, O**

Four (4) 2 1/2' x 6 1/2' strips from fabrics **P**

CONSTRUCTION

Sew all rights sides together with 1/4" seam allowance.

- Sew rectangles to each other row by row, following the illustration below. (Diagram 1)

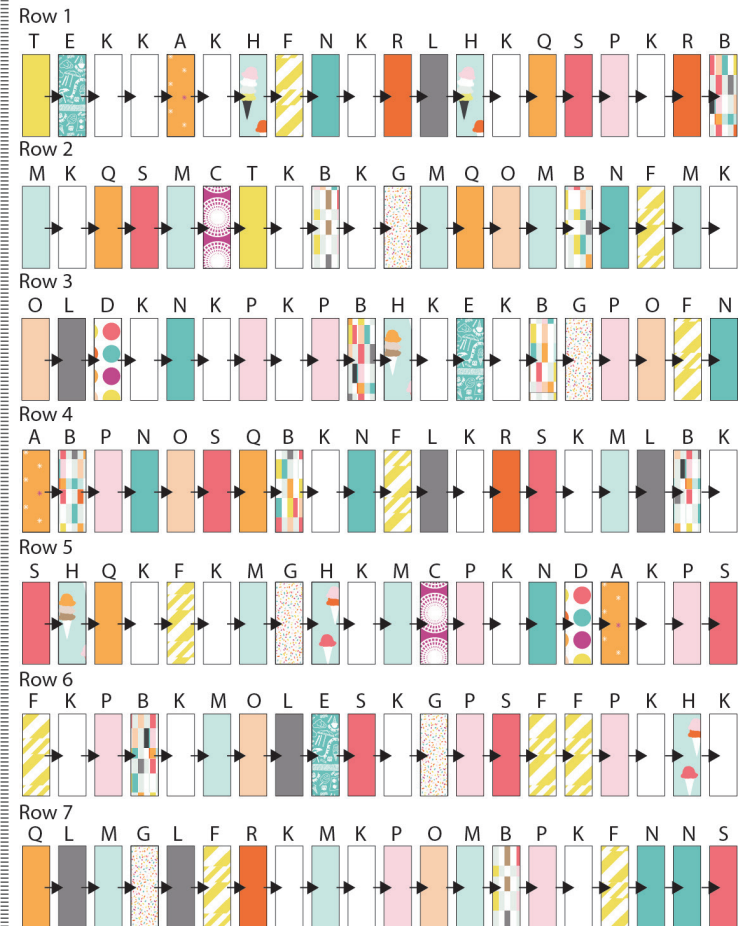


DIAGRAM 1

- For Row 1 sew together rectangles from the following fabrics: T>E>K>K>A>K>H>F>N>K>R>L>H>K>Q>S>P>K>R>B
- For Row 2 sew together rectangles from the following fabrics: M>K>Q>S>M>C>T>K>B>K>G>M>Q>O>M>B>N>F>M>K
- For Row 3 sew together rectangles from the following fabrics: O>A>D>K>N>K>P>K>P>B>H>K>E>K>B>G>P>O>F>N
- For Row 4 sew together rectangles from the following fabrics: A>B>P>N>O>S>Q>B>K>N>F>L>K>R>S>K>M>L>B>K

BINDING

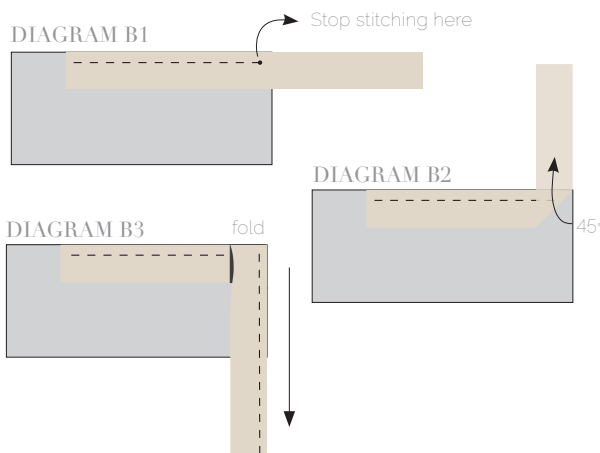
Sew rights sides together.

- For Row 5 sew together rectangles from the following fabrics: S>H>Q>K>F>K>M>G>H>K>M>C>P>K>N>D>A>K>P>S
- For Row 6 sew together rectangles from the following fabrics: F>K>P>B>K>M>O>L>E>S>K>G>P>S>F>P>K>H>K
- For Row 7 sew together rectangles from the following fabrics: Q>L>M>G>L>F>R>K>M>K>P>O>M>B>P>K>F>N>N>S
- Sew together all rows to complete the quilt top.

QUILT ASSEMBLY

Sew rights sides together.

- Place BACKING FABRIC on a large surface wrong side up. Stretch it with masking tape against that surface.
- Place BATTING on top of backing fabric.
- Place TOP on top of the batting with right side facing up. Smooth away wrinkles using your hands.
- Pin all layers together and baste with basting thread, using long stitches. You can also use safety pins to join the layers.
- Machine or hand quilt starting at the center and working towards the corners. Remember that quilting motifs are a matter of personal preference. Have fun choosing yours!
- After you finished, trim excess of any fabric or batting, squaring the quilt to proceed to bind it.



- Cut enough strips 1½' wide by the width of the fabric **J** to make a final strip 175' long. Start sewing the binding strip in the middle of one of the sides of the quilt, placing the strip right side down and leaving an approximated 5' tail. Sew with ¼' seam allowance (using straight stitch), aligning the strip's raw edge with the quilt top's raw edge.
- Stop stitching ¼' before the edge of the quilt (DIAGRAM B 1). Clip the threads. Remove the quilt from under the machine presser foot. Fold the strip in a motion of 45° and upward, pressing with your fingers (DIAGRAM B2). Hold this fold with your finger, bring the strip down in line with the next edge, making a horizontal fold that aligns with the top edge of the quilt (DIAGRAM B3). Start sewing at ¼' of the border, stitching all the layers. Do the same in the four corners of the quilt.
- Stop stitching before you reach the last 5 or 6 inches. Cut the threads and remove the quilt from under the machine presser foot. Lay the loose ends of the binding flat along the quilt edge, folding the ends back on themselves where they meet. Press them together to form a crease. Using this crease as the stitching line, sew the two open ends of the binding with right sides together (you can help yourself marking with a pencil if the crease is difficult to see).
- Trim seam to ¼' and press open. Complete the sewing. Turn binding to back of the quilt, turn raw edge inside and stitch by hand using blind stitch.



artgalleryfabrics.com

NOTE: While all possible care has been taken to ensure the accuracy of this pattern, We are not responsible for printing errors or the way in which individual work varies.