

EIGHT x THE FUN

Table Runner

20" x 40"

artgalleryfabrics.com



Featuring

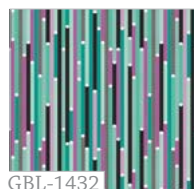
GEOMETRIC Bliss*

Collection by JENI BAKER



FABRIC REQUIREMENTS

Fabric A	GBL-1432	1/8 yd.
Fabric B	GBL-1436	1/8 yd.
Fabric C	GBL-2430	1/8 yd.
Fabric D	GBL-2434	1/8 yd.
Fabric E	GBL-2438	1/8 yd.
Fabric F	GBL-2433	1/8 yd.
Fabric G	GBL-2435	1/8 yd.
Fabric H	GBL-2431	1/8 yd.
Fabric I	GBL-1433	1/8 yd.
Fabric J	GBL-1430	1/8 yd.
Fabric K	PE-451	1/8 yd.
Fabric L	PE-441	1/8 yd.
Fabric M	PE-401	1/8 yd.
Fabric N	PE-421	1/8 yd.
Fabric O	PE-402	1/8 yd.
Fabric P	PE-408	1/4 yd.
Binding Fabric	GBL-1435	1/8 yd.
Backing Fabric	GBL-1439	5/8 yd.



GBL-1432
Parallel Segment
Seaglass



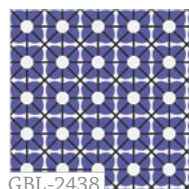
GBL-1436
Vertex Tulips
Mint



GBL-2430
Radical Blooms
Blush



GBL-2434
Poppie Coordinates
Petal



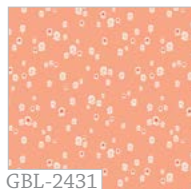
GBL-2438
Cuboid Cobalto



GBL-2433
Fractal Garland
Mist



GBL-2435
Polygons
Bulbinella



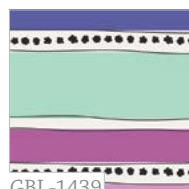
GBL-2431
Spherical Buds
Peach



GBL-1433
Fractal Garland
Black



GBL-1430
Radical Blooms
Fresh



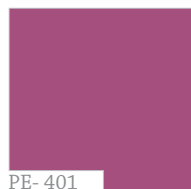
GBL-1439
Mobius Stripe
Cool



GBL-1435
Polygons
Callalily



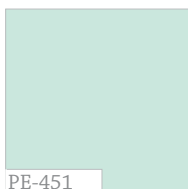
PE-441
Blueberry
Zest



PE-401
Verve
Violet



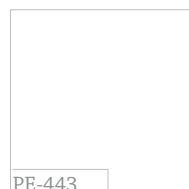
PE-421
Honey



PE-451
Icy
Mint



PE-402
Cozumel
Blue



PE-443
Snow



CUTTING DIRECTIONS

Four (4) 4 1/2" x 2 1/2" rectangles from Fabric **A, B, C, D, E**

Four (4) 2 1/2" x 2 1/2" squares from Fabric **A, B, C, D, E**

Four (4) 2 1/2" x 2 1/2" squares from Fabric **F, G, H, I, J**

Four (4) 4 1/2" x 2 1/2" rectangles from Fabric **K, L, M, N, O**

Four (4) 2 1/2" x 2 1/2" squares from Fabric **K, L, M, N, O**

Twenty (20) 2 1/2" x 2 1/2" squares from Fabric **P**

BLOCK CONSTRUCTION

Sew all rights sides together with 1/4" seam allowance. Press open.

- Sew one 2 1/2" x 2 1/2" square from Fabric **G** and sew it to one 2 1/2" x 2 1/2" square from Fabric **N**.

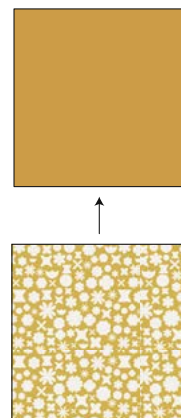
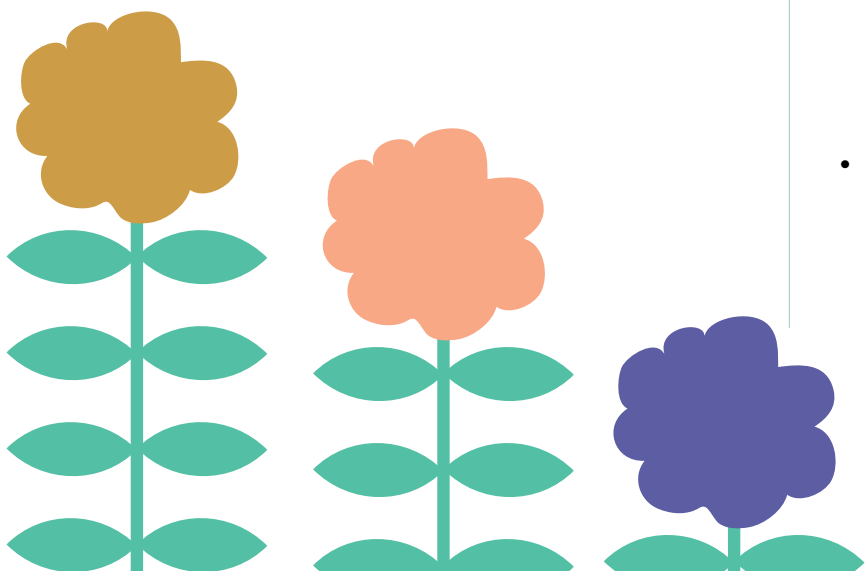


DIAGRAM 1

- Sew the piece you made in Diagram 1 to a 4 1/2" x 2 1/2" rectangle from Fabric **N**. (Diagram 2)



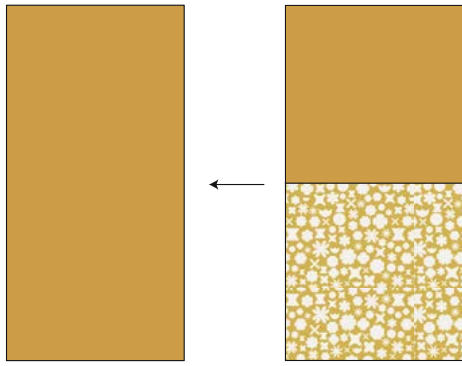


DIAGRAM 2

- Create three more blocks like the one you made in Diagram 2.
- Arrange blocks according to Diagram 3 and sew.

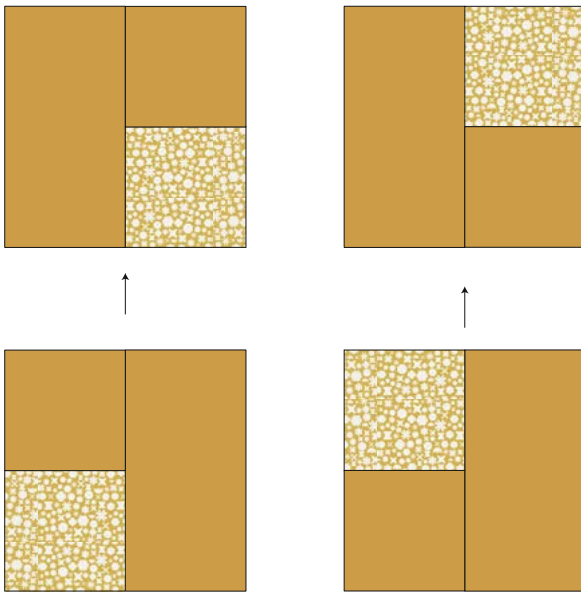


DIAGRAM 3

- Sew the two pieces you made in Diagram 3 together.

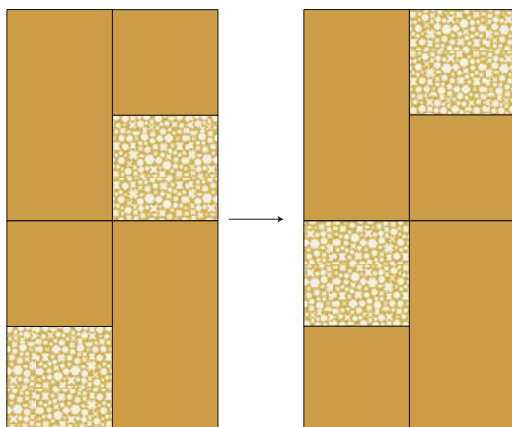


DIAGRAM 4

- Your finished block will look like Diagram 5. Repeat the same process with the remaining fabric pieces.

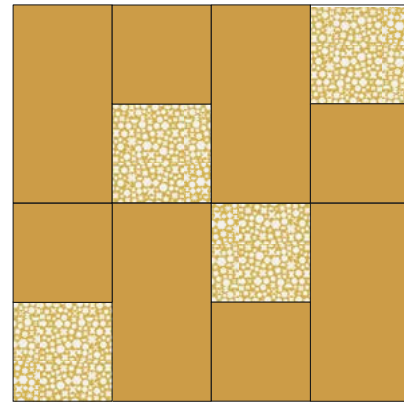


DIAGRAM 5

ASSEMBLING THE TOP

Sew all right sides together with 1/4" seam allowance. Press open.

- Arrange blocks using illustration as a guide. (Diagram 6)



DIAGRAM 6

QUILT ASSEMBLY

Sew right sides together.

- Place BACKING FABRIC on a large surface wrong side up. Stretch it with masking tape against that surface.
- Place BATTING on top of backing fabric.
- Place TOP on top of the batting with right side facing up. Smooth away wrinkles using your hands.
- Pin all layers together and baste with basting thread, using long stitches. You can also use safety pins to join the layers.

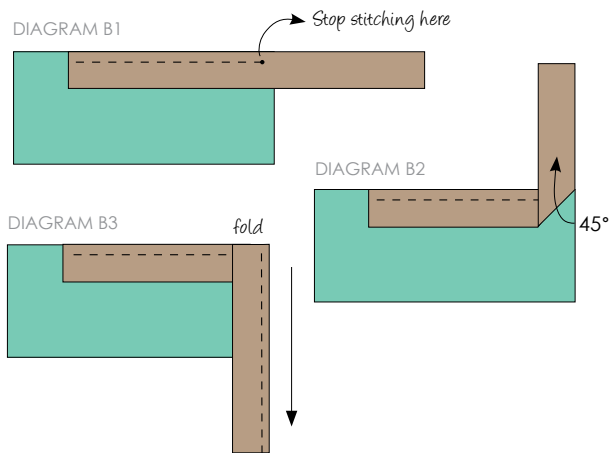


- Machine or hand quilt starting at the center and working towards the corners. Remember that quilting motives are a matter of personal preference. Have fun choosing yours!
- After you finished, trim excess of any fabric or batting, squaring the quilt to proceed to bind it.

BINDING

Sew right sides together.

- Cut enough strips $1\frac{1}{2}$ " wide by the width of the fabric [GBL-1435](#) to make a final strip 134" long. Start sewing the binding strip in the middle of one of the sides of the quilt, placing the strip right side down and leaving an approximated 5" tail. Sew with $\frac{1}{4}$ " seam allowance (using straight stitch), aligning the strip's raw edge with the quilt top's raw edge.
- Stop stitching $\frac{1}{4}$ " before the edge of the quilt (DIAGRAM B 1). Clip the threads. Remove the quilt from under the machine presser foot. Fold the strip in a motion of 45° and upward, pressing with your fingers (DIAGRAM B 2). Hold this fold with your finger, bring the strip down in line with the next edge, making a horizontal fold that aligns with the top edge of the quilt (DIAGRAM B 3). Start sewing at $\frac{1}{4}$ " of the border, stitching all the layers. Do the same in the four corners of the quilt.
- Stop stitching before you reach the last 5 or 6 inches. Cut the threads and remove the quilt from under the machine presser foot. Lay the loose ends of the binding flat along the quilt edge, folding the ends back on themselves where they meet. Press them together to form a crease. Using this crease as the stitching line, sew the two open ends of the binding with right sides together (you can help yourself marking with a pencil if the crease is difficult to see).
- Trim seam to $\frac{1}{4}$ " and press open. Complete the sewing. Turn binding to back of the quilt, turn raw edge inside and stitch by hand using blind stitch.



enjoy!



Feel the difference
For more free patterns visit:
artgalleryfabrics.com

NOTE: While all possible care has been taken to ensure the accuracy of this pattern, we are not responsible for printing errors or the way in which individual work varies. Please read instructions carefully before starting the construction of this quilt. If desired, wash and iron your fabrics before starting to cut.
© 2014 Courtesy of Art Gallery Quilts LLC.
All Rights Reserved.

