

Crossroads Pillow

FINISHED SIZE: 24" × 12"

FREE PROJECT
by PAT BRAVO



Featuring
HYPERREAL GARDEN COLLECTION



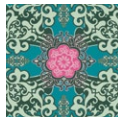
Fabric A
HG-8403
Mirage Rose



Fabric F
HG-7403
Mirage Fuchsia



Fabric B
HG-7401
Lush Foliage Blanc



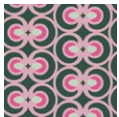
Fabric G
HG-7402
Euphoria Junebery



Fabric C
HG-7400
Flowershock Mauve



Fabric H
HG-7404
Radiant Bouquet Emerald



Fabric D
HG-7405
Op Art Intense



Fabric I
HG-8407
Illusion Warm



Fabric E
HG-7408
Illusion Cashmere



CUTTING DIRECTIONS

FOR ALL BLOCKS CUT (8 blocks total)

Four (4) 10⁷/₈" × 2¹/₂" strips from fabric **B**

Four (4) 10⁷/₈" × 2¹/₂" strips from fabric **C**

Four (4) 10⁷/₈" × 2¹/₂" strips from fabric **G**

Four (4) 10⁷/₈" × 2¹/₂" strips from fabric **H**

Eight (8) 11¹/₂" × 7⁷/₈" strips from fabric **E**

One (1) 24¹/₂" × 12¹/₂" rectangle from fabric **E**

Two (2) 3⁷/₈" squares from fabric **A**

Cut them once diagonally to get 4 triangles.

Two (2) 3⁷/₈" squares from fabric **D**

Cut them once diagonally to get 4 triangles.

Two (2) 3⁷/₈" squares from fabric **F**

Cut them once diagonally to get 4 triangles.

Two (2) 3⁷/₈" squares from fabric **I**

Cut them once diagonally to get 4 triangles.

FOR PIPING CUT

One (1) 80" × 1¹/₂" strip from fabric **E***

* In order to get these long strips you need to join two Width Of Fabric strips together.

MATERIALS

Fat Eight of Fabric **A**

Fat Eight of Fabric **B**

Fat Eight of Fabric **C**

Fat Eight of Fabric **D**

Fat Eight of Fabric **F**

Fat Eight of Fabric **G**

Fat Eight of Fabric **H**

1/4 yd of Fabric **E**

3/8 yd of Fabric **I**

12" × 24" pillow form

1¹/₈ yd piping cord (1/4" thick)





BLOCKS CONSTRUCTION

All 8 blocks are constructed the same way
(sew all fabrics right sides together)

FINISHED BLOCKS

Combination 1



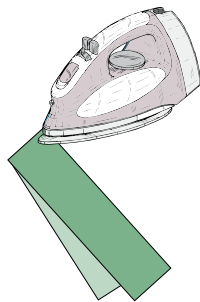
Combination 2



FOR ALL BLOCKS

- The secret to make all blocks is to make a crease on the center half (lengthwise) on EVERY strip and triangle. You can do this with your finger or better with an iron. (DIAGRAM 1)

DIAGRAM 1



Combination 1

- Position one **D** triangle on top of one fabric **C** strip, RIGHT sides facing and RAW EDGES aligned. Match both creases and pin. Sew along the entire edge with a 1/4" seam allowance. (DIAGRAM 2)
 - Press open. (DIAGRAM 3)
- NOTE:** You will notice that the strip is longer than the triangle. Don't worry; just match the creases. You will trim the excess fabric later to get a square block.

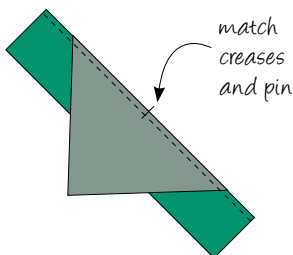


DIAGRAM 2



DIAGRAM 3

- Repeat this step with one fabric **E** strip on top of the fabric **C** strip.
- Repeat with a fabric **B** strip on top of the fabric **E** strip.
- Position one fabric **A** triangle on top of fabric **B** strip, RIGHT sides facing and RAW EDGES aligned. Match both creases and pin. Sew along the entire edge with a 1/4" seam allowance. (DIAGRAM 4)
- Make, in the same way, a total of 4 blocks.
- You will end with blocks looking like DIAGRAM 5.

DIAGRAM 4

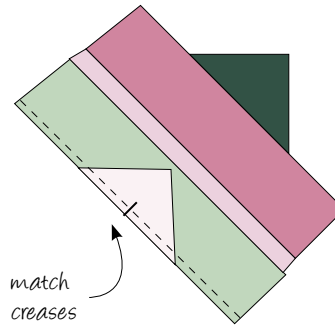
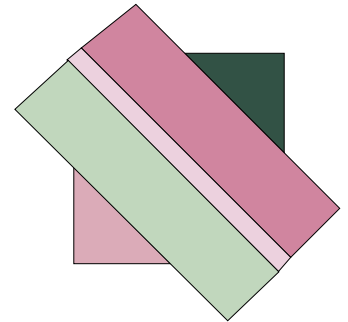
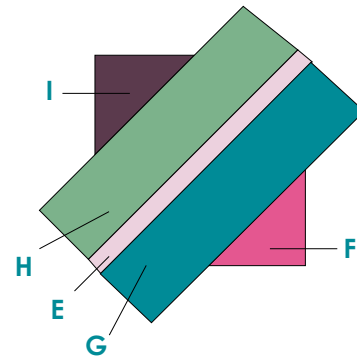


DIAGRAM 5



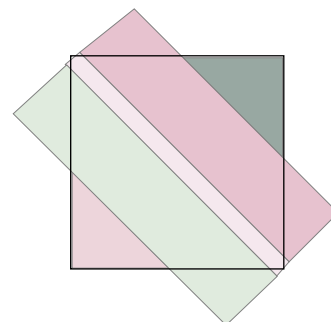
Combination 2

- For combination 2 blocks, follow same steps using the following fabrics. Make a total of 4 blocks.



TRIMMING THE BLOCKS

- Position a 6 1/2" square ruler over one block. **NOTE:** Be sure that the corners of the ruler meet the corners of the two triangles of the block.
- Holding the ruler firmly in place, trim borders with a rotary cutter to a 6 1/2" finished size block.
- Trim, in the same way, ALL 8 blocks.





ASSEMBLING PILLOW FRONT

(sew all fabrics right sides together)

- Begin sewing the first row. Rotate and alternate the blocks as shown in the diagram. Sew 4 blocks for the first row. Make the remaining row in the same way.
- Sew the rows together. Take much care to match seam intersections between each block (lock them with pins if necessary).
- Press all seams toward the same direction. Press the **WHOLE TOP** with a hot steam iron.



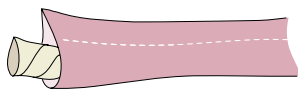
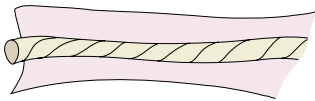
ASSEMBLING PILLOW

MAKE PIPING PIECE

- Lay this long strip flat, **RIGHT** side down. Place the cording piece along the center, aligning the beginning of both. (DIAGRAM 6)
- Wrap the fabric around the cording as you work. Using your zipper foot attachment for your sewing machine, baste down the entire length of the strip roughly $\frac{1}{8}$ " from the cording.
- Trim the seam allowance to $\frac{1}{4}$ " from the seam line. (DIAGRAM 7)

DIAGRAM 6

DIAGRAM 7



ATTACH PIPING CORD

- Place the front unit (patchwork) **RIGHT** side up. Pin the piping piece all around the sides, with raw edges aligning.
- With the piping or zipper foot on the machine, stitch the piping piece to the fabric slightly $\frac{1}{4}$ " from the edge. Begin stitching on the middle of one pillow side leaving a loose tail on the piping of about 1". (DIAGRAM 8)
- Remove pins as you stitch. When you get close to a corner, stop stitching and make two slits on the piping fabric (exactly on the corner) with a pair of scissors a bit less than $\frac{1}{4}$ " deep (be careful not to cut into the stitching line). (DIAGRAM 9) This step is to help you pivot 90° your stitching on each corner.

DIAGRAM 8

begin stitching

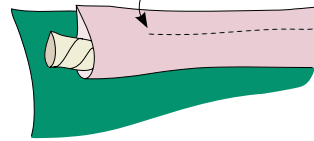
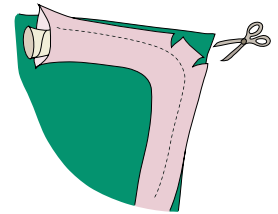


DIAGRAM 9



- Stitch all the way around and stop 1" before the meeting point. Unwrap the fabric covering the cord. Overlap the ending tail over the starting tail and cut the excess piece where they meet. Wrap the fabric back again and cut it $\frac{1}{2}$ " passing the cord. Fold the end $\frac{1}{4}$ " inwards and wrap over the starting tail. Make sure the fabric covers the piping cord. Stitch the open section and backstitch both ends to secure. (DIAGRAM 10)
- Keep this unit **RIGHT** side up, place the fabric **I** square on top (**RIGHT** side down). With raw edges aligned, start sewing with $\frac{1}{4}$ " seam, sandwiching the piping.
- Sew all the way around, starting from one of the sides, and leaving a 4" opening to insert the pillow form. (DIAGRAM 11)
- Turn the pillow right side out and insert the pillow form, and close by hand.

raw edges aligned

DIAGRAM 10

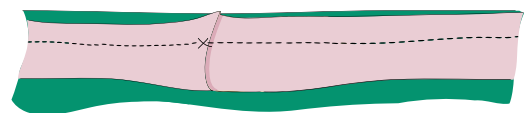
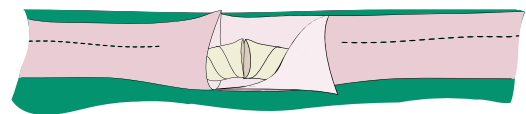
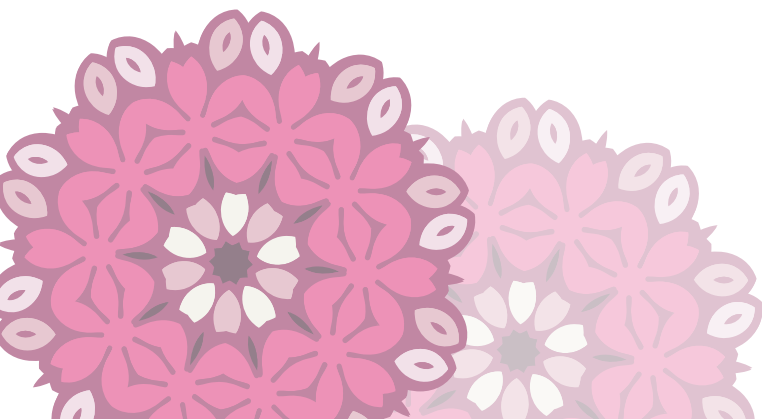


DIAGRAM 11





To see more patterns, fabrics
and lots of inspiration visit:

patbravo.com



Feel the difference

For wholesale visit:

artgalleryfabrics.com

NOTE: While all possible care has been taken to ensure the accuracy of this pattern, we are not responsible for printing errors or the way in which individual work varies. Please read instructions carefully before starting the construction of this quilt. If desired, wash and iron your fabrics before starting to cut.

© 2011 Courtesy of Art Gallery Quilts LLC.
All Rights Reserved.

