

FREE PATTERN

xxxxxxxxxxxxxxxxxxxx

# Canyon Sands

PLACEMATS SEWING PROJECT



xxxxxxxxxxxxxxxxxxxx



XXXXXXXXXXXXXXXXXXXXXXXXXXXX

PROJECT DESIGNED BY AGF STUDIO

# Canyon Sands

AGFstudio



DENIM PRINTS



DEN-P-1000  
PAINTERLY WASH



DEN-P-1001  
DITSY ABRASION



DEN-P-1002  
RAGGED DAISIES



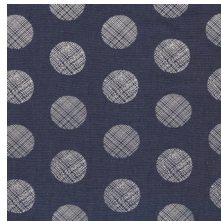
DEN-P-1003  
DIAMOND ARCULATE



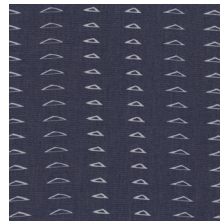
DEN-P-1004  
PUZZLE SANDBLAST



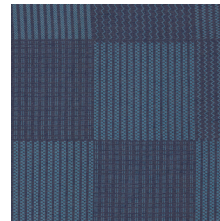
DEN-P-1005  
STITCHED OCHI



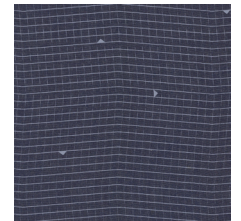
DEN-P-1006  
POINTELLE RINGS



DEN-P-1007  
DISTRESSED TRIANGLES



DEN-P-1008  
ALLOVER BARTACKS



DEN-P-1009  
BOMBAZINE INSPIRED



DEN-P-1005  
CASTED LOOPS

SOLID SMOOTH



DEN-S-2000  
WICKED SKY



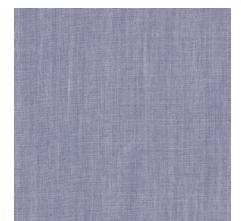
DEN-S-2001  
INDIGO SHADOW



DEN-S-2002  
COOL FOLIAGE



DEN-S-2003  
AFTERNOON SAIL



DEN-S-2004  
INFUSED HYDRANGEA

SOLID SMOOTH



DEN-S-2005  
FROSTED SAGE



DEN-S-2006  
ADOBE CLAY



DEN-S-2007  
NECTARINE SUNRISE

# Canyon Sands

FINISHED SIZE | 12' x 18'

## FABRIC REQUIREMENTS

Fabric <b>A</b>	DEN-S-2006	3/8 yd.
Fabric <b>B</b>	DEN-S-2004	3/8 yd.
Fabric <b>C</b>	DEN-S-2007	1/8 yd.
Fabric <b>D</b>	DEN-S-2000	1/8 yd.
Fabric <b>E</b>	DEN-P-2007	3/8 yd.
Fabric <b>F</b>	DEN-P-2004	1/4 yd.

### BACKING FABRIC

DEN-S-2006 3/4 yds. *(Suggested)*

MAKES FOUR PLACEMATS

## CUTTING DIRECTIONS

1/4" seam allowances are included.  
WOF means width of fabric.

- Four (4) 2 1/2' x 12 1/2' strips from fabric **A**
- Four (4) 1 1/4' x 12 1/2' strips from fabric **A**
- Eight (8) 2' x 3 1/2' rectangles from fabric **A**
- Four (4) 3 3/8' x 3 3/8' squares from fabric **A**
- Four (4) 4 3/4' x 4 3/4' squares from fabric **A**
- Four (4) 2 1/2' x 12 1/2' strips from fabric **B**
- Eight (8) 2' x 3 1/2' rectangles from fabric **B**

- Four (4) 3 3/8' x 3 3/8' squares from fabric **B**
- Four (4) 4 3/4' x 4 3/4' squares from fabric **B**
- Four (4) 4 1/4' x 4 1/4' squares from fabric **C**
- Four (4) 2' x 12 1/2' strips from fabric **D**
- Four (4) 1 1/2' x 12 1/2' strips from fabric **E**
- Four (4) 2 1/2' x 12 1/2' strips from fabric **E**
- Four (4) 3 3/8' x 3 3/8' squares from fabric **E**
- Four (4) 3' x 12 1/2' strips from fabric **F**
- Four (4) 3 3/8' x 3 3/8' squares from fabric **E**

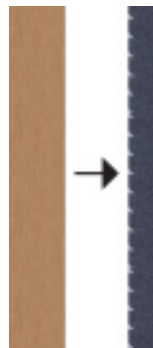
## CONSTRUCTION

*Sew all rights sides together with 1/4" seam allowance.*

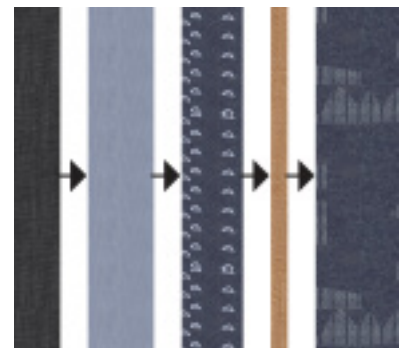
- Sew together strips for the left side of the placemats. Fabric A (2 1/2' wide) to Fabric E (1 1/2' wide)
- Sew together strips for the right side of the placemats. Fabrics: D > B > E (2 1/2' wide) > A (1 1/4' wide) > F.

DIAGRAM 1

LEFT SIDE



RIGHT SIDE



### Half Square Triangle Assembly:

- Pin together the following pairs of  $3\frac{7}{8}$ " squares, right sides together:
  - Two (2) Fabric **A**/ Fabric **F**
  - Two (2) Fabric **B**/ Fabric **F**
  - Two (2) Fabric **A**/ Fabric **E**
  - Two (2) Fabric **B**/ Fabric **E**
- Sew half square triangles (HST). Mark the center diagonal line on squares, now sew a scant  $\frac{1}{4}$ " on each side of the mark.
- Cut long the center diagonal line of each square. Press open.

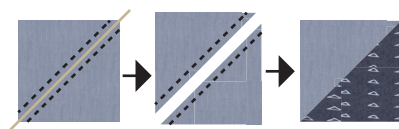


DIAGRAM 2

- Sew together your HST according to the diagram.

Fabric **B/F**--> **A/F**

Fabric **B/E**--> **A/E**



DIAGRAM 3

### Flying Geese:

- Cut  $4\frac{1}{4}$ " Fabric C squares into 4 triangles, cutting across both diagonals.



DIAGRAM 4

- Do the same to the  $4\frac{3}{4}$  squares in Fabrics **A** & **B**.
- You should end up with twelve triangles total for each fabric.
- Now take one of the triangles made with the squares from fabric **C** and attach the triangles from fabrics **A** & **B** to either side. Long sides of **A** & **B** to short sides of **C**.



DIAGRAM 5

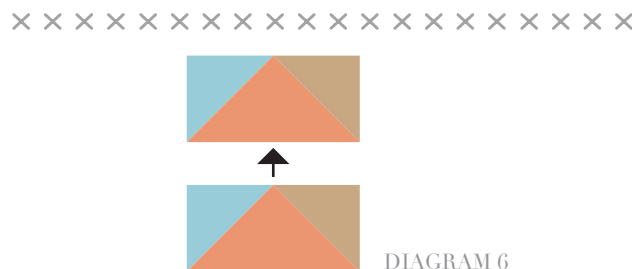


DIAGRAM 6

- Sew completed flying geese units into pairs (one atop the other).
- You should end up with a total of 8 flying geese squares  $3\frac{1}{2}' \times 3\frac{1}{2}'$
- Sew the rectangles from fabrics **A** & **B** to either side according to the diagram.

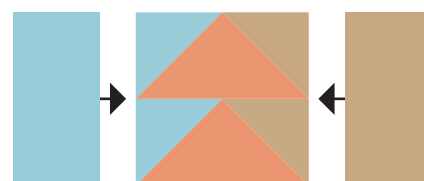


DIAGRAM 7

- Assemble HST blocks and flying geese blocks referring to the finished placemat diagram.
- Fabric **F** HST block > flying geese block > Fabric **E** HST block > flying geese block



DIAGRAM 8

- Now sew together with the left and right side pieces from the beginning, using the cover picture for reference.
- Left piece > quilted block column you just completed > Right piece
- Press



## ASSEMBLING PLACEMATS

- Cut out four (4) 12½" x 18½" rectangles from backing fabric.
- Pin placemat to backing fabric, right sides together.
- Sew all around at ¼" seam allowance, leaving a 4" opening unsewn.
- Trim corners and flip right sides out through opening.
- Press, ironing seam allowances in at opening.
- Top-stitch ⅛" from edge all around mats.
- You are finished! Set your table with you new Canyon Sands placemats.



[artgalleryfabrics.com](http://artgalleryfabrics.com)

**NOTE:** While all possible care has been taken to ensure the accuracy of this pattern, We are not responsible for printing errors or the way in which individual work varies. Please read instructions carefully before starting the construction of this quilt. If desired, wash and iron your fabrics before starting to cut.

© 2016 Courtesy of Art Gallery Quilts LLC. All Rights Reserved.