

X
X
X
X
X
X
X
X
X
X
X
X

A vertical quilt panel. The central strip is a narrow, repeating pattern of interlocking geometric shapes in white, black, and blue. This central strip is flanked by large, stylized, multi-colored geometric shapes (triangles and squares) in shades of red, blue, and grey, creating a complex, abstract design.

XXXXXXXXXXXXXXXXXXXX



Zagged

AGFstudio

QUILT DESIGNED BY AGF STUDIO

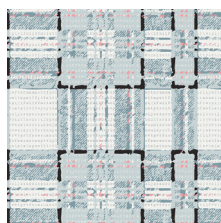
PASTEL THRIFT

FABRICS DESIGNED BY AGF STUDIO

CRYSTAL BALL



PST - 75500
PORCELAINS PRISM



PST - 75501
TYPE-PLAID ALLUSION



PST - 75502
MAGIC POTION SCENT



PST - 75504
FORESHADOWING SPELL



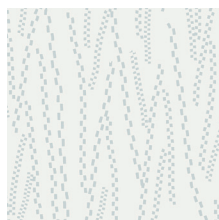
PST - 75505
GRAMOFLOLA LULLABIE



PST - 75506
BIBLIOMANIA ANTIDOTE



PST - 75507
REMINDER ALLOY



PST - 75508
SHREDDED CHESS FAINT



PST - 75509
ANALOG III CRUX

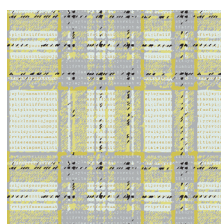


PST - 75510
STILL PERSPECTIVE

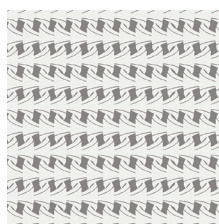
ROVER CURIO



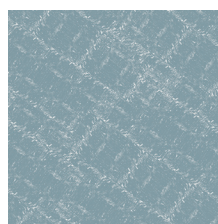
PST - 85500
PORCELAINS BAROQUE



PST - 85501
TYPED-PLAID ABSTRUSITY



PST - 85503
ENCOUNTERED PAVILLONS



PST - 85504
FORESHADOWING ADAGE



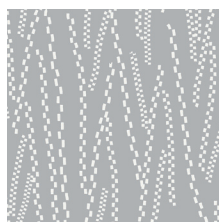
PST - 85505
GRAMOFLOLA OPERA



PST - 85506
BIBLIOMANIA CANDELIGHT



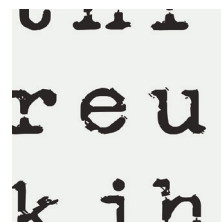
PST - 85507
REMINDER HIDDEN



PST - 85508
SHREDDED CHESS LITHO



PST - 85509
ANALOG III PIXY



PST - 85511
REMINDER BOLD



FEEL THE DIFFERENCE © 2015 Courtesy of Art Gallery Quilts LLC. All Rights Reserved.



FINISHED SIZE | 20' x 57'

FABRIC REQUIREMENTS

Fabric A	PST-85504	FAT EIGHTH
Fabric B	PST-75506	FAT EIGHTH
Fabric C	PST-85508	FAT EIGHTH
Fabric D	PST-75508	FAT EIGHTH
Fabric E	PE-413	$\frac{3}{8}$ yd
Fabric F	PST-75509	FAT EIGHTH
Fabric G	PST-75510	$\frac{5}{8}$ yd
Fabric H	PE-433	$\frac{5}{8}$ yd

BACKING FABRIC

PST-75510 $\frac{7}{8}$ yds. (Suggested)

BINDING FABRIC

PST-75510 (Fabric **E**) (included)

CUTTING DIRECTIONS

$\frac{1}{4}$ " seam allowances are included.
WOF means width of fabric.

Four (4) 13" x 2 $\frac{1}{4}$ " rectangles from fabrics **A, B, C, D**
and **F**

Five (5) 13" x 2 $\frac{1}{4}$ " rectangles from fabric **E**

Five (5) 9 $\frac{5}{8}$ " squares from fabric **G**

Five (5) 9 $\frac{5}{8}$ " squares from fabric **H**

CONSTRUCTION

Sew all rights sides together with $\frac{1}{4}$ " seam allowance.

Sew together the strips in the following order:

- Column 1 Strip Set: **A > B > C > D > E**
- Column 2 Strip Set: **B > C > D > E > F**
- Column 3 Strip Set: **C > D > E > F > A**
- Column 4 Strip Set: **D > E > F > A > B**
- Column 5 Strip Set: **E > F > A > B > C**

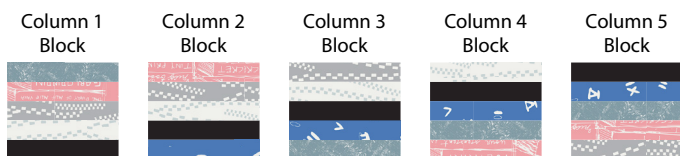


DIAGRAM 1

XX

- From each strip set, crosscut five segments at 2 $\frac{1}{4}$ " wide each.
- Assemble columns into blocks as shown in diagram 2.
- Press blocks and then cut on the diagonal.



Join Columns

Cut on Diagonal

DIAGRAM 2

- Pair the white 9 $\frac{5}{8}$ " squares with the Fabric **G** squares, right sides together. Construct 2 half square triangles (HST) from each pair of squares in the traditional method.
- To make the HST: Mark the diagonal, then mark your sewing lines $\frac{1}{4}$ " away from the diagonal. Sew on lines, cut on the diagonal and press both open.

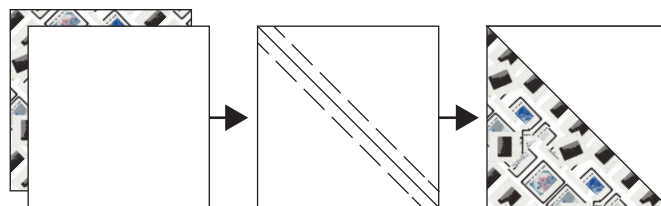


DIAGRAM 3

ASSEMBLING THE TOP

Sew all rights sides together with $\frac{1}{4}$ " seam allowance. Press open.

- Assemble each row according to diagram 4. The diagonals of the pieced blocks form the edges of the tablerunner.
- When joining rows you will be off-setting the rows by one block to make the diagonal. Refer to diagram 4.
- After you have joined all the rows square off the ends according to the front illustration.

NOTE: While all possible care has been taken to ensure the accuracy of this pattern, We are not responsible for printing errors or the way in which individual work varies. Please read instructions carefully before starting the construction of this quilt. If desired, wash and iron your fabrics before starting to cut.

BINDING

Sew rights sides together.

- Cut enough strips $1\frac{1}{2}$ ' wide by the width of the fabric **E** to make a final strip 164' long. Start sewing the binding strip in the middle of one of the sides of the quilt, placing the strip right side down and leaving an approximated 5' tail. Sew with $\frac{1}{4}$ ' seam allowance (using straight stitch), aligning the strip's raw edge with the quilt top's raw edge.
- Stop stitching $\frac{1}{4}$ ' before the edge of the quilt (**DIAGRAM B 1**). Clip the threads. Remove the quilt from under the machine presser foot. Fold the strip in a motion of 45° and upward, pressing with your fingers (**DIAGRAM B 2**). Hold this fold with your finger, bring the strip down in line with the next edge, making a horizontal fold that aligns with the top edge of the quilt (**DIAGRAM B 3**). Start sewing at $\frac{1}{4}$ ' of the border, stitching all the layers. Do the same in the four corners of the quilt.
- Stop stitching before you reach the last 5 or 6 inches. Cut the threads and remove the quilt from under the machine presser foot. Lay the loose ends of the binding flat along the quilt edge, folding the ends back on themselves where they meet. Press them together to form a crease. Using this crease as the stitching line, sew the two open ends of the binding with right sides together (you can help yourself marking with a pencil if the crease is difficult to see).
- Trim seam to $\frac{1}{4}$ ' and press open. Complete the sewing. Turn binding to back of the quilt, turn raw edge inside and stitch by hand using blind stitch.

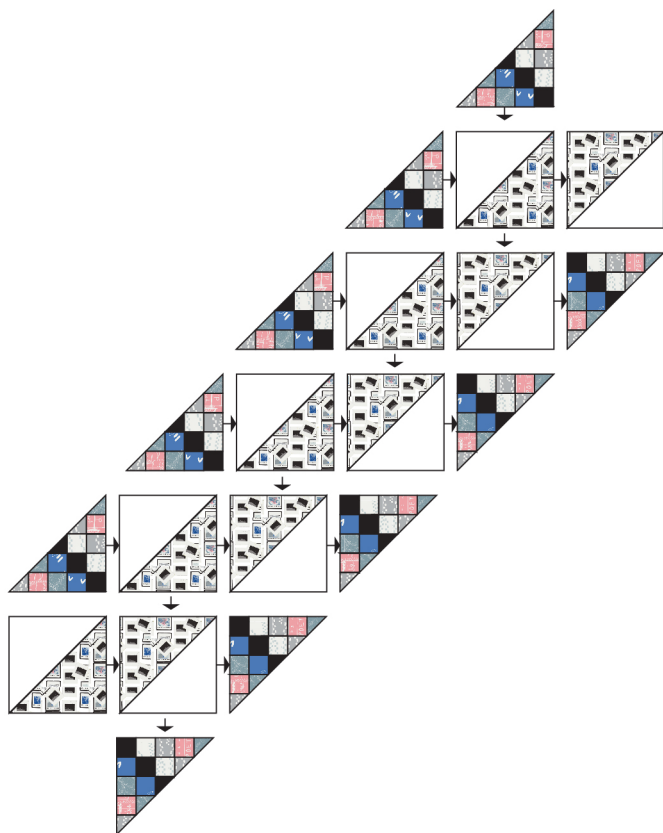


DIAGRAM 4

QUILT ASSEMBLY

Sew rights sides together.

- Cut backing fabric in half along the length so that you have two pieces half the WOF. Join the two pieces along the width and press.
- Place BACKING FABRIC on a large surface wrong side up. Stretch it with masking tape against that surface.
- Place BATTING on top of backing fabric.
- Place TOP on top of the batting with right side facing up. Smooth away wrinkles using your hands.
- Pin all layers together and baste with basting thread, using long stitches. You can also use safety pins to join the layers.
- Machine or hand quilt starting at the center and working towards the corners. Remember that quilting motifs are a matter of personal preference. Have fun choosing yours!
- After you finished, trim excess of any fabric or batting, squaring the quilt to proceed to bind it.

DIAGRAM B1 Stop stitching here

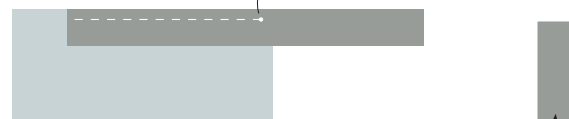


DIAGRAM B2



DIAGRAM B3

