

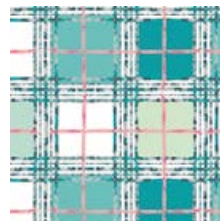
Victoria

AGF studio

CLUTCH DESIGNED BY AGF STUDIO



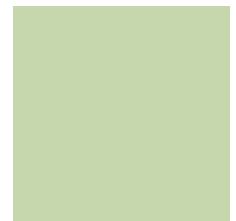
FABRICS DESIGNED BY *Katarina Rocella*



LAH-26811
TRELLIS PLAID FRESH



DEN-L-4000
SOFT SAND



PE-412
TENDER GREEN

CUTTING DIRECTIONS

1/4" seam allowances are included.

- Two (2) 4 1/4" x 9 1/2" rectangle from Fabric A
- Four (4) 6" x 9 1/2" rectangle from Fabric B
- Two (2) 9 1/2" x 13" rectangle from Fabric C

ADDITIONAL MATERIALS

- One (1) 6 1/2" square faux leather
- Two (2) 9 1/2" x 13" rectangle from batting
- Quilting Thread- Aurifil #1148-Medium Teal
- One (1) 12" All Purpose Zipper

FABRIC REQUIREMENTS

| | | |
|----------|-----------|-------------|
| Fabric A | LAH-26809 | Fat Eighth |
| Fabric B | LAH-26801 | Fat Quarter |
| Fabric C | LAH-16802 | Fat Quarter |

CONSTRUCTION

Read through all instructions before beginning.

Creating the Strap

- Take your 6 1/2" faux leather square and fold raw edges into the center of your square then fold in half again.
- Topstitch each side of your strap. (Diagram 1.1-1.3)

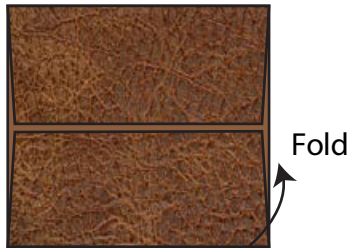


DIAGRAM 1.1



DIAGRAM 1.2

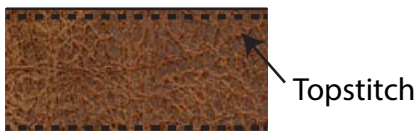


DIAGRAM 1.3

Assembling the Clutch

- Take a 4 1/4" x 9 1/2" rectangle from Fabric A and place strap in the middle and topstitch on each end of strap. (Diagram 2.1)
- Then sew a 6" x 9 1/2" rectangle from Fabric B to each side at 1/2". (Diagram 2.2)
- Topstitch each seam about 1/8"

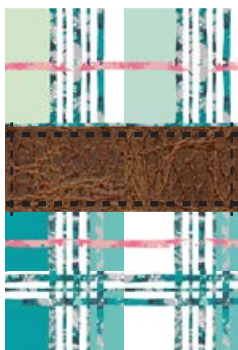


DIAGRAM 2.1

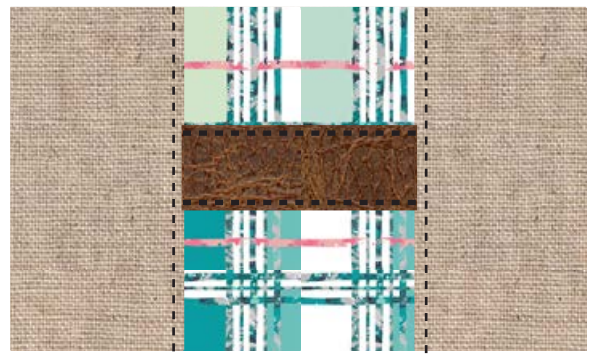


DIAGRAM 2.2

- Take a 4 1/4" x 9 1/2" rectangle from Fabric A and sew a 6" x 9 1/2" rectangle from Fabric B to each side. Sew at 1/2". (Diagram 3) Topstitch seams at 1/8". This piece will be your back clutch.

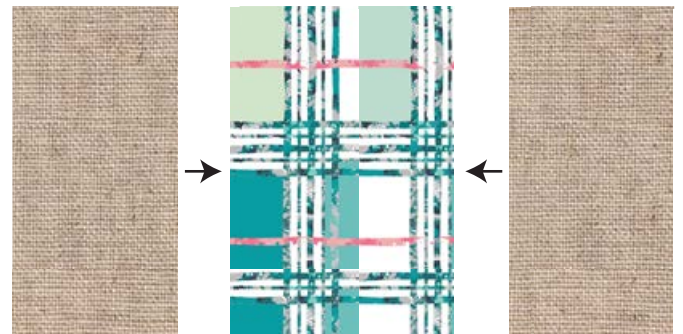


DIAGRAM 3

- Take your batting pieces and lay your front and back clutch on top and quilt as desired. This clutch was quilted with straight lines about 1/2" width apart.

Zipper Construction

Insert your zipper foot-

- Take lining and front clutch and sandwich them inbetween your 12" zipper.
- Using a zipper foot sew as close to the zipper teeth as possible.
- Sew the two pieces of fabric with right sides together with the zipper sandwiched inbetween the two pieces of fabric (Diagram 4.1 and 4.2)
- Press fabric away from zipper and edge stitch the seam allowance to the lining sewing as close the edge as possible..
- Repeat process for the other side of the zipper using your other lining piece and back clutch.

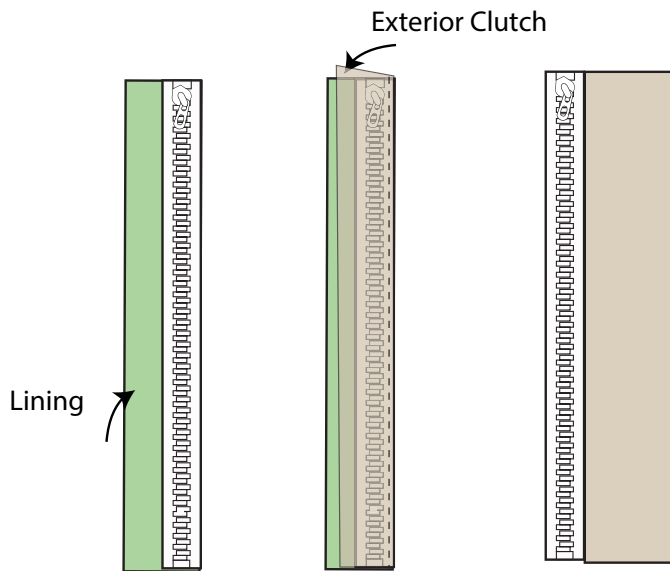


DIAGRAM 4.1

DIAGRAM 4.2

DIAGRAM 4.3

- Unzip zipper. Take the two fronts of the clutch and pin right sides together.
- Take the lining pieces and pin right sides together.
- Sew all the way around bag leaving a unsewn portion in the bottom of the lining of the clutch.
- Pull right side of the fabric through the unsewn portion. Hand stitch or machine stitch unsewn portion closed.

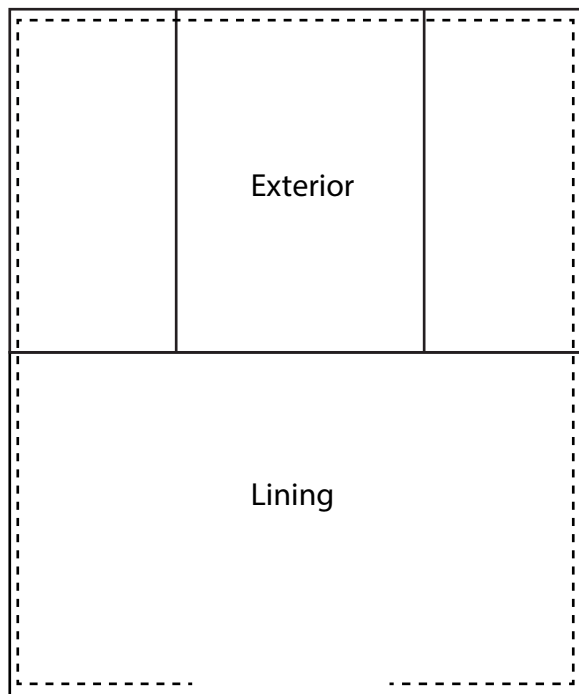


DIAGRAM 5

XX

*Congratulations
& enjoy*

XX



artgalleryfabrics.com

NOTE: While all possible care has been taken to ensure the accuracy of this pattern, We are not responsible for printing errors or the way in which individual work varies.

Please read instructions carefully before starting the construction of this quilt. If desired, wash and iron your fabrics before starting to cut.