

VELOCITY

AGF studio

HANDBAG DESIGNED BY AGF STUDIO

AVANTGARDE

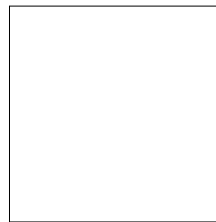
FABRICS DESIGNED BY *Katarina Rocella*



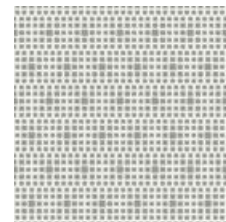
AVG-18900
STEPS ABOVE MOONBOW



PE-413
CAVIAR



PE-433
SNOW



SE-606
SHADOW

FABRIC REQUIREMENTS

Fabric A	AVG-18900	1 ½ yds.
Fabric B	PE-413	5/8 yd.
Fabric C	PE-433	½ yd.
Fabric D	SE-606	2/3 yd.
	Grey Faux Leather	

ADDITIONAL MATERIALS

- Two (2) 1" Circle Rings
- Two (2) 1" Swivel Clasps
- One (1) Magnetic Snap
- Ultra Firm Stabilizer
- Fusible Fleece
- Wonder Clips



