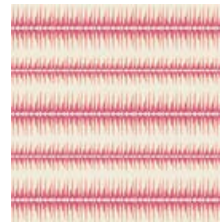


# Transporter AGFstudio

HANDBAG DESIGNED BY AGF STUDIO

## Succulence

FABRICS DESIGNED BY BONNIE CHRISTINE



SCC-98601  
TRAILING LAMENT



PE-436  
CRÈME DE LA CRÈME



FAUX LIGHT TAN LEATHER

### FABRIC REQUIREMENTS

Fabric A	SCC-98601	1 ¼ yd.
Fabric B	PE-436	1 yd.
Fabric C	Faux Leather	½ yd.

### CUTTING DIRECTIONS

½" seam allowances are included.

#### Pockets

- Four (4) Top Pockets from Fabric B
- Two (2) Top Pockets from Batting
- Four (4) Bottom Pockets from Fabric A
- Two (2) Bottom Pockets from Batting

Important- Cut 2 pockets with the pattern piece right side up and then flip it to cut 2 more pockets for the other side of your bag.

#### Exterior of Bag

- Two (2) Exterior Bag Right from Fabric A
- Two (2) Exterior Bag Left from Fabric A
- One (1) Base from Fabric A



- Two (2) 3"x 14" strips from Fabric **C**

### Lining

- Two (2) Top Lining from Fabric **A**
- Two (2) Bottom Lining from Fabric **B**
- One (1) Base from Fabric **B**

### Handles

- Two (2) 5" x 10" strips from Fabric **C**

### Pellon 926 Extra Firm Stabilizer

- Cut One (1) Exterior Bag Right and Left Pattern (Front Bag)
- For back of bag after all pieces are sewn use piece as a template to cut fusible for this piece.
- Cut One (1) Base

## CONSTRUCTION

*Sew all rights sides together with 1/2" seam allowance.*

### Sewing the Exterior

- Sew extra firm stabilizer to one exterior bag right, one exterior bag left, and the base pattern pieces in Fabric **A** at 1/4". (Diagram 1)

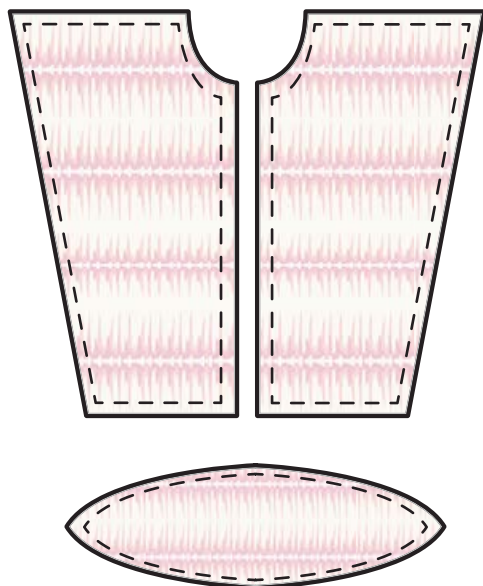


DIAGRAM 1

- Take one right and left top pocket piece and bottom pocket pieces. Place batting underneath pieces and stitch straight lines all the way down pieces about 1" apart. (Diagram 2.1 and 2.2)

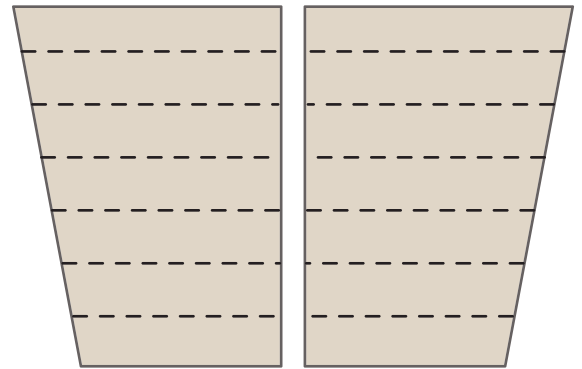


DIAGRAM 2.1

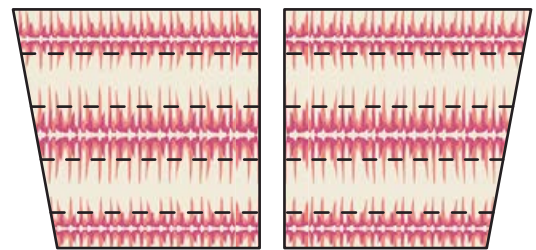


DIAGRAM 2.2

- Next take the remaining top and bottom pocket pieces and sew right sides together following Diagram 3.1 and 3.2.

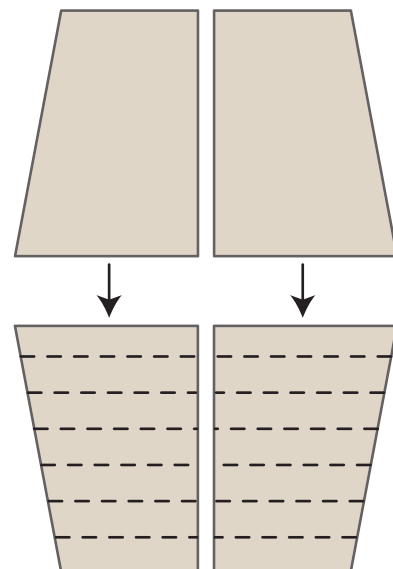


DIAGRAM 3.1

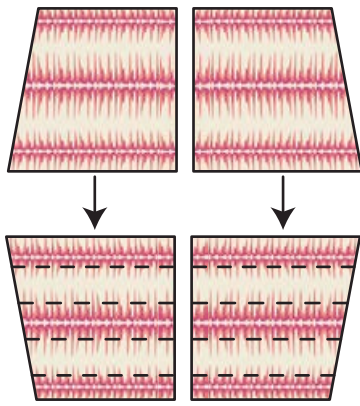


DIAGRAM 3.2

- Press seam flat and place both pockets on each side of your front pattern pieces from Diagram 1. Pin in place and sew a 3' x14' strip from Fabric C to each side of the front pattern pieces. (Diagram 4)

- Press seams in and topstitch down.

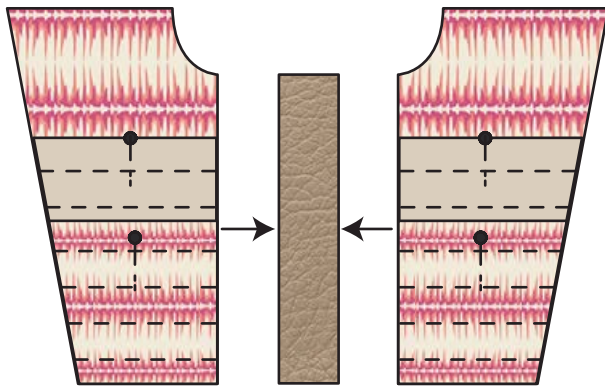


DIAGRAM 4

- Next sew your back exterior right and left bag pieces to the other 3' x 14' strip from Fabric C.
- Press seams in and topstitch down. (Diagram 5) Use as a template to cut out a piece of extra firm stabilizer and sew to the wrong side of your piece.

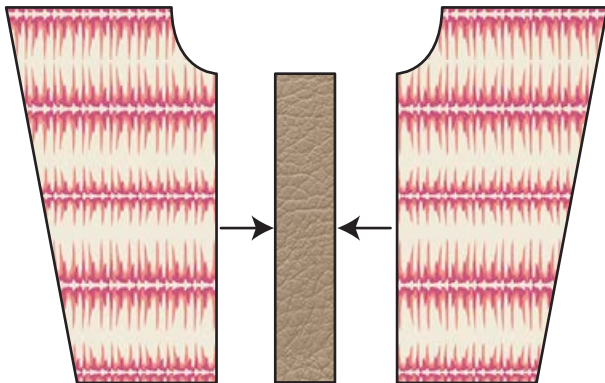


DIAGRAM 5

XXXXXXXXXXXXXXXXXXXXXXXXXXXXXXXX

- Place front and back bag pieces right side together and sew side seams together. (Diagram 6)

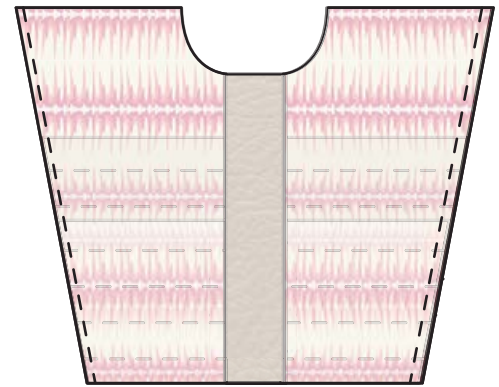


DIAGRAM 6

- Find the center of your front and back bag and mark with a pencil.
- Find the center of the base pattern piece cut in Fabric A.
- Line up marks on base to the front and back bag. Pin the base to the bottom of your bag and sew all the way around at 1/2'

*Sewing the Lining*

- Take the top lining piece from Fabric A and sew to the bottom lining piece from Fabric B. Repeat the same process for the other top and bottom lining pieces. (Diagram 7)
- Sew front and back lining pieces together at side seams.

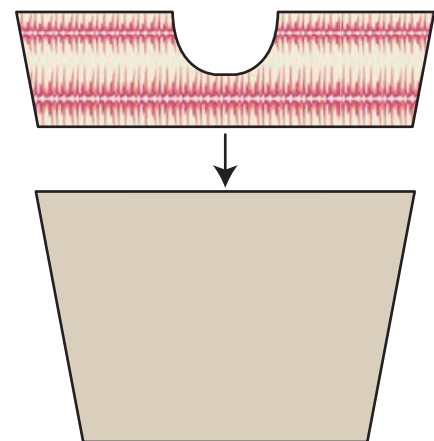


DIAGRAM 7

- Sew base pattern piece from Fabric C to the bottom of your lining piece but leave a unsewn portion big enough to pull the right side of your bag through.
- Place exterior of bag in lining with right sides touching. Line up side seams and pin pieces together and sew all the way around the top of the bag.
- Pull right side of bag through the unsewn portion in the lining.
- Press top of bag and topstitch all the way around.

Creating the Handles

- Take your 5' x 10' strips cut in Fabric C. Fold raw edges into the middle of your piece. Then fold in half. Sew as close to the edge as possible. (Diagram 8.1 and 8.2)

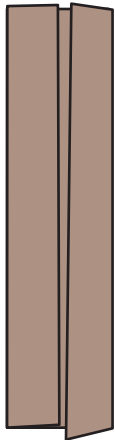


DIAGRAM 8.1



DIAGRAM 8.2

- To secure handles to each side of your bag fold under each end 1".
- Place at the top of your front and back bag and topstitch on the exterior of your bag a square with an X in the middle. (Diagram 9)

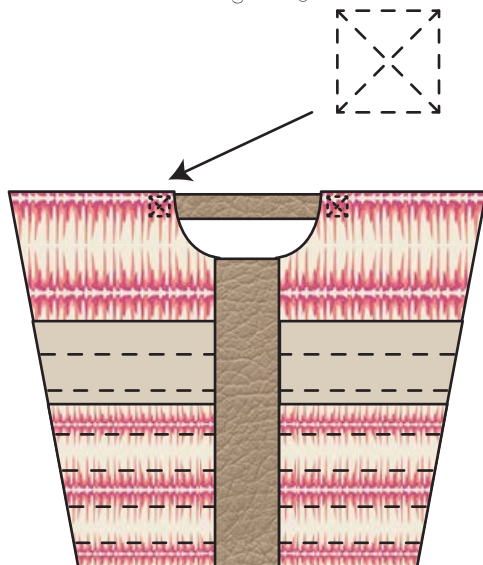


DIAGRAM 9



[artgalleryfabrics.com](http://artgalleryfabrics.com)

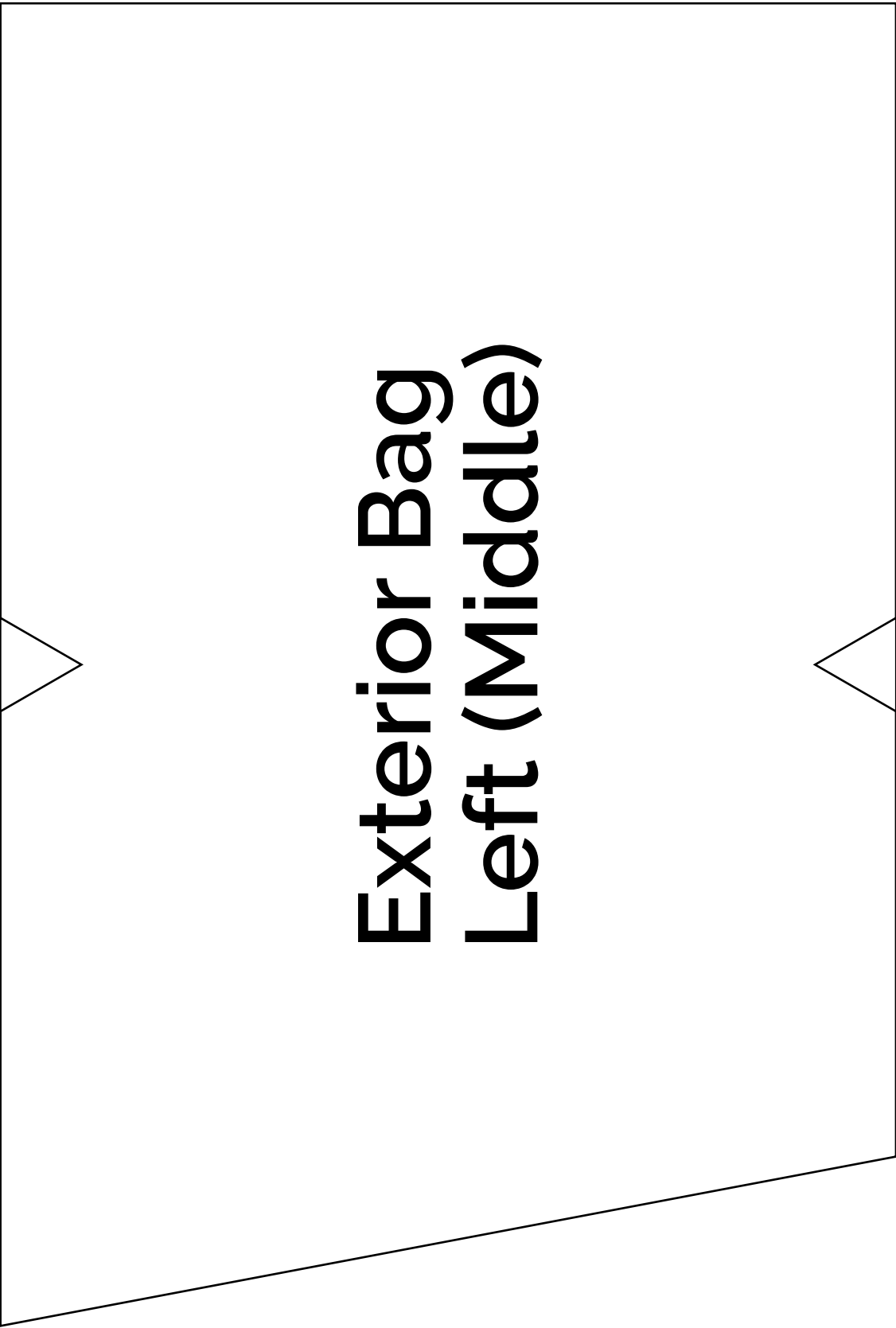
*NOTE: While all possible care has been taken to ensure the accuracy of this pattern, We are not responsible for printing errors or the way in which individual work varies. Please read instructions carefully before starting the construction of this quilt. If desired, wash and iron your fabrics before starting to cut.*

© 2015 Courtesy of Art Gallery Quilts LLC. All Rights Reserved.



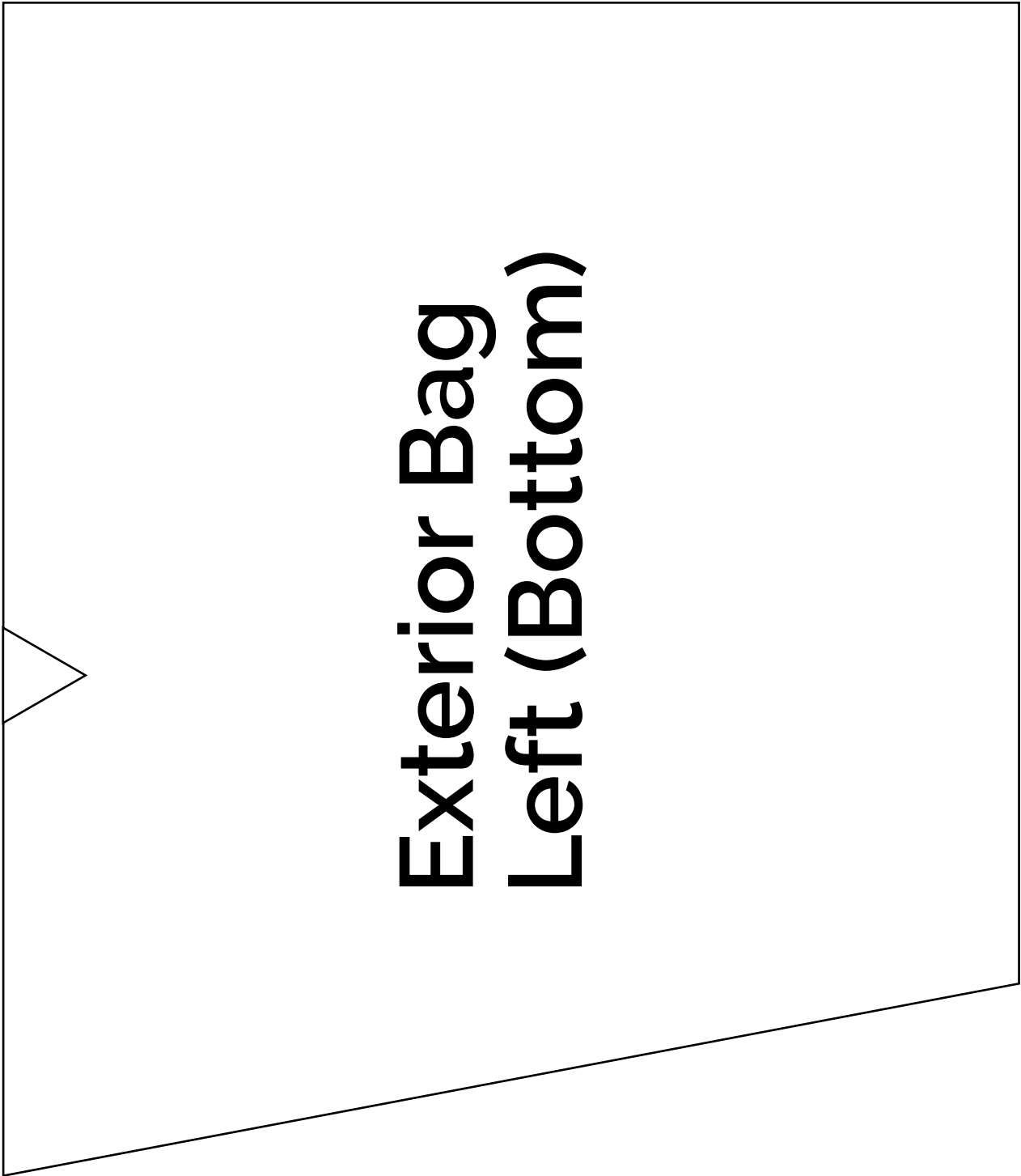
# Exterior Bag Left (Top)

Line up notches and tape pattern pieces together



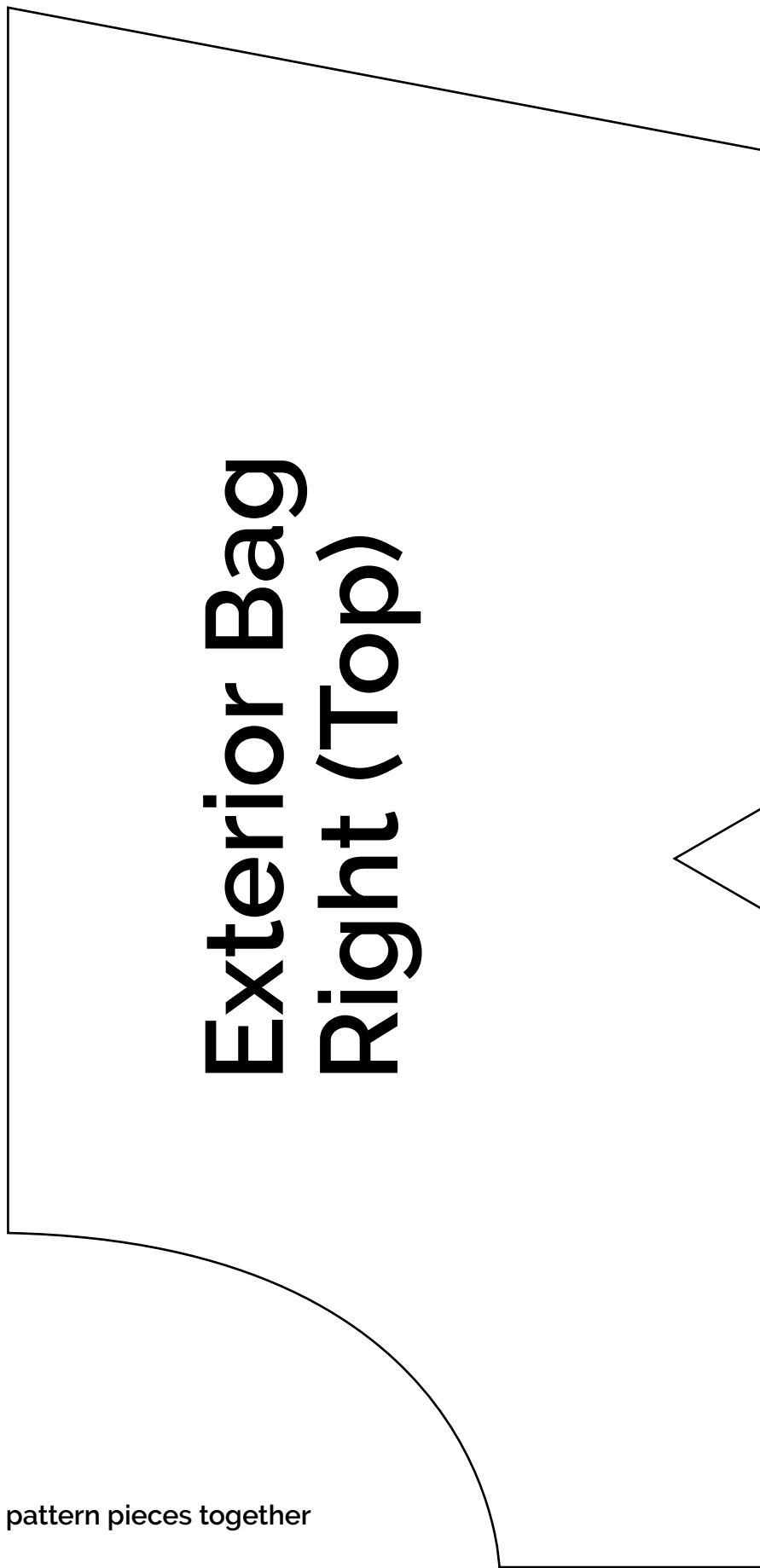
# Exterior Bag Left (Middle)

Line up notches and tape pattern pieces together



Line up notches and tape pattern pieces together

# Exterior Bag Right (Top)



Line up notches and tape pattern pieces together

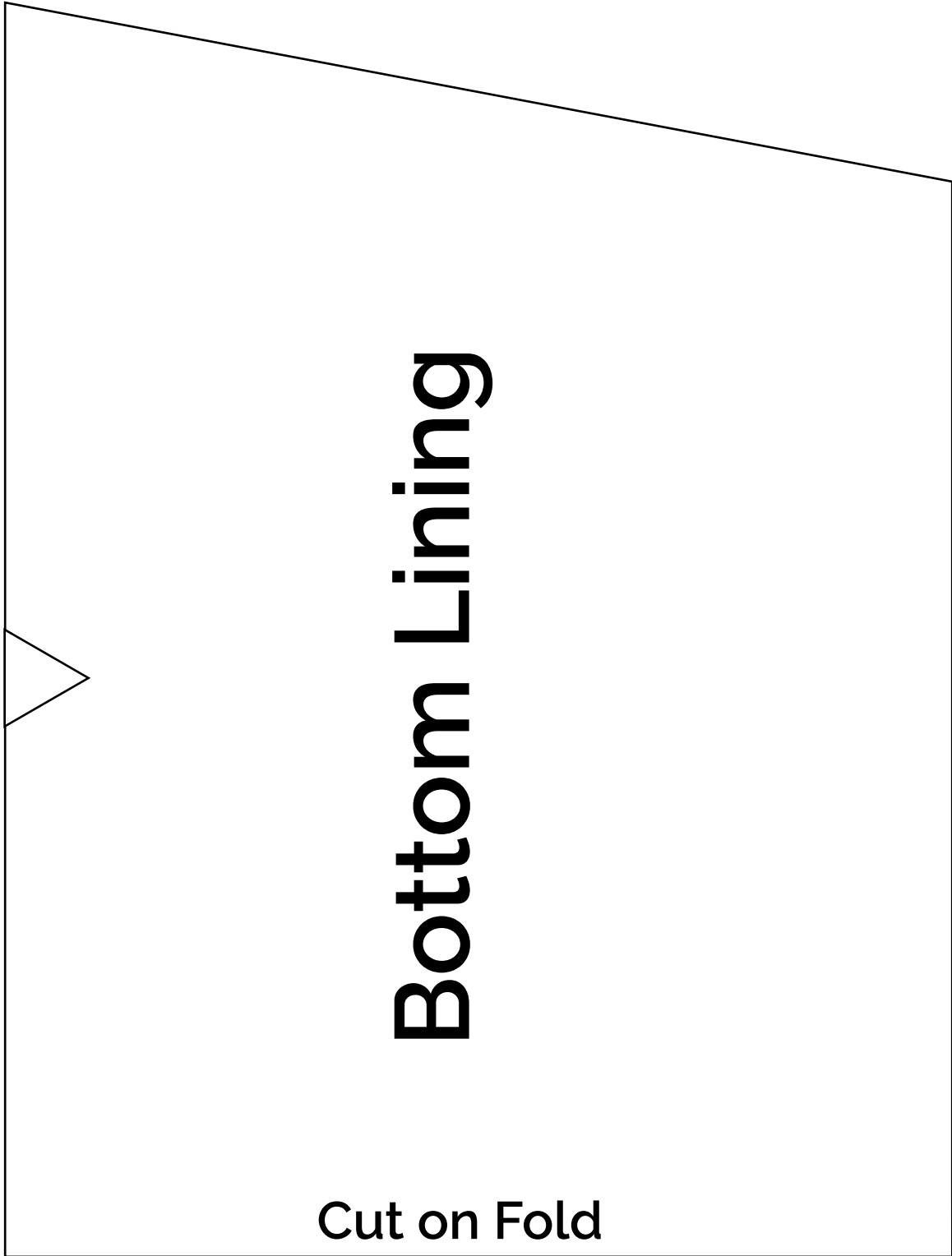


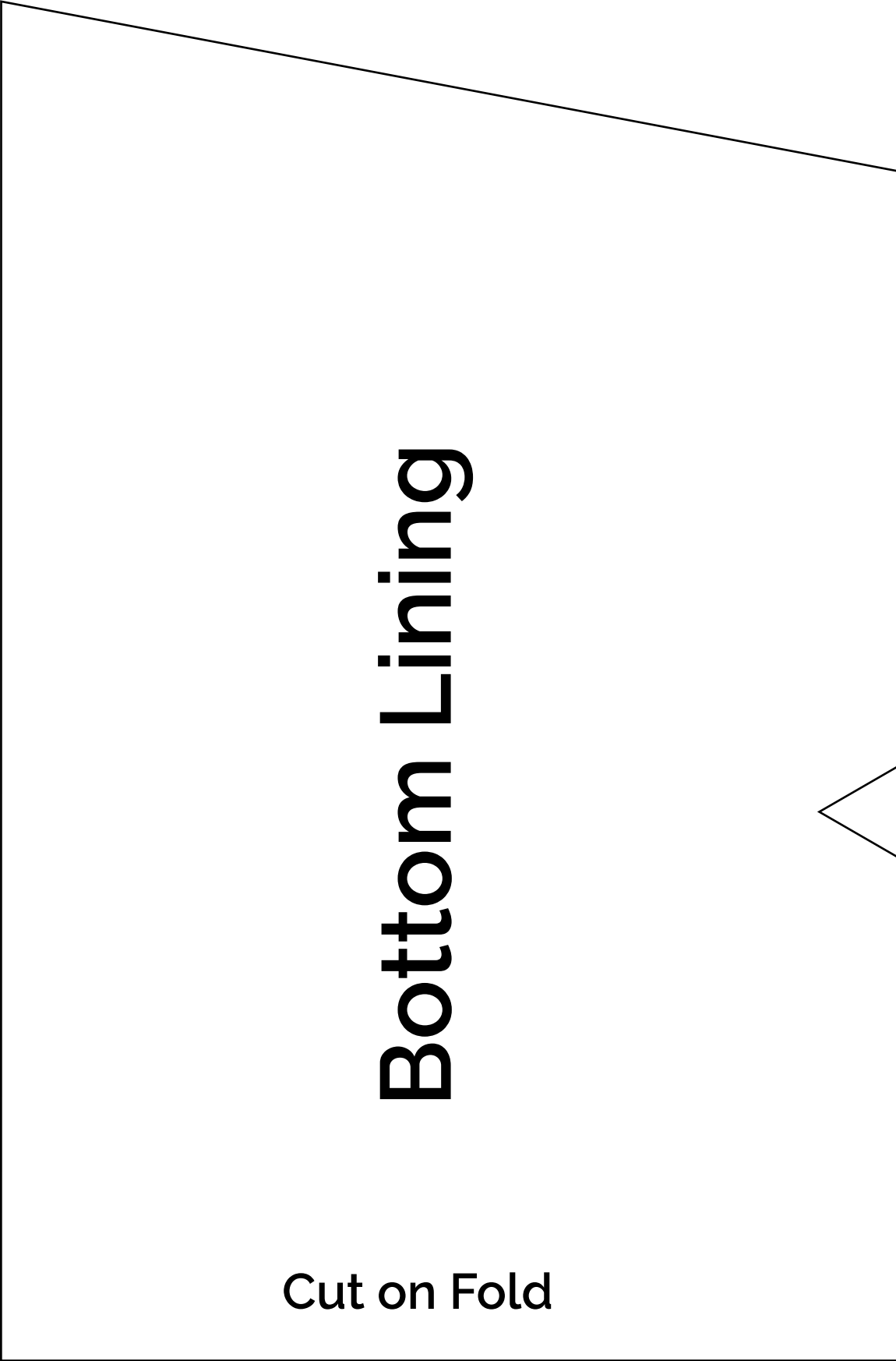


Line up notches and tape pattern pieces together



Line up notches and tape pattern pieces together



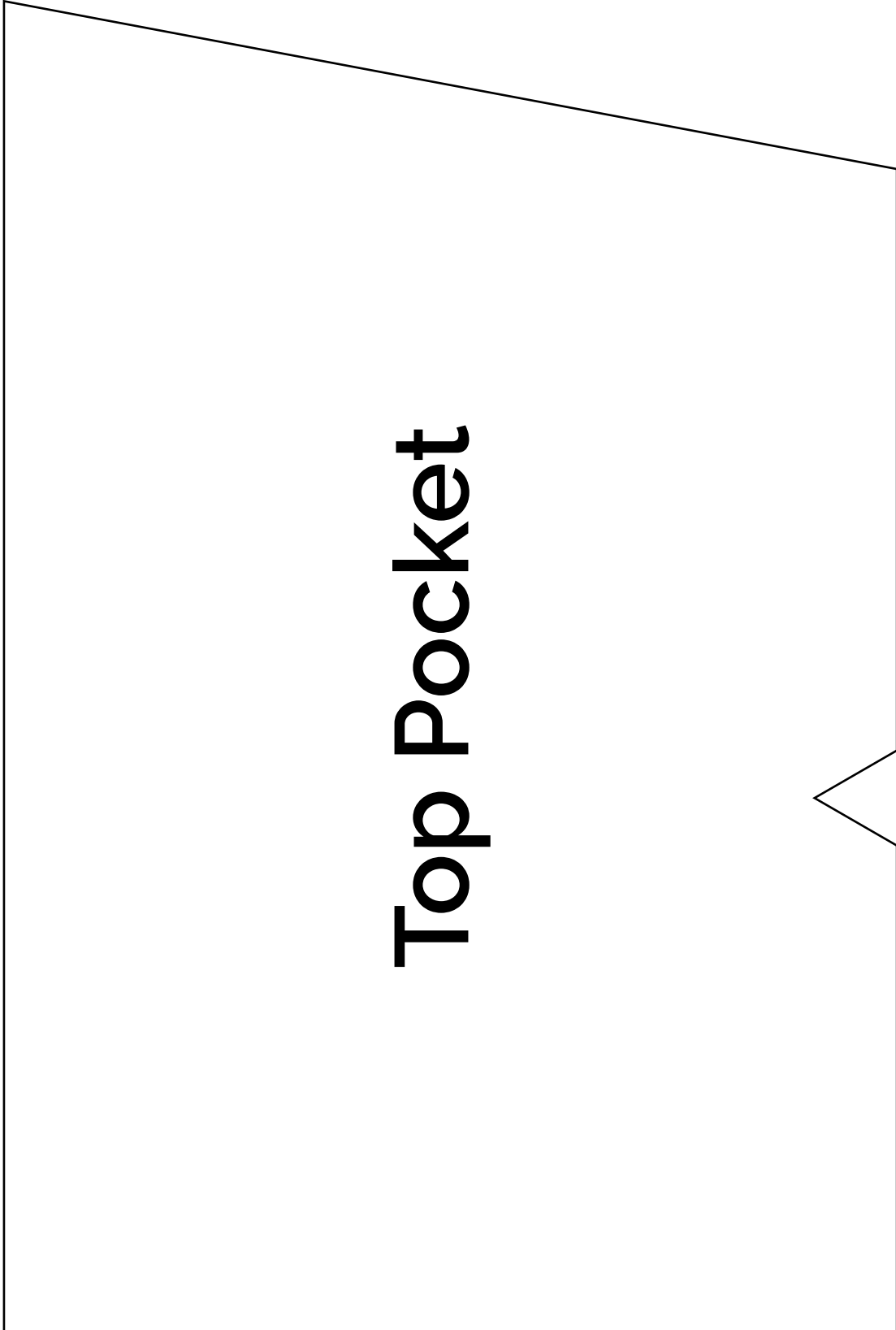


Cut on Fold

Line up notches and tape pattern pieces together

# Top Lining

Cut on Fold



**Top Pocket**

Line up notches and tape pattern pieces together



# Top Pocket

Line up notches and tape pattern pieces together

# Bottom Pocket



