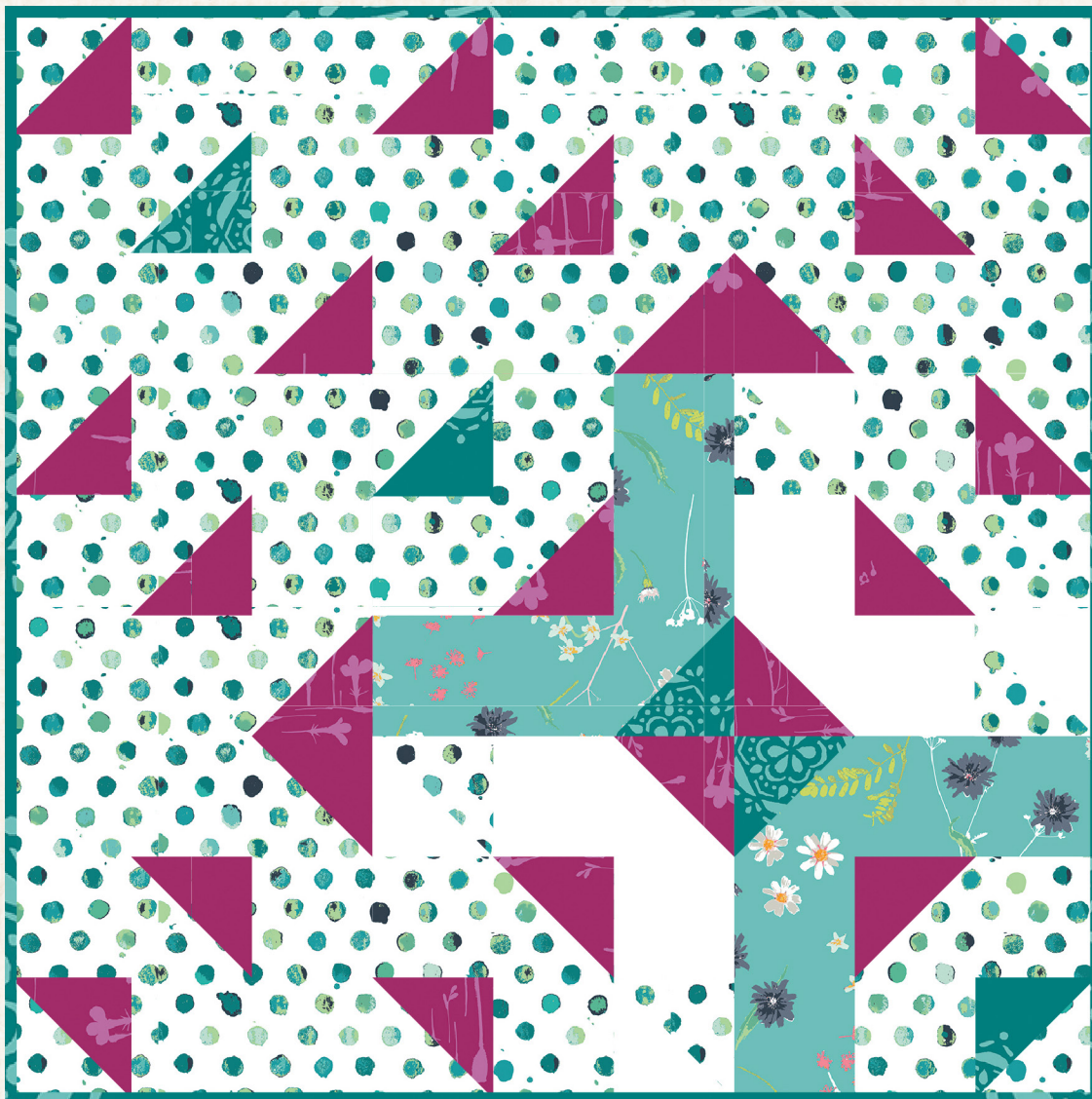


MINIQUILT DESIGNED BY AGF STUDIO



Terrace

MINIQUILT DESIGNED BY AGF STUDIO

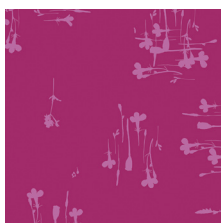


FABRICS DESIGNED BY KATARINA ROCCELLA

OPULENT



LAH-16800
MOTHER'S GARDEN LIGHT



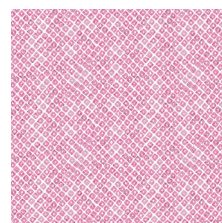
LAH-16801
SUNPRINT ORCHID



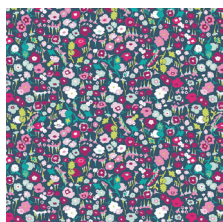
LAH-16802
AGED STROKES MATTE



LAH-16803
BLOSSOM SWALE DEPTH



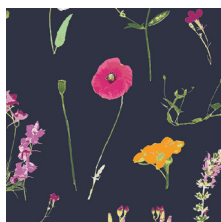
LAH-16804
SEEDS OF DALIA



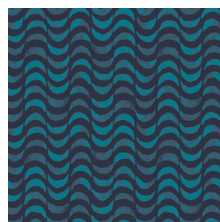
LAH-16807
PRETTY DISTY DREAM



LAH-16808
BEJEWELED SEAL INK



LAH-16809
PETAL PICKING DENSE



LAH-16810
GENTLE DRAFT MOON

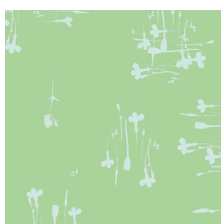


LAH-16812
FLOWERFUL DANDLE-PANEL

LUSH



LAH-26800
MOTHER'S GARDEN RICH



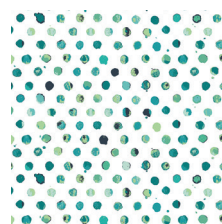
LAH-26801
SUNPRINT FERN



LAH-26802
AGED STROKES GLOSS



LAH-26803
BLOSSOM SWALE CALM



LAH-26805
DOTS TILE FRESCO



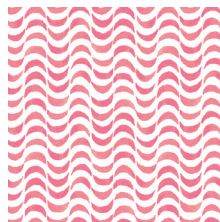
LAH-26806
FLOWERED MEDLEY



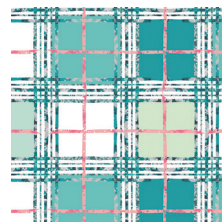
LAH-26808
BEJEWELED SEAL TEAL



LAH-26809
PETAL PICKING DANITY



LAH-26810
GENTLE DRAFT SUNRISE



LAH-26811
TRELLIS PLAID FRESH



FEEL THE DIFFERENCE © 2015 Courtesy of Art Gallery Quilts LLC. All Rights Reserved.

Terrace

FINISHED SIZE | 24 $\frac{3}{4}$ " x 24 $\frac{3}{4}$ "

FABRIC REQUIREMENTS

Fabric A	LAH-26805	$\frac{5}{8}$ yd.
Fabric B	LAH-16801	$\frac{1}{4}$ yd.
Fabric C	LAH-26808	$\frac{1}{4}$ yd.
Fabric D	LAH-26803	$\frac{1}{8}$ yd.
Fabric E	PE-433	$\frac{1}{8}$ yd.

BACKING FABRIC

LAH-26803 - 1 $\frac{1}{4}$ yds. (Suggested)

BINDING FABRIC

LAH-26808 (Fabric **C**) (included)

CUTTING DIRECTIONS

$\frac{1}{4}$ " seam allowances are included.
WOF means width of fabric.

Fabric **A**

Eighteen (18) 3 $\frac{1}{4}$ " x 3 $\frac{1}{4}$ " squares
Six (6) 6" x 3 $\frac{1}{4}$ " rectangles
Four (4) 3 $\frac{5}{8}$ " x 3 $\frac{5}{8}$ " squares
Three (3) 7 $\frac{1}{4}$ " x 7 $\frac{1}{4}$ " squares
Two (2) 6" x 6" squares

Fabric **B**

One (1) 3 $\frac{5}{8}$ " x 3 $\frac{5}{8}$ " square
Three (3) 7 $\frac{1}{4}$ " x 7 $\frac{1}{4}$ " squares

Fabric **C**

Three (3) 3 $\frac{5}{8}$ " x 3 $\frac{5}{8}$ " squares

Fabric **D**

Four (4) 6" x 3 $\frac{1}{4}$ " rectangles

Fabric **E**

Four (4) 3 $\frac{1}{4}$ " x 3 $\frac{1}{4}$ " squares
Three (3) 3 $\frac{5}{8}$ " x 3 $\frac{5}{8}$ " squares

CONSTRUCTION

Read through all instructions before beginning. Sew all rights sides together with $\frac{1}{4}$ " seam allowance unless otherwise stated.

- We will use two methods to make half square triangles (HST). The usual 2/time method and the 8/time method.

8 at a time Method (uses 7 $\frac{1}{4}$ " squares):

Place two squares right sides together, mark both diagonals, then mark stitching lines on either side of them at a scant $\frac{1}{4}$ ". Sew along stitching lines. Press, then make four cuts across the center: vertically, horizontally, and across both diagonals. Press open HST. (see Diagram 1)

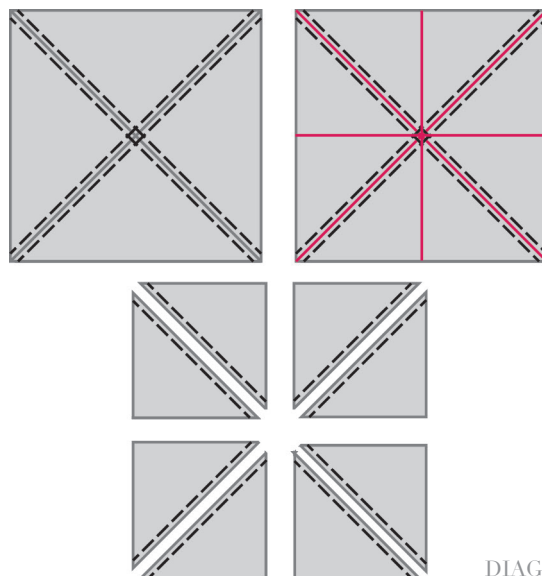


DIAGRAM 1

2 at a time Method (uses 3 $\frac{5}{8}$ " squares):

- To make the HST: Mark the diagonal, then mark your sewing lines $\frac{1}{4}$ " away from the diagonal. Sew on lines, cut on the diagonal and press both open.

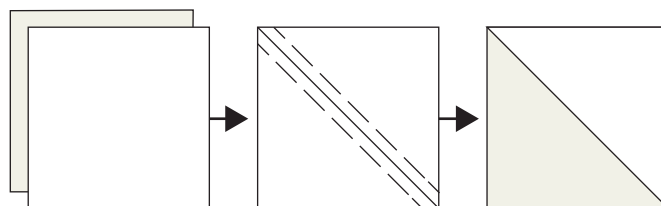


DIAGRAM 2

HST Quantities:

22 Fabric **A/B** HST
(8/time) x 3 times

2 Fabric **B/E** HST
(2/time) x 1 time

4 Fabric **A/E** HST
(8/time) x 2 times

HST Quantities, cont.:

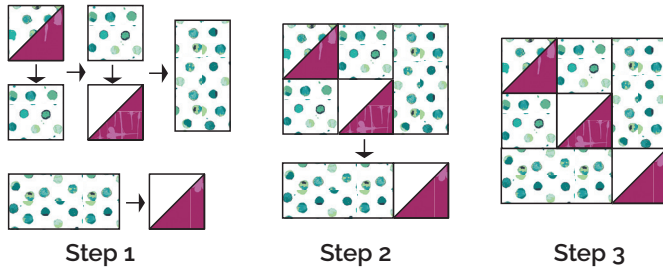
3 Fabric **A/C** HST
(2/time) x 2 times

2 Fabric **C/D** HST
(2/time) x 1 time

• Block A You will need:

One **A/B** HST
Two **A** 3 1/4" squares
Two **B/E** HST
Two **A** 6" x 3 1/4" rectangles

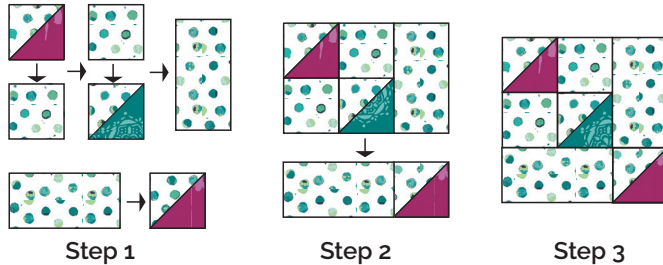
• Assemble according to diagram below. (make 4)



• Block B You will need:

Two **A/B** HST
Two **A** 3 1/4" squares
One **A/C** HST
Two **A** 6" x 3 1/4" rectangles

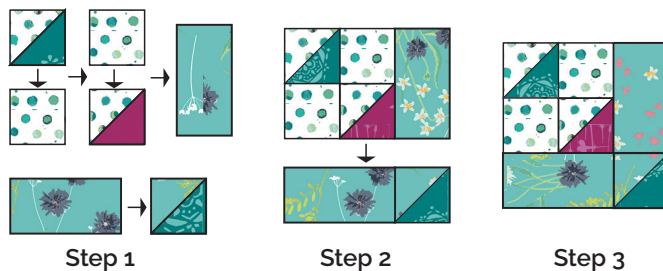
• Assemble according to diagram below. (make 1)



• Block C You will need:

One **A/C** HST
Two **A** 3 1/4" squares
One **A/B** HST
One **C/D** HST
Two **D** 6" x 3 1/4" rectangles

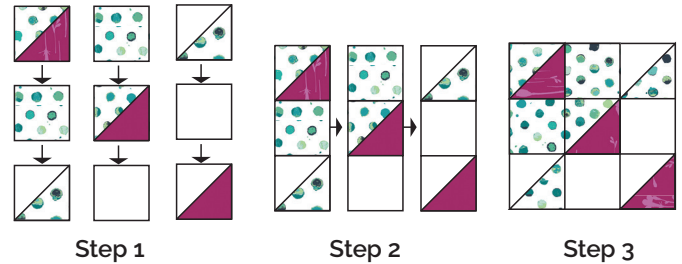
• Assemble according to diagram below. (make 2)



• Block A You will need:

Two **A/B** HST
Two **A** 3 1/4" squares
Two **A/E** HST
Two **E** 3 1/4" squares
One **B/E** HST

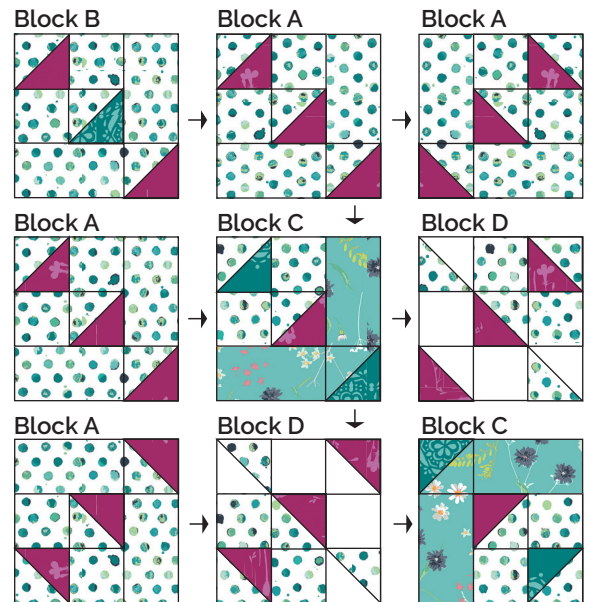
• Assemble according to diagram below. (make 2)



ASSEMBLING THE TOP

Sew all rights sides together with 1/4" seam allowance. Press open.

- Sew blocks together according to the diagram below, and referring to the cover illustration.



MINI QUILT ASSEMBLY

Sew rights sides together.

- Place BACKING FABRIC on a large surface wrong side up. Stretch it with masking tape against that surface.
- Place BATTING on top of backing fabric.
- Place TOP on top of the batting with right side facing up. Smooth away wrinkles using your hands.

- Pin all layers together and baste with basting thread, using long stitches. You can also use safety pins to join the layers.
- Machine or hand quilt starting at the center and working towards the corners. Remember that quilting motifs are a matter of personal preference. Have fun choosing yours!
- After you finish, trim excess of any fabric or batting, squaring the quilt to proceed to bind it.

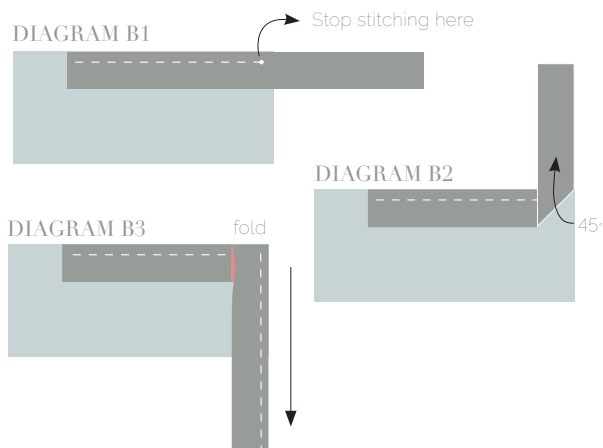
BINDING

Sew rights sides together.

- Cut enough strips $1\frac{1}{2}$ ' wide by the width of the fabric **E** to make a final strip 107' long. Start sewing the binding strip in the middle of one of the sides of the quilt, placing the strip right side down and leaving an approximated 5' tail. Sew with $\frac{1}{4}$ ' seam allowance (using straight stitch), aligning the strip's raw edge with the quilt top's raw edge.
- Stop stitching $\frac{1}{4}$ ' before the edge of the quilt (**DIAGRAM B 1**). Clip the threads. Remove the quilt from under the machine presser foot. Fold the strip in a motion of 45° and upward, pressing with your fingers (**DIAGRAM B2**). Hold this fold with your finger, bring the strip down in line with the next edge, making a horizontal fold that aligns with the top edge of the quilt (**DIAGRAM B3**). Start sewing at $\frac{1}{4}$ ' of the border, stitching all the layers. Do the same in the four corners of the quilt.



- Stop stitching before you reach the last 5 or 6 inches. Cut the threads and remove the quilt from under the machine presser foot. Lay the loose ends of the binding flat along the quilt edge, folding the ends back on themselves where they meet. Press them together to form a crease. Using this crease as the stitching line, sew the two open ends of the binding with right sides together (you can help yourself marking with a pencil if the crease is difficult to see).
- Trim seam to $\frac{1}{4}$ ' and press open. Complete the sewing. Turn binding to back of the quilt, turn raw edge inside and stitch by hand using blind stitch.



NOTE: While all possible care has been taken to ensure the accuracy of this pattern, We are not responsible for printing errors or the way in which individual work varies. Please read instructions carefully before starting the construction of this quilt. If desired, wash and iron your fabrics before starting to cut.