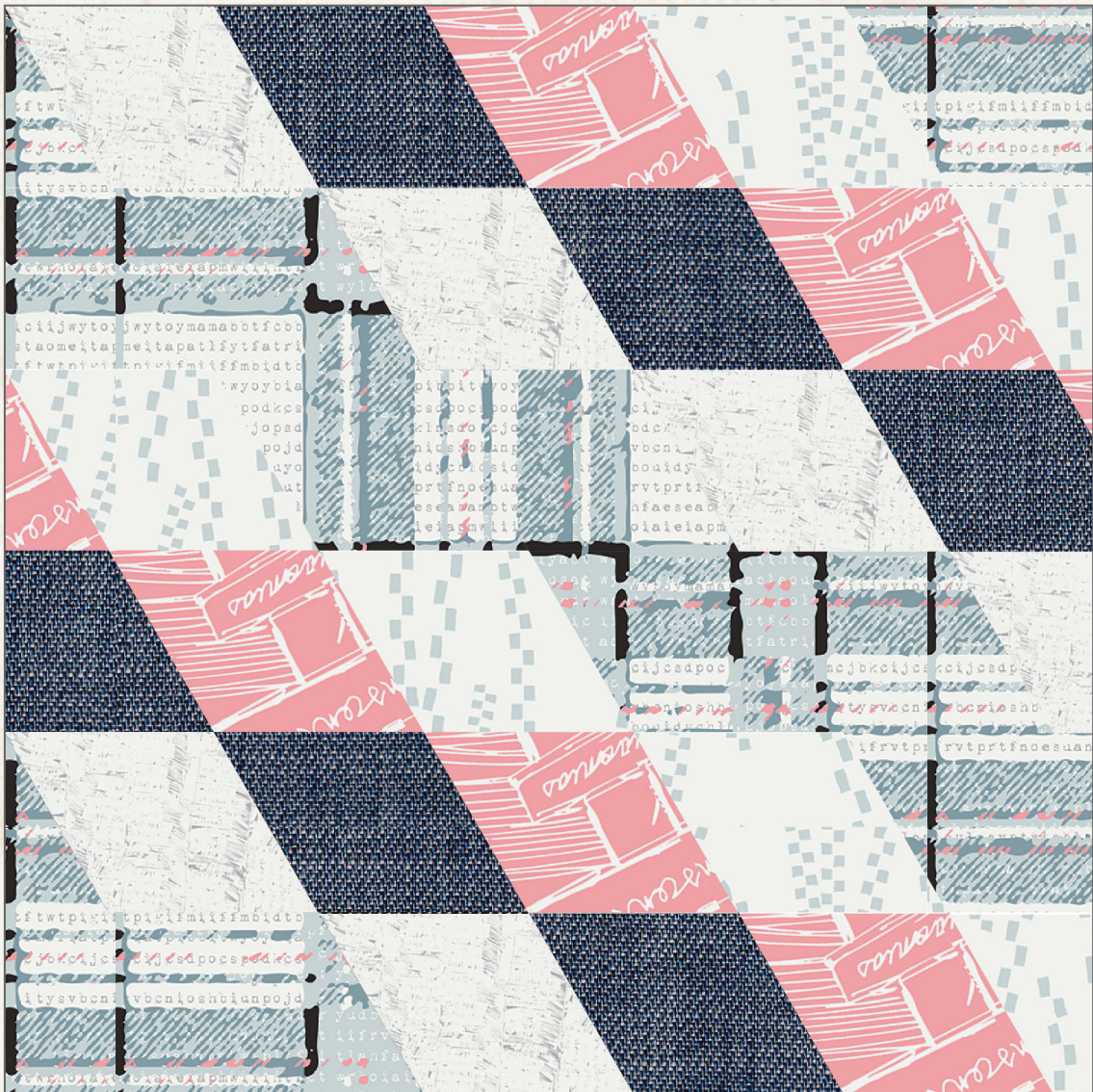


featuring PASTEL THRIFT COLLECTION BY AGF STUDIO

Harlequin

AGFstudio

PILLOW DESIGNED BY AGF STUDIO



FREE PATTERN



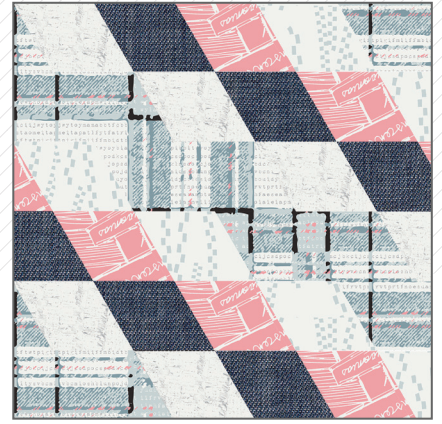
Harlequin

AGFstudio

PILLOW DESIGNED BY AGF STUDIO

PASTEL
THRIFT

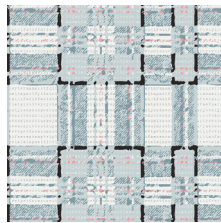
FABRICS DESIGNED BY AGF STUDIO



CHRYSTAL BALL



PST - 75500
PORCELAINS PRISM



PST - 75501
TYPE-PLAID ALLUSION



PST - 75502
MAGIC POTION SCENT



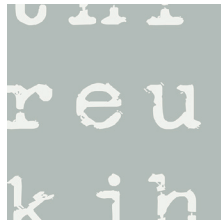
PST - 75504
FORESHADOWING SPELL



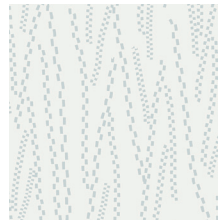
PST - 75505
GRAMOFLOLA LULLABIE



PST - 75506
BIBLIOMANIA ANTIDOTE



PST - 75507
REMINDER ALLOY



PST - 75508
SHREDDED CHESS FAINT



PST - 75509
ANALOG III CRUX

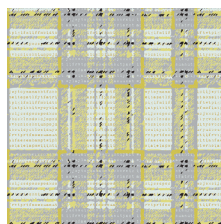


PST - 75510
STILL PERSPECTIVE

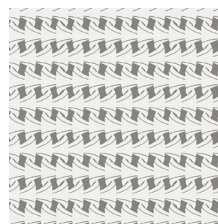
ROVER CURIO



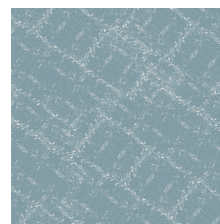
PST - 85500
PORCELAINS BAROQUE



PST - 85501
TYPED-PLAID ABSTRUSITY



PST - 85503
ENCOUNTERED PAVILLONS



PST - 85504
FORESHADOWING ADAGE



PST - 85505
GRAMOFLOLA OPERA



PST - 85506
BIBLIOMANIA CANDELIGHT



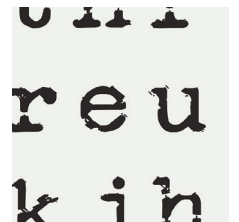
PST - 85507
REMINDER HIDDEN



PST - 85508
SHREDDED CHESS LITHO



PST - 85509
ANALOG III PIXY



PST - 85511
REMINDER BOLD



FEEL THE DIFFERENCE © 2016 Courtesy of Art Gallery Quilts LLC. All Rights Reserved.

Harlequin

FINISHED SIZE | 18' x 18'

FABRIC REQUIREMENTS

| | | |
|----------|------------|-------------------|
| Fabric A | PST-75504 | $\frac{5}{8}$ yd. |
| Fabric B | PST-75501 | $\frac{1}{4}$ yd. |
| Fabric C | PST-75508 | $\frac{1}{8}$ yd. |
| Fabric D | PST-75506 | $\frac{1}{8}$ yd. |
| Fabric E | DEN-S-2203 | $\frac{1}{8}$ yd. |

CUTTING DIRECTIONS

$\frac{1}{4}$ " seam allowances are included.
WOF means width of fabric.

- One (1) $3\frac{1}{2}'$ x WOF strip from fabric A
- Two (2) $3\frac{1}{2}'$ x WOF strips from fabric B
- One (1) $3\frac{1}{2}'$ x WOF strip from fabric C
- One (1) $3\frac{1}{2}'$ x WOF strip from fabric D
- One (1) $3\frac{1}{2}'$ x WOF strip from fabric E
- One (1) $14' \times 18\frac{1}{2}'$ rectangle from fabric A
- One (1) $8' \times 18\frac{1}{2}'$ rectangle from fabric A

CONSTRUCTION

Sew all rights sides together with $\frac{1}{4}$ " seam allowance.

- On table place the strips together in the order: A > B > B > C > D > E.
- Now, move the edge of strip B 2' to the right of the end of strip A. Repeat with each strip, so that the end of strips looks like a 'staircase,' with each 'stair' 2' wide. Refer to diagram 1.
- Pin and sew together. Press
- Place your ruler at a 60° angle and cross-cut 9 segments measuring $3\frac{1}{2}'$ wide. Refer to Diagram 1.

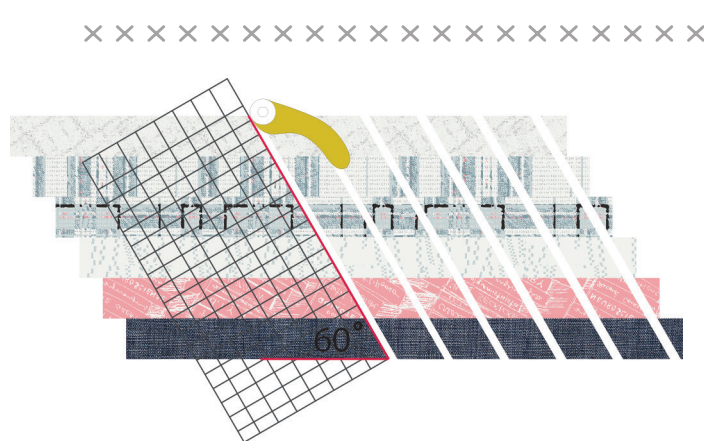


DIAGRAM 1

- We will need to seam-rip apart some rows and reassemble them.
- Leave rows 1, 4, 8 & 9 as is
- Row 2: separate between Fabrics B & B, reassemble according to the diagram.
- Row 3: separate between Fabrics A & B, reassemble according to the diagram.
- Row 5: separate between Fabrics D & E, reassemble according to the diagram.
- Row 6: separate between Fabrics C & D, reassemble according to the diagram.
- Row 2: separate between Fabrics B & C, reassemble according to the diagram.
- Refer to Diagram 2.

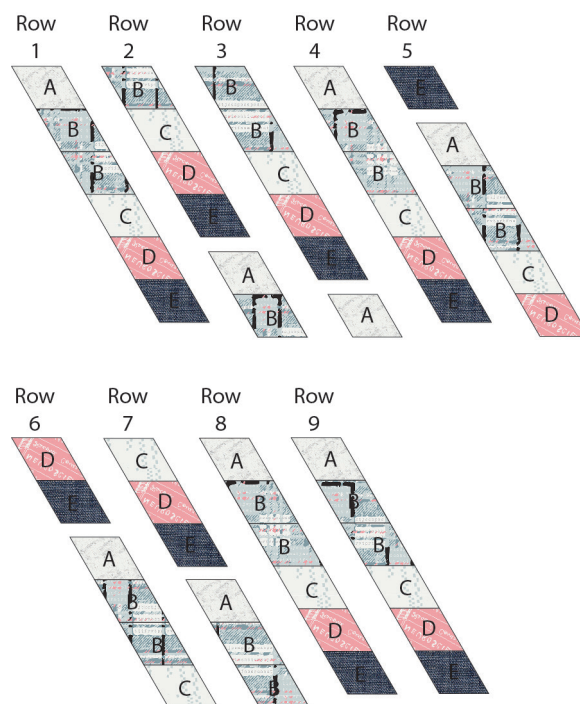
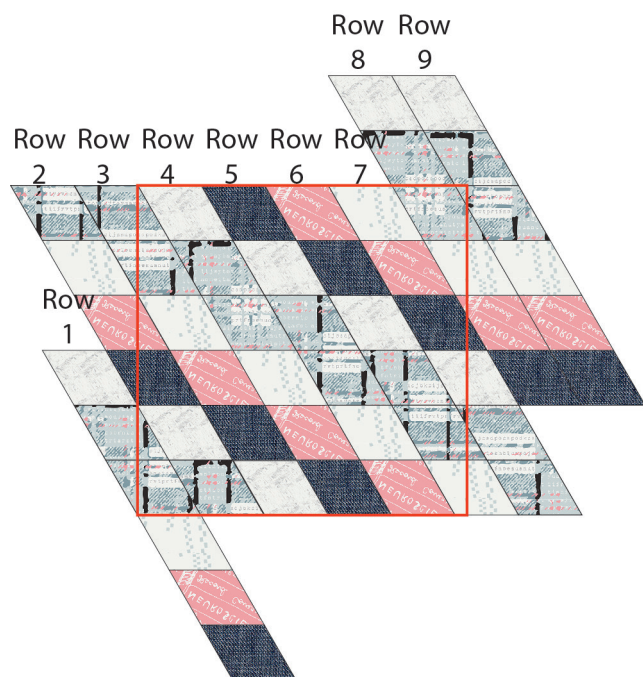


DIAGRAM 2

- Now, gather your rows and pin them together so that you can see the diagonal movement of the colors. Refer to Diagram 3 for how to pin each row together.
- Sew the rows together and press.
- Now you will trim the excess fabric away from your 18 ½' x 18 ½' pillow top.
- Trim lines are outlined in red in Diagram 3.



NOTE: While all possible care has been taken to ensure the accuracy of this pattern, We are not responsible for printing errors or the way in which individual work varies. Please read instructions carefully before starting the construction of this quilt. If desired, wash and iron your fabrics before starting to cut.

- Cut out a piece of batting 20' x 20', smooth fabric top over it and pin in place.
- Choose your quilting design. We played with the diamond motif and chose to highlight that aspect with our quilting.

ASSEMBLY

Sew rights sides together.

- This pillow has an envelope style back.
- On the 18 ½' side of one of the large Fabric A rectangles, press back ¼', then press another ½' and top stitch. Repeat on the other Fabric A rectangle.
- Lay your pillow top right side facing up and layer the back pieces on top, right sides facing down. Make sure the hemmed edges are overlapping each other and match the top and back edges together.
- Pin and sew together.
- Flip right side out, making sure the corners are turned out nicely and stuff with your 18' pillow form.
- Congrats! Time to snuggle up with your new pillow!

