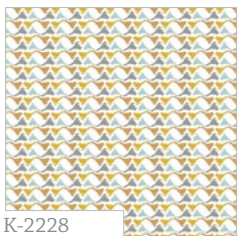


Handkerchief Skirt

Featuring

Indelible Collection
by KATARINA ROCCELLA



K-2228
Birdstencil AM

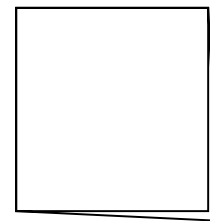
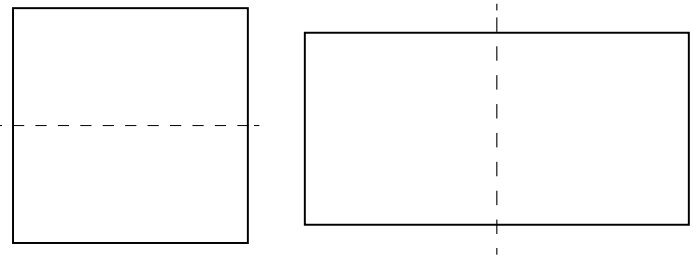
MATERIALS

- » 2 YD of ID-2228
- » Tape measure
- » Tailors chalk

CUTTING DIRECTIONS

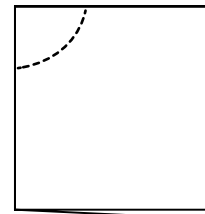
- Roughly 2 yds of fabric to create the handkerchief skirt.
- All you need is your waist measurement and divide it by 4 .
- Pick a desired length.
- Fold fabric in half once and then fold it again.

DIAGRAM 1



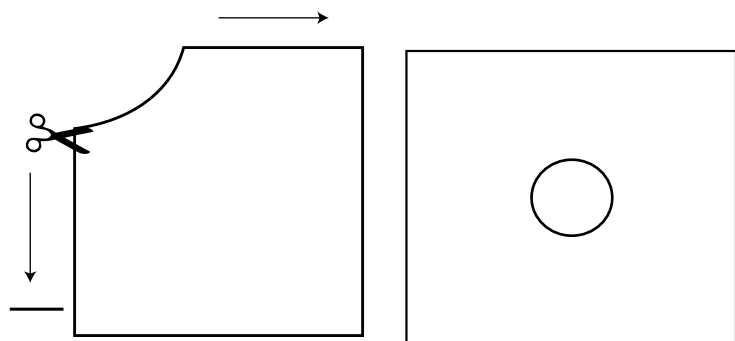
- Take a Tape measurer and hold it at the folded corner with one hand and with the other move from corner to corner.
- For this step use the measurement of your waist divided by 4 (Example: Size 26" waist divided by 4 = 6.5)
- Mark with tailor chalk where you are going to cut.

DIAGRAM 2



- Cut the corner away.
- Now measure the length of your skirt.
- To create a handkerchief skirt you need a perfect square. Make sure all sides of your skirt are the same length.
- Unfold the fabric, you should have a square with a circle in the middle. (DIAGRAM 3)

DIAGRAM 3

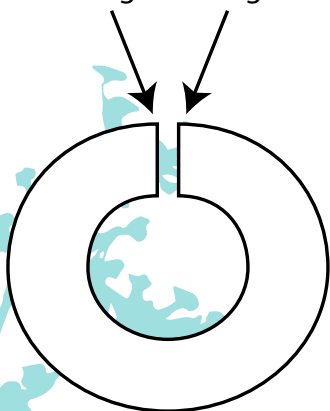


SKIRT CONSTRUCTION

- To create the waist band measure your waist and minus two inches depending upon the stretch of your fabric.
- Make your waist band as wide as you desire. Keep in mind your seam allowance and that you are going to fold that rectangle in half so double the width.
- I want my waist band to be 4 inches so I add 1/4 seam allowance which is 4 1/4. Then I double it, which is 8 1/2. Sew the short sides of the waist band together.

DIAGRAM 4

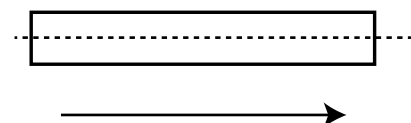
Sew wrong sides together



- Fold the waist and in half and pin to waist of skirt.
- Serge or zigzag stitch waist band to skirt.
- Feel free to finish the hem with a pearl edge, cover-stitch or leave it raw.

DIAGRAM 5

Fold in half sew to skirt waist



Feel the difference

For more free patterns visit:

artgalleryfabrics.com

NOTE: While all possible care has been taken to ensure the accuracy of this pattern, we are not responsible for printing errors or the way in which individual work varies. Please read instructions carefully before starting the construction of this quilt. If desired, wash and iron your fabrics before starting to cut.

© 2014 Courtesy of Art Gallery Quilts LLC.
All Rights Reserved.