



CHANGING GEARS

Fold Open Clutch

Featuring

CLETA

(short for bicicleta; meaning bike)

Collection By

AGF studio



Inside



Front(Unfolded)



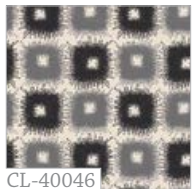
CL-40048
Handlebar Tricks Gris



CL-40050
Carved Gear



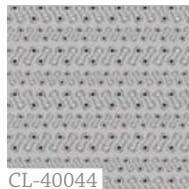
CL-40045
Translate Bike Nero



CL-40046
Canopy Shadows



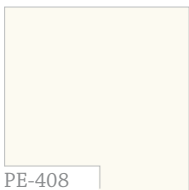
CL-40047
Tire Buds Lumi



CL-40044
Linked with Wind



PE-430
Moonstone



PE-408
White Linen

FABRIC REQUIREMENTS

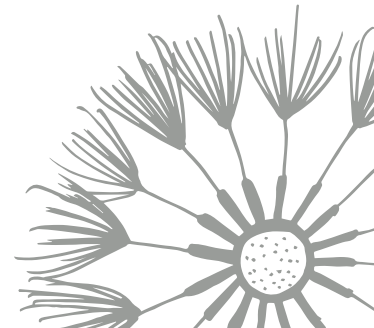
Fabric A	CL- 40048	1/4 yd.
Fabric B	CL- 40050	1/8 yd.
Fabric C	CL- 40045	1/4 yd.
Fabric D	CL- 40046	1/8 yd.
Fabric E	CL- 40047	1/8 yd.
Fabric F	CL-40044	1/4 yd.
Fabric G	PE- 430	1/4 yd.
Fabric H	PE- 408	1/8 yd.

MATERIALS NEEDED:

- 10" Zipper All Purpose Zipper
- Medium Weight Fusible

CUTTING DIRECTIONS

- Two (2) 2 1/2" x 8 1/2" rectangles from Fabric A
- One (1) 6 1/2" x 4" rectangle from Fabric B
- One (1) 10 1/2" x 5 1/2" rectangle from Fabric C
- One (1) 10 1/2" x 4" rectangle from Fabric D
- Two (2) 10 1/2" x 3" rectangle from Fabric E
- Two (2) 3"x 5 1/2" rectangle from Fabric F
- One (1) 10 1/2" x 5 1/2" rectangle from Fabric G
- Two (2) 2 1/2" x 4" rectangles from Fabric G
- Two (2) 5" x 5 1/2" rectangle from Fabric H
- One (1) 6 1/2" x 8 1/2" rectangle from Fabric H
- One (1) 10 1/2" x 5 1/2" rectangle from Fabric H
- Two (2) 10 1/2" x 3" rectangle from Fabric H
- One (1) 10" x 15" fusible



CLUTCH CONSTRUCTION

Sew all rights sides together with 1/4" seam allowance.

- Sew one 2 1/2" x 4" rectangle from fabric G to 6 1/2" x 4" from fabric B. Sew this piece to the other 2 1/2" x 4" rectangle from fabric G.



Figure 1

- Sew one 2 1/2" x 8 1/2" rectangle from fabric A to the 6 1/2" x 8 1/2" rectangle from fabric H. Sew this piece to the other 2 1/2" x 8 1/2" rectangle from fabric A.

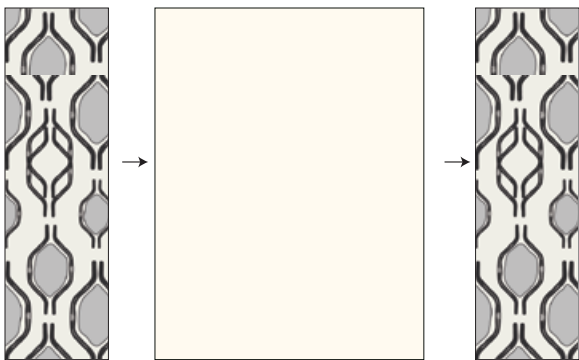


Figure 2

- Sew the piece you created in Figure 1 and 2 to 10 1/2" x 5 1/2" rectangle from fabric C.

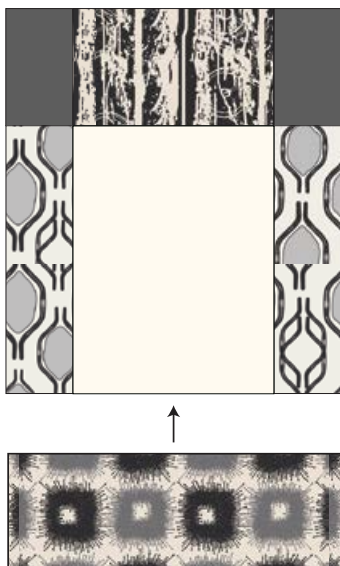


Figure 3

- Sew two 5" x 5 1/2" rectangles from fabric H, right sides together. Follow Figure 4a.
- Fold piece in half with wrong sides facing each other and press.
- Repeat same process with 3" x 5 1/2" rectangles from fabric F.



Figure 4a



Sew

Figure 4b

- Stack the piece you made in Figure 4a and place on 10 1/2" x 5 1/2" rectangle from fabric G. Stack the piece you made in figure 4b on top. Sew a line straight down the middle of the stack.

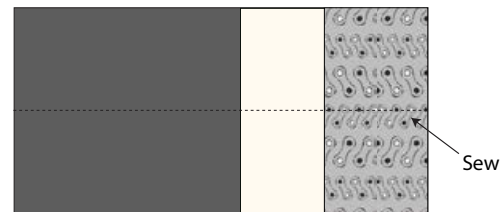


Figure 5

- Take one 10 1/2" x 3" rectangle in fabric E and one 10 1/2" x 3" rectangle in fabric H, sandwich them inbetween your 14" zipper.
- Using a zipper foot sew as close to the zipper teeth as possible.
- Sew the two pieces of fabric with right sides together with the zipper sandwiched inbetween the two pieces of fabric. (Figure 5a and 5b)
- Press fabric away from zipper and topstitch as close the zipper as possible. (Figure 5c)
- Repeat process for the other side of the zipper.

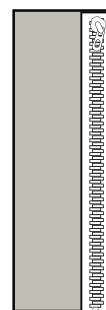


Figure 6a



Figure 6b

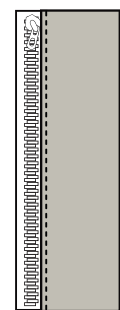


Figure 6c

- Place 10 1/2" x 5 1/2" rectangle from fabric H with right side facing up. Place the finished zipper piece in Figure 6 on top.
- Sew pieces together on all sides as close to the edge as possible. (Figure 7)

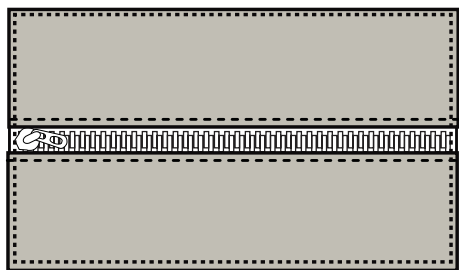


Figure 7

- Sew 10 1/2" x 5 1/2" from fabric C to the piece you made in Figure 5. Then sew the zipper piece you made in Figure 6 to the end of that.

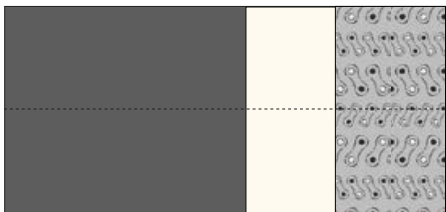
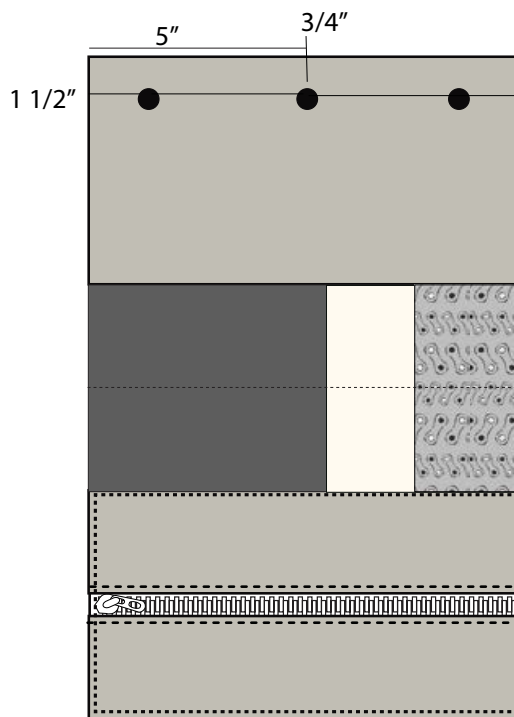


Figure 8

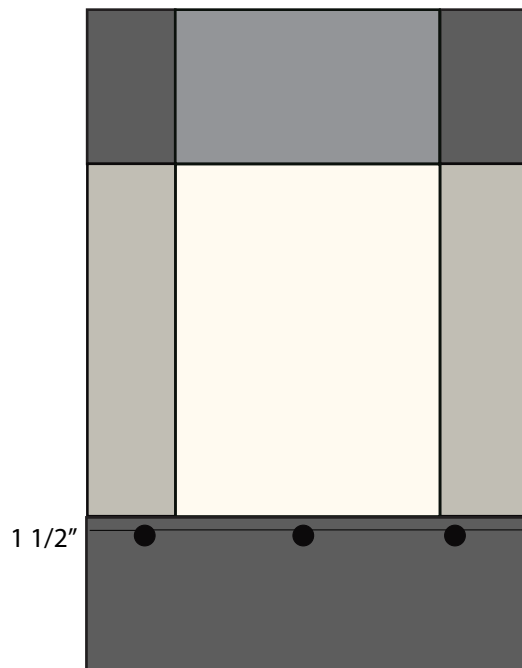
- Sew snaps in the inside of the clutch on the 10 1/2" x 5 1/2" rectangle from fabric C. Measure 1 1/2" in on each side and 3/4" from top and mark. Measure 5" from the side and 3/4" down and mark.
- Sew snaps where you marked your measurements.



Inside Clutch

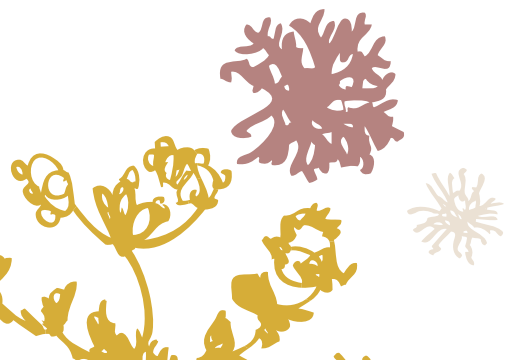
Figure 9

- Repeat the same process in Figure 9 for the inside of the clutch but measure down 1/4" on 10 1/2" x 4 rectangle from fabric D.



Outside Clutch

Figure 10



- Iron 10" x 15" rectangle of fusible to the back of the outside of the clutch.
- Feel free to make fun quilting stitches in the middle of the outside of the clutch for decoration or leave as is if preferred.
- Sew inside clutch and outside of clutch together with right sides together.
- Sew all the way around leaving a small unsewn portion to pull the right side of the fabric out.
- Once you pull the right side of the fabric out, turn unsewn portion under and handstitch.



Feel the difference
 For more free patterns visit:
artgalleryfabrics.com

NOTE: While all possible care has been taken to ensure the accuracy of this pattern, we are not responsible for printing errors or the way in which individual work varies. Please read instructions carefully before starting the construction of this clutch. If desired, wash and iron your fabrics before starting to cut.

© 2014 Courtesy of Art Gallery Quilts LLC.
 All Rights Reserved.