

Blossom Bag

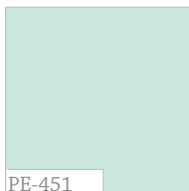
Featuring

GEOMETRIC Bliss*

Collection by JENI BAKER



GBL-1434
Poppie Coordinates
Jade



PE-451
Icy Mint



PE-446
Honeydew

FABRIC REQUIREMENTS

Fabric A	GBL-1434	1/2 yd.
Fabric B	PE-451	5/8 yd.
Fabric C	PE-446	1/4 yd.

CUTTING DIRECTIONS

Cut Two (2) Flower Templates on fold in Fabric **A**, two (2) in Fabric **B**, and two (2) in Medium Weight Fusible

Cut One (1) 3 1/2" x 25" strip from Fabric **A, B** and Medium Weight Fusible (side strips)

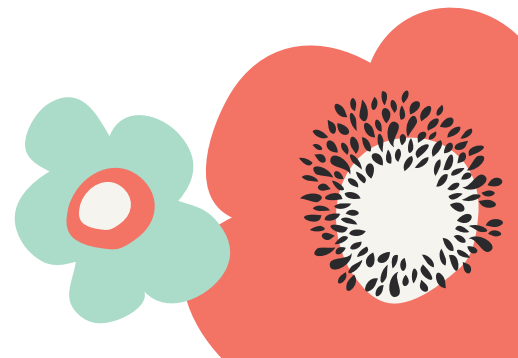
Cut One (1) 27 1/2" x 3 1/2" strip from Fabric **B** and from Medium Weight Fusible (Strap)

Cut Four (4) smaller circle templates in Fabric **C**

BAG CONSTRUCTION

Sew all rights sides together with 1/4" seam allowance. Press open.

- Iron both flower templates cut in medium weight fusible to the flower templates cut out in Fabric **B**.
- Iron 3 1/2" x 25" strips from medium weight fusible to 3 1/2" x 25" strip from Fabric **B**.
- Iron the 27 1/2" x 3 1/2" strip medium weight fusible to the 27 1/2" x 3 1/2" strip from Fabric **B**.
- Take two (2) small circle templates cut in Fabric **C** and sew them right sides together, leaving a small unsewn portion to flip fabric right side out.
- Flip circle through unsewn portion, tuck in unsewn portion and press circle.
- Repeat same steps with the other two circle templates.



- Sew circles to the middle of the flower templates you cut out in Fabric . (Diagram 1)

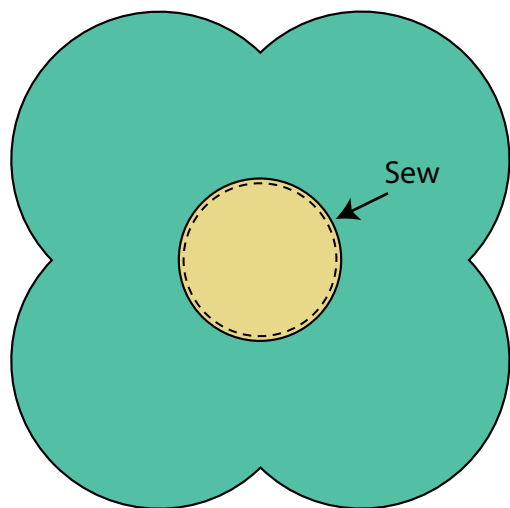


DIAGRAM 1

- Leave circles as is or for more detail add embroidery stitching to the center of the circle. (Diagram 2)

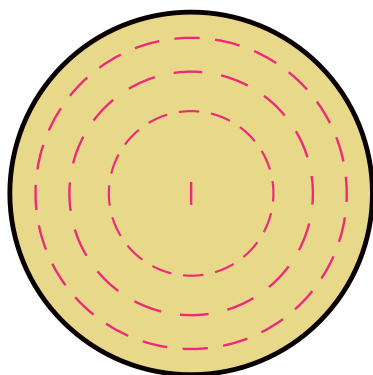
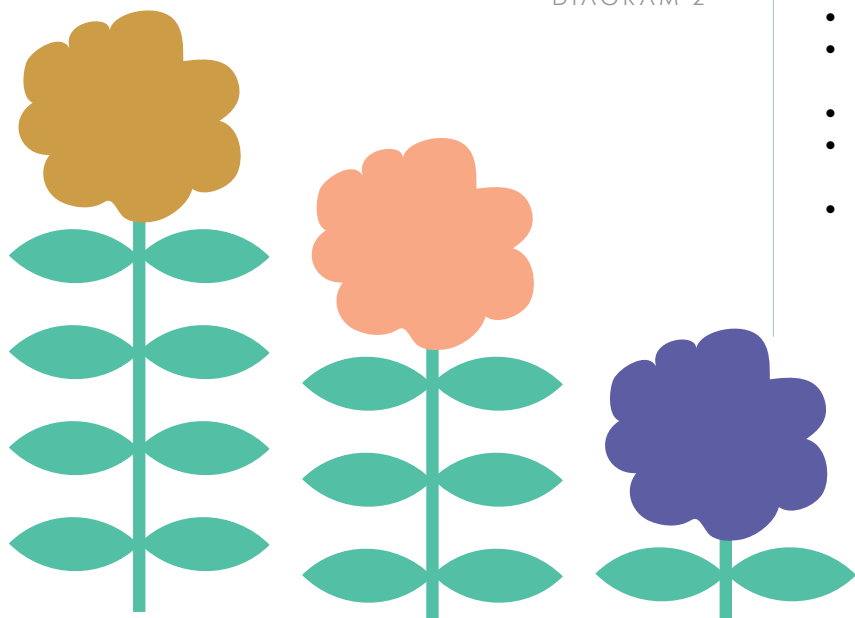


DIAGRAM 2



- Pin 3 1/2" x 25" strip from Fabric A to one side of flower template cut in Fabric A starting at notch mark . Sew one side of strip to flower.
- Next pin the other side of strip to the other side of the flower template and sew.
- Repeat the same process with the flower templates cut from Fabric B and side strips cut in Fabric B. Leave a small unsewn portion in the lining of the bag so you are able to pull bag through after the bag is complete.
- Take one 27 1/2" x 3 1/2" strip from Fabric B and fold right sides together lengthwise and sew. (Diagram 3a)
- Flip strap through with a safety pin. (Diagram 3c)
- Topstitch the long side of both straps at 1/4" seam allowance.

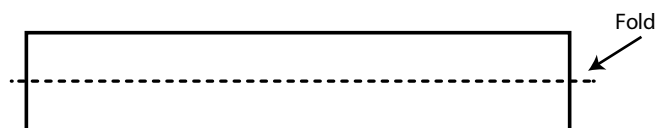


DIAGRAM 3a

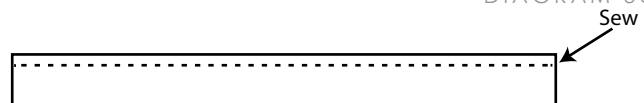
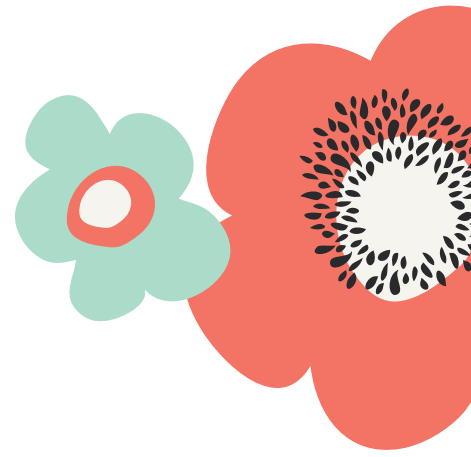


DIAGRAM 3b



DIAGRAM 3c

- Sew one side of strap to the right side of side panel cut from Fabric A. Pin equal distance on both sides of piece and sew. Repeat the same steps for other side of strap.
- To finish the bag place the front of the bag inside the lining with right sides together.
- Match up sides seams and pin pieces together.
- Make sure that the handles lay down and flat.
- Sew all the way around the bag.
- Pull bag through the small unsewn portion in you lining.
- Handstitch unsewn portion in the lining closed.
- Topstitch 1/4" from the edge of the top of the bag.
- Handstitch snaps to the top center of the lining in order to open and close bag.



enjoy!



Feel the difference
For more free patterns visit:
artgalleryfabrics.com

NOTE: While all possible care has been taken to ensure the accuracy of this pattern, we are not responsible for printing errors or the way in which individual work varies. Please read instructions carefully before starting the construction of this quilt. If desired, wash and iron your fabrics before starting to cut.
© 2014 Courtesy of Art Gallery Quilts LLC.
All Rights Reserved.



Budding Blossom Template

Notch

↓
Cut On Fold

