

# Aroma





# Aroma

MINI QUILT DESIGNED BY AGF studio

FINISHED SIZE | 17 ½" x 17 ½"



FABRICS DESIGNED BY KATARINA ROCCELLA

OPULENT



LAH-16800  
MOTHER'S GARDEN LIGHT



LAH-16801  
SUNPRINT ORCHID



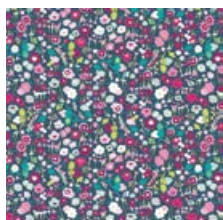
LAH-16802  
AGED STROKES MATTE



LAH-16803  
BLOSSOM SWALE DEPTH



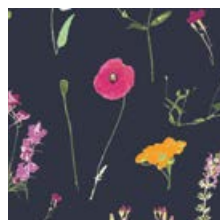
LAH-16804  
SEEDS OF DALIA



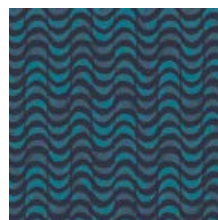
LAH-16807  
PRETTY DISTY DREAM



LAH-16808  
BEJEWELED SEAL INK



LAH-16809  
PETAL PICKING DENSE

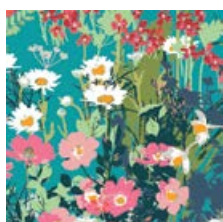


LAH-16810  
GENTLE DRAFT MOON



LAH-16812  
FLOWERFUL DANDLE-PANEL

LUSH



LAH-26800  
MOTHER'S GARDEN RICH



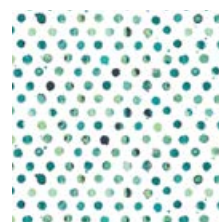
LAH-26801  
SUNPRINT FERN



LAH-26802  
AGED STROKES GLOSS



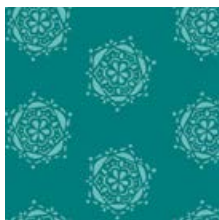
LAH-26803  
BLOSSOM SWALE CALM



LAH-26805  
DOTS TILE FRESCO



LAH-26806  
FLOWERED MEDLEY



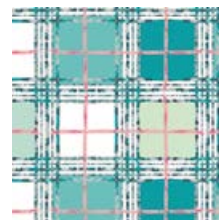
LAH-26808  
BEJEWELED SEAL TEAL



LAH-26809  
PETAL PICKING DANITY



LAH-26810  
GENTLE DRAFT SUNRISE



LAH-26811  
TRELLIS PLAID FRESH



FEEL THE DIFFERENCE © 2015 Courtesy of Art Gallery Quilts LLC. All Rights Reserved.

# FABRIC REQUIREMENTS

Fabric <b>A</b>	LAH-16803	Fat Eighth
Fabric <b>B</b>	LAH-16807	Fat Eighth
Fabric <b>C</b>	LAH-16801	1 ¼ yd.
Fabric <b>D</b>	LAH-16810	Fat Eighth
Fabric <b>E</b>	LAH-16804	Fat Quarter
Fabric <b>F</b>	LAH-26800	Fat Eighth
Fabric <b>G</b>	LAH-26802	Fat Eighth
Fabric <b>H</b>	LAH-26803	Fat Eighth
Fabric <b>I</b>	LAH-26811	Fat Eighth
Fabric <b>J</b>	LAH-26808	Fat Eighth.
Fabric <b>K</b>	LAH-26801	Fat Eighth
Fabric <b>L</b>	LAH-26810	Fat Eighth
Fabric <b>M</b>	PE-433	⅓ yd.

**BACKING FABRIC**  
LAH-26805 - ¾ yds. *(Suggested)*

**BINDING FABRIC**  
LAH-16801- (Fabric **C**) *(included)*

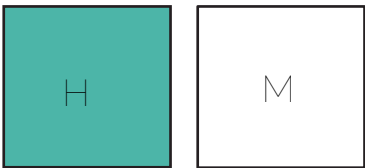


DIAGRAM 1

- Place on top with right sides together! Draw a diagonal line from one corner to the other.
- Sew on each side of the line you drew at 1/4". (DIAGRAM 2)

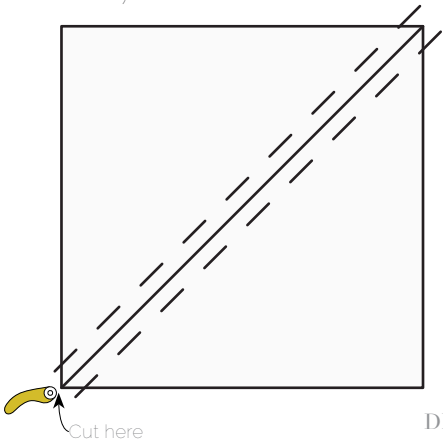


DIAGRAM 2

- Cut on your diagonal line. Press seams open (DIAGRAM 3)

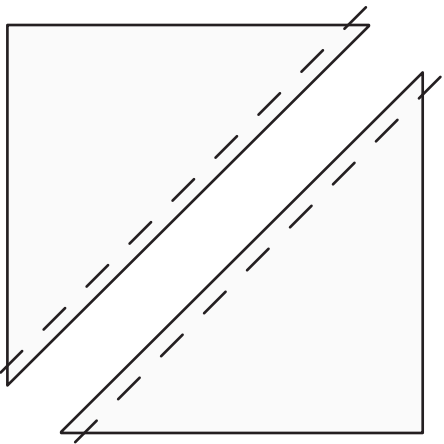


DIAGRAM 3

# CUTTING DIRECTIONS

¼" seam allowances are included.  
WOF means width of fabric.

- Two (2) 2 7/8" squares from Fabric **A,E,F,G,H,G and L**
- One (1) 2 7/8" squares from Fabric **B,D, and I**
- Three (3) 2 7/8" squares from Fabric **C and K**
- Two (2) 2 1/2" x 18" strips from Fabric **E (border)**
- Two (2) 2 1/2" x 14" strips from Fabric **E (border)**
- Twenty (20) 2 7/8" squares from Fabric **M**
- Twenty (20) 2 1/2" squares from Fabric **M**

# CONSTRUCTION

*Read through all instructions before beginning. Sew all rights sides together with ¼" seam allowance unless otherwise stated.*

- To create two half square triangles with Fabric **H** and Fabric **M**, take 2 7/8" x 2 7/8" squares from both fabrics. (DIAGRAM 1)

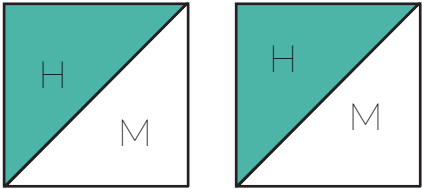


DIAGRAM 4

- You will need the following HST's: three from **A/M**, two from **B/M**, six from **C/M**, two from **D/M**, three from **E/M**, three from **F/M**, three from **G/M**, three from **H/M**, two from **I/M**, four from **J/M**, five from **K/M**, and three from **L/M**. (DIAGRAM 5)

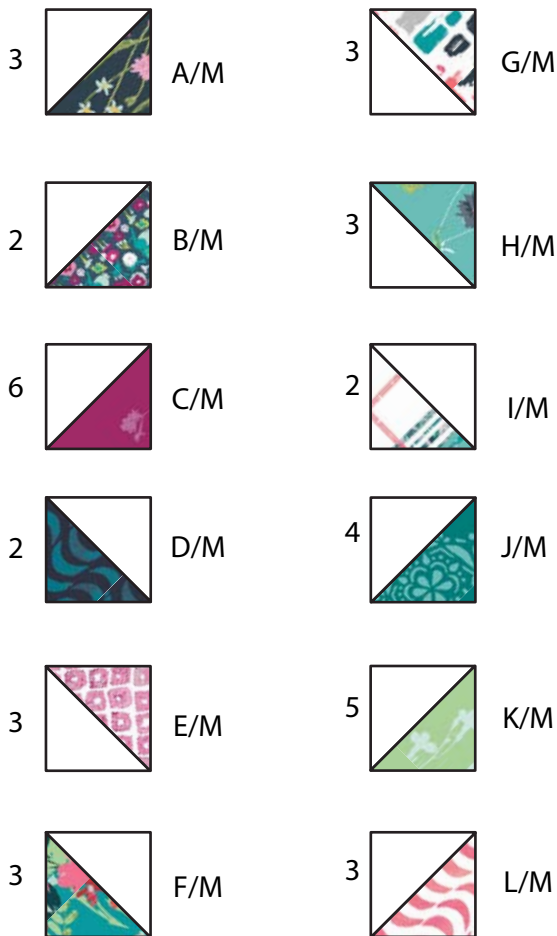


DIAGRAM 5

- After your half square triangles are complete sew the following rows together following Diagram 6.

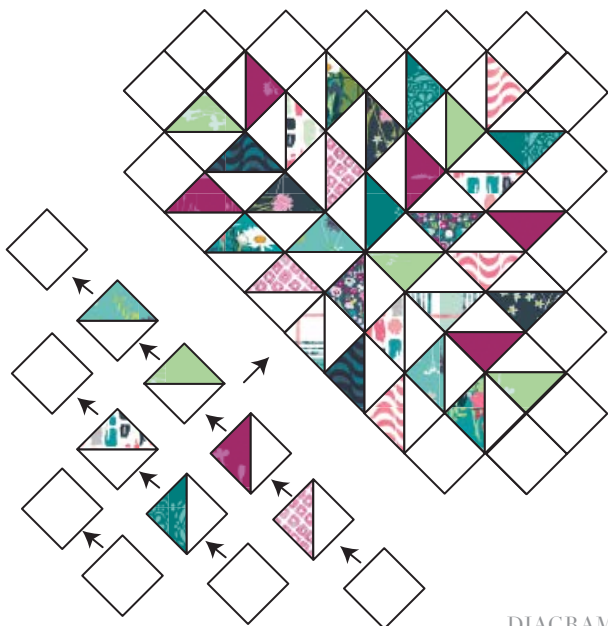


DIAGRAM 6

- Once all your rows of HST's are sewn together, square off piece. (DIAGRAM 7)

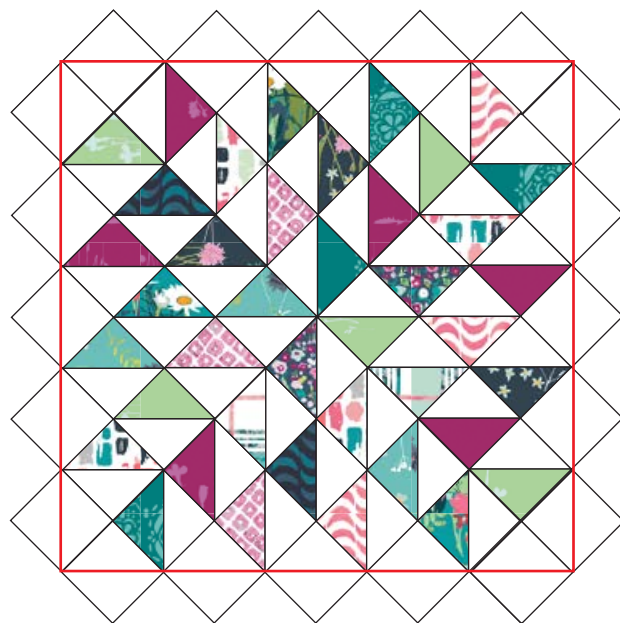


DIAGRAM 7

- Take your border pieces and sew both 2 1/2' x 14' strips to the top and bottom of your piece. Next sew your 2 1/2' x 18' strips to the sides of your piece. (DIAGRAM 8)

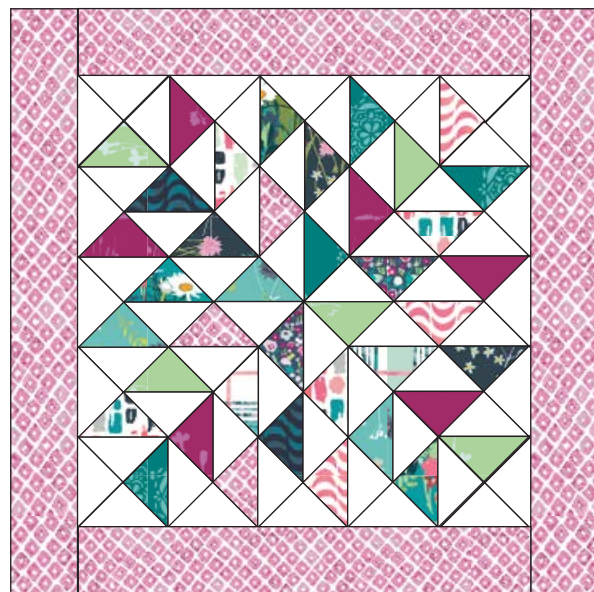


DIAGRAM 8



## QUILT ASSEMBLY

*Sew rights sides together.*

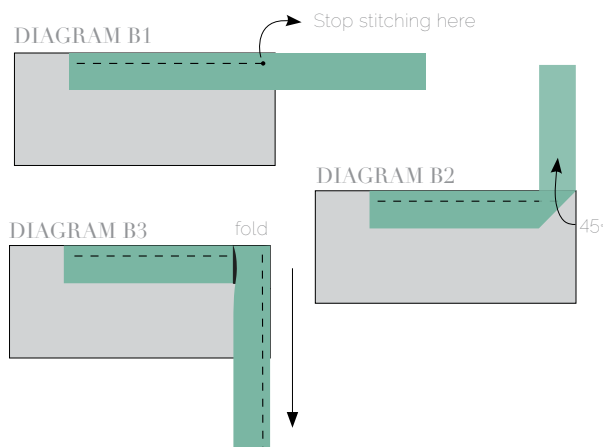
- Place BACKING FABRIC on a large surface wrong side up. Stretch it with masking tape against that surface.
- Place BATTING on top of backing fabric.
- Place TOP on top of the batting with right side facing up. Smooth away wrinkles using your hands.
- Pin all layers together and baste with basting thread, using long stitches. You can also use safety pins to join the layers.
- Machine or hand quilt starting at the center and working towards the corners. Remember that quilting motifs are a matter of personal preference. Have fun choosing yours!
- After you finished, trim excess of any fabric or batting, squaring the quilt to proceed to bind it.

## BINDING

*Sew rights sides together.*

- Cut enough strips  $1\frac{1}{2}$ ' wide by the width of the fabric **C** to make a final strip 82' long. Start sewing the binding strip in the middle of one of the sides of the quilt, placing the strip right side down and leaving an approximated 5' tail. Sew with  $\frac{1}{4}$ ' seam allowance (using straight stitch), aligning the strip's raw edge with the quilt top's raw edge.
- Stop stitching  $\frac{1}{4}$ ' before the edge of the quilt (**DIAGRAM B 1**). Clip the threads. Remove the quilt from under the machine presser foot. Fold the strip in a motion of  $45^\circ$  and upward, pressing with your fingers (**DIAGRAM B2**). Hold this fold with your finger, bring the strip down in line with the next edge, making a horizontal fold that aligns with the top edge of the quilt (**DIAGRAM B3**). Start sewing at  $\frac{1}{4}$ ' of the border, stitching all the layers. Do the same in the four corners of the quilt.
- Stop stitching before you reach the last 5 or 6 inches. Cut the threads and remove the quilt from under the machine presser foot. Lay the loose ends of the binding flat along the quilt edge, folding the ends back on themselves where they meet. Press them together to form a crease. Using this crease as the stitching line, sew the two open ends of the binding with right sides together (you can help yourself marking with a pencil if the crease is difficult to see).

- Trim seam to  $\frac{1}{4}$ ' and press open. Complete the sewing. Turn binding to back of the quilt, turn raw edge inside and stitch by hand using blind stitch.



Congratulations  
& enjoy



[artgalleryfabrics.com](http://artgalleryfabrics.com)

NOTE: While all possible care has been taken to ensure the accuracy of this pattern, We are not responsible for printing errors or the way in which individual work varies.

Please read instructions carefully before starting the construction of this quilt. If desired, wash and iron your fabrics before starting to cut.

© 2016 Courtesy of Art Gallery Quilts LLC. All Rights Reserved.