



{ FEATURING **URBAN MOD** COLLECTION }



FREE PROJECT SHEET

DESIGNED WITH LOVE BY Pat Bravo

QUILT DESIGNED
WITH LOVE BY *Pat Bravo*

URBANista

FINISHED SIZE: 79" x 74"

To download the instructions
for this pattern visit

artgalleryfabrics.com

KIT QUANTITY

UR-70017	1/2 yd.
UR-70011	1/8 yd.
UR-70014	1/8 yd.
UR-70010	1/2 yd.
UR-70015	1/8 yd.
UR-80011	1/8 yd.
UR-80015	1/8 yd.
UR-80013	1/8 yd.
UR-70019	1/8 yd.
UR-80017	1/8 yd.
UR-70012	1/8 yd.
UR-80018	1/8 yd.
UR-70018	1/4 yd.
UR-80019	1/8 yd.
UR-80010	1/8 yd.
UR-80012	1/8 yd.
PE-433	2 3/4 yd.
PE-430	1/2 yd.
Backing	4 1/2 yd.



Urban mod
by AGF IN-HOUSE studio

ADDITIONAL BLENDERS USED



PE-430 Moonstone

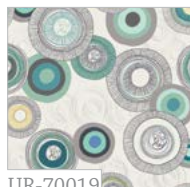


PE-433 Snow

STREET SIREN



UR-70010
Cosmopolitan Lime



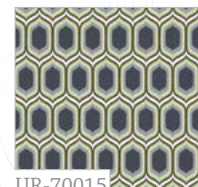
UR-70019
Roundabout by Day



UR-70014
Picasso a la Blue



UR-70012
Mural Van Cyan



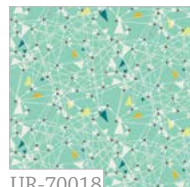
UR-70015
Stenciled Retro Silver



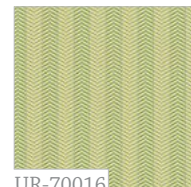
UR-70017
Cubisme Verdigris



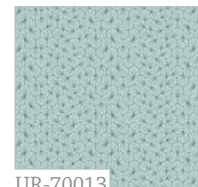
UR-70011
Pointelle Shade



UR-70018
Triangularity Topaz

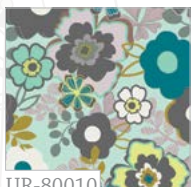


UR-70016
Corcheterie Street Olivine

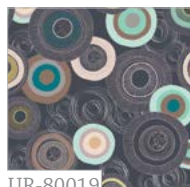


UR-70013
Optical Origami Shine

DOWNTOWN VIXEN



UR-80010
Cosmopolitan Currant



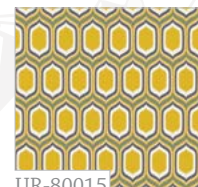
UR-80019
Roundabout by Night



UR-80014
Picasso a la Rose



UR-80012
Mural Van Mauve



UR-80015
Stenciled Retro Gold



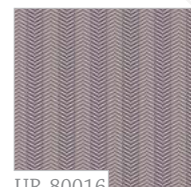
UR-80017
Cubisme Lavender



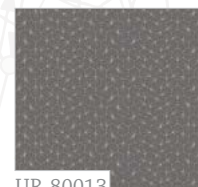
UR-80011
Pointelle Celeste



UR-80018
Triangularity Sterling



UR-80016
Corcheterie Street Lilac



UR-80013
Optical Origami Moon

QUILT DESIGNED
WITH LOVE BY **Pat Bravo**

URBANista

FINISHED SIZE: 79" x 74"

To download the instructions
for this pattern visit

artgalleryfabrics.com

FABRIC REQUIREMENTS

Fabric A	UR-70017	1/2 yd.
Fabric B	UR-70011	1/8 yd.
Fabric C	UR-70014	1/8 yd.
Fabric D	UR-70010	1/2 yd.
Fabric E	UR-70015	1/8 yd.
Fabric F	UR-80011	1/8 yd.
Fabric G	UR-80015	1/8 yd.
Fabric H	UR-80013	1/8 yd.
Fabric I	UR-70019	1/8 yd.
Fabric J	UR-80017	1/8 yd.
Fabric K	UR-70012	1/8 yd.
Fabric L	UR-80018	1/8 yd.
Fabric M	UR-70018	1/4 yd.
Fabric N	UR-80019	1/8 yd.
Fabric O	UR-80010	1/8 yd.
Fabric P	UR-80012	1/8 yd.
Fabric Q	PE-433	2 3/4 yd.
Fabric R	PE-430	1/2 yd.

Backing Fabric

UR-70015 (Fabric **E**) 4 1/2 yds.
(suggested)

Binding Fabric

PE-430 (Fabric **R**) (included)

FABRICS DESIGNED BY AGF-STUDIO
QUILT CONSTRUCTED BY PRISCILLA RAMIREZ FOR
ART GALLERY FABRICS



CUTTING DIRECTIONS

1/4" seam allowances are included.

BLOCKS 1a and 1b

For ALL blocks, cut:

- 10 (ten) 3 1/2" x 3 3/4" Fabric **A** rectangles
- 11 (eleven) 3 1/2" x 3 3/4" Fabric **B** rectangles
- 11 (eleven) 3 1/2" x 3 3/4" Fabric **C** rectangles
- 21 (twenty-one) 3 1/2" x 3 3/4" Fabric **D** rectangles
- 11 (eleven) 3 1/2" x 3 3/4" Fabric **E** rectangles
- 10 (ten) 3 1/2" x 3 3/4" Fabric **F** rectangles
- 10 (ten) 3 1/2" x 3 3/4" Fabric **G** rectangles
- 10 (ten) 3 1/2" x 3 3/4" Fabric **H** rectangles
- 11 (eleven) 3 1/2" x 3 3/4" Fabric **I** rectangles
- 11 (eleven) 3 1/2" x 3 3/4" Fabric **J** rectangles
- 11 (eleven) 3 1/2" x 3 3/4" Fabric **K** rectangles
- 11 (eleven) 3 1/2" x 3 3/4" Fabric **L** rectangles
- 21 (twenty-one) 3 1/2" x 3 3/4" Fabric **M** rectangles
- 10 (ten) 3 1/2" x 3 3/4" Fabric **N** rectangles
- 10 (ten) 3 1/2" x 3 3/4" Fabric **O** rectangles
- 10 (ten) 3 1/2" x 3 3/4" Fabric **P** rectangles

FOR SASHING CUT

solid sashing:

- 8 (eight) 4 1/2" x 68 3/4" Fabric **Q** strips*

combined sashing:

- 24 (twenty-four) 1/2" x 11 Fabric **J** strips
- 20 (twenty) 1 1/2" x 1 1/2" Fabric **R** squares

FOR BORDERS CUT

Inner Border

- Two 2 1/2" x 63 1/2" strips from fabric **Q***
- Two 2 1/2" x 72 3/4" strips from fabric **Q***

Middle Border

- Two 1 1/2" x 67 1/2" strips from fabric **D***
- Two 1 1/2" x 74 3/4" strips from fabric **D***

Outer Border

- Two 2 1/2" x 69 1/2" strips from fabric **Q***
- Two 2 1/2" x 78 3/4" strips from fabric **Q***

* In order to get these long strips you need
to join two or more Width Of Fabric strips together.

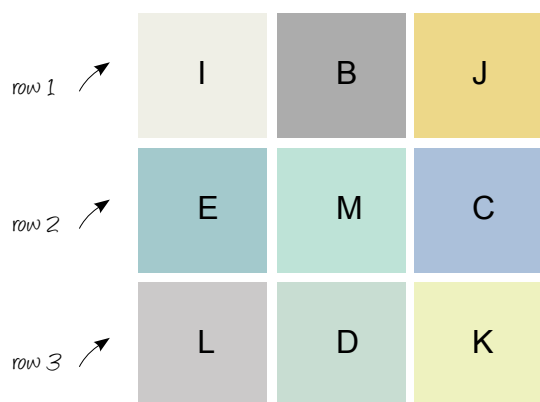
BLOCK CONSTRUCTION

Sew all rights sides together with 1/4" seam allowance. Press open.

Step 1: Blocks 1a and 1b

- The construction of the main blocks of this quilt, **blocks 1a** and **1b**, is quite simple. It involves piecing rows first and then attaching them to each other. Follow the cover photo to have better accuracy when piecing.
- For the first row of block **1a** (first on the top left of the cover page) attach a rectangle from fabric **I**, a rectangle from fabric **B**, and a rectangle from fabric **J**. Attach them in that order on the shorter sides (DIAGRAM 1).
- Based on the last step, construct all the rows. When you are finished, you can begin to attach each row to the one below. There are a total of 3 rows. Repeat the steps until you have 11 of these blocks.

DIAGRAM 1



- For block **1b** simply follow the same steps as block **1a**, except you will replace the following fabrics: Fabric **I** with Fabric **F**, Fabric **B** with Fabric **N**, Fabric **J** with Fabric **M**, Fabric **E** with Fabric **P**, Fabric **M** with Fabric **A**, Fabric **C** with Fabric **D**, Fabric **L** with Fabric **H**, Fabric **D** with Fabric **O**, and Fabric **K** with Fabric **G**. You will construct 10 of these blocks.
- When you have the twenty-one blocks ready, create three different rows of seven blocks each. For two of the rows begin with a **1a** block and alternate with **1b** blocks. For the third row begin with a **1b** block and alternate with **1a** blocks.

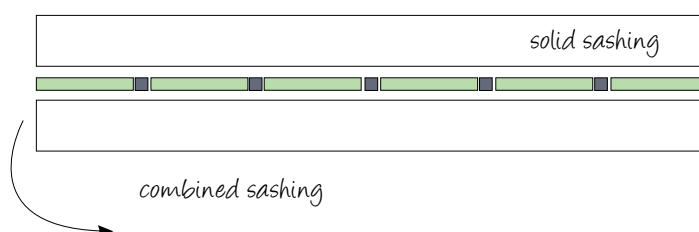
SASHING ASSEMBLY

Sew all rights sides together with 1/4" seam allowance. Press open.

Combined Sashing

- Grab all of the pieces cut under "Combined Sashing" and create four long individual strips using six 1 1/2" x 11 strips from fabric **J**, and five 1 1/2" x 1 1/2" squares from fabric **R** for each long strip. Begin with a strip and alternate.
- To this **combined sashing** piece attach a **solid sashing** strip on top and another on the bottom (DIAGRAM 1). Repeat until you have four sashing pieces.
- These will be your FINAL SASHING strips.

DIAGRAM 1



ASSEMBLING THE TOP

Sew all rights sides together with 1/4" seam allowance. Press open.

- Now that you have the final sashing and the three block rows you are ready to assemble the top.
- Follow the cover photo to assemble the top of this quilt. Go from top following a horizontal order. Begin with one of the sashing strips sewing it to the first block row (the one that has a **1a** block first), then add another sashing strip, the second block row (block **1b** first), another sashing strip, the last block row and finally the last sashing strip.

BORDERS ASSEMBLY

Sew all rights sides together with 1/4" seam allowance. Press open.

For the inner border

- Sew two 2 1/2" x 63 1/2" fabric **Q** strips along the left and right sides of the quilt top.
- Sew the other two 2 1/2" x 72 3/4" fabric **Q** strips along the top & bottom sides of the quilt top.

For the middle and outer borders

- Middle: Sew two 1 1/2" x 67 1/2" fabric **D** strips along the left and right sides of the quilt top.
- Sew the other two 1 1/2" x 74 3/4" fabric **D** strips along the top & bottom sides of the quilt top.
- Outer: Sew two 2 1/2" x 69 1/2" fabric **J** strips along the left and right sides of the quilt top.
- Sew the other two 2 1/2" x 78 3/4" fabric **J** strips along the top & bottom sides of the quilt top.

QUILT ASSEMBLY

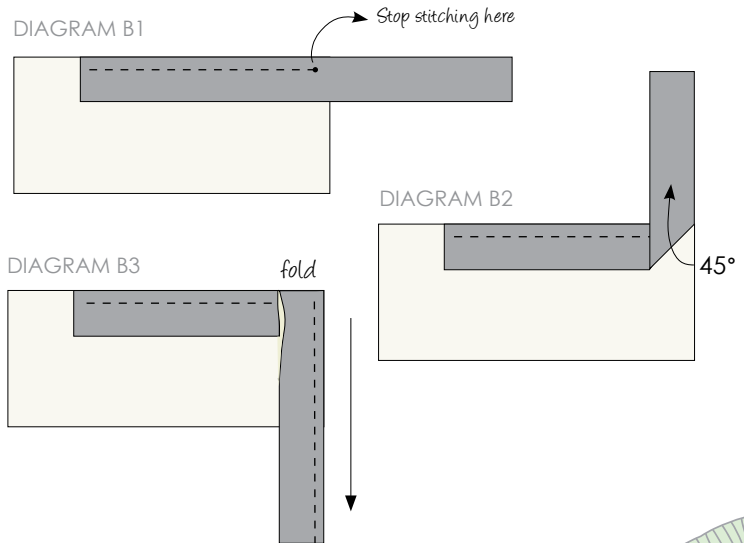
Sew right sides together.

- Place BACKING FABRIC on a large surface wrong side up. Stretch it with masking tape against that surface.
- Place BATTING on top of backing fabric.
- Place TOP on top of the batting with right side facing up. Smooth away wrinkles using your hands.
- Pin all layers together and baste with basting thread, using long stitches. You can also use safety pins to join the layers.
- Machine or hand quilt starting at the center and working towards the corners. Remember that quilting motives are a matter of personal preference. Have fun choosing yours!
- After you finished, trim excess of any fabric or batting, squaring the quilt to proceed to bind it.

BINDING

Sew right sides together.

- Cut enough strips $1\frac{1}{2}$ " wide by the width of the fabric **R** to make a final strip 315" long. Start sewing the binding strip in the middle of one of the sides of the quilt, placing the strip right side down and leaving an approximated 5" tail. Sew with $\frac{1}{4}$ " seam allowance (using straight stitch), aligning the strip's raw edge with the quilt top's raw edge.
- Stop stitching $\frac{1}{4}$ " before the edge of the quilt (DIAGRAM B 1). Clip the threads. Remove the quilt from under the machine presser foot. Fold the strip in a motion of 45° and upward, pressing with your fingers (DIAGRAM B2). Hold this fold with your finger, bring the strip down in line with the next edge, making a horizontal fold that aligns with the top edge of the quilt (DIAGRAM B3). Start sewing at $\frac{1}{4}$ " of the border, stitching all the layers. Do the same in the four corners of the quilt.
- Stop stitching before you reach the last 5 or 6 inches. Cut the threads and remove the quilt from under the machine presser foot. Lay the loose ends of the binding flat along the quilt edge, folding the ends back on themselves where they meet. Press them together to form a crease. Using this crease as the stitching line, sew the two open ends of the binding with right sides together (you can help yourself marking with a pencil if the crease is difficult to see).
- Trim seam to $\frac{1}{4}$ " and press open. Complete the sewing. Turn binding to back of the quilt, turn raw edge inside and stitch by hand using blind stitch.



CONGRATULATIONS!

To see more patterns, fabrics and lots of inspiration visit:



Feel the difference

For wholesale visit:

artgalleryfabrics.com

NOTE: While all possible care has been taken to ensure the accuracy of this pattern, we are not responsible for printing errors or the way in which individual work varies. Please read instructions carefully before starting the construction of this quilt. If desired, wash and iron your fabrics before starting to cut.

© 2013 Courtesy of Art Gallery Quilts LLC.
All Rights Reserved.