

FREE PATTERN

XXXXXXXXXXXXXXXXXXXX

TRANSIRE



XXXXXXXXXXXXXXXXXXXX

XXXXXXXXXXXXXXXXXXXXXXXXXXXX



DENIM PRINTS



STYLE	DEN-P-1000
NAME	PAINTERLY WASH



STYLE	DEN-P-1001
NAME	DITSY ABRASION



STYLE	DEN-P-1002
NAME	RAGGED DAISIES



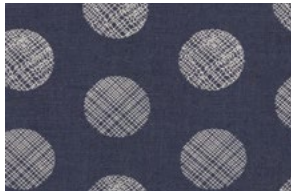
STYLE	DEN-P-1003
NAME	DIAMOND ARCUATE



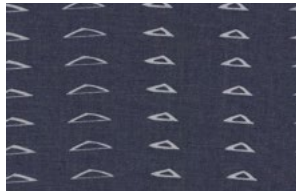
STYLE	DEN-P-1004
NAME	PUZZLE SANDBLAST



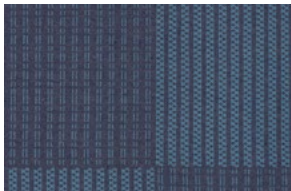
STYLE	DEN-P-1005
NAME	STITCHED-OGI



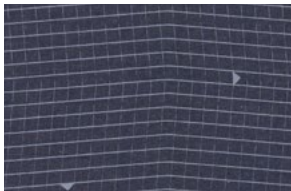
STYLE	DEN-P-1006
NAME	POINTELLE RINGS



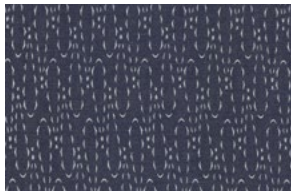
STYLE	DEN-P-1007
NAME	DISTRESSED TRIANGLES



STYLE	DEN-P-1008
NAME	ALLOVER BARTACKS



STYLE	DEN-P-1009
NAME	BOMBAZINE INSPIRED



STYLE	DEN-P-1010
NAME	CASTED LOOPS

SOLID TEXTURED DENIM



STYLE	DEN-T-3000
NAME	BLUEBOTTLE FIELD



STYLE	DEN-T-3001
NAME	EVERGREEN SLATE

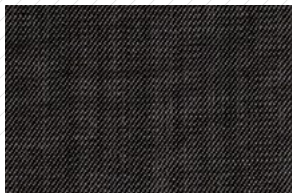


STYLE	DEN-T-3002
NAME	CANYON SUNSET

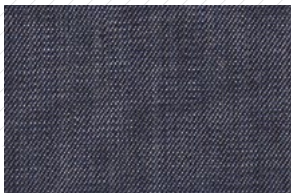


STYLE	DEN-T-3003
NAME	SCARLET BRICK

SOLID SMOOTH DENIM



STYLE	DEN-S-2000
NAME	WICKED SKY



STYLE	DEN-S-2001
NAME	INDIGO SHADOW



STYLE	DEN-S-2002
NAME	COOL FOLIAGE



STYLE	DEN-S-2003
NAME	AFTERNOON SAIL



STYLE	DEN-S-2004
NAME	INFUSED HYDRANGEA



STYLE	DEN-S-2005
NAME	FROSTED SAGE



STYLE	DEN-S-2006
NAME	ADOBE CLAY



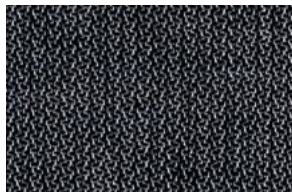
STYLE	DEN-S-2007
NAME	NECTARINE SUNRISE

PREMIUM LINEN BLEND



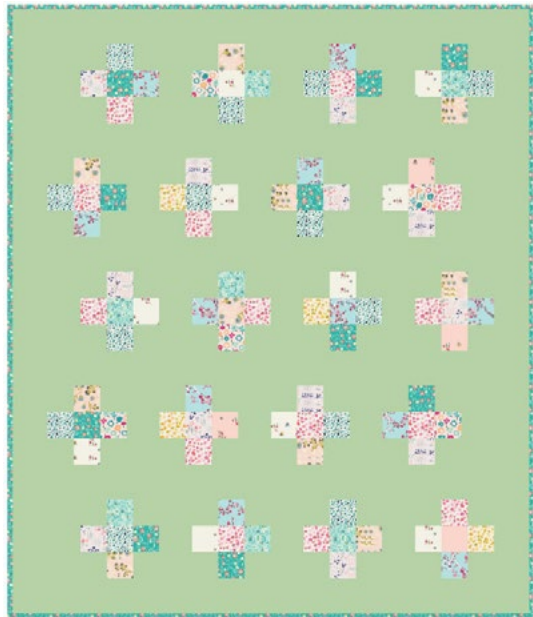
STYLE	DEN-L-4000
NAME	SOFT SAND

LOVEY DOBBY



STYLE	DEN-D-5000
NAME	EVENING LAKEVIEW

ADDITIONAL FABRICS



FOR THIS QUILT, PLEASE CHOOSE A MINIMUM OF TEN ASSORTED ART GALLERY FABRICS DITSY FLORALS. THE PLACEMENT OF THE PRINTS HERE IS RANDOM, BUT WE HAVE SOME SUGGESTIONS FOR YOU BELOW.



TRANSIRE

QUILT DESIGNED BY AGF STUDIO

FINISHED SIZE | 68 1/2" x 60 1/2"

FABRIC REQUIREMENTS

Fabric A	DEN-S-2005	2 3/8 yd.
Fabric B	ANE-8504	1 1/2 yd.
Fabric C	ESS-II-155	FE yd.
Fabric D	ESS-II-255	FE yd.
Fabric E	ESS-II-355	FE yd.
Fabric F	FOR-47704	FE yd.
Fabric G	PPE-343	FE yd.
Fabric H	MFL-21357	FE yd.
Fabric I	MFL-11357	FE yd.
Fabric J	POP-1287	FE yd.
Fabric K	WND-1533	FE yd.

BACKING FABRIC

ESS-II-155 4 yds. *(suggested)*

BINDING FABRIC

ANE-8504 (Fabric **B**) *(included)*

CUTTING DIRECTIONS

1/4" seam allowances are included.
WOF means width of fabric.

From Fabric **A** cut:

- Eighty (80) 3 1/2" squares
- Twenty (20) 4 1/2" x 9 1/2" rectangles
- Six (6) 4 1/2" x 51 1/2" strips (sashing & border)
- Two (2) 4 1/2" x 68 1/2" strips (Join enough WOF strips to obtain a strip in the desired length).

From Fabrics **B-K** cut:

- One hundred (100) 3 1/2" assorted squares (we suggest you cut ten (10) from each fabric).
- You will need about 10' of fabric **B** to cut your binding strips.

CONSTRUCTION

Sew all rights sides together with 1/4" seam allowance.

- The block construction in this quilt is the same for all the blocks.
- It is a classic g-patch block constituted of four fabric **A** squares placed at the corners, and five assorted squares from fabrics **B-K** placed in a cross-position.

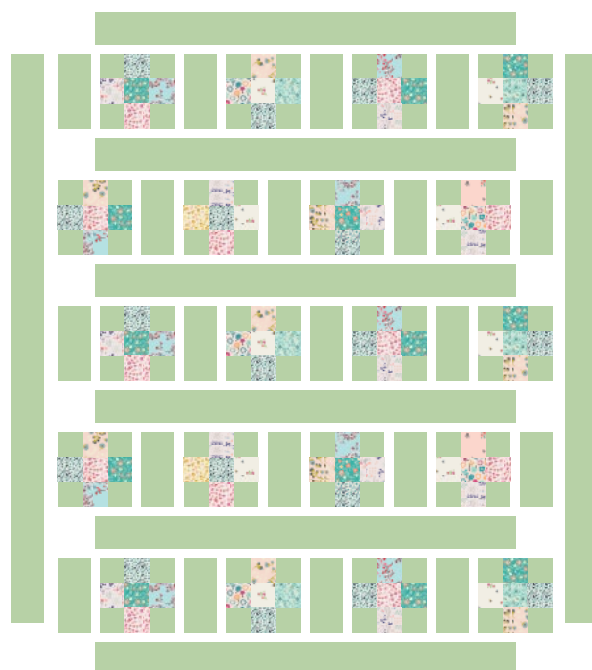


DIAGRAM 1

ASSEMBLING THE TOP

Sew all rights sides together with 1/4" seam allowance. Press open.

- Follow the diagram below:



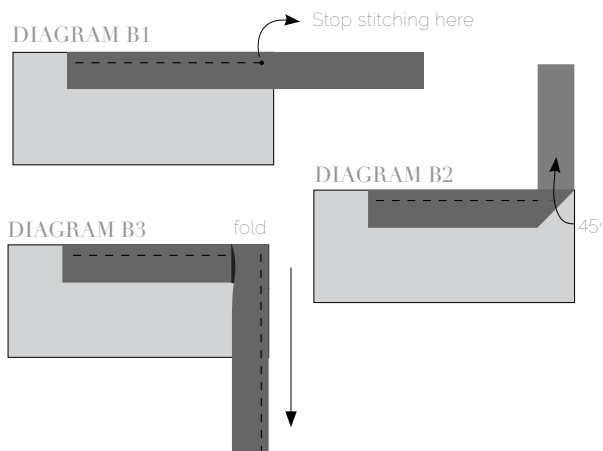
- First build the block rows by alternating one $4\frac{1}{2}' \times 9\frac{1}{2}'$ rectangle from fabric **A** and one block, for a total of four blocks and four rectangles per row.
- For the second and fourth rows start with a block and then a rectangle.
- Add a strip of fabric **A** sashing in between each row and one at the top and bottom to make a border
- The last step is to add the fabric **A** left and right border strips.

QUILT ASSEMBLY

Sew rights sides together.

- Place BACKING FABRIC on a large surface wrong side up. Stretch it with masking tape against that surface.
- Place BATTING on top of backing fabric.
- Place TOP on top of the batting with right side facing up. Smooth away wrinkles using your hands.
- Pin all layers together and baste with basting thread, using long stitches. You can also use safety pins to join the layers.
- Machine or hand quilt starting at the center and working towards the corners. Remember that quilting motifs are a matter of personal preference. Have fun choosing yours!
- After you finished, trim excess of any fabric or batting, squaring the quilt to proceed to bind it.

- Stop stitching before you reach the last 5 or 6 inches. Cut the threads and remove the quilt from under the machine presser foot. Lay the loose ends of the binding flat along the quilt edge, folding the ends back on themselves where they meet. Press them together to form a crease. Using this crease as the stitching line, sew the two open ends of the binding with right sides together (you can help yourself marking with a pencil if the crease is difficult to see).
- Trim seam to $\frac{1}{4}'$ and press open. Complete the sewing. Turn binding to back of the quilt, turn raw edge inside and stitch by hand using blind stitch.



BINDING

Sew rights sides together.

- Cut enough strips $1\frac{1}{2}'$ wide by the width of the fabric **B** to make a final strip 270" long. Start sewing the binding strip in the middle of one of the sides of the quilt, placing the strip right side down and leaving an approximated 5" tail. Sew with $\frac{1}{4}'$ seam allowance (using straight stitch), aligning the strip's raw edge with the quilt top's raw edge.
- Stop stitching $\frac{1}{4}'$ before the edge of the quilt (**DIAGRAM B 1**). Clip the threads. Remove the quilt from under the machine presser foot. Fold the strip in a motion of 45° and upward, pressing with your fingers (**DIAGRAM B2**). Hold this fold with your finger, bring the strip down in line with the next edge, making a horizontal fold that aligns with the top edge of the quilt (**DIAGRAM B3**). Start sewing at $\frac{1}{4}'$ of the border, stitching all the layers. Do the same in the four corners of the quilt.



artgalleryfabrics.com

NOTE: While all possible care has been taken to ensure the accuracy of this pattern, We are not responsible for printing errors or the way in which individual work varies. Please read instructions carefully before starting the construction of this quilt. If desired, wash and iron your fabrics before starting to cut.