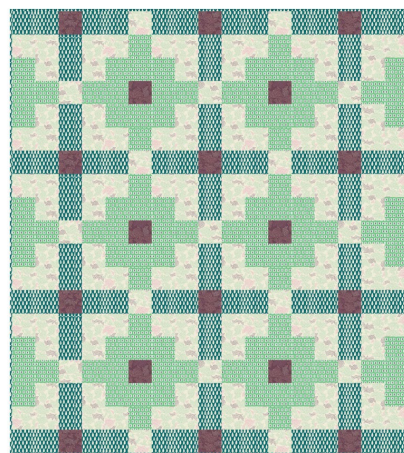




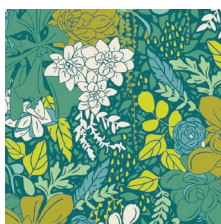
QUILT DESIGNED BY AGF-STUDIO

Succulence

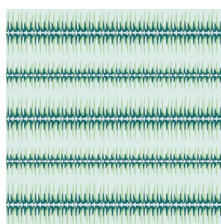
FABRICS DESIGNED BY BONNIE CHRISTINE



EARLY WINTER



SCC-88600
ROSETTE RAIN



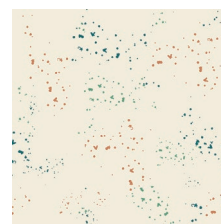
SCC-88601
TRAILING AGAVE



SCC-88602
ARBORETUM DAWN



SCC-88603
ABIDING RAINWATER



SCC-88604
DRENCHING ARIDITY



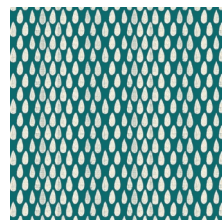
SCC-88606
EVERLASTING CACTI DESERT



SCC-88607
SPINY OASIS DIVINE



SCC-88608
GREENHOUSE AGLOW

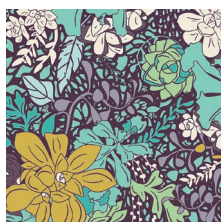


SCC-88609
ABUNDANCE MOONSOON

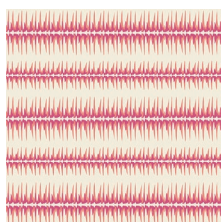


SCC-88610
HABITAT BEDEW

LIGHT OF DAY



SCC-98600
ROSETTE FIRESIDE



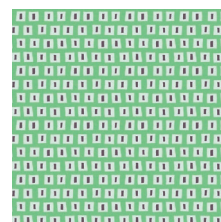
SCC-98601
TRAILING LAMENT



SCC-98602
ARBORETUM INSPIRIT



SCC-98603
ABIDING DEW



SCC-98605
SUCCULENT LATTICE AGLOW



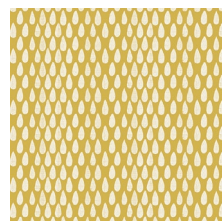
SCC-98606
EVERLASTING CACTI TERRAIN



SCC-98607
SPINY OASIS LUSH



SCC-98608
GREENHOUSE LUCENT



SCC-98609
ABUNDANCE SANDSTORM



SCC-98610
HABITAT LUCIOUS



FEEL THE DIFFERENCE © 2015 Courtesy of Art Gallery Quilts LLC. All Rights Reserved.



FINISHED SIZE | 63 $\frac{3}{4}$ ' x 71 $\frac{1}{4}$ '

FABRIC REQUIREMENTS

Fabric A	SCC-88608	$\frac{3}{8}$ yd.
Fabric B	SCC-98608	1 $\frac{5}{8}$ yd.
Fabric C	SCC-88609	1 $\frac{1}{2}$ yd.
Fabric D	SCC-98605	1 $\frac{1}{2}$ yd.

BACKING FABRIC

SCC-88600 4 yds. *(Suggested)*

BINDING FABRIC

SCC-88609 (Fabric **C**) *(included)*

CUTTING DIRECTIONS

$\frac{1}{4}$ " seam allowances are included.
WOF means width of fabric.

Eighteen (18) $4\frac{1}{4}$ ' squares from fabric **A**.

Fifty-three (53) $4\frac{1}{4}$ ' squares from fabric **B**.

Thirty-six (36) 8' x $4\frac{1}{4}$ ' strips from fabric **B**.

Forty-two (42) 8' x $4\frac{1}{4}$ ' strips from fabric **C**.

Forty-two (42) $4\frac{1}{4}$ ' squares from fabric **D**.

Eighteen (18) $11\frac{3}{4}$ ' x $4\frac{1}{4}$ ' strips from fabric **D**.

CONSTRUCTION

Sew all rights sides together with $\frac{1}{4}$ " seam allowance.

- There is a total of six blocks that need to be made for this quilt top construction.
- For each block take six $4\frac{1}{4}$ ' squares from fabric **D**, four $4\frac{1}{4}$ ' squares from fabric **B**, one $4\frac{1}{4}$ ' square from fabric **A**, two $11\frac{3}{4}$ ' x $4\frac{1}{4}$ ' strips from fabric **D** and two 8' x $4\frac{1}{4}$ ' from fabric **B**.
- Attach the $4\frac{1}{4}$ ' square from fabric **A** in between two of the $4\frac{1}{4}$ ' squares from fabric **D**, set aside.



DIAGRAM 1

- Take Two $4\frac{1}{4}$ ' squares from fabric **D** and four $4\frac{1}{4}$ ' squares from fabric **B**.
- Attach one of the $4\frac{1}{4}$ ' square from fabric **D** in between two of the $4\frac{1}{4}$ ' squares from fabric **B**. repeat the previous steps with the remaining squares, set aside.



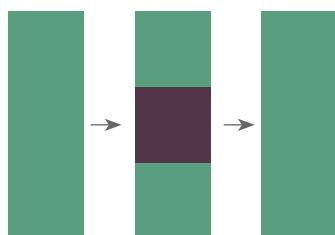
DIAGRAM 2

- Take two $4\frac{1}{4}$ ' squares from fabric **D** and four 8' x $4\frac{1}{4}$ ' strips from fabric **B**.
- Attach one of the $4\frac{1}{4}$ ' square from fabric **D** in between two of the $4\frac{1}{4}$ ' squares from fabric **B**. repeat the previous steps with the remaining squares, set aside.

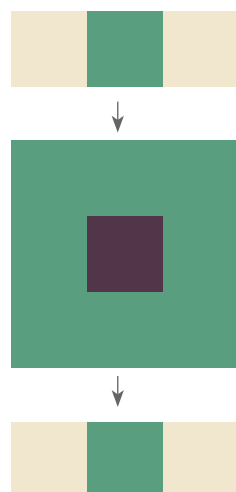


DIAGRAM 3

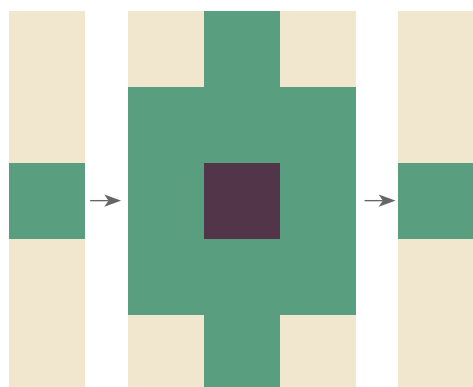
- Take the **DAD** Strip and the two $11\frac{3}{4}$ ' x $4\frac{1}{4}$ ' strips from fabric **D**.
- Attach the **DAD** strip in between the $11\frac{3}{4}$ ' x $4\frac{1}{4}$ ' strips from fabric **D**.



- Take the short **BDB** Strips and attach them to the top and bottom edge of the previous piece you made.



- Take the long **BDB** Strips and attach them to the right and left edge of the previous piece.
- Make six of this same block.



- Take two 8' x 4¼' strips from fabric **C** and one 4¼' square from fabric **B**.
- Attach the 4¼' square from fabric **B** in between the strips of the from fabric **C**. Repeat the previous steps Until you have a total of seventeen **CBC** strips.



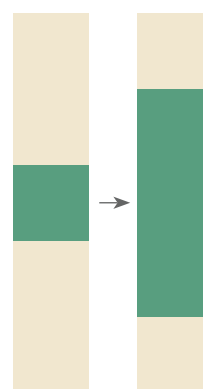
- Take the remaining 4¼" squares from fabric **B** and 11¾" x 4¼" strips from fabric **D**.
- Attach them in the order **BDB** until you have a total of six of this strips. Set aside



- Take the remaining 4¼" squares from fabric **D** and 8" x 4¼" strips from fabric **B**.
- Attach them in the order **BDB** until you have a total of six of this strips. Set aside.



- Take one of each of the previous made strips and attach them together.
- Repeat the same procedure until you have a total of six.



- Take three **CBC** strips, two blocks and two of the previous made pieces in **DIAGRAM 10**.
- Attach them together alternating the **CBC** in between the pieces and blocks as shown in the diagram below.
- Start and end the row with the piece made on **DIAGRAM 10**.

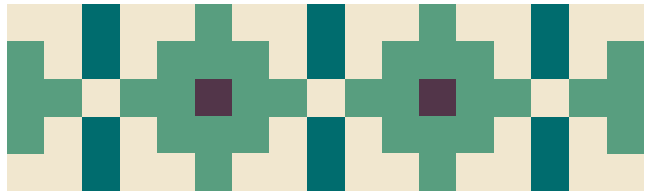


DIAGRAM 11

- Take two **CBC** strips, three $4\frac{1}{4}$ ' square from fabric **A** and two $8' \times 4\frac{1}{4}'$ strips from fabric **C**.
- Starting with one $8' \times 4\frac{1}{4}'$ strip from fabric **C** start attaching the pieces together to form a long strip in the following order **C-A-CBC-A-CBC-A-C**
- Repeat the previous steps until you have a total of four long strips.

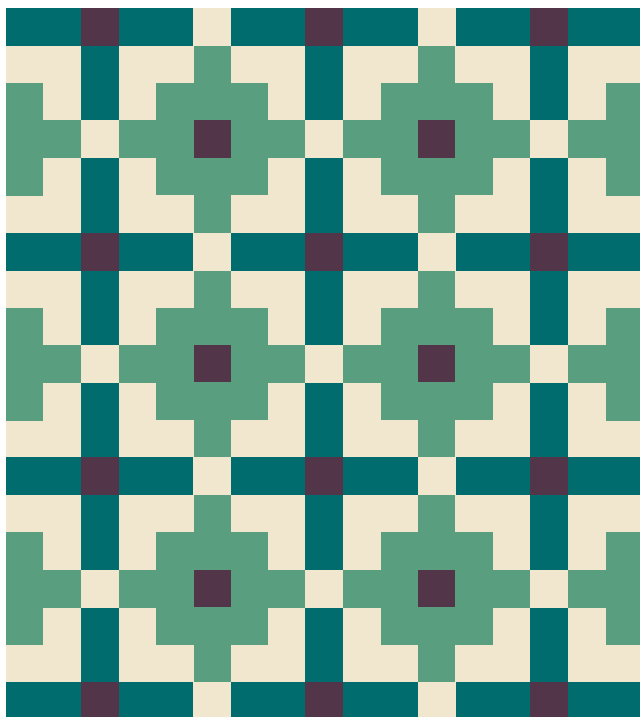


DIAGRAM 12

ASSEMBLING THE TOP

Sew all rights sides together with 1/4" seam allowance. Press open.

- Follow the cover picture as a reference.
- Take one of the long strip and attach it on top of one of the rows, continue attaching them together alternating their order until your done with all of the pieces.
- It should end up with a long strip.



QUILT ASSEMBLY

Sew rights sides together.

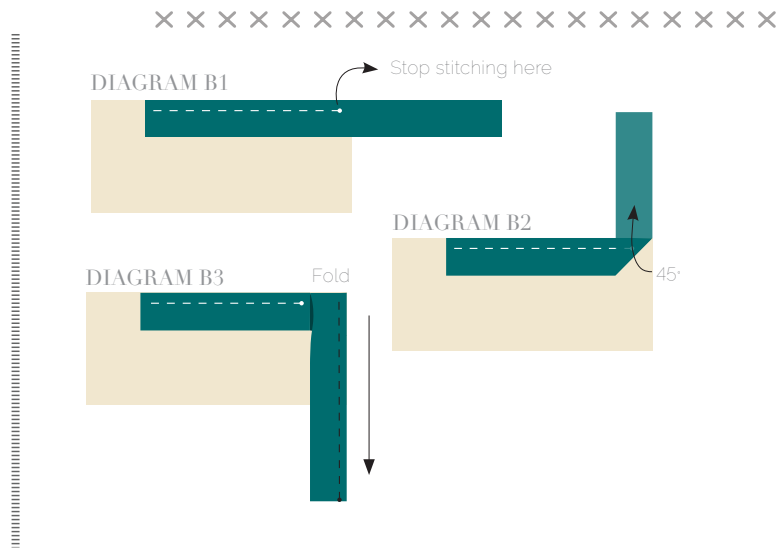
- Place BACKING FABRIC on a large surface wrong side up. Stretch it with masking tape against that surface.
- Place BATTING on top of backing fabric.
- Place TOP on top of the batting with right side facing up. Smooth away wrinkles using your hands.
- Pin all layers together and baste with basting thread, using long stitches. You can also use safety pins to join the layers.
- Machine or hand quilt starting at the center and working towards the corners. Remember that quilting motifs are a matter of personal preference. Have fun choosing yours!
- After you finished, trim excess of any fabric or batting, squaring the quilt to proceed to bind it.

BINDING

Sew rights sides together.

- Cut enough strips $1\frac{1}{2}$ " wide by the width of the fabric **C** to make a final strip 280" long. Start sewing the binding strip in the middle of one of the sides of the quilt, placing the strip right side down and leaving an approximated 5" tail. Sew with $\frac{1}{4}$ " seam allowance (using straight stitch), aligning the strip's raw edge with the quilt top's raw edge.
- Stop stitching $\frac{1}{4}$ " before the edge of the quilt (**DIAGRAM B 1**). Clip the threads. Remove the quilt from under the machine presser foot. Fold the strip in a motion of 45° and upward, pressing with your fingers (**DIAGRAM B2**). Hold this fold with your finger, bring the strip down in line with the next edge, making a horizontal fold that aligns with the top edge of the quilt (**DIAGRAM B3**). Start sewing at $\frac{1}{4}$ " of the border, stitching all the layers. Do the same in the four corners of the quilt.

- Stop stitching before you reach the last 5 or 6 inches. Cut the threads and remove the quilt from under the machine presser foot. Lay the loose ends of the binding flat along the quilt edge, folding the ends back on themselves where they meet. Press them together to form a crease. Using this crease as the stitching line, sew the two open ends of the binding with right sides together (you can help yourself marking with a pencil if the crease is difficult to see).
- Trim seam to $\frac{1}{4}$ " and press open. Complete the sewing. Turn binding to back of the quilt, turn raw edge inside and stitch by hand using blind stitch.



artgalleryfabrics.com

NOTE: While all possible care has been taken to ensure the accuracy of this pattern, We are not responsible for printing errors or the way in which individual work varies. Please read instructions carefully before starting the construction of this quilt. If desired, wash and iron your fabrics before starting to cut.

© 2015 Courtesy of Art Gallery Quilts LLC. All Rights Reserved.