

SAFARI STARS

{ FEATURING SAFARI MOON COLLECTION }



Art Gallery
FABRICS

FREE PROJECT SHEET

DESIGNED BY **FRANCES** NEWCOMBE

QUILT DESIGNED BY FRANCES^{NEWCOMBE}

SAFARI STARS

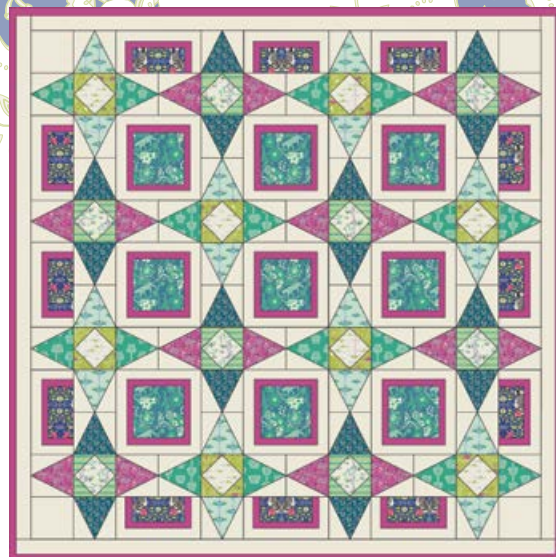
FINISHED SIZE: 76" X 76"

To download the instructions
for this pattern visit

artgalleryfabrics.com

KIT QUANTITY

SFR-7701	½ yd
SFR-7705	½ yd
SFR-7709	½ yd
SFR-7706	½ yd
SFR-6702	½ yd
SFR-7707	1 ½ yd
SFR-7704	½ yd
SFR-7708	1 ½ yd
SFR-6710	1 yd
SFR-7700	58 yd
PE-401	1 1 ½ yd
PE-433	3 1 ½ yd.
Backing	5 yd.



ADDITIONAL
BLENDER USED
PE-401 Verve Violet

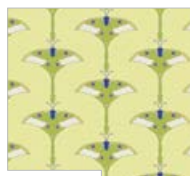


ADDITIONAL
BLENDER USED
PE-433 Snow

EXPEDITION BLUE



SFR-6700
Wild Life Cavern



SFR-6701
Moonmoth Bright



SFR-6702
Village Horizon Rise



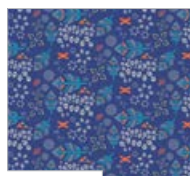
SFR-6703
River Shadows
Chartreuse



SFR-6704
Soaring Free Clear



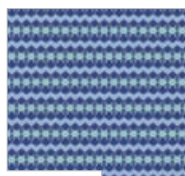
SFR-6705
African Palm Indigo



SFR-6706
Forest Leaves Larkspur



SFR-6707
Overland
Journey Orange

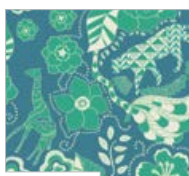


RPT-6708
Tribal Stripe Pond



RPT-6710
Animalia Splendor

EXPEDITION TEAL



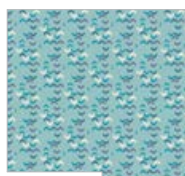
SFR-7700
Wild Life Waterfall



SFR-7701
Moonmoth Dusty



SFR-7702
Village Horizon Set



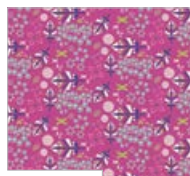
SFR-7703
River Shadows
Rain



SFR-7704
Soaring Free Cloudy



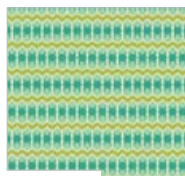
SFR-7705
African
Palm Turquoise



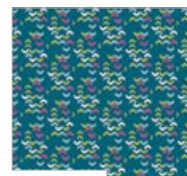
SFR-7706
Forest Leaves Raspberry



SFR-7707
Overland
Journey Lime



SFR-7708
Tribal Stripe
Grass



SFR-7709
River Shadows
Midnight



FINISHED SIZE: 76" X 76"
FINISHED BLOCK SIZE: 6" X 6"

FABRIC REQUIREMENTS

Fabric A	SFR-7701	1/2 yd.
Fabric B	SFR-7705	1/2 yd.
Fabric C	SFR-7709	1/2 yd.
Fabric D	SFR-7706	1/2 yd.
Fabric E	SFR-6702	1/2 yd.
Fabric F	SFR-7707	1/3 yd.
Fabric G	SFR-7704	1/2 yd.
Fabric H	SFR-7708	1/3 yd.
Fabric I	SFR-6710	1 yd.
Fabric J	SFR-7700	5/8 yd.
Fabric K	PE-401	1 1/8 yd.
Fabric L	PE-433	3 1/8 yd.

Backing Fabric
SFR-7701 5 yds. (suggested)

Binding Fabric
PE-401 (Fabric **K**) (included)

TEMPLATES FOR THIS QUILT
ARE PROVIDED BELOW

Optional:
"Tri-Recs Triangle" ruler by EZ
Wrights.

CUTTING DIRECTIONS

1/4" seam allowances are included.

FOR BLOCKS 1a, 1b, 1c, and 1d CUT:

Two (2) 6 1/2" x WOF from Fabric **A**

Two (2) 6 1/2" x WOF from Fabric **B**

Two (2) 6 1/2" x WOF from Fabric **C**

Two (2) 6 1/2" x WOF from Fabric **D**

From each of the four fabrics, cut 16 (sixteen) "main" triangles using the template, placing it on the right side of the fabric. (Or if using Tri-Recs ruler, cut 16 (sixteen) "Tri" triangles following the directions provided with the ruler.)

Eight (8) 6 1/2" x WOF from Fabric **L**

Cut 64 (sixty-four) "left side" triangles and 64 (sixty-four) "right side" triangles using the templates, placing the templates on the right side of the fabric. (Or if using Tri-Recs ruler, cut 64 (sixty-four) "Right Recs" and 64 (sixty-four) "Left Recs" triangles.)

FOR BLOCKS 2a AND 2b CUT:

Eight (8) 6 1/2" squares from Fabric **E**

Eight (8) 6 1/2" squares from Fabric **G**

Thirty-two (32) 3 1/2" squares Fabric **F**

Thirty-two (32) 3 1/2" squares Fabric **H**

FOR BLOCK 3 CUT:

"Fussy Cut" 6 (six) 8" x 4 1/4" rectangles from Fabric **I** for horizontally oriented blocks.

"Fussy Cut" 6 (six) 4 1/4" x 8" rectangles from Fabric **I** for vertically oriented blocks.

Twenty-four (24) 1 1/4" x 4 1/4" rectangles from Fabric **K**

Twelve (12) 1 1/4" x 9 1/2" rectangles from Fabric **K**

Twenty-four (24) 2" x 5" rectangles from Fabric **L**

Twelve (12) 2" x 12 1/2" rectangles from Fabric **L**

FOR BLOCK 4 CUT:

Nine (9) 8" squares from Fabric **J**

Eighteen (18) 1 1/4" x 8" rectangles from Fabric **K**

Eighteen (18) 1 1/4" x 9 1/2" rectangles from Fabric **K**

Eighteen (18) 2" x 9 1/2" rectangles from Fabric **L**

Eighteen (18) 2" x 12 1/2" rectangles from Fabric **L**

FOR BLOCKS 5 CUT:

Four (4) 6 1/2" squares from Fabric **L**

CUTTING DIRECTIONS (CONTD)

1/4" seam allowances are included.

FOR BORDERS CUT:

8 (eight) 2 1/2" x WOF strips from Fabric **L**

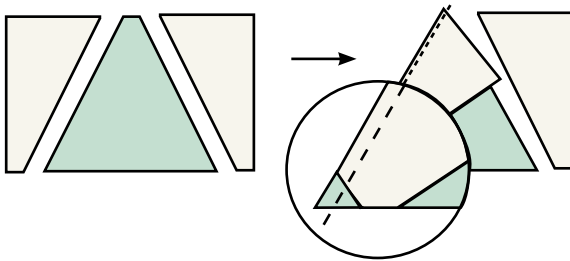
BLOCK CONSTRUCTION

Sew all rights sides together with 1/4" seam allowance. Press open.

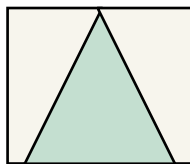
BLOCKS 1a, 1b, 1c, 1d

- With right sides together, lay one Fabric **L** "left side" triangle on the left side of the Fabric **A** "main" triangle, aligning the notch on the "left side" triangle with the bottom of the "main" triangle.
- Align the long edges as shown and stitch (DIAGRAM 1).
- Press towards Fabric **L**.

(DIAGRAM 1)



- With right sides together, sew the Fabric **L** "right side" triangle to the right side of the Fabric **A** "main" triangle to complete the square. Press toward Fabric **L**. Trim the "dog-ears".

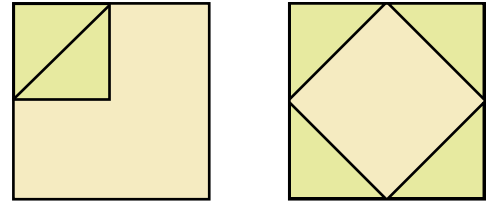


- Make 16 blocks using Fabric **A** and Fabric **L**. These are the **1a** Blocks.
- Make 16 blocks using Fabric **B** and Fabric **L**. These are the **1b** Blocks.
- Make 16 blocks using Fabric **C** and Fabric **L**. These are the **1c** Blocks.
- Make 16 blocks using Fabric **D** and Fabric **L**. These are the **1d** Blocks.

BLOCKS 2a and 2b

- Draw a diagonal line on the wrong side of the 32 Fabric **F** squares. Place the square on the corner of the Fabric **E** square.
- Sew on the drawn line. Trim away the excess fabric leaving a 1/4" seam allowance.
- Press towards Fabric **F**. Repeat the process, sewing three more Fabric **F** squares to the remaining three corners of the Fabric **E** squares (DIAGRAM 2).

(DIAGRAM 2)



- Make eight of these **2a** BLOCKS using Fabric **E** and Fabric **F**.
- Repeat the process sewing four Fabric **H** squares to a Fabric **G** square.
- Make eight of these **2b** BLOCKS.

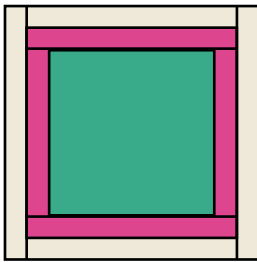
BLOCK 3

- Sew a 1 1/4" x 4 1/4" Fabric **K** rectangle to the left side of a Fabric **I** rectangle.
- Press towards Fabric **K**.
- Sew a second 1 1/4" x 4 1/4" Fabric **K** rectangle to the right side of the Fabric **I** rectangle.
- Press towards Fabric **K**.
- Sew a 1 1/4" x 9 1/2" Fabric **K** rectangle to the top of the Fabric **I** rectangle.
- Press towards Fabric **K**.
- Sew a 2" x 5" Fabric **L** rectangle to the left side of block unit from the previous step.
- Press towards Fabric **L**. Sew a second 2" x 5" Fabric **L** rectangle to the opposite side of the unit.
- Press towards Fabric **L**.
- Sew a 2" x 12 1/2" Fabric **L** rectangle to the top of the unit. Press toward Fabric **L**.
- Make six of these blocks with the zebras oriented vertically (just one zebra) and six blocks with the zebras oriented horizontally.



BLOCK 4

- Sew a 1 1/4" x 8" Fabric **K** rectangle to each side of an 8" Fabric **J** square.
- Press towards Fabric **K**.
- Sew a 1 1/4" x 9 1/2" Fabric **K** rectangle to the top and bottom of the Fabric **J** square.
- Press towards Fabric **K**.
- Sew a 2" x 9 1/2" Fabric **L** rectangle to each side of the unit formed in the previous step.
- Press toward Fabric **L**.
- Sew a 2" x 12 1/2" Fabric **L** rectangle to the top and bottom of the unit.
- Press toward Fabric **L**.
- Make nine of these blocks.



ASSEMBLING THE TOP

Sew all rights sides together with 1/4" seam allowance. Press open.

- Refer to the cover photo to aid you in block placement.
- You will construct the top by completing each of the rows, then sewing the rows together. However, rows 3 and 4, rows 6 and 7, and rows 9 and 10 will be sewn together first to make "double width rows".
- To make the double width rows, first sew **1a** and **1c** blocks together, matching the points. Make twelve of these units.
- Following the cover photo, sew the blocks together into rows in the following sequence:
- **Row 1:** Block **5**, **1a**, **3** (horizontal), **1c**, **3** (horizontal), **1a**, **3** (horizontal), **1a**, block **5**
- **Row 2:** **1b**, **2a**, **1b**, **1d**, **2b**, **1d**, **1b**, **2a**, **1b**, **1d**, **2b**, **1d**
- **Row 3/4:** Block **3** (vertical), **1a/1c** unit, block **4**, **1c/1a** unit, block **4**, **1a/1c** unit, block **4**, **1c/1a** unit, block **3** (vertical)
- **Row 5:** **1d**, **2b**, **1d**, **1b**, **2a**, **1b**, **1d**, **2b**, **1d**, **1b**, **2a**, **1b**
- **Row 6/7:** Block **3** (vertical) **1c/1a** unit, **4**, **1a/1c** unit, block **4**, **1c/1a** unit, block **4**, **1a/1c** unit, block **3** (vertical)

- **Row 8:** **1b**, **2a**, **1b**, **1d**, **2b**, **1d**, **1b**, **2a**, **1b**, **1d**, **2b**, **1d**
- **Row 9/10:** Block **3** (vertical), **1a/1c** unit, block **4**, **1c/1a** unit, block **4**, **1a/1c** unit, block **4**, **1c/1a** unit, block **3** (vertical)
- **Row 11:** **1d**, **2b**, **1d**, **1b**, **2a**, **1b**, **1d**, **2b**, **1d**, **1b**, **2a**, **1b**
- **Row 12:** Block **5**, **1c**, block **3** (horizontal), **1a**, block **3** (horizontal), **1c**, block **3** (horizontal), **1a**, block **5**
- Press blocks in rows in opposite direction. Sew rows together, matching seams until all rows have been joined.

BORDER ASSEMBLY

Sew all rights sides together with 1/4" seam allowance. Press open.

- Join the 8 (eight) border pieces together to form one long border piece.
- Measure vertically through the center of the quilt top. Cut two border pieces to that measurement.
- Sew one to each side of the quilt top.
- Press towards the border.
- Measure horizontally through the center of the quilt top. Cut two border pieces to that measurement.
- Sew one to the top and one to the bottom of the quilt top.
- Press towards the borders

QUILT ASSEMBLY

Sew right sides together.

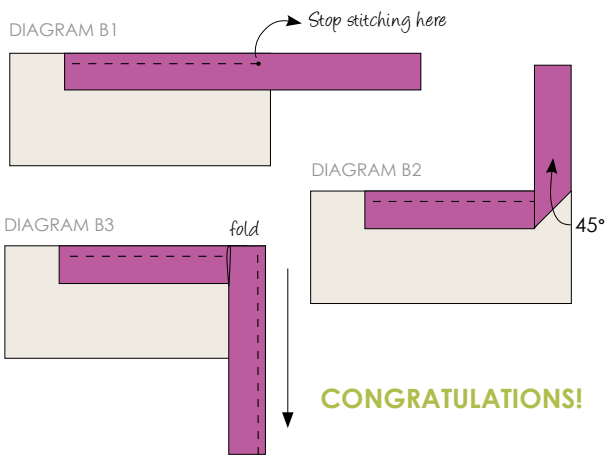
- Place BACKING FABRIC on a large surface wrong side up. Stretch it with masking tape against that surface.
- Place BATTING on top of backing fabric.
- Place TOP on top of the batting with right side facing up. Smooth away wrinkles using your hands.
- Pin all layers together and baste with basting thread, using long stitches. You can also use safety pins to join the layers.
- Machine or hand quilt starting at the center and working towards the corners. Remember that quilting motives are a matter of personal preference. Have fun choosing yours!
- After you finished, trim excess of any fabric or batting, squaring the quilt to proceed to bind it.



BINDING

Sew right sides together.

- Cut enough strips $1\frac{1}{2}$ " wide by the width of the fabric **K** to make a final strip $31\frac{1}{4}$ " long. Start sewing the binding strip in the middle of one of the sides of the quilt, placing the strip right side down and leaving an approximated 5" tail. Sew with $\frac{1}{4}$ " seam allowance (using straight stitch), aligning the strip's raw edge with the quilt top's raw edge.
- Stop stitching $\frac{1}{4}$ " before the edge of the quilt (DIAGRAM B1). Clip the threads. Remove the quilt from under the machine presser foot. Fold the strip in a motion of 45° and upward, pressing with your fingers (DIAGRAM B2). Hold this fold with your finger, bring the strip down in line with the next edge, making a horizontal fold that aligns with the top edge of the quilt (DIAGRAM B3). Start sewing at $\frac{1}{4}$ " of the border, stitching all the layers. Do the same in the four corners of the quilt.
- Stop stitching before you reach the last 5 or 6 inches. Cut the threads and remove the quilt from under the machine presser foot. Lay the loose ends of the binding flat along the quilt edge, folding the ends back on themselves where they meet. Press them together to form a crease. Using this crease as the stitching line, sew the two open ends of the binding with right sides together (you can help yourself marking with a pencil if the crease is difficult to see).
- Trim seam to $\frac{1}{4}$ " and press open. Complete the sewing. Turn binding to back of the quilt, turn raw edge inside and stitch by hand using blind stitch.



Feel the difference
For more free patterns visit:

artgalleryfabrics.com

NOTE: While all possible care has been taken to ensure the accuracy of this pattern, we are not responsible for printing errors or the way in which individual work varies. Please read instructions carefully before starting the construction of this quilt. If desired, wash and iron your fabrics before starting to cut.

© 2013 Courtesy of Art Gallery Quilts LLC.
All Rights Reserved.

