

{ FEATURING **LEGACY** COLLECTION }



FREE PROJECT SHEET

DESIGNED BY ANGELA WALTERS

Roots

FINISHED SIZE: 50 1/2" x 60 1/2"
BLOCK SIZE: 10 1/2" x 10 1/2"

artgalleryfabrics.com

KIT QUANTITY

LGY-8305	1 1/8 yd.
LGY-8308	3/4 yd.
LGY-8309	1 1/8 yd.
LGY-8301	7/8 yd.
PE-428	3/8 yd.
Backing	4 yd.

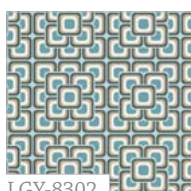


Legacy by ANGELA WALTERS

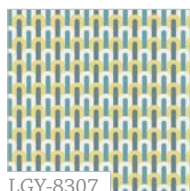
TOPAZ TRADITIONS



LGY-8300
Familiar Roots Willow



LGY-8302
Grand Mosaic Blue



LGY-8307
Décoratifs Lemon



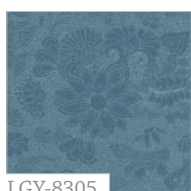
LGY-8304
Lineage Terra



LGY-8306
Ancestry Foliage



LGY-8303
Stitched Heritage Glow



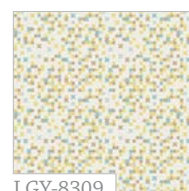
LGY-8305
Drawn Destiny Denim



LGY-8301
Traces of Stillwater



LGY-8308
Genealogy Azul

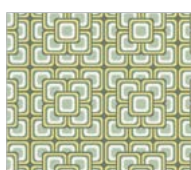


LGY-8309
Genealogy Oro

JADE INHERITANCE



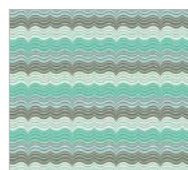
LGY-9300
Familiar Roots Birch



LGY-9302
Grand Mosaic Lime



LGY-9307
Décoratifs Spearmint



LGY-9304
Lineage Aqua



LGY-9306
Ancestry Mineral



LGY-9303
Stitched Heritage Shadow



LGY-9305
Drawn Destiny Linen



LGY-9301
Traces of Teal



LGY-9310
Classic Tiles Mist



LGY-9311
Classic Tiles Custard



Roots

FINISHED SIZE: 50 1/2" x 60 1/2"
BLOCK SIZE: 10 1/2" x 10 1/2"

FABRIC REQUIREMENTS

Fabric **A** LGY-8305 1 1/8 yd.
Fabric **B** LGY-8308 3/4 yd.
Fabric **C** LGY-8309 1 1/8 yd.
Fabric **D** LGY-8301 7/8 yd.
Fabric **E** PE-428 3/8 yd.

Backing Fabric
4 yd. (suggested)

Binding Fabric
PE-428 (Fabric **E**) (included)

NOTE: While all possible care has been taken to ensure the accuracy of this pattern, we are not responsible for printing errors or the way in which individual work varies. Please read instructions carefully before starting the construction of this quilt. If desired, wash and iron your fabrics before starting to cut.

© 2013 Courtesy of Art Gallery Quilts LLC.
All Rights Reserved.

CUTTING DIRECTIONS

1/4" seam allowances are included.

FOR ALL BLOCKS CUT

Fabric **A**

Three (3) strips 10 1/2" x WOF
subcut into 9 squares 10 1/2" x 10 1/2"

Cut 2 strips 3 1/2" x WOF
subcut into 14 squares 3 1/2" x 3 1/2"

Fabric **B**

Two (2) strips 10 1/2" x WOF
subcut into 5 squares 10 1/2" x 10 1/2"

One (1) strip 3 1/2" x WOF
subcut into 10 squares 3 1/2" x 3 1/2"

Fabric **C**

Cut 3 strips 10 1/2" x WOF
subcut into 9 squares 10 1/2" x 10 1/2"

Cut 1 strips 3 1/2" x WOF
subcut into 5 squares 3 1/2" x 3 1/2"

Fabric **D**

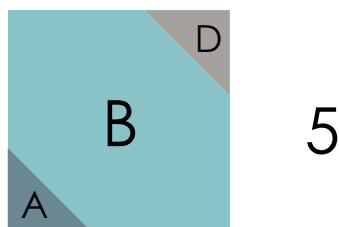
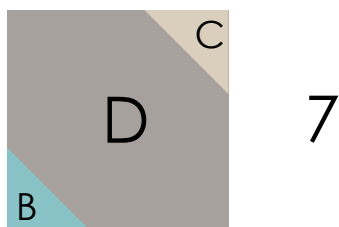
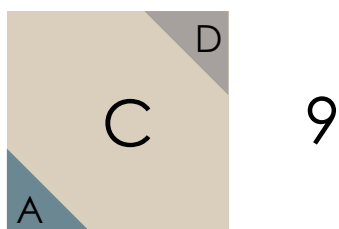
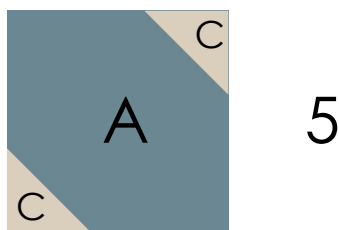
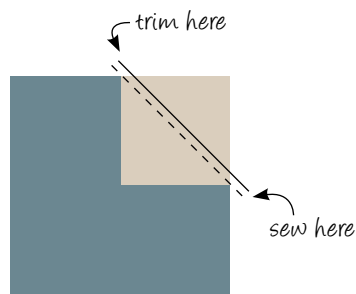
Two (2) strips 10 1/2" x WOF
subcut into 7 squares 10 1/2" x 10 1/2"

Two (2) strips 3 1/2" x WOF
subcut into 14 squares 3 1/2" x 3 1/2"

BLOCK CONSTRUCTION

Sew all right sides together with 1/4" seam allowance. Press open.

- To make each block, lay one 3 1/2" square of fabric on the corner of a 10 1/2" square block, so that the top and right edges line up.
- Carefully trace a line from the top left corner of the 3 1/2" block to the bottom right corner.
- Sew on top of the line
- Trim the outside corner, 1/4" from the seam.
- Iron block open and repeat with the opposite corner.
- Referring to the chart, piece the blocks using the 10 1/2" and 3 1/2" squares



QUILT ASSEMBLY

Sew right sides together.

- Place BACKING FABRIC on a large surface wrong side up. Stretch it with masking tape against that surface.
- Make sure that you center the top and the backing since this quilt has the special design for the backing
- Place BATTING on top of backing fabric.
- Place TOP on top of the batting with right side facing up. Smooth away wrinkles using your hands.
- Pin all layers together and baste with basting thread, using long stitches. You can also use safety pins to join the layers.
- Machine or hand quilt starting at the center and working towards the corners. Remember that quilting motives are a matter of personal preference. Have fun choosing yours!
- After you finished, trim excess of any fabric or batting, squaring the quilt to proceed to bind it.

BINDING

Sew right sides together.

- Cut enough strips 1½" wide by the width of the fabric **E** to make a final strip 232" long. Start sewing the binding strip in the middle of one of the sides of the quilt, placing the strip right side down and leaving an approximated 5" tail. Sew with ¼" seam allowance (using straight stitch), aligning the strip's raw edge with the quilt top's raw edge.
- Stop stitching ¼" before the edge of the quilt (DIAGRAM B 1). Clip the threads. Remove the quilt from under the machine presser foot. Fold the strip in a motion of 45° and upward, pressing with your fingers (DIAGRAM B2). Hold this fold with your finger, bring the strip down in line with the next edge, making a horizontal fold that aligns with the top edge of the quilt (DIAGRAM B3). Start sewing at ¼" of the border, stitching all the layers. Do the same in the four corners of the quilt.
- Stop stitching before you reach the last 5 or 6 inches. Cut the threads and remove the quilt from under the machine presser foot. Lay the loose ends of the binding flat along the quilt edge, folding the ends back on themselves where they meet. Press them together to form a crease. Using this crease as the stitching line, sew the two open ends of the binding with right sides together (you can help yourself marking with a pencil if the crease is difficult to see).
- Trim seam to ¼" and press open. Complete the sewing. Turn binding to back of the quilt, turn raw edge inside and stitch by hand using blind stitch.

- Follow cover photo to assemble quilt top

DIAGRAM B1

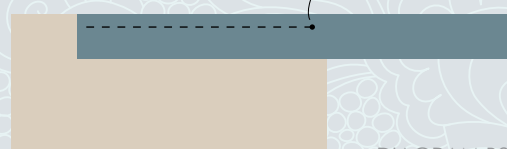


DIAGRAM B2

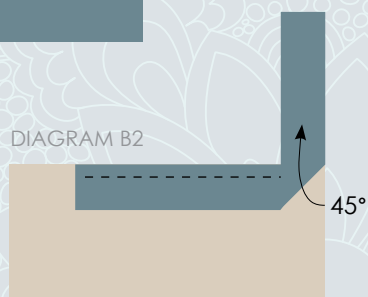
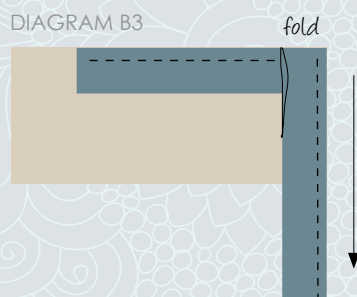


DIAGRAM B3



CONGRATULATIONS!



Feel the difference

For wholesale visit:

artgalleryfabrics.com

NOTE: While all possible care has been taken to ensure the accuracy of this pattern, we are not responsible for printing errors or the way in which individual work varies. Please read instructions carefully before starting the construction of this quilt. If desired, wash and iron your fabrics before starting to cut.

© 2013 Courtesy of Art Gallery Quilts LLC.
All Rights Reserved.