

Rhomburie



Art Gallery
FABRICS

FREE PROJECT SHEET

DESIGNED WITH LOVE BY Pat Bravo



QUILT DESIGNED WITH LOVE
BY PAT BRAVO

FABRICS DESIGNED BY
AGF IN-HOUSE STUDIO AND PAT BRAVO
FOR ART GALLERY FABRICS



Rhomburie

Finished Size: 62 1/2" x 57"

FABRIC REQUIREMENTS

Fabric A	RHA-504	3/8 yd.
Fabric B	PE-408	1 5/8 yd.
Fabric C	BE-6101	3/8 yd.
Fabric D	POE-806	5/8 yd.
Fabric E	BE-6104	3/8 yd.
Fabric F	CO-9200	3/8 yd.
Fabric G	HG-8406	1/2 yd.
Fabric H	PE-428	1/4 yd.

Binding fabric

POE-806 (FABRIC **D**) *(included)*

Backing fabric

PE-428 3 3/4 yd. *(suggested)*



RHA-504
Terra Stamps Smoke



PE-408
White Linen



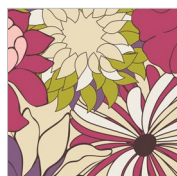
BE-6101
Fashion Mood Bright



POE-806
Spirited Verse Azure



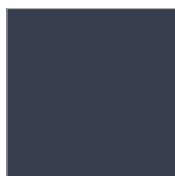
BE-6104
Millefiori Dark



CO-9200
Flower Bed Blush



HG-8406
Fantasy Roads Red



PE-428
Nocturnal

other materials

60° Triangle Ruler 3"-9" **OPTIONAL**

*If you do not have the ruler, use
the template provided at the
the end of this pdf.*



CUTTING DIRECTIONS

(1/4" seam allowances are included)

FOR COLUMNS CUT

Four (4) 2" x 44" strips from fabric **A**

Nine (9) 1 1/2" x 44" strips from fabrics **B**

Twelve (12) 3 1/2" x 16 1/2" strips from fabric **B**

Four (4) 2 1/2" x 44" strips from fabrics **C**

Four (4) 3" x 44" strips from fabrics **D**

Five (5) 2" x 44" strips from fabrics **E**

Five (5) 2 1/2" x 44" strips from fabrics **F**

Five (5) 3" x 44" strips from fabrics **G**

FOR BORDERS CUT

Inner Border

Two (2) 3 1/2" x 48" strips from fabric **B***

Two (2) 3 1/2" x 47 1/2" strips from fabric **B***

Middle Border

Four (4) 2" x 22 3/4" strips from fabric **H**

Four (4) 2" x 21 1/2" strips from fabric **H**

Eight (8) 2" x 4 1/2" strips from fabric **H**

Two (2) 2" x 10" strips from fabric **A**

Outer Border

Two 3 1/2" x 62 1/2" strips from fabric **B***

Two 3 1/2" x 51" strips from fabric **B***

** In order to get these long strips you need
to join two or more Width Of Fabric strips together.*





TRIANGLE CONSTRUCTION

The triangles are made in two different combinations with fabrics sewn together (sew with a 1/4" seam allowance).

FOR COMBINATION A

- Join together (on the long side) one strip from each of the following fabrics in this exact order (RIGHT sides facing together):

A, B, C, D, (DIAGRAM 1)

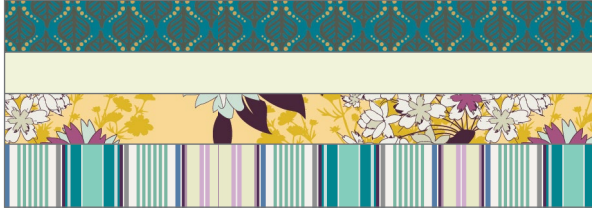


DIAGRAM 1

- Press open.
- Repeat for the remaining 3 (three) strips of each fabric, making four (4) sets of this combination.

FOR COMBINATION B

- Join together (on the long side) one strip from each of the following fabrics in this exact order (RIGHT sides facing together):

B, E, F, G, (DIAGRAM 2)

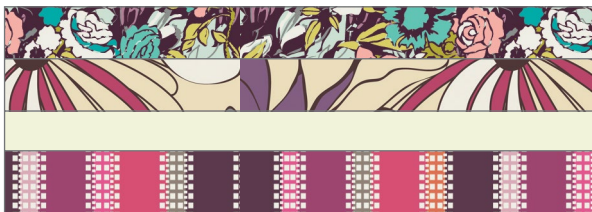


DIAGRAM 2

- Press open.
- Repeat for the remaining 4 (four) strips of each fabric, making five (5) sets of this combination.

MAKING THE TRIANGLES

- Grab one strip unit from combination **A** and the triangle ruler (if you do not have the ruler, use the template provided at the the end of the pdf).
- Position the ruler on top of the strip unit, aligning the base of the triangle ruler with the fabric **D** edge. Holding the ruler firmly in place, begin to cut the sides to complete the triangle.

(DIAGRAM 3)

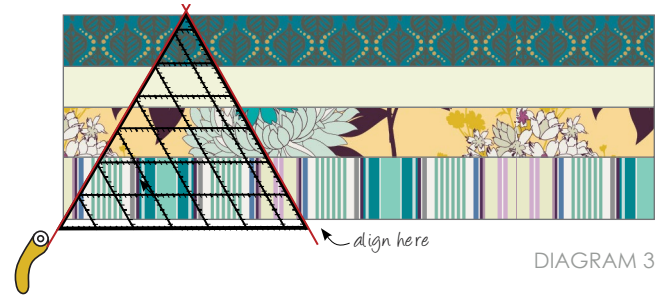


DIAGRAM 3

NOTE: If you DO have the ruler, align the fabric with the horizontal 8" mark. If you are using the template, you can align the edge of the fabric directly with the edge of the template's base.

- Flip the ruler over, align it with the fabric **A** edge, and cut the next triangle. (DIAGRAM 4)

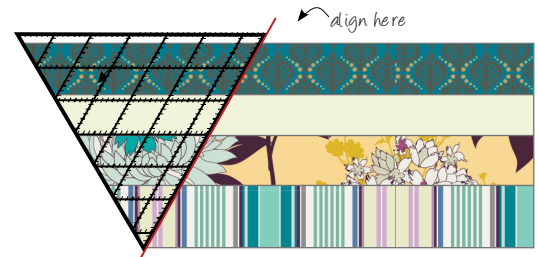


DIAGRAM 4

- In the same manner, you will continue cutting the triangles, flipping the ruler every other cut. (DIAGRAM 5)

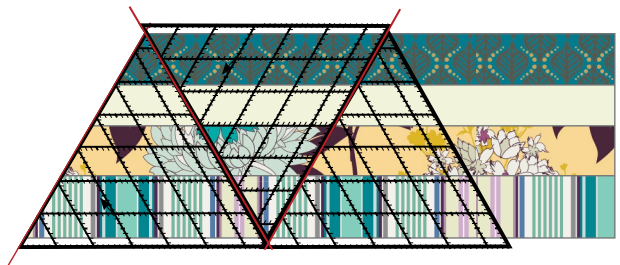


DIAGRAM 5

- Repeat the same steps for the rest of the strip units from combination **A** and the strip units from combination **B**

NOTE: From combination A, you will need 16 triangles with a fabric **D** (T1) base and 16 triangles with a fabric **A** base (T2). From combination B, you will need 16 triangles with a fabric **G** base (T3) and 17 triangles with a fabric **E** base (T4).

MAKING THE SASHING STRIPS

- Grab 3 of the 3 1/2" x 16 1/2" strips from fabric **B** and sew them together in order to make a strip that is 3 1/2" x 47 3/8". Press seams open. Repeat until you have four of these long strips.

ROW CONSTRUCTION

- In order to complete the triangle and sashing strip columns, you can follow the cover photo. We also provide this digital diagram which is explained horizontally (by rows) for better instruction purposes. Here are the four different triangles in their original position (DIAGRAM 6).

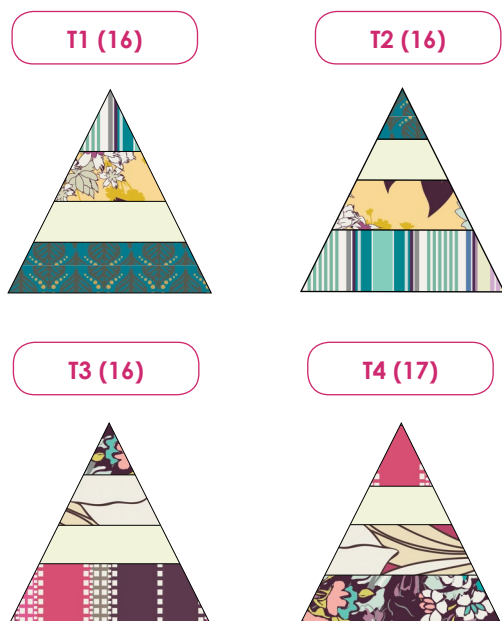


DIAGRAM 6

- First sew the triangle rows, attaching triangle to triangle following the table (DIAGRAM 7). To attach them correctly find the center of each side and align them from there.
- When sewing the triangle rows to the sashing, find the center of each of them and align from there.

DIAGRAM 7

1 st ROW:	T4-90° T1-45° T2-90° T3-45° T1-90° T4-45° T1-90° T3-45° T3-90° T2-45° T2-90° T4-45° T2-90°
2 nd ROW:	FABRIC B SASHING
3 rd ROW:	T4-45° T4-90° T2-45° T3-90° T1-45° T4-90° T1-45° T1-90° T3-45° T4-90° T2-45° T4-90° T2-45°
4 th ROW:	FABRIC B SASHING
5 th ROW:	T3-90° T4-45° T2-90° T3-45° T1-90° T4-45° T1-90° T1-45° T3-90° T4-45° T2-90° T4-45° T1-90°
6 th ROW:	FABRIC B SASHING
7 th ROW:	T3-45° T1-90° T2-45° T3-90° T1-45° T4-90° T1-45° T2-90° T3-45° T3-90° T2-45° T4-90° T1-45°
8 th ROW:	FABRIC B SASHING
9 th ROW:	T2-90° T1-45° T2-90° T3-45° T2-90° T4-45° T3-90° T2-45° T4-90° T3-45° T1-90° T4-45° T3-90°

NOTE: The rotation in which the angles are described follows a counterclockwise direction, similar to the way in which you would open a book.

- To trim the excess fabric, cut straight (use a ruler) through half of the triangles making sure the cut line is squared (perpendicular) to the length of the quilt (DIAGRAM 8).

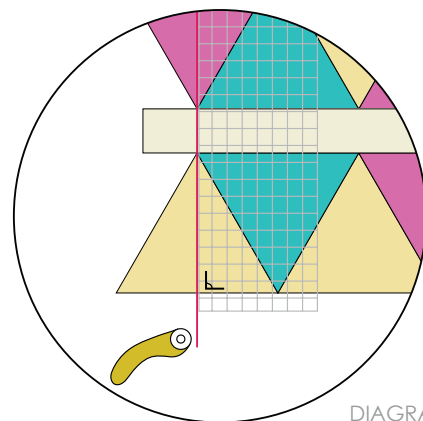


DIAGRAM 8

- Press the WHOLE TOP with a hot steam iron.



BORDER ASSEMBLY

Sew all rights sides together with 1/4" seam allowance. Press open.

MAKING THE MIDDLE BORDER

- Grab one of the 2" x 10" strips from fabric A and with the 60° ruler trim a corner with the angle going upward to the right. Proceed to cut 1 1/4" strips parallel to this angle until you have 6 pieces (DIAGRAM 9).

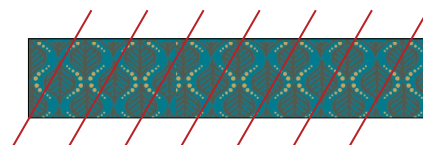


DIAGRAM 9

- Repeat the previous step with the 60° angle going upward to the left (DIAGRAM 10).

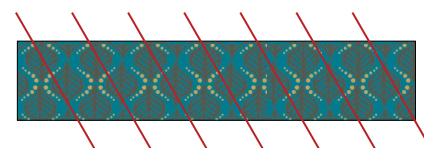


DIAGRAM 10

- Grab four of the 2" x 4 1/4" strips from fabric H and with the 60° ruler trim the corners with the angle going upward to the right (DIAGRAM 11).

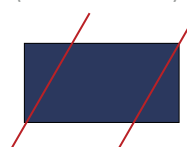


DIAGRAM 11

- Repeat the previous step with the 60° angle going upward to the left (DIAGRAM 12).

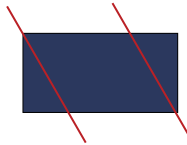


DIAGRAM 12

- Grab two of the 2" x 22 3/4" strips from fabric H and with the 60° ruler trim one corner with the angle going upward to the right (DIAGRAM 13).



DIAGRAM 13

- Repeat the previous step with two of the 2" x 21 1/2" strips from fabric H.
- Repeat the last two steps with the angle going upward to the left (DIAGRAM 14).



DIAGRAM 14

- Now you can proceed to construct the four middle borders. Two of them (the left side border and the top border) will have an angle that goes upward to the right. Please note that the left border uses the 2" x 22 3/4" strips from fabric H and the top border uses the 2" x 21 1/2" also from fabric H (DIAGRAM 15).



left middle border



top middle border

DIAGRAM 15

- The right and bottom borders will have an angle that goes upward to the left. Please note that the right border uses the 2" x 22 3/4" strips from fabric H and the bottom border uses the 2" x 21 1/2" also from fabric H (DIAGRAM 16).



right middle border



bottom middle border

DIAGRAM 16

ATTACHING THE BORDERS

- Now that you have all the borders ready you can begin to attach them to the main part of the quilt.
- Attach the *inner borders*. Start with the left and right borders. Press. Proceed to attach the top and bottom *inner borders*.
- Continue with the *middle borders*. Here you will also attach the left and right borders first. Press. Proceed to attach the top and bottom *middle borders*.
- Finally attach the *outer borders*. Here you will attach the top and bottom borders first. Press. Proceed to attach the left and right *outer borders*.



QUILT ASSEMBLY

Sew right sides together.

- Place BACKING FABRIC on a large surface wrong side up. Stretch it with masking tape against that surface.
- Place BATTING on top of backing fabric.
- Place TOP on top of the batting with right side facing up. Smooth away wrinkles using your hands.
- Pin all layers together and baste with basting thread, using long stitches. You can also use safety pins to join the layers.
- Machine or hand quilt starting at the center and working towards the corners. Remember that quilting motives are a matter of personal preference. Have fun choosing yours!
- After you finished, trim excess of any fabric or batting, squaring the quilt to proceed to bind it.





BINDING

Sew right sides together.

- Cut enough strips $1\frac{1}{2}$ " wide by the width of the fabric **D** to make a final strip 250" long. Start sewing the binding strip in the middle of one of the sides of the quilt, placing the strip right side down and leaving an approximated 5" tail. Sew with $\frac{1}{4}$ " seam allowance (using straight stitch), aligning the strip's raw edge with the quilt top's raw edge.
- Stop stitching $\frac{1}{4}$ " before the edge of the quilt (**DIAGRAM B 1**). Clip the threads. Remove the quilt from under the machine presser foot. Fold the strip in a motion of 45° and upward, pressing with your fingers (**DIAGRAM B2**). Hold this fold with your finger, bring the strip down in line with the next edge, making a horizontal fold that aligns with the top edge of the quilt (**DIAGRAM B3**). Start sewing at $\frac{1}{4}$ " of the border, stitching all the layers. Do the same in the four corners of the quilt.
- Stop stitching before you reach the last 5 or 6 inches. Cut the threads and remove the quilt from under the machine presser foot. Lay the loose ends of the binding flat along the quilt edge, folding the ends back on themselves where they meet. Press them together to form a crease. Using this crease as the stitching line, sew the two open ends of the binding with right sides together (you can help yourself marking with a pencil if the crease is difficult to see).
- Trim seam to $\frac{1}{4}$ " and press open. Complete the sewing. Turn binding to back of the quilt, turn raw edge inside and stitch by hand using blind stitch.

DIAGRAM B1

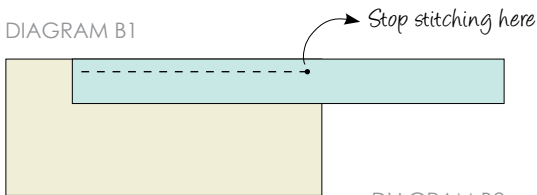
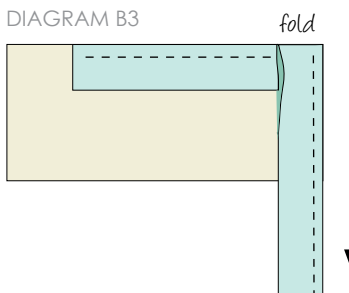


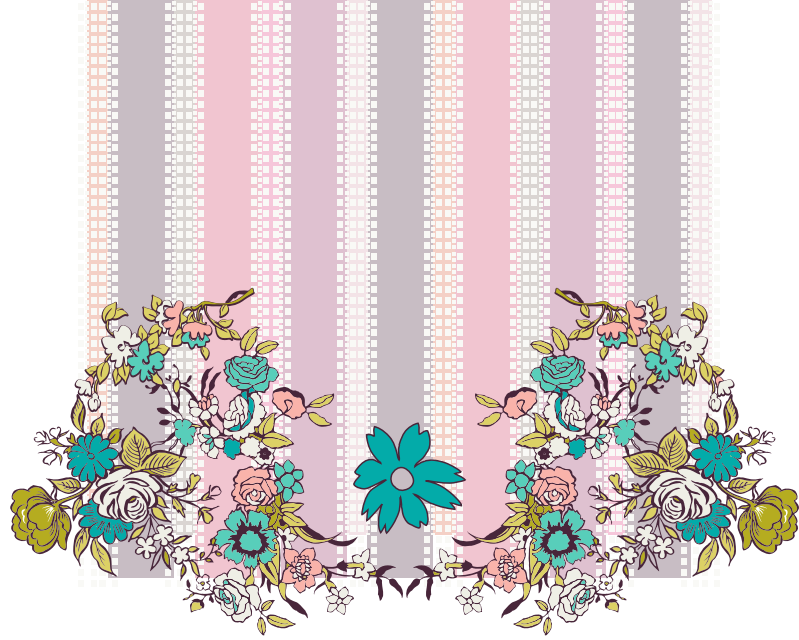
DIAGRAM B2



DIAGRAM B3



CONGRATULATIONS!



To see more patterns, fabrics,
and lots of inspiration visit:

patbravo.com



Feel the difference

artgalleryfabrics.com

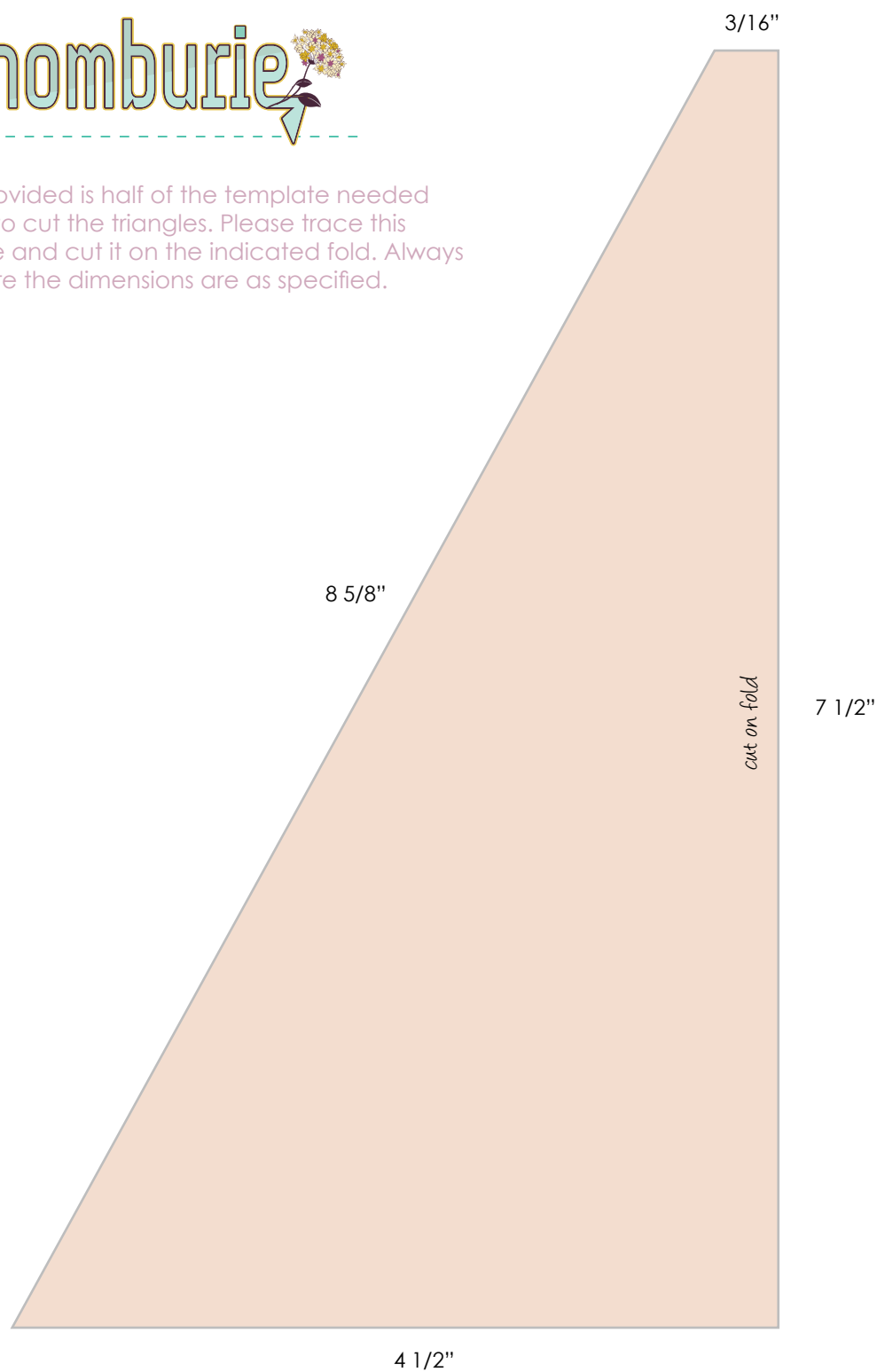
© 2012 Courtesy of Art Gallery Quilts LLC.
All Rights Reserved.

3804 N 29th Ave. Hollywood, FL 33020
PH: 888.420.5399 FX: 425.799.6103

NOTES: While all possible care has been taken to ensure the accuracy of this pattern, we are not responsible for printing errors or the way in which individual work varies.
Please read instructions carefully before starting the construction of this quilt. If desired, wash and iron your fabrics before starting to cut.

Rhomburie

NOTE: Provided is half of the template needed in order to cut the triangles. Please trace this template and cut it on the indicated fold. Always make sure the dimensions are as specified.



patbravo.com

artgalleryfabrics.com

