

PENTELIC MARVEL

{ FEATURING **ATHENA** COLLECTION }



FREE PROJECT SHEET

DESIGNED BY : AGF *studio*

PENTELIC MARVEL

artgalleryfabrics.com

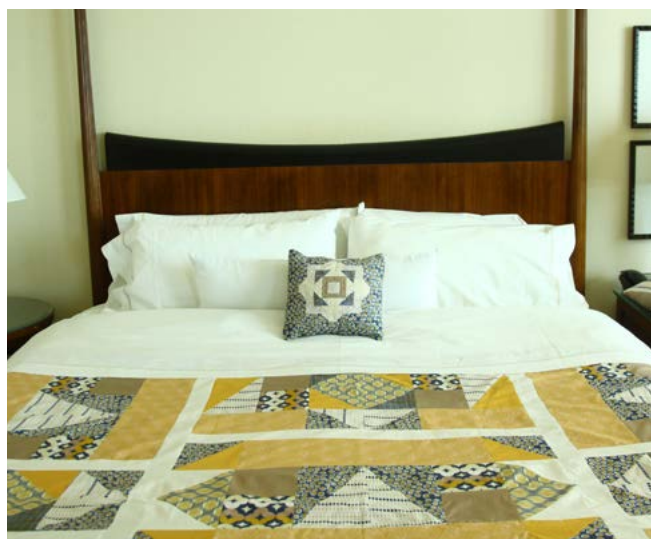


75" x 65"

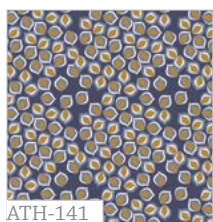
Featuring

ATHENA

by Angela Walters



QUILT DESIGNED BY AGF STUDIO



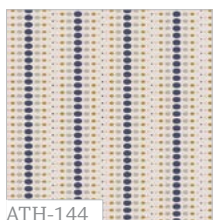
ATH-141
Laureate Deep



ATH-143
Acropolis columnsn Gilt



ATH-140
Aurora Medallions
Bronze



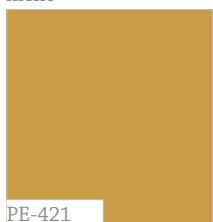
ATH-144
Cobblestones Parchment



ATH-145
Greek Temple Golden



ATH-148
Crosshatch Chromite



PE-421
Honey



PE-433
Snow



PE-445
Mink

FABRIC REQUIREMENTS

Fabric A	ATH - 141	3/4 yd.
Fabric B	ATH - 143	5/8 yd.
Fabric C	ATH - 140	3/8 yd.
Fabric D	ATH - 144	1 3/8 yd.
Fabric E	ATH - 145	1 3/8 yd.
Fabric F	ATH - 148	1/4 yd.
Fabric G	PE - 421	5/8 yd.
Fabric H	PE - 433	7/8 yd.
Fabric I	PE - 445	3/8 yd.

Binding	ATH - 144	
Backing	ATH - 148	4 1/4 yd.
(Suggested)		

CUTTING DIRECTIONS



Fourteen (14) 5 7/8" x 5 7/8" squares from Fabric

A

Five (5) 10 7/8" x 5 7/8" rectangles from Fabric **A**

Fourteen (14) 5 7/8" x 5 7/8" squares from Fabric

B

Fourteen (14) 5 1/2" x 5 1/2" squares from Fabric

C

Eight (8) 5 7/8" x 5 7/8" squares from Fabric **D**

Six (6) 10 7/8" x 10 7/8" rectangles from Fabric **D**

Ten (10) 5 1/2" x 20 1/2" rectangles from Fabric **E**

Eight (8) 5 1/2" x 10 1/2" rectangle from Fabric **E**

Four (4) 5 7/8" x 5 7/8" squares from Fabric **F**

Ten (10) 5 7/8" x 5 7/8" squares from Fabric **G**

Two (2) 10 7/8" x 5 7/8" rectangles from Fabric **G**

Six (6) 5 7/8" x 5 7/8" squares from Fabric **H**

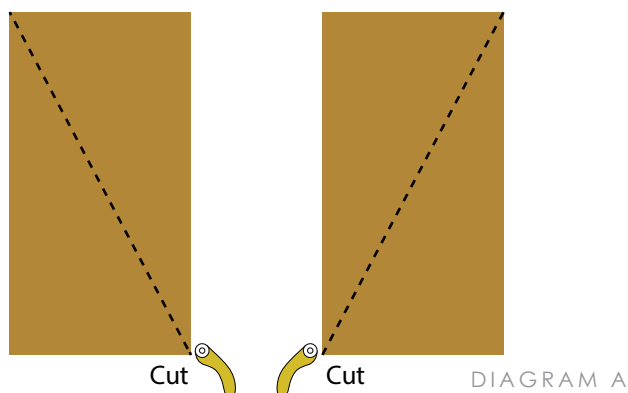
Fourteen (14) 5 1/2" x 5 1/2" squares from Fabric **I**

Sashing

Eight (8) 2 1/2" x WOF strips from Fabric **H**

Cut $5\frac{7}{8}$ " x $5\frac{7}{8}$ " squares from fabric **A, B, D, F** diagonally in half. **Important:** Cut 7 squares in Fabric **B** and 3 squares from fabric **D** diagonally with direction of the print vertical and the other 7 squares in fabric **B** and 3 squares from fabric **D** cut diagonally with the print horizontal. This step is important if you want the direction of the print to line up.

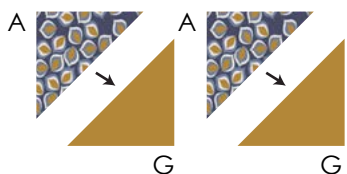
For $10\frac{7}{8}$ " x $5\frac{7}{8}$ " rectangles cut from fabric **A, D**, and **G** cut half of them diagonally to the left and the other half to the right. (Diagram A)



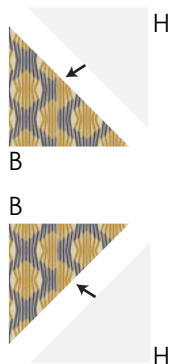
BLOCK CONSTRUCTION

Sew all rights sides together with $\frac{1}{4}$ " seam allowance. Press open.

- Three different blocks make up this quilt. Direction of blocks change so use quilt illustration as a guide. For the first block, sew two triangles from fabric **A** to two triangles from fabric **G**.



- Next sew two triangles from fabric **H** to two triangles from fabric **B**.
- Make sure one of the triangles from Fabric **B** is cut with the print cut vertical and the other triangle with the print cut horizontal. This will make the print match up.



- Now layout your 5 square pieces you made in diagram 1 and 2 following diagram 3. They should measure $5\frac{1}{2}$ " x $5\frac{1}{2}$ ".
- Sew square **A G** to square **H B**, sew this piece you created to another **H B** square and then sew that to a **A G** square.
- Piece should look like diagram 3b.

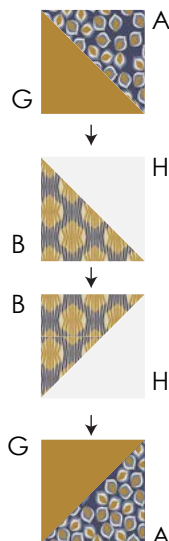


DIAGRAM 3a

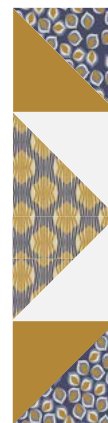


DIAGRAM 3b

- Take two triangles from fabric **A** and from fabric **D**.
- Like in diagram 2 make sure you match up the print.
- Lay it out following diagram one and sew together.
- Once you have triangles sewn together you will have two rectangles that should measure $10\frac{1}{2}$ x $5\frac{1}{2}$ ".
- Sew them both together following diagram 4b.

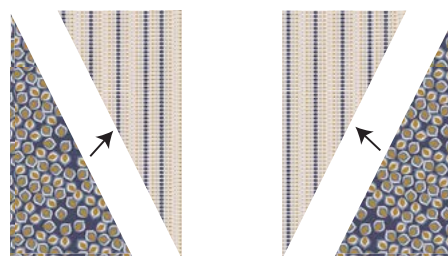


DIAGRAM 4a

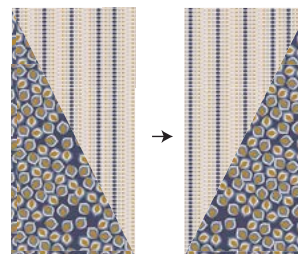


DIAGRAM 4b

- Take two 5 1/2" x 5 1/2" from fabric **I** and **C** and sew together following diagram 5.

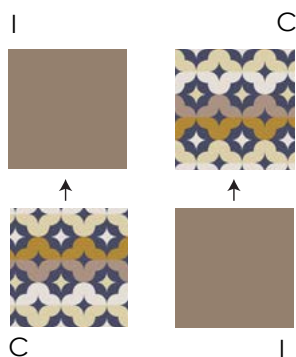


DIAGRAM 5

- Take piece made in diagram 4 and sew pieces made in diagram 5 to each side. Follow diagram 6.

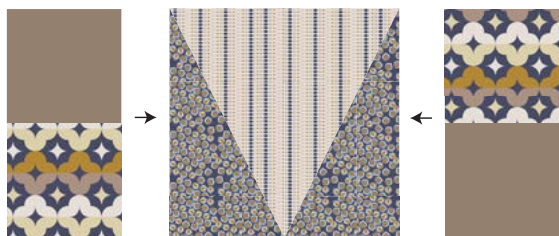


DIAGRAM 6

- Now take two 5 1/2" x 20 1/2" rectangles from fabric **E**. Sew one to the top and one to the bottom of the piece created in Diagram 6.

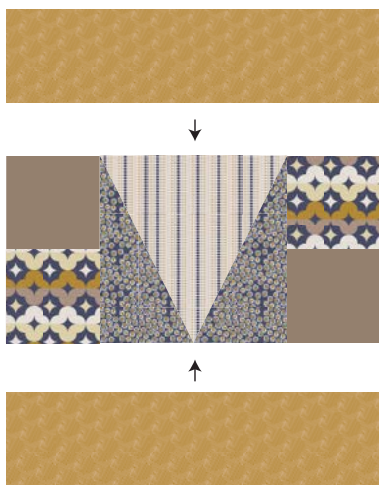


DIAGRAM 7

- Following diagram 8, take the piece made in diagram 3 and sew it to the piece made in diagram 7.

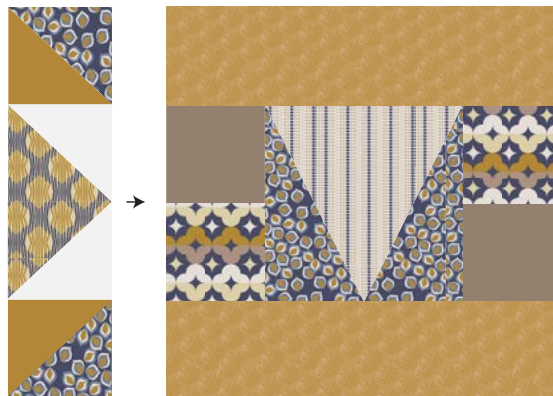


DIAGRAM 8

- Now you have completed your first block. You will need to make five in total.
- To create the middle block in the quilt you will add a piece like the one we sewed in diagram 3 to the other end of our block. It should look like diagram 9.

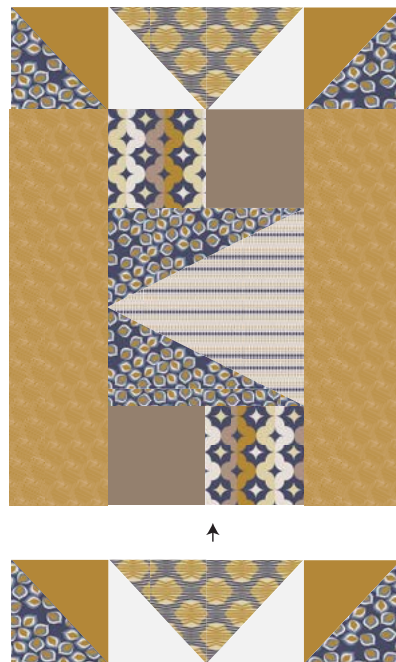


DIAGRAM 9

- To create the second block located at the middle top, bottom, and sides of the quilt, take four triangles from fabric **A** and **D**.
- Again make sure to match the direction of the print like we did in block 1.
- Sew triangles together following diagram 10.

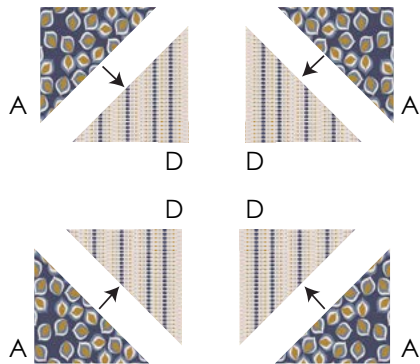


DIAGRAM 10

- Now you will need two triangles from fabric **G** and **F**. You will also need four triangles from fabric **B**.
- Layout triangles following diagram 11 and sew triangles together.

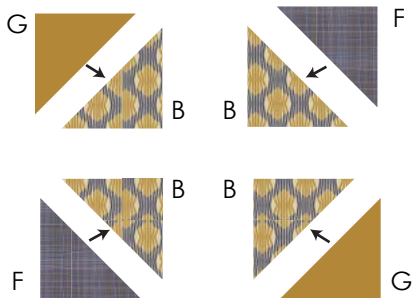


DIAGRAM 11

- Take all squares made in diagram 10 and 11 and arrange and sew them according to diagram 12.

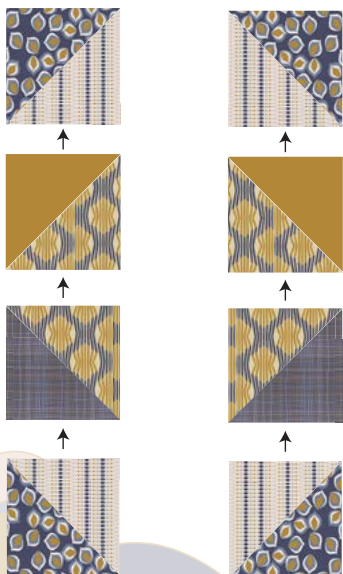


DIAGRAM 12

- Next sew pieces made in diagram 12 together make sure to match all seams. You will need to make four of these blocks.
- You are now finished with block 2!

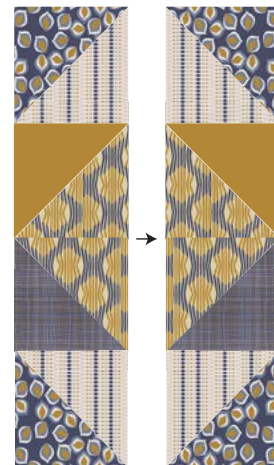


DIAGRAM 13

- For block 3 take one triangle from fabric **G** and **D**. Sew triangles together to form a $10 \frac{1}{2}$ " x $5 \frac{1}{2}$ " rectangle.

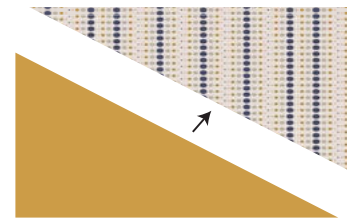


DIAGRAM 14

- Next take $5 \frac{1}{2}$ " x $5 \frac{1}{2}$ " square from fabric **I** and **C**. Sew together following diagram 15.



DIAGRAM 15

- Now sew the piece you made in diagram 15 to the top of the piece you made in diagram 14. Follow Diagram 16.

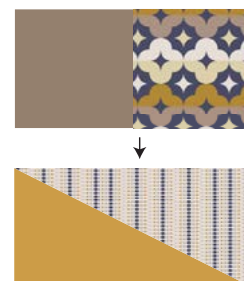


DIAGRAM 16

- Take two 5 1/2" x 10 1/2" rectangles from fabric **E** and sew them to each side of the piece created in diagram 16.
- Next you will repeat steps in diagram 14-16 mirroring the piece you just made.



DIAGRAM 17

- Take block 2 that you completed in diagram 13 and pieces you made in diagram 17. Layout and sew pieces according to diagram 18.
- You are now finished with all three blocks. You will need in total 2 of block 3.

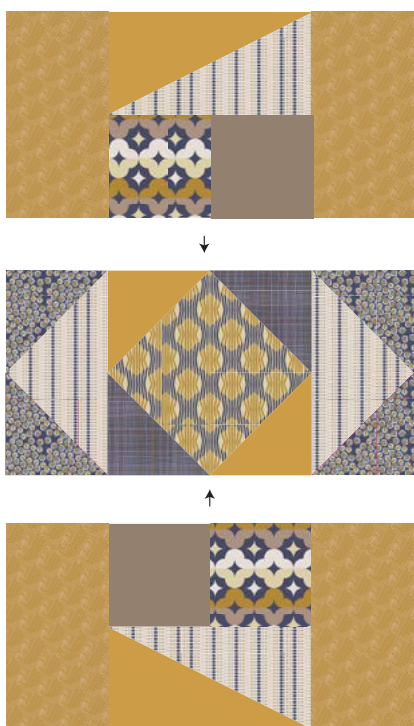


DIAGRAM 18

ASSEMBLING THE TOP

Sew all rights sides together with 1/4" seam allowance. Press open.

- Arrange blocks using illustration as a guide.
- You will need five of block 1, four of block 2, and two of block 3.

- For the vertical sashing take one 2 1/2" x WOF from fabric **H** and sew to the longest side of block 2. Cut off excess and use the rest to sew to the other side of the block. Repeat this step with another block 2.



DIAGRAM 19

- Next attach two of block 1 to each side, repeat for the bottom of the quilt. Follow steps in diagram 19 and 20 for the middle row of the quilt.

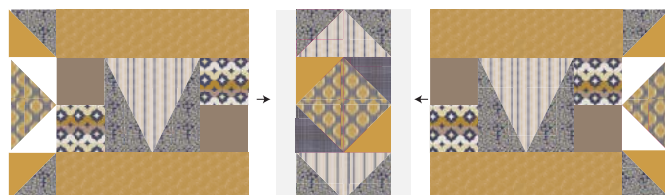


DIAGRAM 20

- Next take two 2 1/2"x WOF from fabric **H** and sew together matching the seam up with the center seam of the quilt. Sew one strip to the top and middle of the quilt and the other strip to the middle and bottom of the quilt.
- Cut off excess.

QUILT ASSEMBLY

Sew right sides together.

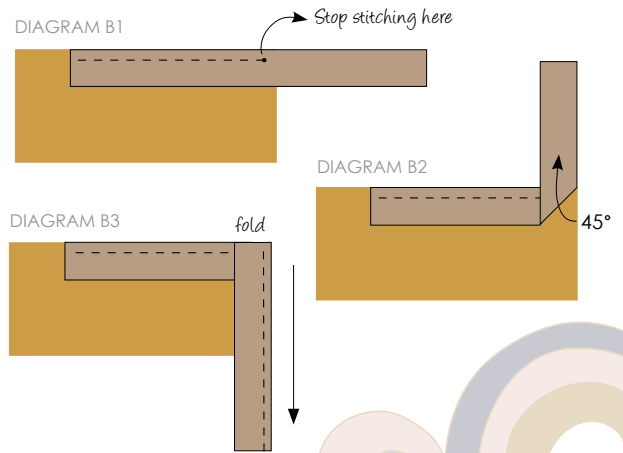
- Place BACKING FABRIC on a large surface wrong side up. Stretch it with masking tape against that surface.
- Place BATTING on top of backing fabric.
- Place TOP on top of the batting with right side facing up. Smooth away wrinkles using your hands.
- Pin all layers together and baste with basting thread, using long stitches. You can also use safety pins to join the layers.

- Machine or hand quilt starting at the center and working towards the corners. Remember that quilting motives are a matter of personal preference. Have fun choosing yours!
- After you finished, trim excess of any fabric or batting, squaring the quilt to proceed to bind it.

BINDING

Sew right sides together.

- Cut enough strips $1\frac{1}{2}$ " wide by the width of the fabric **ATH-144 (Fabric D)** to make a final strip 290" long. Start sewing the binding strip in the middle of one of the sides of the quilt, placing the strip right side down and leaving an approximated 5" tail. Sew with $\frac{1}{4}$ " seam allowance (using straight stitch), aligning the strip's raw edge with the quilt top's raw edge.
- Stop stitching $\frac{1}{4}$ " before the edge of the quilt (DIAGRAM B1). Clip the threads. Remove the quilt from under the machine presser foot. Fold the strip in a motion of 45° and upward, pressing with your fingers (DIAGRAM B2). Hold this fold with your finger, bring the strip down in line with the next edge, making a horizontal fold that aligns with the top edge of the quilt (DIAGRAM B3). Start sewing at $\frac{1}{4}$ " of the border, stitching all the layers. Do the same in the four corners of the quilt.
- Stop stitching before you reach the last 5 or 6 inches. Cut the threads and remove the quilt from under the machine presser foot. Lay the loose ends of the binding flat along the quilt edge, folding the ends back on themselves where they meet. Press them together to form a crease. Using this crease as the stitching line, sew the two open ends of the binding with right sides together (you can help yourself marking with a pencil if the crease is difficult to see).
- Trim seam to $\frac{1}{4}$ " and press open. Complete the sewing. Turn binding to back of the quilt, turn raw edge inside and stitch by hand using blind stitch.



enjoy!



Feel the difference

For more free patterns visit:

artgalleryfabrics.com

NOTE: While all possible care has been taken to ensure the accuracy of this pattern, we are not responsible for printing errors or the way in which individual work varies. Please read instructions carefully before starting the construction of this quilt. If desired, wash and iron your fabrics before starting to cut.

© 2014 Courtesy of Art Gallery Quilts LLC. All Rights Reserved.