

Orchestra

{ FEATURING POETICA COLLECTION }



Art Gallery
FABRICS

FREE PROJECT SHEET

DESIGNED WITH LOVE BY Pat Bravo

QUILT DESIGNED
WITH LOVE BY *Pat Bravo*

Orchestra

FINISHED SIZE: 97" x 84"
BLOCK SIZE: 13" x 13"

To download the instructions for
this pattern visit

artgalleryfabrics.com



ADDITIONAL
BLENDER USED
PE-408 White Linen



Poetica

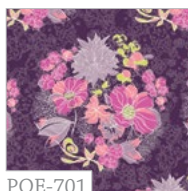
KIT QUANTITY

PE-408	4 5/8 yd.	POE-702	1 3/8 yd.
POE-701	1/2 yd.	POE-803	1 1/4 yd.
POE-703	3/4 yd.	POE-800	1 1/8 yd.
POE-707	1/4 yd.	POE-802	1 5/8 yd.
POE-801	3/4 yd.	Backing	8 yd.
POE-700	1 1/8 yd.		

ROSE BALLAD



POE-700
Sweet Melody Pure



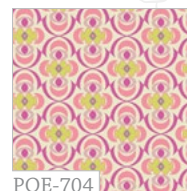
POE-701
Serenade Moonlight



POE-702
Delicate Duet Pink



POE-703
Heartbeats Radiant



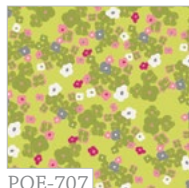
POE-704
Dancing the Tango



POE-705
Sonnet Ruby



POE-706
Spirited Verse Candy



POE-707
Love Notes Citron



POE-708
Rhythmic Rose



POE-709
Rhythmic Grey

SEAFOAM SYMPHONY



POE-800
Sweet Melody Aqua



POE-801
Serenade Daylight



POE-802
Delicate Duet Plum



POE-803
Heartbeats Cool



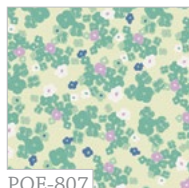
POE-804
Dancing the Waltz



POE-805
Sonnet Violet



POE-806
Spirited Verse Azure



POE-807
Love Notes Mint



POE-808
Rhythmic Sky



POE-809
Rhythmic Lilac





QUILT DESIGNED WITH
LOVE BY PAT BRAVO

Orchestra

Featuring **POETICA** COLLECTION

FINISHED SIZE: 97" × 84"
BLOCK SIZE: 13" × 13"

FABRIC REQUIREMENTS

Fabric A	PE-408	4 5/8 yd.
Fabric B	POE-701	1/2 yd.
Fabric C	POE-703	3/4 yd.
Fabric D	POE-707	1/4 yd.
Fabric E	POE-801	3/4 yd.
Fabric F	POE-700	1 1/8 yd.
Fabric G	POE-702	1 3/8 yd.
Fabric H	POE-803	1 1/4 yd.
Fabric I	POE-800	1 1/8 yd.
Fabric J	POE-802	1 5/8 yd.

Backing Fabric

POE-807 8 yd. (suggested)

Binding Fabric

POE-803 (Fabric **H**) (included)

NOTE: While all possible care has been taken to ensure the accuracy of this pattern, we are not responsible for printing errors or the way in which individual work varies. Please read instructions carefully before starting the construction of this quilt. If desired, wash and iron your fabrics before starting to cut.

© 2013 Courtesy of Art Gallery Quilts LLC.
All Rights Reserved.

FABRICS DESIGNED BY AGF-STUDIO
QUILT CONSTRUCTED BY PRISCILLA RAMIREZ FOR
ART GALLERY FABRICS



CUTTING DIRECTIONS

1/4" seam allowances are included.

FOR ALL BLOCKS CUT (42 blocks total)

Seventy-four (80) 2" × WOF strips from fabric **A**

Six (6) 2" × WOF strips from fabric **B**

Ten (10) 2" × WOF strips from fabric **C**

Two (2) 2" × 1 WOF strips from fabric **D**

Six (6) 2" × WOF strips from fabric **E**

Fifteen (15) 2" × WOF strips from fabric **F**

Six (6) 2" × WOF strips from fabric **G**

Ten (10) 2" × WOF strips from fabric **H**

Fifteen (15) 2" × WOF strips from fabric **I**

Six (6) 2" × WOF strips from fabric **J**

Separate all strips by fabric/print as you will grab a certain number of each at a time as specific parts of the block are explained.

FOR BORDERS CUT

Inner Border

Two 1 1/2" × 79 1/2" strips from fabric **G***

Two 1 1/2" × 93 3/4" strips from fabric **G***

Outer Border

Two 2 1/2" × 81 1/2" strips from fabric **J***

Two 2 1/2" × 97 3/4" strips from fabric **J***

* In order to get these long strips you need to join two or more Width Of Fabric strips together.

There are 2 different blocks in 2 different color combinations:

P1 BLOCK



11 BLOCKS TOTAL

P2 BLOCK



10 BLOCKS TOTAL

B1 BLOCK



10 BLOCKS TOTAL

B2 BLOCK



11 BLOCKS TOTAL



BLOCK CONSTRUCTION

Sew all right sides together with 1/4" seam allowance. Press open.

The block will be divided in 4 steps to make the assembly more convenient.

Step 1: Nine-patch Square

Combination a

- Grab 2 strips of fabric **H** and 1 strip of fabric **D**
- Sew them cross grain wise in the order **HDH**. (DIAGRAM 1)
- Proceed to cut 2" strips parallel to the selvage. You will have 21 strips in total for blocks **P1** and **P2**. (DIAGRAM 2)
- Set aside.



DIAGRAM 1

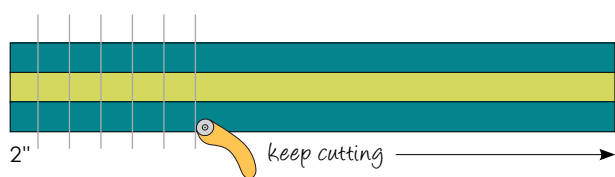


DIAGRAM 2

Combination b

- Repeat previous steps with fabrics **F** & **H**, in the order of **FHF** until you have a total of 42 strips. (DIAGRAM 3)



DIAGRAM 3

Combination c

- Repeat with fabrics **C** & **D**, in the order of **CDC** until you have a total of 21 strips. (DIAGRAM 4)



DIAGRAM 4

Combination d

- Repeat with fabrics **C** & **I**, in the order of **ICI** until you have a total of 42 strips. (DIAGRAM 5)



DIAGRAM 5

- Grab 2 combination b strips and 1 combination a strip at a time. Sew them together with a 1/4" seam allowance cross grain wise making sure that all seams match.
- Repeat until you have a total of 21 patches for the **P1** and **P2** blocks.
- The finished square should look as follows:



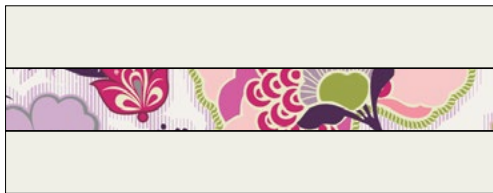
- Grab 2 combination d strips and 1 combination c strip at a time. Sew them together with a 1/4" seam allowance cross grain wise making sure that all seams match.
- Repeat until you have a total of 21 patches for the **B1** and **B2** blocks.
- The finished square should look as follows:



Step 2: Lateral Panels

Each block will need 2 lateral panels.

- Grab 2 strips of fabric **A** and 1 strip of fabric **F**
- Sew them cross grain wise in the order **AFA**.
- Proceed to cut 9" strips parallel to the selvage. Per each time you do this with the WOF, you will have 4 panels.
- Repeat until you have a total of 42 panels. Set aside.



LATERAL PANEL FOR **P1** & **P2** BLOCKS

- Repeat previous steps with 2 strips of fabric **A** and 1 strip of fabric **I**.
- Sew them cross grain wise in the order **AIA**.
- Repeat until you have a total of 42 panels. Set aside.



LATERAL PANEL FOR **B1** & **B2** BLOCKS

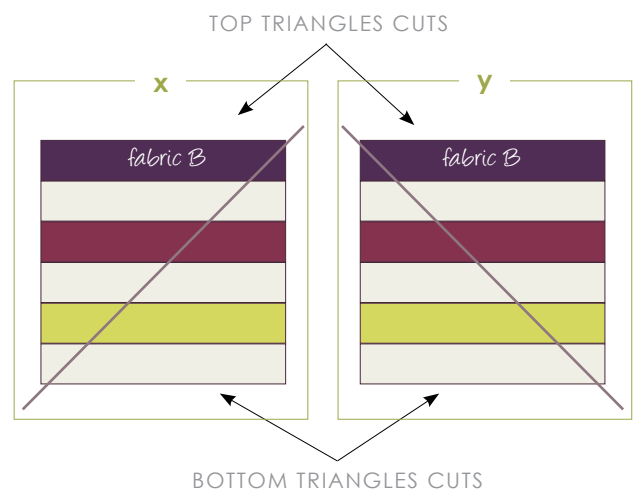


Step 3: Half -Square Triangle Unit

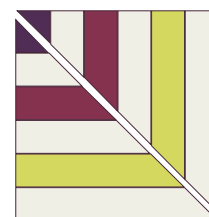
The third and most meticulous part is the assembly of the Half-Square Triangles Unit.

- Grab 3 strips of fabric **A** and 1 strip of each of the following fabrics: **B**, **G**, and **C**.
- Sew them cross grain wise in the order **BAGACA**. Proceed to cut 9 1/2" squares parallel to the selvage. Per each time you do this, you will have 4 squares.
- Repeat the previous step until you have 22 squares, or about 6 times.
- Now you will cut one-half of these squares diagonally upwards (**x**), and the other half diagonally downwards (**y**) always positioning fabric **B** on top.

Stack them up in this same order, so that the triangles don't get mixed up with each other.



- Grab one bottom triangle cut from way "**x**", and one bottom triangle cut from way "**y**" and position them together on the diagonal so that the same fabrics match making 90° angles.



BOTTOM TRIANGLES CUTS

- Sew along the diagonal with a 1/4" seam allowance making sure that all seams match. Repeat this step with the top triangle cuts. You can disregard 2 of the TOP triangle cuts as they will not be needed for this quilt.

- Repeat the previous step with all squares.
- You will end up with 11 new squares for **P1** block, and 10 new squares for **P2** block.



P1 BLOCK



P2 BLOCK

- Repeat Step 3 for blocks **B1** and **B2**, but this time grab 3 strips of fabric **A** and 1 strip of each of the following fabrics: **E**, **J**, and **H**.
- Sew them cross grain wise in the order **EAJAHA** with a $\frac{1}{4}$ seam allowance. Repeat steps as above only this time you can disregard 2 of the BOTTOM triangle cuts as they will not be needed for this quilt. In this case you will end up with 10 rectangles for **B1** and 11 rectangles for **B2**.



B1 BLOCK



B2 BLOCK

Step 4: Assemble Block

The last part for assembling a whole block is to sew the pieces from steps 1, 2 and 3 together.

- Grab 1 nine-patch square, 2 lateral panels, and 1 Half-square triangle unit; for the latter always make sure to leave the smallest square toward the outside, whether you see it with fabric **A** or fabric **B**.



P1 BLOCK



P2 BLOCK



B1 BLOCK



B2 BLOCK

- Repeat for blocks **B1** and **B2**. Always make sure to leave the smallest square toward the outside, whether you see it with fabric **A** or fabric **E**.



ASSEMBLING THE TOP

Sew all rights sides together with $\frac{1}{4}$ " seam allowance. Press open.

The blocks in this quilt rotate as the assembling progresses; please refer to the cover picture to determine the original position of each block.

- Sew the rows in the following order with the indicated angle rotations (or follow the cover photo):

1 st ROW:	P1	B2 -90°	P2	B1 -90°	P1	B2 -90°
2 nd ROW:	B2 90°	P1 180°	B1 90°	P2 180°	B2 90°	P1 180°
3 rd ROW:	P2	B1 -90°	P1	B2 -90°	P2	B1 -90°
4 th ROW:	B1 90°	P2 180°	B2 90°	P1 180°	B1 90°	P2 180°
5 th ROW:	P1	B2 -90°	P2	B1 -90°	P1	B2 -90°
6 th ROW:	B2 90°	P1 180°	B1 90°	P2 180°	B2 90°	P1 180°
7 th ROW:	P2	B1 -90°	P1	B2 -90°	P2	B1 -90°

- After each row is sewn, assembly the rows together maintaining the order from top to bottom or vice versa.



✿ BORDERS ASSEMBLY

Sew all rights sides together with 1/4" seam allowance. Press open.

For the inner border

- Sew two 79 1/2" x 1 1/2" fabric **G** strips along the top and bottom sides of the quilt top.
- Sew the other two 93 3/4" x 1 1/2" fabric **G** strips along the left & right sides of the quilt top.

For the outer border

- Sew two 81 1/2" x 2 1/2" fabric **J** strips along the top and bottom sides of the quilt top.
- Sew the other two 97 3/4" x 2 1/2" fabric **J** strips along the left & right sides of the quilt top.

✿ QUILT ASSEMBLY

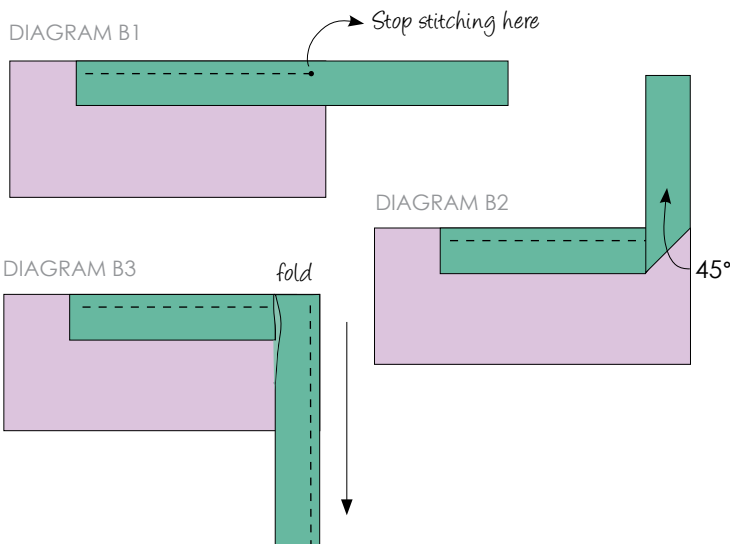
Sew right sides together.

- Place BACKING FABRIC on a large surface wrong side up. Stretch it with masking tape against that surface.
- Place BATTING on top of backing fabric.
- Place TOP on top of the batting with right side facing up. Smooth away wrinkles using your hands.
- Pin all layers together and baste with basting thread, using long stitches. You can also use safety pins to join the layers.
- Machine or hand quilt starting at the center and working towards the corners. Remember that quilting motives are a matter of personal preference. Have fun choosing yours!
- After you finished, trim excess of any fabric or batting, squaring the quilt to proceed to bind it.

✿ BINDING

Sew right sides together.

- Cut enough strips 1 1/2" wide by the width of the fabric **H** to make a final strip 375" long. Start sewing the binding strip in the middle of one of the sides of the quilt, placing the strip right side down and leaving an approximated 5" tail. Sew with 1/4" seam allowance (using straight stitch), aligning the strip's raw edge with the quilt top's raw edge.
- Stop stitching 1/4" before the edge of the quilt (DIAGRAM B 1). Clip the threads. Remove the quilt from under the machine presser foot. Fold the strip in a motion of 45° and upward, pressing with your fingers (DIAGRAM B2). Hold this fold with your finger, bring the strip down in line with the next edge, making a horizontal fold that aligns with the top edge of the quilt (DIAGRAM B3). Start sewing at 1/4" of the border, stitching all the layers. Do the same in the four corners of the quilt.
- Stop stitching before you reach the last 5 or 6 inches. Cut the threads and remove the quilt from under the machine presser foot. Lay the loose ends of the binding flat along the quilt edge, folding the ends back on themselves where they meet. Press them together to form a crease. Using this crease as the stitching line, sew the two open ends of the binding with right sides together (you can help yourself marking with a pencil if the crease is difficult to see).
- Trim seam to 1/4" and press open. Complete the sewing. Turn binding to back of the quilt, turn raw edge inside and stitch by hand using blind stitch.



CONGRATULATIONS!

