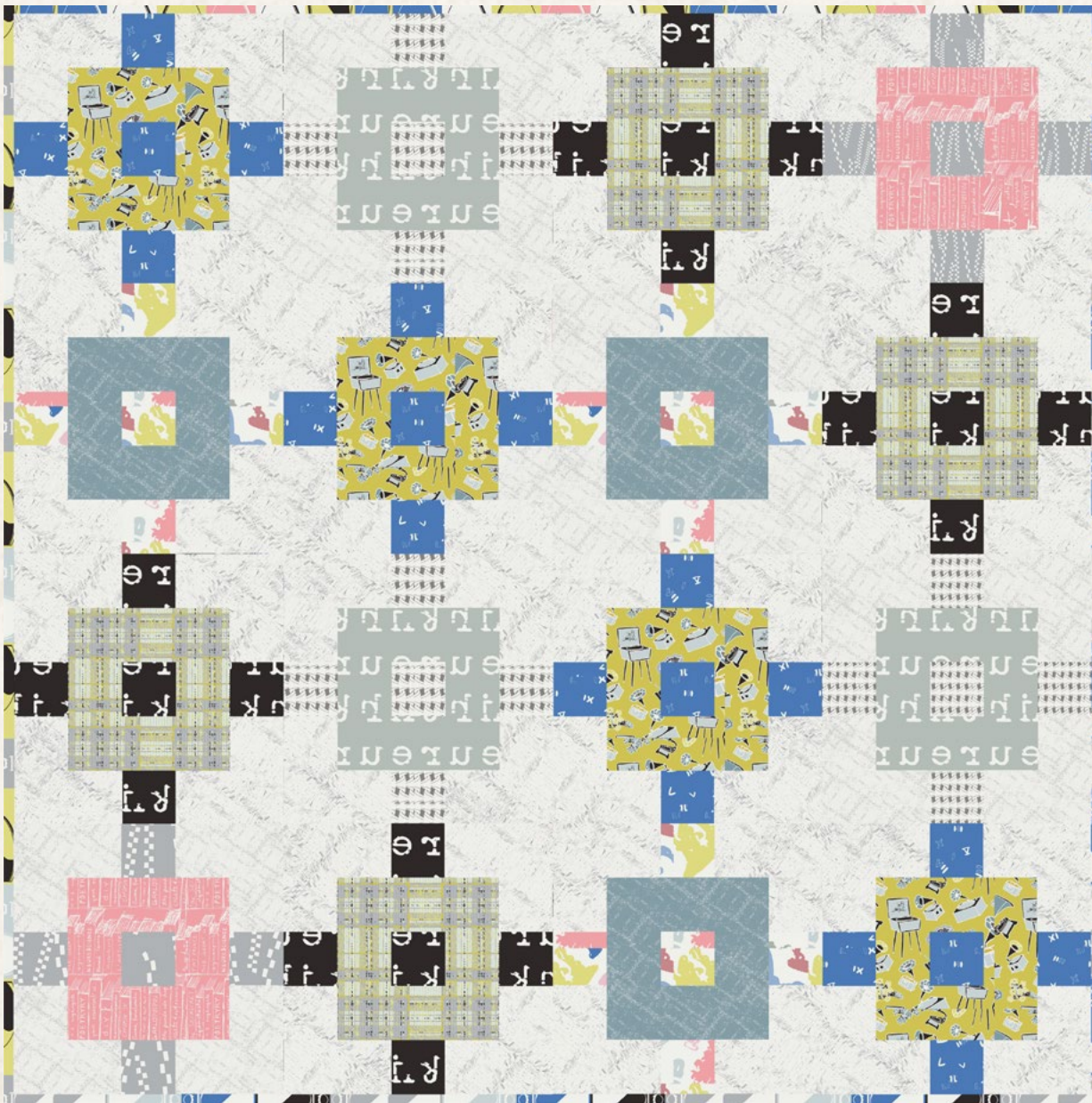


XXXXXX

X
X
X
X
X
X
X
X
X
X
X
X



× × × × × × × × × × × × × × × × × × × ×



LEXICON

QUILT DESIGNED BY AGF STUDIO

AGFstudio

FINISHED SIZE | 60" x 60"

PASTEL THRIFT

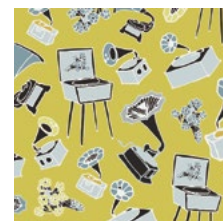
FABRICS DESIGNED BY AGF STUDIO



PST - 75504
FORESHADOWING SPELL



PST - 75509
ANALOG III CRUX



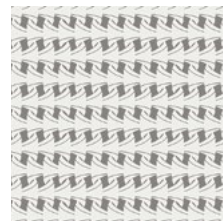
PST - 85505
GRAMOFLORE OPERA



PST - 75500
PORCELAINS PRISM



PST - 85504
FORESHADOWING ADAGE



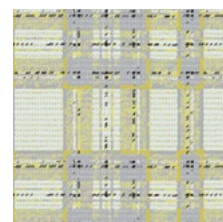
PST - 85503
ENCOUNTERED PAVILLONS



PST - 75507
REMINDER ALLOY



PST - 85507
REMINDER HIDDEN



PST - 85501
TYPED-PLAID ABSTRUSITY



PST - 85508
SHREDDED CHESS LITHO



PST - 75506
BIBLIOMANIA ANTIDOTE



PST - 75502
MAGIC POTION SCENT



PST - 85506
BIBLIOMANIA CANDELIGHT



FEEL THE DIFFERENCE © 2016 Courtesy of Art Gallery Quilts LLC. All Rights Reserved.

FABRIC REQUIREMENTS

Fabric A	PST-75504	1 7/8 yd.
Fabric B	PST-75509	1/4 yd.
Fabric C	PST-85505	1/3 yd.
Fabric D	PST-75500	1/4 yd.
Fabric E	PST-85504	1/4 yd.
Fabric F	PST-85503	1/4 yd.
Fabric G	PST-75507	1/4 yd.
Fabric H	PST-85507	1/4 yd.
Fabric I	PST-85501	1/3 yd.
Fabric J	PST-85508	1/8 yd.
Fabric K	PST-75506	1/8 yd.

BACKING FABRIC

PST-85506 4 yds. *(Suggested)*

BINDING FABRIC

PST-75502 1/2 yd.

CUTTING DIRECTIONS

1/4" seam allowances are included.

Sixty Four (64) - 3 1/2" squares from Fabric **A**
Sixty Four (64) - 3 1/2" X 6 1/2" strips from Fabric **A**

Twenty (20) - 3 1/2" squares from Fabric **B** and **H**
Eight (8) - 3 1/2" squares from Fabric **C** and **I**
Eight (8) - 3 1/2" x 9 1/2" strips from Fabric **C** and **I**


Fifteen (15) - 3 1/2" squares from Fabric **D** and **F**
Six (6) - 3 1/2" squares from Fabric **E** and **G**
Six (6) - 3 1/2" x 9 1/2" strip from Fabric **E** and **G**

Ten (10)- 3 1/2" squares from Fabric **J**
Four (4)- 3 1/2" squares from Fabric **K**
Four (4)- 3 1/2" x 9 1/2" strips from Fabric **K**

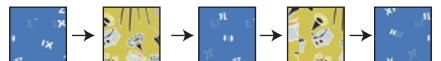
CONSTRUCTION

Sew all rights sides together with 1/4" seam allowance.

- To create the block for this quilt sew the following rows:
- Row 1: Sew 3 1/2" x 6 1/2" strip from Fabric A to a 3 1/2" square from Fabric B to another 3 1/2" x 6 1/2" strip from Fabric A
- Row 2: Sew a 3 1/2" square from Fabric A to a 3 1/2" x 9 1/2" strip from Fabric C to another 3 1/2" square from Fabric A
- Row 3: Sew 3 1/2" squares in the following order Fabric B,C,B,C, and B
- Row 4: Sew a 3 1/2" square from Fabric A to a 3 1/2" x 9 1/2" strip from Fabric C to another 3 1/2" square from Fabric A
- Row 5: Sew 3 1/2" x 6 1/2" strip from Fabric A to a 3 1/2" square from Fabric B to another 3 1/2" x 6 1/2" strip from Fabric A

Row 1 

Row 2 

Row 3 

Row 4 

Row 5 

DIAGRAM 1

- Sew row 1- 5 together. You will need a total of 16 blocks.

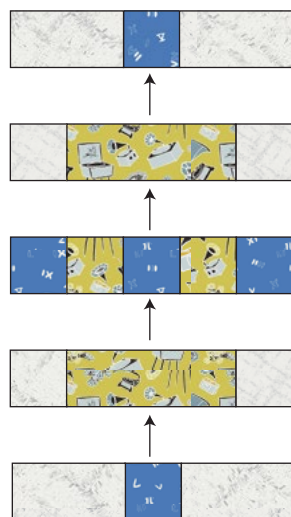


DIAGRAM 2

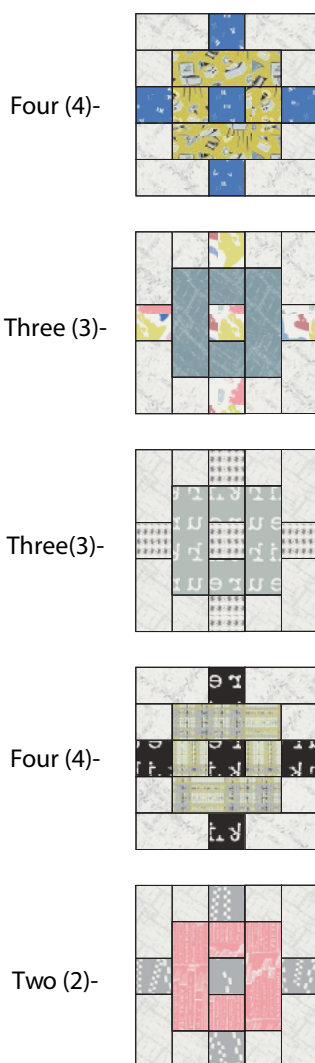


DIAGRAM 3

ASSEMBLING THE TOP

Sew all rights sides together with $\frac{1}{4}$ " seam allowance. Press open.

- Following Quilt illustration sew blocks into row and then sew rows together.

QUILT ASSEMBLY

Sew rights sides together.

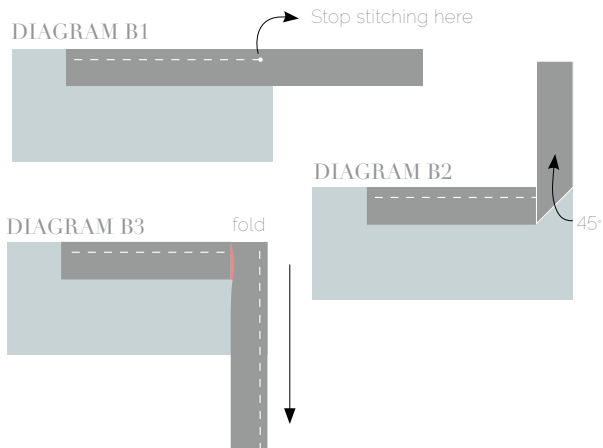
- Place BACKING FABRIC on a large surface wrong side up. Stretch it with masking tape against that surface.
- Place BATTING on top of backing fabric.
- Place TOP on top of the batting with right side facing up. Smooth away wrinkles using your hands.
- Pin all layers together and baste with basting thread, using long stitches. You can also use safety pins to join the layers.
- Machine or hand quilt starting at the center and working towards the corners. Remember that quilting motifs are a matter of personal preference. Have fun choosing yours!
- After you finished, trim excess of any fabric or batting, squaring the quilt to proceed to bind it.

BINDING

Sew rights sides together.

- Cut enough strips $1\frac{1}{2}$ ' wide by the width of the fabric PST-75502 to make a final strip 250' long. Start sewing the binding strip in the middle of one of the sides of the quilt, placing the strip right side down and leaving an approximated 5' tail. Sew with $\frac{1}{4}$ ' seam allowance (using straight stitch), aligning the strip's raw edge with the quilt top's raw edge.
- Stop stitching $\frac{1}{4}$ ' before the edge of the quilt (**DIAGRAM B 1**). Clip the threads. Remove the quilt from under the machine presser foot. Fold the strip in a motion of 45° and upward, pressing with your fingers (**DIAGRAM B2**). Hold this fold with your finger, bring the strip down in line with the next edge, making a horizontal fold that aligns with the top edge of the quilt (**DIAGRAM B3**). Start sewing at $\frac{1}{4}$ ' of the border, stitching all the layers. Do the same in the four corners of the quilt.

- Stop stitching before you reach the last 5 or 6 inches. Cut the threads and remove the quilt from under the machine presser foot. Lay the loose ends of the binding flat along the quilt edge, folding the ends back on themselves where they meet. Press them together to form a crease. Using this crease as the stitching line, sew the two open ends of the binding with right sides together (you can help yourself marking with a pencil if the crease is difficult to see).
- Trim seam to $\frac{1}{4}$ " and press open. Complete the sewing. Turn binding to back of the quilt, turn raw edge inside and stitch by hand using blind stitch.



Congratulations
& enjoy



artgalleryfabrics.com

NOTE: While all possible care has been taken to ensure the accuracy of this pattern, We are not responsible for printing errors or the way in which individual work varies.

Please read instructions carefully before starting the construction of this quilt. If desired, wash and iron your fabrics before starting to cut.

© 2016 Courtesy of Art Gallery Quilts LLC. All Rights Reserved.