

HOME sweet HOME



HOME sweet HOME

SEW Caroline

QUILT DESIGNED BY CAROLINE

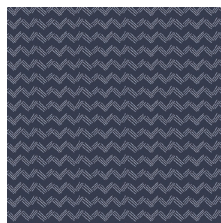


FABRICS DESIGNED BY CAROLINE

WELCOME FUN



HAH-14400
TABLE FLOWERS RAINBOW



HAH-14401
GRASS IN MOONLIGHT



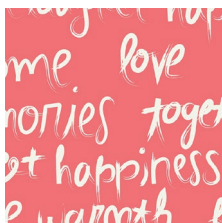
HAH-14402
FORGET ME NOT CALM



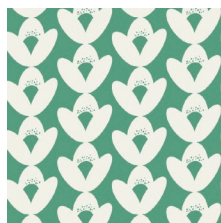
HAH-14403
WINDOW VIEW SPRING



HAH-14404
ENTRYWAYS CANDIED



HAH-14405
TO LIVE BY LOVE



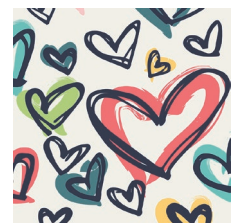
HAH-14406
LOTUS BEATS ECHO



HAH-14407
BLOCK FESTIVAL

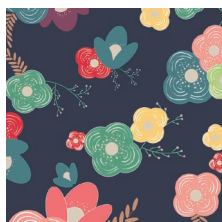


HAH-14408
BEDSIDE JOURNAL SUNNY

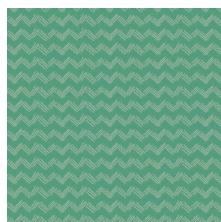


HAH-14409
WHERE THE HEART IS PURE

WELCOME LOVE



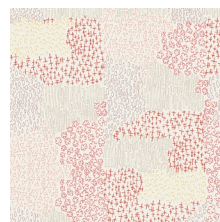
HAH-24400
TABLE FLOWERS CHEER



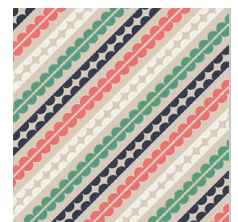
HAH-24401
GRASS IN SUNLIGHT



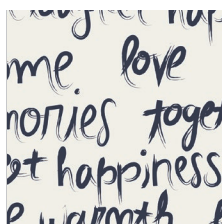
HAH-24402
FORGET ME NOT ROMANCE



HAH-24403
WINDOW VIEW DESERT



HAH-24404
ENTRYWAYS JOYEUX



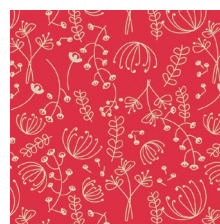
HAH-24405
TO LIVE BY PEACE



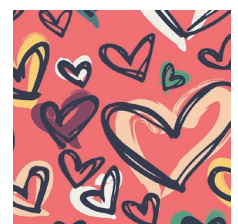
HAH-24406
LOTUS BEATS PASSION



HAH-24407
BLOCK PARTY



HAH-24408
BEDSIDE JOURNAL CANDID



HAH-24409
WHERE THE HEART IS RED



HOME sweet HOME

FINISHED SIZE | 46 ¼" x 55 ½"

FABRIC REQUIREMENTS

Fabric A	HAH-24407	¾ yd.
Fabric B	HAH-24406	¾ yd.
Fabric C	HAH-14400	¾ yd.
Fabric D	HAH-24403	¾ yd.
Fabric E	HAH-14402	¾ yd.
Fabric F	HAH-14408	¾ yd.
Fabric G	PE-408	1 ½ yd.
Fabric H	HAH-14404	½ yd.

BACKING FABRIC

HAH-14409 3 ½ yds. *(Suggested)*

BINDING FABRIC

HAH-14404 (Fabric **H**) *(included)*

CUTTING DIRECTIONS

¼" seam allowances are included.
WOF means width of fabric.

Ten (10) 5 ½" squares from fabrics **A-F**

Sixty (60) 5 ½" squares from fabric **G**

CONSTRUCTION

Sew all rights sides together with ¼" seam allowance.

- Using a water-soluble marker or a pencil, mark a diagonal line across the wrong side of all the 5 ½" squares from fabrics **A-F**.

XXXXXXXXXXXXXXXXXXXXXXXXXXXXXXXXXXXX

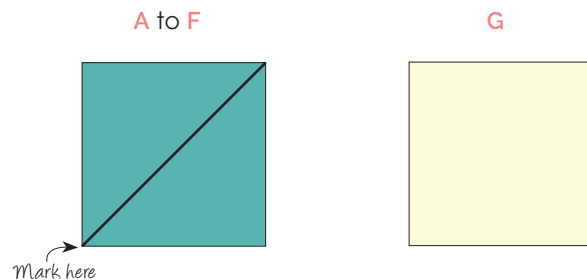


DIAGRAM 1

- Place one of the marked squares right sides together with an unmarked square from fabric **G**
- Sew ¼" on both sides of the marked line.
- Cut piece in half along the drawn line. Press seams open..
- Pair up the rest of the marked squares (**A-F**) with the unmarked squares (**G**) repeat to make a total of 120 half square triangles.

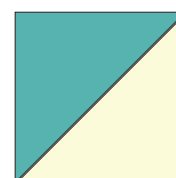
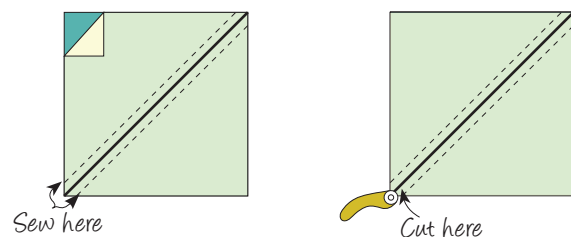


DIAGRAM 2

ASSEMBLING THE TOP

Sew all rights sides together with ¼" seam allowance. Press open.

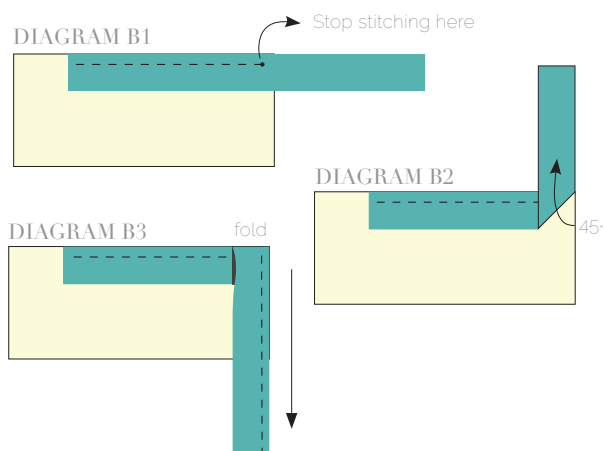
- Refer to cover photo for squares placements
- Make Twelve rows of ten squares each by joining the corresponding squares together.
- Then, sew the rows together from top to bottom.

QUILT ASSEMBLY

Sew rights sides together.

- Place BACKING FABRIC on a large surface wrong side up. Stretch it with masking tape against that surface.
- Place BATTING on top of backing fabric.
- Place TOP on top of the batting with right side facing up. Smooth away wrinkles using your hands.
- Pin all layers together and baste with basting thread, using long stitches. You can also use safety pins to join the layers.
- Machine or hand quilt starting at the center and working towards the corners. Remember that quilting motifs are a matter of personal preference. Have fun choosing yours!
- After you finished, trim excess of any fabric or batting, squaring the quilt to proceed to bind it.

- Stop stitching before you reach the last 5 or 6 inches. Cut the threads and remove the quilt from under the machine presser foot. Lay the loose ends of the binding flat along the quilt edge, folding the ends back on themselves where they meet. Press them together to form a crease. Using this crease as the stitching line, sew the two open ends of the binding with right sides together (you can help yourself marking with a pencil if the crease is difficult to see).
- Trim seam to $\frac{1}{4}$ " and press open. Complete the sewing. Turn binding to back of the quilt, turn raw edge inside and stitch by hand using blind stitch.



BINDING

Sew rights sides together.

- Cut enough strips $1\frac{1}{2}$ ' wide by the width of the fabric **H** to make a final strip 213' long. Start sewing the binding strip in the middle of one of the sides of the quilt, placing the strip right side down and leaving an approximated 5' tail. Sew with $\frac{1}{4}$ " seam allowance (using straight stitch), aligning the strip's raw edge with the quilt top's raw edge.
- Stop stitching $\frac{1}{4}$ " before the edge of the quilt (**DIAGRAM B 1**). Clip the threads. Remove the quilt from under the machine presser foot. Fold the strip in a motion of 45° and upward, pressing with your fingers (**DIAGRAM B2**). Hold this fold with your finger, bring the strip down in line with the next edge, making a horizontal fold that aligns with the top edge of the quilt (**DIAGRAM B3**). Start sewing at $\frac{1}{4}$ " of the border, stitching all the layers. Do the same in the four corners of the quilt.



artgalleryfabrics.com

NOTE: While all possible care has been taken to ensure the accuracy of this pattern, We are not responsible for printing errors or the way in which individual work varies. Please read instructions carefully before starting the construction of this quilt. If desired, wash and iron your fabrics before starting to cut.

© 2015 Courtesy of Art Gallery Quilts LLC. All Rights Reserved.