

halfmoon boats

{ FEATURING EMMY GRACE COLLECTION }



Art Gallery
FABRICS

FREE PROJECT SHEET

DESIGNED BY bari j.

QUILT DESIGNED BY **bari j.**

halfmoon boats

FINISHED SIZE: 61" x 71"



KIT QUANTITY

EMG-4601	3/4 yd.
EMG-4603	2/3 yd.
EMG-4609	1 yd.
EMG-4600	1 yd.
EMG-4604	1 1/3 yd.
EMG-4606	3/4 yd.
EMG-4607	1 1/3 yd.
EMG-4605	1/2 yd.
EMG-4608	1/2 yd.
EMG-4602	fat quarter
PE-430	2 1/2 yd.
Backing	4 1/2 yd.



emmy grace by bari j.

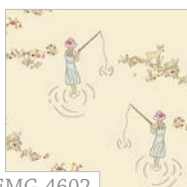
SPRING'S WHISPER



EMG-4600
Floral Floats Fresh



EMG-4601
Knotty Rain



EMG-4602
Fawn Day Fantasy



EMG-4603
Ripples Pond



EMG-4604
Little Town Blues



EMG-4605
Gillie Wishes Cool



EMG-4606
Ripples River



EMG-4607
Budquette Dayspring



EMG-4608
Stitched Road Beryl

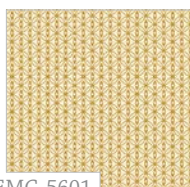


EMG-4609
Painted Ladies' Flutter

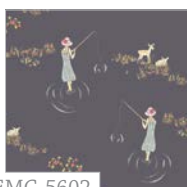
AUTUMN'S SIGH



EMG-5600
Floral Floats Field



EMG-5601
Knotty Sunbeam



EMG-5602
Fawn Day Murk



EMG-5603
Ripples Rose



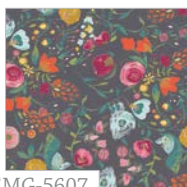
EMG-5604
Little Town Glee



EMG-5605
Gillie Wishes Sweet



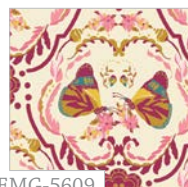
EMG-5606
Ripples Sea



EMG-5607
Budquette Nightfall



EMG-5608
Stitched Road Granite

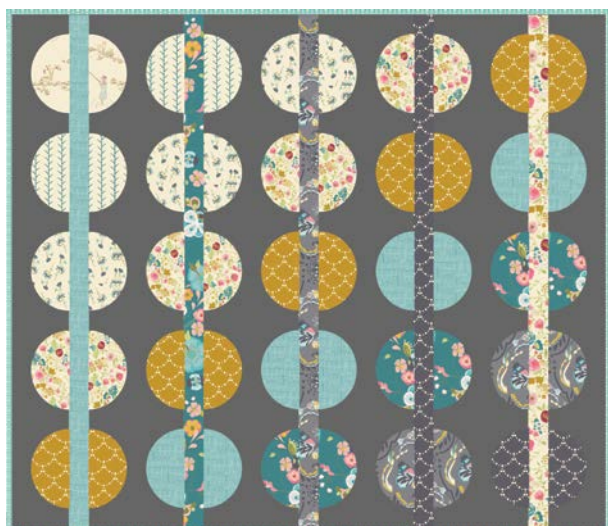


EMG-5609
Painted Ladies' Kiss



halfmoon boats

FINISHED SIZE: 61" x 71"



FABRIC REQUIREMENTS

Fabric A	EMG-4601	3/4 yd.
Fabric B	EMG-4603	2/3 yd.
Fabric C	EMG-4609	1 yd.
Fabric D	EMG-4600	1 yd.
Fabric E	EMG-4604	1 1/3 yd.
Fabric F	EMG-4606	3/4 yd.
Fabric G	EMG-4607	1 1/3 yd.
Fabric H	EMG-4605	1/2 yd.
Fabric I	EMG-4608	1/2 yd.
Fabric J	EMG-4602	FQ.
Fabric K	PE-430	2 1/2 yd.

Backing Fabric
4 1/2 yds. (suggested)

Binding Fabric
EMG-4601 (Fabric A) (included)

FABRIC REQUIREMENTS

Fabric A	EMG-5601	3/4 yd.
Fabric B	EMG-5602	2/3 yd.
Fabric C	EMG-5607	1 yd.
Fabric D	EMG-5608	1/2 yd.
Fabric E	EMG-5606	2/3 yd.
Fabric F	EMG-5600	3/4 yd.
Fabric G	EMG-5603	1 1/3 yd.
Fabric H	EMG-5609	1 yd.
Fabric I	EMG-5605	1 yd.
Fabric J	EMG-5604	FQ.
Fabric K	PE-430	2 1/2 yd.

Backing Fabric
4 1/2 yds. (suggested)

Binding Fabric
EMG-5601 (Fabric A) (included)



QUILT DESIGNED BY BARI J.

Instructions for Piec-lique written by Cristy Fincher
Instructions for piecing blocks written by Melanie Thornton

CUTTING DIRECTIONS

1/4" seam allowances are included.

- One (1) 12" square from fabric **B**
- Two (2) 12" square from fabric **C**
- Three (3) 12" square from fabric **D**
- Four (4) 12" square from fabric **E**
- Five (5) 12" square from fabric **F**
- Four (4) 12" square from fabric **G**
- Three (3) 12" square from fabric **H**
- Two (2) 12" square from fabric **I**
- One (1) 12" square from fabric **K**
- One (1) 3 1/2" x 60 1/2" strip from fabric **B**
- One (1) 3 1/2" x 60 1/2" strip from fabric **C**
- One (1) 3 1/2" x 60 1/2" strip from fabric **D**
- One (1) 3 1/2" x 60 1/2" strip from fabric **E**
- One (1) 3 1/2" x 60 1/2" strip from fabric **G**
- Twenty Five (25) 14" square from fabric **K**

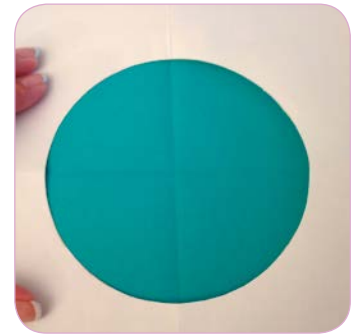
Piec-lique Circles Construction

Step 1: Creating Your Freezer Paper Template Shape

- Cut four pieces of freezer paper into 8 1/2" x 11" pieces. Press two pieces together shiny side to dull side. Repeat so that you have two finished pieces. Print the attached template circle onto the freezer paper, making sure it prints on the dull side of the paper.
- Press the template pieces together.

Step 2: Preparing Your Freezer Paper Template

- Once you have the circle traced and ready, lay both of your pieces of freezer paper on your pressing board, SHINY SIDES DOWN. Making your template with two pieces makes it much stronger, durable, and reusable. Doubling the layers will let you use the template 5-8 times, easily. As you're pressing, apply a good amount of pressure to make sure the layers stick, and any bubbles or ripples are flat.
- After the two layers are pressed together, cut the center of the circle out, leaving the outside frame intact. Be sure to cut with smooth movements. Any bumps or gouges will show up on your fabric, later.



Step 3: It's Fabric Time!

- Cut a square piece of fabric that is a few inches larger than your circle. Lightly starch and press your background fabric. Finger press center creases into both your background fabric and your circle template.
- Draw a little line, or mark, on the creases of the circle template. This will help us center the circle, just right. If you want to play around, and off set the circle, go right ahead! Line up your marks on the background fabric and template. Hold it in place, and press it, shiny side down, with your iron, to the back of your background fabric.

- Press the template well, so it completely sticks to your background fabric. You should have no bubbles or bumps.

Step 4: Cutting Out Your Circle

- Next, you'll cut the center of your circle out. This can be a rough-cut. Give yourself at least a 3/8" seam allowance. That extra width in the seam allowance will help give you more control when you sew. Once we sew it up, you'll be trimming it off, to make it 1/4" allowance. Discard the center that you cut away, or add it into your scrap bin.
- Next, clip the inside curve of the circle. We are going to be pressing this up and over the edge of the freezer paper template, and the clipping will allow it to open up, creating a nice smooth circle. When you clip, stop about 2-3 threads/fibers before the freezer paper template.



Gauge your clipping, so the allowance will turn to make a smooth circle. Too far apart will keep your circle from looking smooth. Too close is hard to manage, when your pressing.

Step 5: Starching the Seam Allowance

- Spray some starch into a small cup, or bowl. When the foam settles, the liquid will be left.
- With your stencil brush, paint some starch along the inside edge of the seam allowance. It should be damp, not heavily wet. Paint it around the entire circle. You also paint on the starch a bit, then iron, then paint on more. Either way is fine.

Step 6: Pressing the Seam Allowance

- Be sure your iron is hot and dry. Pull back the little "tabs" of the seam allowance, over the top of the freezer paper. You'll feel when you "hit" the template. Don't pull on the tabs too much, to prevent the freezer paper from folding over, as well.
- Press the tabs down, with your iron. Move around the circle, pulling over the tabs, and pressing them down. Slowly and smoothly. Figure 1
- When it's all pressed it will look a lot like the cog of a wheel. You should have a smoothly pressed circle, all the way around.



Figure 1



Figure 2

Step 7: Adding the Circle Fabric

- Cut the fabric for the center of your circle. The square doesn't need to be precise or cut perfectly. It just needs to be bigger than the center circle.
- Remove the freezer paper. If you press it lightly with your iron, the wax of the shiny side will warm up, and release more easily. Draw a fine line of glue around the circle, on the inside edge. Figure 2
- Place your circle fabric, right side down, and be sure it covers the seam allowance on all sides. Heat-set it in place with your iron.



Figure 3

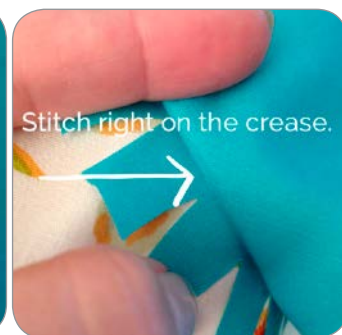


Figure 4

Step 8: Sewing it all Together

- Turn your circle back over to the back, and open up the crease you made when you starched and turned your background. You will see the crease you made by pressing the allowance over.
- Know it's time to sew! Be sure that the tabs of the allowance, and the right side of the raw edge of the circle fabric are to the right of the foot. You will be sewing through two layers, just like when you piece normally. Line your needle up with the crease, and begin with your needle down.
- Slowly stitch directly on the crease, going around the entire circle. I guide with both hands, using my left to keep the bulk of the background out of the way of the needle. If you catch the background under the needle, you'll get tucks and puckers. I used a 1.8/2 stitch length, here. When you get back to where you started, backstitch a few stitches. Once it's sewn, trim the allowance down to 1/4" (Figure 3).



Step 9: Truing Up Your Block

- To true up our block, we'll be working from the center out. This will give you a much more accurate measurement. First, mark the centers of all four sides. It's a good idea to mark at the edge, and a small mark closer to the circle. Our original mark will be removed, as we cut away the edges. The additional mark, will help us we true it up (Figure 4).

Piec-lique Circles Construction

- Choose a measurement mark on your cutting mat to center your block on. I chose the 5" mark, but you could choose the 10, or anything you prefer. Lay your marked block on your mat, and line up your verticle marks with the measurement you chose. Cut the right side first. Line up your ruler, from the center line, to half of the measurement of the unfinished block (This block is 12 1/2" unfinished thus the middle is 6 1/4"). Once you have each block trued up, cut each block in half vertically.

- Next, line up your ruler on the left side of your circle block, going out, from the center, the same measurement you cut before. Turn your block around, line up the bottom of your block to a horizontal measurement line, to keep it square. Repeat the measuring and cutting process for the last two sides.

ASSEMBLING THE TOP

Sew all rights sides together with 1/4" seam allowance. Press open.

- Sew all the pieces together. Arrange according to final layout diagram and sew blocks together into columns. Sew the appropriate 3 1/2 inch strip in between each circle column set. Lastly, sew all of your column sets together to finish the quilt top

QUILT ASSEMBLY

Sew right sides together.

- Place BACKING FABRIC on a large surface wrong side up. Stretch it with masking tape against that surface.
- Place BATTING on top of backing fabric.
- Place TOP on top of the batting with right side facing up. Smooth away wrinkles using your hands.
- Pin all layers together and baste with basting thread, using long stitches. You can also use safety pins to join the layers.
- Machine or hand quilt starting at the center and working towards the corners. Remember that quilting motives are a matter of personal preference. Have fun choosing yours!
- After you finished, trim excess of any fabric or batting, squaring the quilt to proceed to bind it. Sew right sides together.

BINDING

- **Cut enough** strips 1 1/2" wide by the width of the fabric **A** to make a final strip 290" long. Start sewing the binding strip in the middle of one of the sides of the quilt, placing the strip right side down and leaving an approximated 5" tail. Sew with 1/4" seam allowance (using straight stitch), aligning the strip's raw edge with the quilt top's raw edge.

- Stop stitching 1/4" before the edge of the quilt (DIAGRAM B 1). Clip the threads. Remove the quilt from under the machine presser foot. Fold the strip in a motion of 45° and upward, pressing with your fingers (DIAGRAM B2).

Hold this fold with your finger, bring the strip down in line with the next edge, making a horizontal fold that aligns with the top edge of the quilt (DIAGRAM B3).

Start sewing at 1/4" of the border, stitching all the layers. Do the same in the four corners of the quilt.

- Stop stitching before you reach the last 5 or 6 inches. Cut the threads and remove the quilt from under the machine presser foot. Lay the loose ends of the binding flat along the quilt edge, folding the ends back on themselves where they meet. Press them together to form a crease. Using this crease as the stitching line, sew the two open ends of the binding with right sides together (you can help yourself marking with a pencil if the crease is difficult to see).

- Trim seam to 1/4" and press open. Complete the sewing. Turn binding to back of the quilt, turn raw edge inside and stitch by hand using blind stitch.

DIAGRAM B1

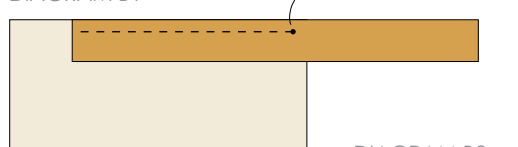
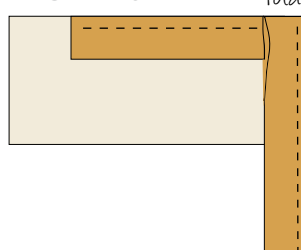


DIAGRAM B2



DIAGRAM B3



CONGRATULATIONS!



Feel the difference
For more free patterns visit:

artgalleryfabrics.com

NOTE: While all possible care has been taken to ensure the accuracy of this pattern, we are not responsible for printing errors or the way in which individual work varies. Please read instructions carefully before starting the construction of this quilt. If desired, wash and iron your fabrics before starting to cut.
© 2014 Courtesy of Art Gallery Quilts LLC.
All Rights Reserved.

halfmoonboats

Circle Template

Cut two and tape together

10 1/2" x 10 1/2"