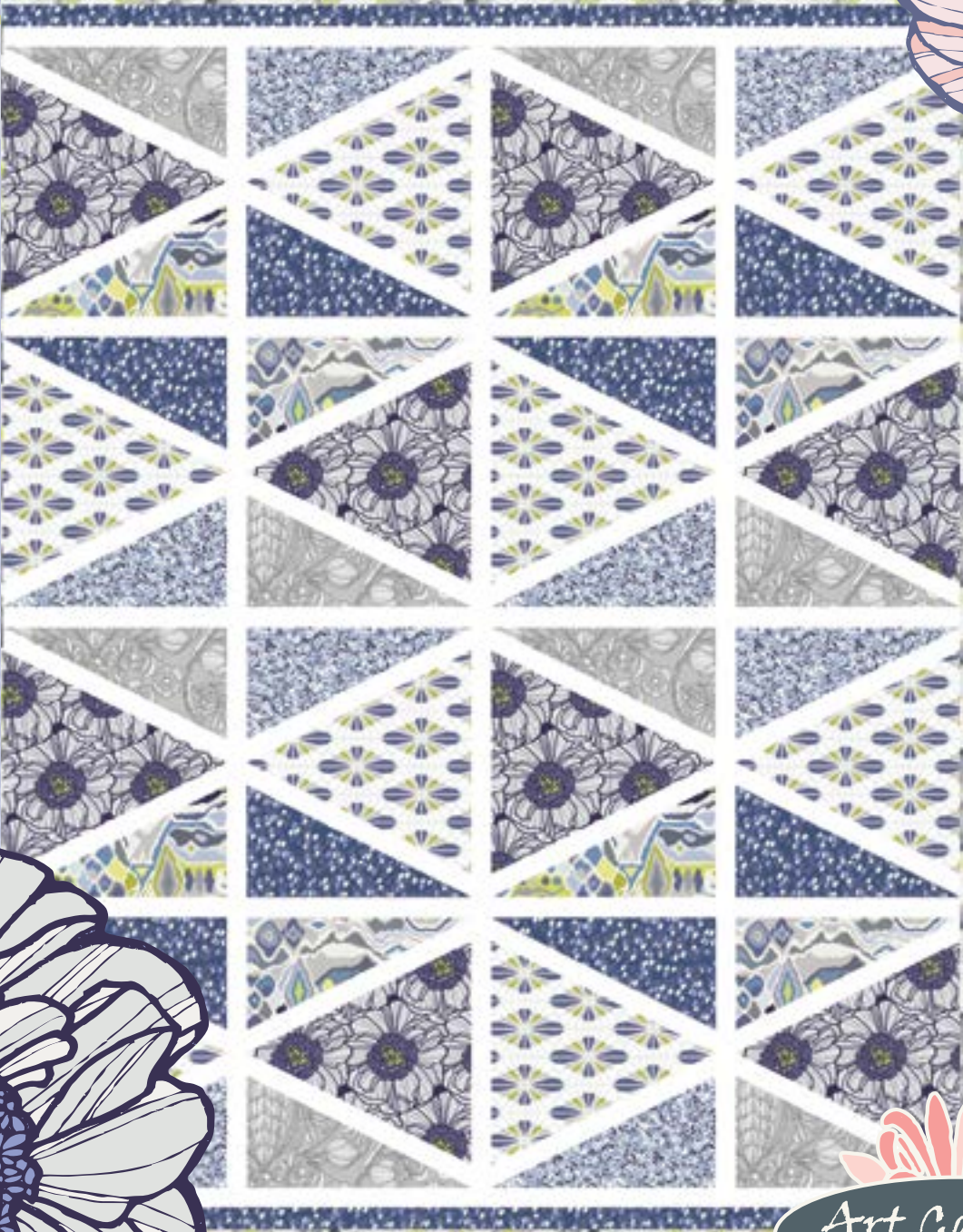


GRAPHite

{ FEATURING LUXE IN BLOOM COLLECTION }



FREE PROJECT SHEET

DESIGNED BY SARAH WATSON

GRAPHite

FINISHED SIZE: 47" x 59"
BLOCK SIZE: 11½" x 12¾"

To download the instructions for this pattern visit

artgalleryfabrics.com

ADDITIONAL BLENDER USED
PE-433 Snow



COLOR OPTION

LUXE in bloom by SARAH WATSON

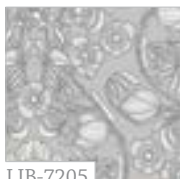
GREYSTONE



LIB-7207
Jeweled Peony Astral



LIB-7201
Boucherouite Silver



LIB-7205
Extravagarden Hush



LIB-7209
Diamante Shine



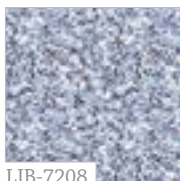
LIB-7202
Dandelions in Dawn



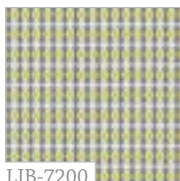
LIB-7203
Cascade Agate



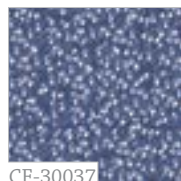
LIB-7204
Flumes Citron



LIB-7208
Petite Petalie Lapis



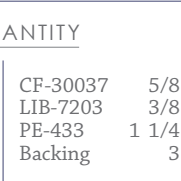
LIB-7200
Marquise Azure



CF-30037
Innocent Charm Acai



LIB-7202
Dandelions in Dawn



LIB-7203
Cascade Agate

KIT QUANTITY

LIB-7207	3/4 yd.	CF-30037	5/8 yd.
LIB-7209	3/4 yd.	LIB-7203	3/8 yd.
LIB-7205	3/8 yd.	PE-433	1 1/4 yd.
LIB-7201	3/8 yd.	Backing	3 yd.
LIB-7208	3/8 yd.		

QUARTZ



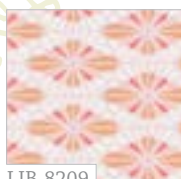
LIB-8207
Jeweled Peony Boreal



LIB-8201
Boucherouite Blush



LIB-8205
Extravagarden Bold



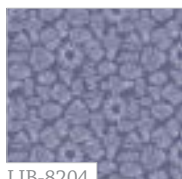
LIB-8209
Diamante Blossom



LIB-8202
Dandelions in Dusk



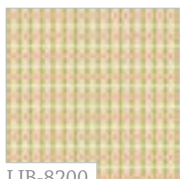
LIB-8203
Cascade Coral



LIB-8204
Flumes Indigo



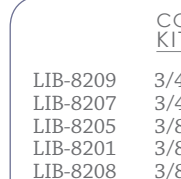
LIB-8208
Petite Petalie Pearl



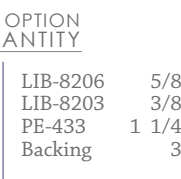
LIB-8200
Marquise Rose



LIB-8206
Crystalline Reef



LIB-8202
Dandelions in Dusk



LIB-8203
Cascade Coral

COLOR OPTION KIT QUANTITY

LIB-8209	3/4 yd.	LIB-8206	5/8 yd.
LIB-8207	3/4 yd.	LIB-8203	3/8 yd.
LIB-8205	3/8 yd.	PE-433	1 1/4 yd.
LIB-8201	3/8 yd.	Backing	3 yd.
LIB-8208	3/8 yd.		

DESIGNED BY SARAH WATSON

FABRICS DESIGNED BY SARAH WATSON
QUILT CONSTRUCTED BY PRISCILLA RAMIREZ FOR
ART GALLERY FABRICS



GRAPHite

FINISHED SIZE: 47" x 59"
BLOCK SIZE: 11" 1/2 x 12 3/4"

To download the instructions for
this pattern visit

artgalleryfabrics.com

FABRIC REQUIREMENTS

Fabric A	LIB-7207	3/4 yd.
Fabric B	LIB-7209	3/4 yd.
Fabric C	LIB-7205	3/8 yd.
Fabric D	LIB-7201	3/8 yd.
Fabric E	LIB-7208	3/8 yd.
Fabric F	CF-30037	5/8 yd.
Fabric G	LIB-7203	3/8 yd.
Fabric H	PE-433	1 1/4 yd.

Backing Fabric

LIB-7205 5 1/2 yd. (suggested)

Binding Fabric

LIB-7203 (Fabric G) (included)

TEMPLATE FOR THIS QUILT IS
PROVIDED BELOW

for the color option of this quilt do a
direct fabric replacement except where
specified

CUTTING DIRECTIONS

1/4" seam allowances are included.

FOR ALL BLOCKS CUT

Eight (8) triangles with template from fabric **A**

Eight (8) triangles with template from fabric **B**

Two (4) 6" x 12 1/4" rectangles from fabric **C**.

Cut two (2) of the rectangles diagonally left to right
up.

Cut the other two (2) of the rectangles diagonally
right to left down.

you will get a total of eight triangles

Two (4) 6" x 12 1/4" rectangles from fabric **D**

Cut two (2) of the rectangles diagonally left to right
up.

Cut the other two (2) of the rectangles diagonally
right to left down.

you will get a total of eight triangles

Two (4) 6" x 12 1/4" rectangles from fabric **E**

Cut two (2) of the rectangles diagonally left to right
up.

Cut the other two (2) of the rectangles diagonally
right to left down.

you will get a total of eight triangles

Two (4) 6" x 12 1/4" rectangles from fabric **F**

Cut two (2) of the rectangles diagonally left to right
up.

Cut the other two (2) of the rectangles diagonally
right to left down.

you will get a total of eight triangles

Thirty-two (32) 1 1/2" x 14" strips from fabric **H**

FOR SASHING CUT

Vertical Sashing

Twelve (12) 1 1/2" x 12 3/4" strips from fabric **H**

Horizontal Sashing

Twenty (20) 1 1/2" x 11 1/2" strips from fabric **H**

Fifteen (15) 1 1/2" x 1 1/2" squares from fabric **H**

FOR BORDERS CUT

Top & Bottom Borders

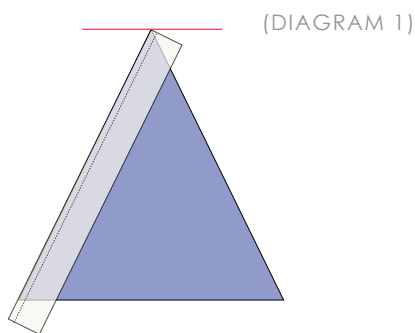
Two (2) 1 1/2" x 47 1/2" strips from fabric **F***

* In order to get these long strips you need
to join two or more Width Of Fabric strips to-
gether.

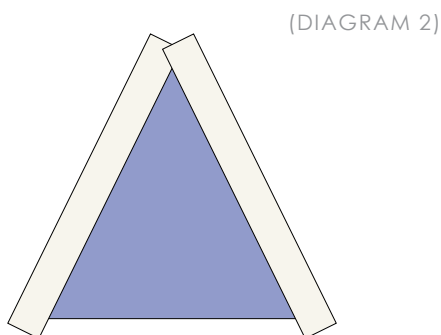
BLOCK CONSTRUCTION

Sew all rights sides together with 1/4" seam allowance. Press open.

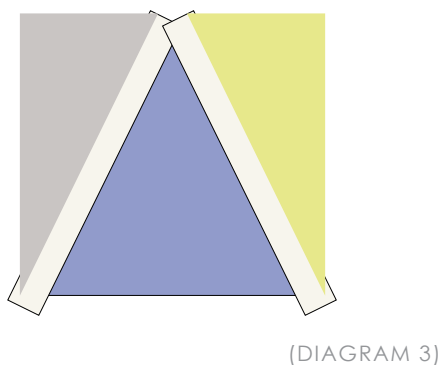
- There are two different block combinations in this quilt, but they are both constructed in the same manner.
- Begin by grabbing one triangle from fabric **A**, two diagonal strips from fabric **H**, one triangle from fabric **C** and one triangle from fabric **D**.
- Attach one diagonal strip (fabric **H**) to one diagonal side of the center triangle (fabric **A**). When you attach it make sure that you align the pieces at the top (DIAGRAM 1)



- Press seams open and proceed to attach the other diagonal strip. Press seams open. (DIAGRAM 2)



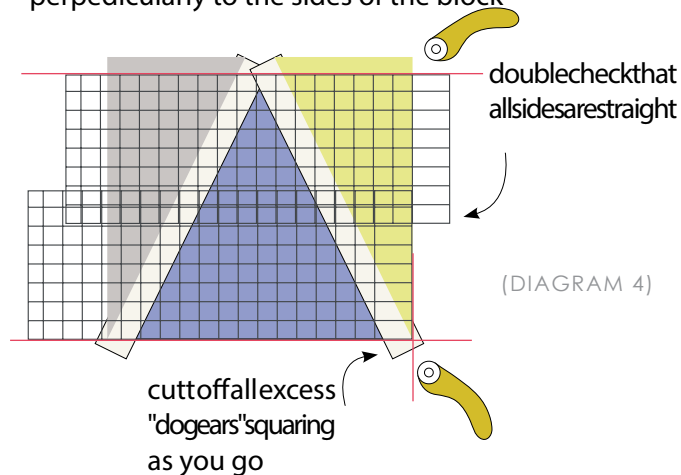
- Grab the triangle from fabric **C**, align it at the top and sew it to the LEFT side of the piece. Repeat with the triangle from fabric **D**, but sew it to the right side of the piece. Press seams open (DIAGRAM 3).



color option: for the main blocks use fabric LIB-8209 to replace fabric LIB-7207 and fabric LIB-8207 to replace fabric LIB-7209

- Next you will trim of the excess fabric since it is easier to work with a squared block. Use a ruler and a rotary cutter to do this step (DIAGRAM 4)

leave 1/4" from the top triangle corner toward the outside for seam allowance. Make sure you cut perpedicularly to the sides of the block



- Repeat the previous process until you finish eight identical blocks (block a)
- For the second fabric combination of this block (block b) repeat the same process as the first combination using a template triangle form fabric **B**, two diagonal strips from fabric **H**, one triangle from fabric **E** and one triangle from fabric **F**. You will also complete eight of these blocks for a total of sixteen blocks for the whole quilt. Set aside.

SASHING ASSEMBLY

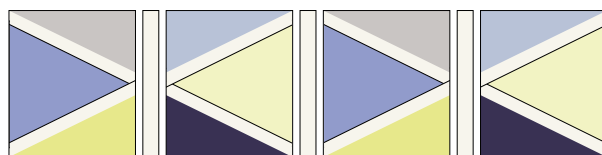
Sew all rights sides together with 1/4" seam allowance. Press open.

Horizontal Sashing

- Grab all the pieces you cut under "Horizontal Sashing" and create five long individual strips using four 1 1/2" x 11 1/2" strips from fabric **H**, and three 1 1/2" x 1 1/2" squares also from fabric **H** for each long strip. Begin with a strip and alternate. Set aside

Vertical Sashing

- The "vertical sashing strips" are sewn in between all blocks of the quilt. Follow the cover photo to determine the order and rotation of the blocks, and place a "vertical sashing" strip in between each of them (DIAGRAM 5). Repeat for all four rows.



blocka-sashing-blockb-sashing-blocka-sashing-blockb

ASSEMBLING THE TOP

Sew all right sides together with $\frac{1}{4}$ " seam allowance. Press open.

- Follow the cover photo to assemble the top of this quilt. Go from top following a horizontal order. Begin with one of the border strips sewing it to one of the horizontal sashing strips on the long sides. Continue with the first row, then another horizontal sashing, second row, sashing, third row, sashing, fourth row, sashing, and finish with the other border strip.

QUILT ASSEMBLY

Sew right sides together.

- Place BACKING FABRIC on a large surface wrong side up. Stretch it with masking tape against that surface.
- Place BATTING on top of backing fabric.
- Place TOP on top of the batting with right side facing up. Smooth away wrinkles using your hands.
- Pin all layers together and baste with basting thread, using long stitches. You can also use safety pins to join the layers.
- Machine or hand quilt starting at the center and working towards the corners. Remember that quilting motives are a matter of personal preference. Have fun choosing yours!
- After you finished, trim excess of any fabric or batting, squaring the quilt to proceed to bind it.

BINDING

Sew right sides together.

- Cut enough strips $1\frac{1}{2}$ " wide by the width of the fabric **G** to make a final strip 212" long. Start sewing the binding strip in the middle of one of the sides of the quilt, placing the strip right side down and leaving an approximated 5" tail. Sew with $\frac{1}{4}$ " seam allowance (using straight stitch), aligning the strip's raw edge with the quilt top's raw edge.
- Stop stitching $\frac{1}{4}$ " before the edge of the quilt (DIAGRAM B 1). Clip the threads. Remove the quilt from under the machine presser foot. Fold the strip in a motion of 45° and upward, pressing with your fingers (DIAGRAM B2). Hold this fold with your finger, bring the strip down in line with the next edge, making a horizontal fold that aligns with the top edge of the quilt (DIAGRAM B3). Start sewing at $\frac{1}{4}$ " of the border, stitching all the layers. Do the same in the four corners of the quilt.
- Stop stitching before you reach the last 5 or 6 inches. Cut the threads and remove the quilt from under the machine presser foot. Lay the loose ends of the binding flat along the quilt edge, folding the ends back on themselves where they meet. Press them together to form a crease. Using this crease as the stitching line, sew the two open ends of the binding with right sides together (you can help yourself marking with a pencil if the crease is difficult to see).
- Trim seam to $\frac{1}{4}$ " and press open. Complete the sewing. Turn binding to back of the quilt, turn raw edge inside and stitch by hand using blind stitch.

DIAGRAM B1



DIAGRAM B2

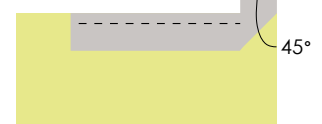
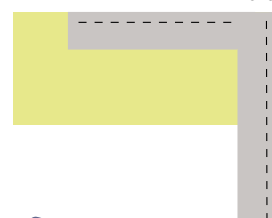
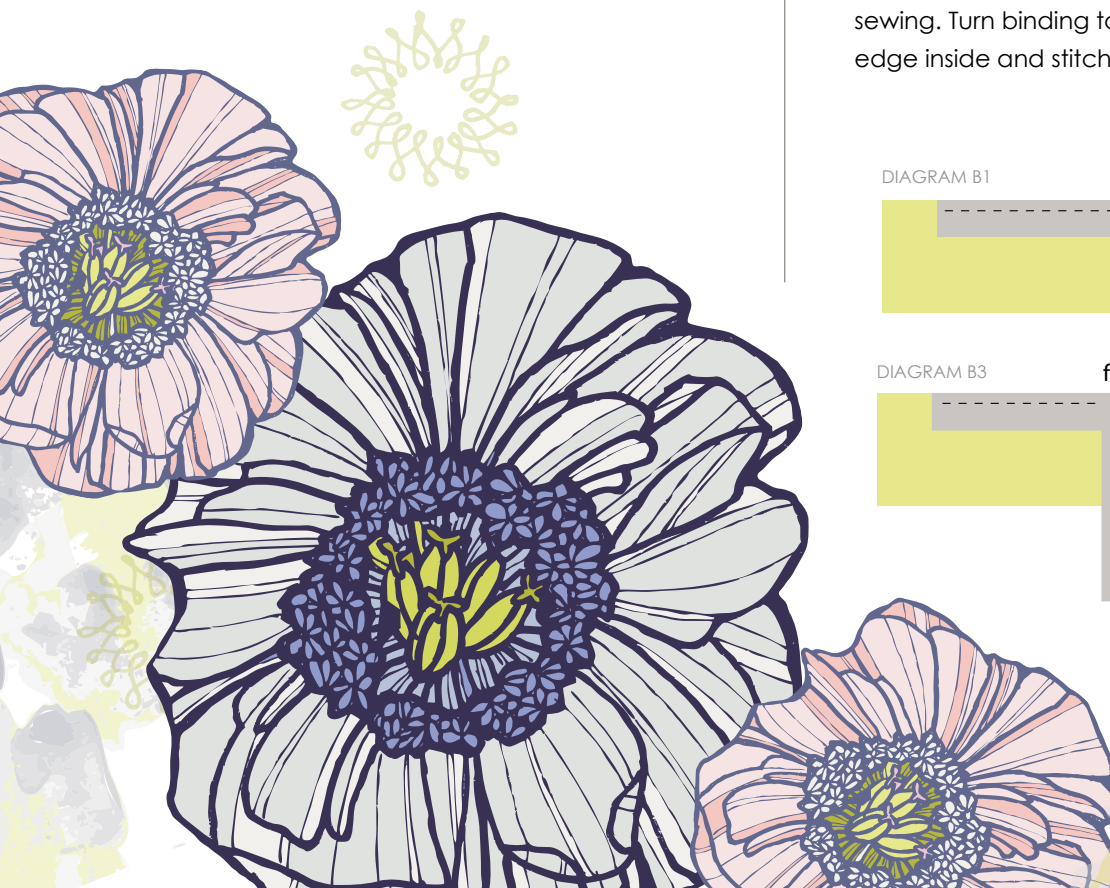


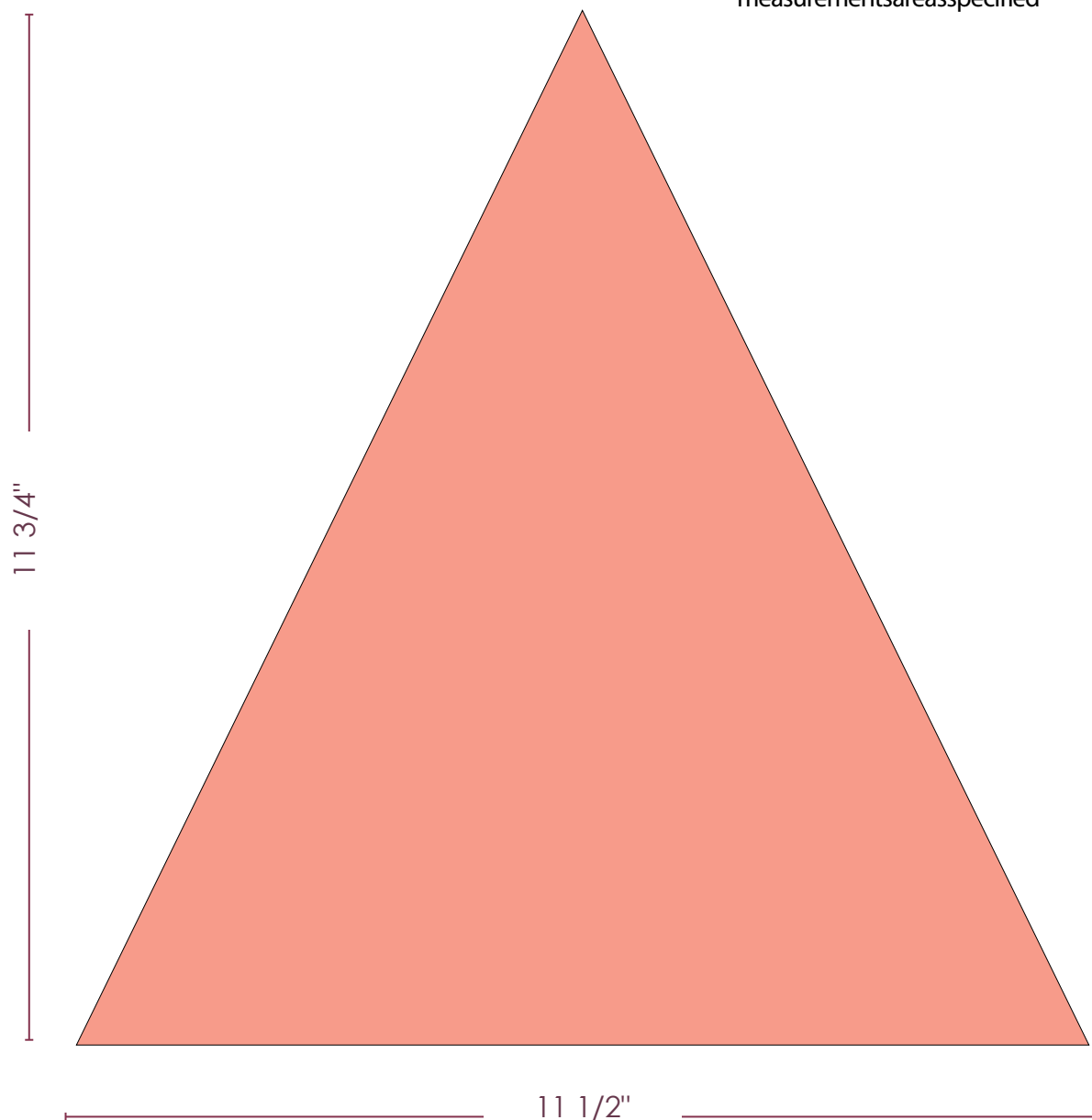
DIAGRAM B3



CONGRATULATIONS!



Scale this triangle 200% so that the measurements are as specified



Feel the difference

For more free patterns visit:

artgalleryfabrics.com

NOTE: While all possible care has been taken to ensure the accuracy of this pattern, we are not responsible for printing errors or the way in which individual work varies. Please read instructions carefully before starting the construction of this quilt. If desired, wash and iron your fabrics before starting to cut.

© 2013 Courtesy of Art Gallery Quilts LLC.
All Rights Reserved.