

GOLDEN *afternoon*



{ FEATURING DREAMIN' VINTAGE COLLECTION }



Art Gallery
FABRICS

FREE PROJECT SHEET

DESIGNED BY JENI BAKER

QUILT DESIGNED BY JENI BAKER

GOLDEN *afternoon*

FINISHED SIZE: 70" X 70"

To download the instructions
for this pattern visit

artgalleryfabrics.com

KIT QUANTITY

VR-50020	1/4 yd.
VR-50021	1/4 yd.
VR-50022	1/4 yd.
VR-50023	1/4 yd.
VR-50024	1/4 yd.
VR-50025	1/4 yd.
VR-50026	1/4 yd.
VR-50027	1/4 yd.
VR-50028	1/4 yd.
VR-50029	1/4 yd.
VR-60020	1/4 yd.
VR-60021	5/8 yd.
VR-60022	1/4 yd.
VR-60023	1/4 yd.
VR-60024	1/4 yd.
VR-60025	1/4 yd.
VR-60026	1/4 yd.
VR-60027	1/4 yd.
VR-60028	1/4 yd.
VR-60029	1/4 yd.
Backing	4 1/2 yd.



DREAMIN' *Vintage* by JENI BAKER

TICKLED PINK



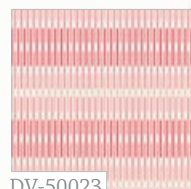
DV-50020
Lazy Daisy Raspberry



DV-50021
Bloomy Nectarine



DV-50022
Pretty Poesies Lime



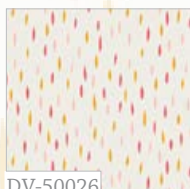
DV-50023
Tonal Melodie Blush



DV-50024
Cottage Treasures Pink



DV-50025
Mod Pop Carnation



DV-50026
Jolly Dots Petal



DV-50027
Quiet Lovely Sugar



DV-50028
Triangularly Yours Carrot



DV-50029
Sweet Meadow Rose

MERRY BERRY



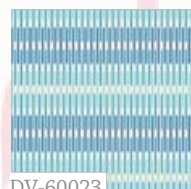
DV-60020
Lazy Daisy Plum



DV-60021
Bloomy Citronelle



DV-60022
Pretty Poesies Jam



DV-60023
Tonal Melodie Fresh



DV-60024
Cottage Treasures Berry



DV-60025
Mod Pop Lavender



DV-60026
Jolly Dots Lilac



DV-60027
Quiet Lovely Tart



DV-60028
Triangularly Yours Olive



DV-60029
Sweet Meadow Orchid



QUILT DESIGNED BY JENI BAKER

FABRICS DESIGNED BY JENI BAKER FOR
ART GALLERY FABRICS



GOLDEN *afternoon*

FINISHED SIZE: 70" X 70"

To download the instructions
for this pattern visit

artgalleryfabrics.com

FABRIC REQUIREMENTS

Fabric A	VR-50020	1/4 yd.
Fabric B	VR-50021	1/4 yd.
Fabric C	VR-50022	1/4 yd.
Fabric D	VR-50023	1/4 yd.
Fabric E	VR-50024	1/4 yd.
Fabric F	VR-50025	1/4 yd.
Fabric G	VR-50026	1/4 yd.
Fabric H	VR-50027	1/4 yd.
Fabric I	VR-50028	1/4 yd.
Fabric J	VR-50029	1/4 yd.
Fabric K	VR-60020	1/4 yd.
Fabric L	VR-60021	5/8 yd.
Fabric M	VR-60022	1/4 yd.
Fabric N	VR-60023	1/4 yd.
Fabric O	VR-60024	1/4 yd.
Fabric P	VR-60025	1/4 yd.
Fabric Q	VR-60026	1/4 yd.
Fabric R	VR-60027	1/4 yd.
Fabric S	VR-60028	1/4 yd.
Fabric T	VR-60029	1/4 yd.

Backing Fabric

VR-50020 4 1/2 yds. (suggested)

Binding Fabric

VR-60021 (Fabric **L**) (included)

CUTTING DIRECTIONS

1/4" seam allowances are included.

FOR ROWS CUT

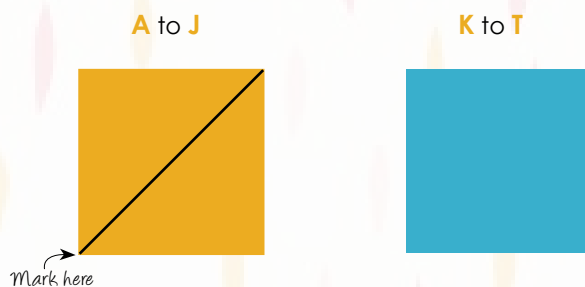
- One (1) 8" x WOF strips from fabric **A** Sub cut strip into 5 (five) 8" squares.
- One (1) 8" x WOF strips from fabric **B** Sub cut strip into 5 (five) 8" squares.
- One (1) 8" x WOF strips from fabric **C** Sub cut strip into 5 (five) 8" squares.
- One (1) 8" x WOF strips from fabric **D** Sub cut strip into 5 (five) 8" squares.
- One (1) 8" x WOF strips from fabric **E** Sub cut strip into 5 (five) 8" squares.
- One (1) 8" x WOF strips from fabric **F** Sub cut strip into 5 (five) 8" squares.
- One (1) 8" x WOF strips from fabric **G** Sub cut strip into 5 (five) 8" squares.
- One (1) 8" x WOF strips from fabric **H** Sub cut strip into 5 (five) 8" squares.
- One (1) 8" x WOF strips from fabric **I** Sub cut strip into 5 (five) 8" squares.
- One (1) 8" x WOF strips from fabric **J** Sub cut strip into 5 (five) 8" squares.
- One (1) 8" x WOF strips from fabric **K** Sub cut strip into 5 (five) 8" squares.
- One (1) 8" x WOF strips from fabric **L** Sub cut strip into 5 (five) 8" squares.
- One (1) 8" x WOF strips from fabric **M** Sub cut strip into 5 (five) 8" squares.
- One (1) 8" x WOF strips from fabric **N** Sub cut strip into 5 (five) 8" squares.
- One (1) 8" x WOF strips from fabric **O** Sub cut strip into 5 (five) 8" squares.
- One (1) 8" x WOF strips from fabric **P** Sub cut strip into 5 (five) 8" squares.
- One (1) 8" x WOF strips from fabric **Q** Sub cut strip into 5 (five) 8" squares.
- One (1) 8" x WOF strips from fabric **R** Sub cut strip into 5 (five) 8" squares.
- One (1) 8" x WOF strips from fabric **S** Sub cut strip into 5 (five) 8" squares.
- One (1) 8" x WOF strips from fabric **T** Sub cut strip into 5 (five) 8" squares.



HALF-SQUARE TRIANGLE CONSTRUCTION

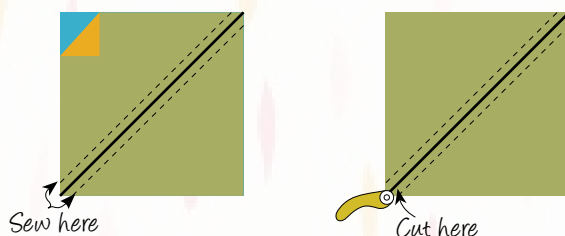
- Using a water-soluble marker or a pencil, mark a diagonal line across the wrong side of all the Fabric **A** - Fabric **J** squares (DIAGRAM 1)

(DIAGRAM 1)



- Place one of the marked squares right sides together with an unmarked Fabric **K** - Fabric **T** square randomly.
- Sew 1/4" on both sides of the marked line.
- Cut piece in half along the drawn line. Press seams open. Trim half-square triangles to 7.5" square.
- Pair up the rest of the marked squares (Fabric A-J) with the unmarked squares (Fabric K-T). Repeat to make a total of 100 half-square triangles.

(DIAGRAM 2)



ASSEMBLING THE TOP

Sew all right sides together with 1/4" seam allowance. Press open.

- Follow the cover photo to help you in the arrangement of the half-square triangle units in a diamond layout using the illustration as a guide. There will be 10 rows of 10 units each.
- Sew blocks together in each row, press seams in one direction, alternating directions every other row.
- Sew rows together, press seams in one direction.

QUILT ASSEMBLY

Sew right sides together.

- Place BACKING FABRIC on a large surface wrong side up. Stretch it with masking tape against that surface.
- Place BATTING on top of backing fabric.
- Place TOP on top of the batting with right side facing up. Smooth away wrinkles using your hands.
- Pin all layers together and baste with basting thread, using long stitches. You can also use safety pins to join the layers.
- Machine or hand quilt starting at the center and working towards the corners. Remember that quilting motives are a matter of personal preference. Have fun choosing yours!
- After you finished, trim excess of any fabric or batting, squaring the quilt to proceed to bind it.

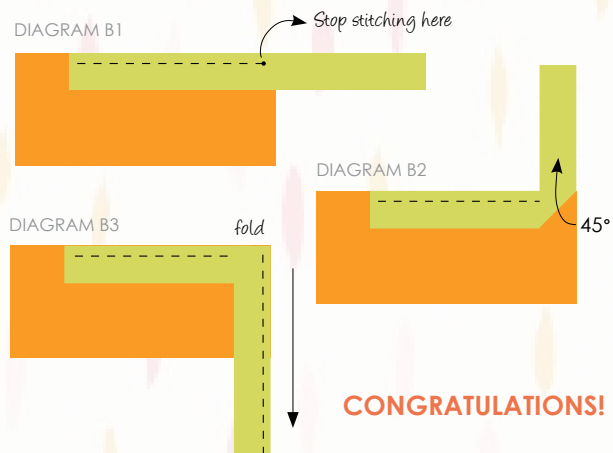
BINDING

Sew right sides together.

- Cut enough strips 1 1/2" wide by the width of the fabric **L** to make a final strip 290" long. Start sewing the binding strip in the middle of one of the sides of the quilt, placing the strip right side down and leaving an approximated 5" tail. Sew with 1/4" seam allowance (using straight stitch), aligning the strip's raw edge with the quilt top's raw edge.



- Stop stitching $\frac{1}{4}$ " before the edge of the quilt (DIAGRAM B 1). Clip the threads. Remove the quilt from under the machine presser foot. Fold the strip in a motion of 45° and upward, pressing with your fingers (DIAGRAM B2). Hold this fold with your finger, bring the strip down in line with the next edge, making a horizontal fold that aligns with the top edge of the quilt (DIAGRAM B3). Start sewing at $\frac{1}{4}$ " of the border, stitching all the layers. Do the same in the four corners of the quilt.
- Stop stitching before you reach the last 5 or 6 inches. Cut the threads and remove the quilt from under the machine presser foot. Lay the loose ends of the binding flat along the quilt edge, folding the ends back on themselves where they meet. Press them together to form a crease. Using this crease as the stitching line, sew the two open ends of the binding with right sides together (you can help yourself marking with a pencil if the crease is difficult to see).
- Trim seam to $\frac{1}{4}$ " and press open. Complete the sewing. Turn binding to back of the quilt, turn raw edge inside and stitch by hand using blind stitch.



Feel the difference

For more free patterns visit:

artgalleryfabrics.com

NOTE: While all possible care has been taken to ensure the accuracy of this pattern, we are not responsible for printing errors or the way in which individual work varies. Please read instructions carefully before starting the construction of this quilt. If desired, wash and iron your fabrics before starting to cut.

© 2014 Courtesy of Art Gallery Quilts LLC.
All Rights Reserved.