

# GĪTĀÑĀ

{ FEATURING **INDIE** COLLECTION }



**FREE PROJECT SHEET**

DESIGNED WITH LOVE BY Pat Bravo

Art Gallery  
FABRICS



QUILT DESIGNED  
WITH LOVE BY **Pat Bravo**

# GITANA

FINISHED SIZE: 70½" × 68½"

BLOCK SIZE: 10" × 10"

To download the instructions for  
this pattern visit

[artgalleryfabrics.com](http://artgalleryfabrics.com)



COLOR OPTION

## INDIE

by Pat Bravo

MIDNIGHT TEMPLE



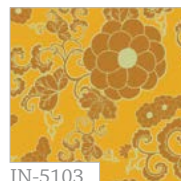
IN-5100  
Wonderlust Luna



IN-5105  
Marqueterie Ginger



IN-5107  
Royal Nature Mist



IN-5103  
Dynasty Saffron



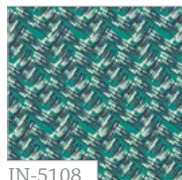
IN-5102  
Afro Fusion Dusk



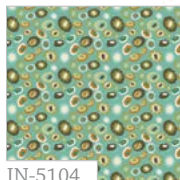
IN-5106  
Geisha Bliss



IN-5101  
Hidden Treasures Gem



IN-5108  
Tapestry Calypso



IN-5104  
Artist Kisses Mint



IN-5110  
Artist Kisses Lime

### KIT QUANTITY

IN-5106	1/2 yd.	IN-5100	1 3/8 yd.
IN-5103	1 yd.	IN-5102	1 1/8 yd.
IN-5101	7/8 yd.	IN-5107	1 yd.
IN-5105	1 yd.	Backing	4 1/2 yd.
IN-5204	3/4 yd.		

SUNLIGHT BAZAAR



IN-5200  
Wonderlust Soleil



IN-5205  
Marqueterie Berry



IN-5207  
Royal Nature Nectar



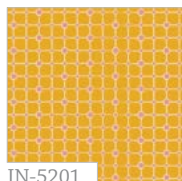
IN-5203  
Dynasty Mandarin



IN-5202  
Afro Fusion Dawn



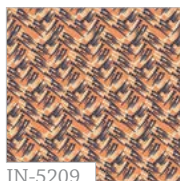
IN-5206  
Geisha Passion



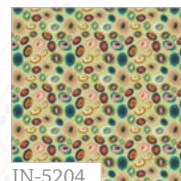
IN-5201  
Hidden Treasures Gold



IN-5208  
Tapestry Spice



IN-5209  
Tapestry Salmon



IN-5204  
Artist Kisses Pastel

### COLOR OPTION KIT QUANTITY

IN-5206	7/8 yd.	IN-5207	3/8 yd.
IN-5203	1 yd.	IN-5202	7/8 yd.
IN-5201	7/8 yd.	IN-5200	1 7/8 yd.
IN-5205	1 yd.	Backing	4 1/2 yd.
IN-5110	3/4 yd.		



QUILT DESIGNED  
WITH LOVE BY **Pat Bravo**

# GITANA

FINISHED SIZE: 70½" x 68½"  
BLOCK SIZE: 10" x 10"

## ORIGINAL VERSION



### FABRIC REQUIREMENTS

Fabric <b>A</b>	IN-5106	½ yd.
Fabric <b>B</b>	IN-5103	1 yd.
Fabric <b>C</b>	IN-5101	7/8 yd.
Fabric <b>D</b>	IN-5105	1 yd.
Fabric <b>E</b>	IN-5204	¾ yd.
Fabric <b>F</b>	IN-5100	1 3/8 yd.
Fabric <b>G</b>	IN-5102	1 1/8 yd.
Fabric <b>H</b>	IN-5107	1 yd.

#### Backing Fabric

IN-5106 (Fabric **A**) 5 yds.  
(suggested)

#### Binding Fabric

IN-5102 (Fabric **G**) (included)

### other materials

10 1/2" 45° Triangle Ruler **OPTIONAL**

*If you don't have the ruler, use  
the template provided at the  
the end of the pdf.*

FABRICS DESIGNED BY AGF-STUDIO  
QUILT CONSTRUCTED BY PRISCILLA RAMIREZ FOR  
**ART GALLERY FABRICS**



### CUTTING DIRECTIONS

*¼" seam allowances are included.*

#### BLOCK 1 (18 TOTAL)

For each block, cut:

- 2 (two) 4 1/8" Fabric **A** squares, cut in half diagonally for a total 4 triangles 36 squares in total.
- 4 (four) 5 1/4" x 2 7/8" Fabric **G** rectangles 72 rectangles in total.
- 2 (two) 2 1/2" Fabric **B** squares, cut in half diagonally for a total of 4 triangles 36 squares in total.
- 2 (two) 2 1/2" Fabric **E** squares, cut in half diagonally for a total 4 triangles 36 squares in total.
- 4 (four) 5 1/4" x 1 3/8" Fabric **E** rectangles 72 rectangles in total.
- 2 (two) 3" Fabric **F** squares, cut in half diagonally for a total 4 triangles 36 squares in total.
- 1 (one) 2 1/4" fabric **C** circle (12 total)
- 1 (one) 2 1/4" fabric **B** circle (6 total)

#### BLOCK 2 (12 TOTAL)

Cut a total of 6 WOF strips of each fabric:

- 3 (three) 4 1/4" WOF strips of Fabric **H**
- 3 (three) 4 1/4" WOF strips of Fabric **D**
- 3 (three) 4" WOF strips of Fabric **H**
- 3 (three) 4" WOF strips of Fabric **D**

#### DIVIDING PANELS

8 (eight) 60½" x 1½" Fabric **B** strips.

Join 3(three) 20½" x 1½" strips to obtain each of these. You will cut a total of 12 WOF strips for all 8 strips.

4 (four) 60½" x 1½" Fabric **C** strips

Join 3(three) 20½" x 1½" strips to obtain each of these. You will cut a total of 6 WOF strips for all 4 strips.

#### INNER BORDER

- 2 (two) 60½" x 1½" Fabric **C** strips\*
- 2 (two) 64½" x 1½" Fabric **C** strips\*

#### OUTER BORDER

- 2 (two) 62½" x 3½" Fabric **F** strips\*
- 2 (two) 70½" x 3½" Fabric **F** strips\*

*\* In order to get these long strips you need  
to join two or more Width Of Fabric strips together.*

## COLOR OPTION



### FABRIC REQUIREMENTS

Fabric <b>A</b>	IN-5206	7/8 yd.
Fabric <b>B</b>	IN-5203	1 yd.
Fabric <b>C</b>	IN-5201	7/8 yd.
Fabric <b>D</b>	IN-5205	1 yd.
Fabric <b>E</b>	IN-5110	3/4 yd.
Fabric <b>F</b>	IN-5207	3/8 yd.
Fabric <b>G</b>	IN-5202	7/8 yd.
Fabric <b>H</b>	IN-5200	1 7/8 yd.

#### Backing Fabric

IN-5206 (Fabric **A**) 5 yds.  
(suggested)

#### Binding Fabric

IN-5106 (Fabric **A**) (included)

### other materials

10 1/2" 45° Triangle Ruler OPTIONAL

*If you don't have the ruler, use the template provided at the end of the pdf.*

## CUTTING DIRECTIONS

*1/4" seam allowances are included.*

### BLOCK 1 (18 TOTAL)

For each block, cut:

- 2 (two) 4 1/8" Fabric **A** squares, cut in half diagonally for a total 4 triangles 36 squares in total.
- 4 (four) 5 1/4" x 2 7/8" Fabric **G** rectangles 72 rectangles in total.
- 2 (two) 2 1/2" Fabric **B** squares, cut in half diagonally for a total of 4 triangles 36 squares in total.
- 2 (two) 2 1/2" Fabric **E** squares, cut in half diagonally for a total 4 triangles 36 squares in total.
- 4 (four) 5 1/4" x 1 3/8" Fabric **E** rectangles 72 rectangles in total.
- 2 (two) 3" Fabric **F** squares, cut in half diagonally for a total 4 triangles 36 squares in total.
- 1 (one) 2 1/4" fabric **C** circle (12 total)
- 1 (one) 2 1/4" fabric **B** circle (6 total)

### BLOCK 2 (12 TOTAL)

Cut a total of 6 WOF strips of each fabric:

- 3 (three) 4 1/4" WOF strips of Fabric **H**
- 3 (three) 4 1/4" WOF strips of Fabric **D**
- 3 (three) 4" WOF strips of Fabric **H**
- 3 (three) 4" WOF strips of Fabric **D**

### DIVIDING PANELS

8 (eight) 60 1/2" x 1 1/2" Fabric **B** strips.

Join 3(three) 20 1/2" x 1 1/2" strips to obtain each of these. You will cut a total of 12 WOF strips for all 8 strips.

4 (four) 60 1/2" x 1 1/2" Fabric **C** strips

Join 3(three) 20 1/2" x 1 1/2" strips to obtain each of these. You will cut a total of 6 WOF strips for all 4 strips.

### INNER BORDER

- 2 (two) 60 1/2" x 1 1/2" Fabric **C** strips\*
- 2 (two) 64 1/2" x 1 1/2" Fabric **C** strips\*

### OUTER BORDER

- 2 (two) 62 1/2" x 3 1/2" Fabric **H** strips\*
- 2 (two) 70 1/2" x 3 1/2" Fabric **H** strips\*

*\* In order to get these long strips you need to join two or more Width Of Fabric strips together.*

Both the **ORIGINAL** and the **COLOR OPTION** quilts are constructed in the same way with a direct replacement of most fabrics. But note that there are slight variations in the borders and binding that will be specified in a box like this one.



## BLOCK CONSTRUCTION

Sew all rights sides together with 1/4" seam allowance. Press open.

### BLOCK 1

- This block is conformed by four identically pieced squares which are then sewn mirroring each other. There are two variations of fabric placement which will be explained below. Please read the instructions carefully.

Here is how to sew EACH square

- Grab 1 triangle from fabric **A**, 1 of the rectangles from fabric **G**, 1 rectangle from fabric **E**, and 1 triangle from fabric **F**. Find the center of each piece by folding it in half and pressing it with your finger tips to create a crease. Attach each piece to the next in the order **AGEF** making sure you align all the centers (DIAGRAM 1).



DIAGRAM 1

- Press seams open
- Grab 1 triangle from fabric **B**, and 1 triangle from fabric **E**. Here is where the variation occurs, for half of the squares, you will attach the fabric **B** triangle on the right side of fabric **G** and the fabric **E** triangle on the left (a). For the other half you will do the opposite (b). Again make sure you find the centers of each piece and align them there (DIAGRAM 2). After pressing, square the pieces with a ruler following the triangle from fabric **F**.

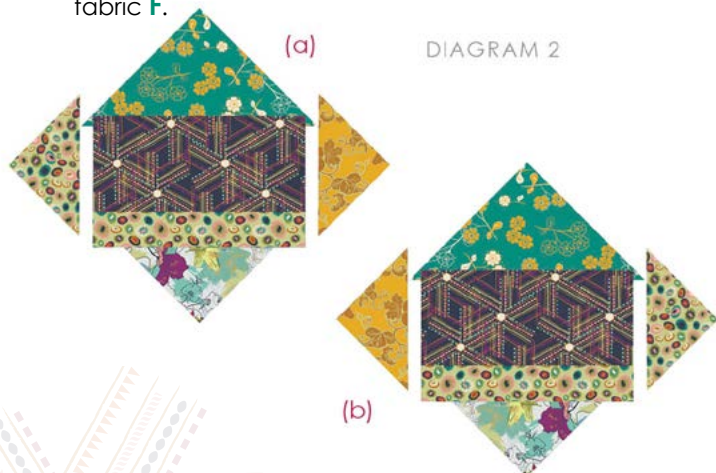


DIAGRAM 2

- You will construct 36 of the (a) version mini blocks, and 36 of the (b) version mini blocks.

- Then grab two squares of each version and arrange them so that all triangles from fabric **F** meet in the middle and so that the two from the same version meet diagonally. This is the complete pieced part of your block (DIAGRAM 3).

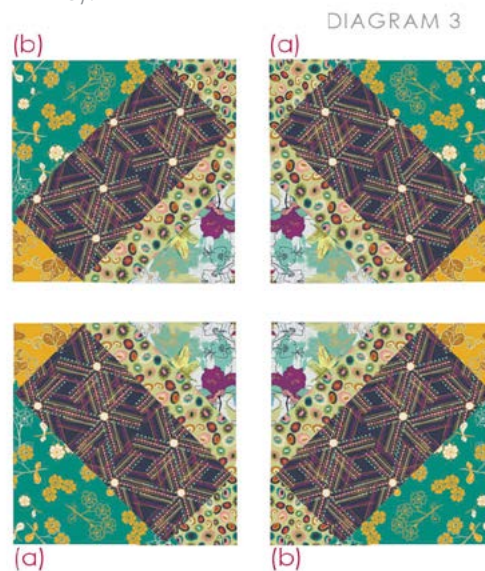


DIAGRAM 3

## APPLIQUÉ CIRCLES

- Grab one 2 1/4" circle from fabric **C**. Press all of the edges 1/4" toward the wrong side of the fabric so that they are all clean for the appliqué process.
- Place the circle on the square created in the intersection of four attached mini blocks. Make sure that the circle is centered, and apply it on with a blanket stitch\* in a matching thread color (DIAGRAM 4).
- Repeat the previous steps until you have applied 12 circles from fabric **C**, and 6 circles from fabric **B**; one on each block.

DIAGRAM 4



Stitch shown here on a contrasting color

\*A blanket stitch is a basic sewing stitch in which widely spaced, interlocking loops, or purls, are formed. Used for appliqué, as a decorative finish for edges, etc.

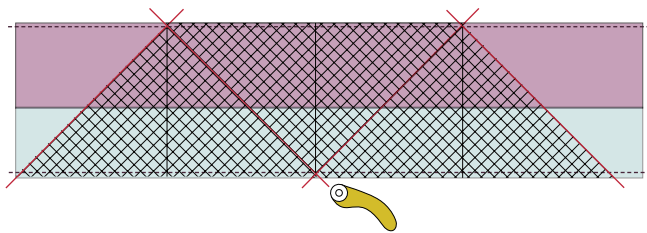


## BLOCK 2

Sew all rights sides together with  $\frac{1}{4}$ " seam allowance. Press open.

*The Tube Method is used for this block*

- Grab 1 WOF strip from each of the following:  $4\frac{1}{4}$ " **H**, 4" **D**, 4" **H**,  $4\frac{1}{4}$ " **D**. Join them together in that order, even joining the first to the last in order to form a "tube"
- Use a ruler to cut  $45^\circ$  triangles and form 10  $1\frac{1}{2}$ " squares (DIAGRAM 5).
- From every WOF unit you will obtain 4 squares



- Remove the thread that remains at the tip of each triangle so that you can open it fully. Press all seams open (DIAGRAM 6).
- Repeat the previous steps three times so that you have twelve squares in total.

DIAGRAM 6



## DIVIDING PANEL

Sew all rights sides together with  $\frac{1}{4}$ " seam allowance. Press open.

- Grab two of the  $60\frac{1}{2}$ " x  $1\frac{1}{2}$ " strips from fabric B and one of the  $60\frac{1}{2}$ " x  $1\frac{1}{2}$ " strip from fabric C. Join them in the order BCB on the length sides.
- Repeat the previous step until you have four dividing strip panels

## ASSEMBLING THE TOP

Sew all rights sides together with  $\frac{1}{4}$ " seam allowance. Press open.

- For this quilt you will first assemble the columns. Please refer to the cover photo to determine the position of each block.
- After you have assembled all columns of Block 1 (a & b), and all the columns of Block 2, you can start to join the block columns to the dividing panels. MAKE SURE you follow the cover photo to determine the order.

## BORDERS ASSEMBLY

Sew all rights sides together with  $\frac{1}{4}$ " seam allowance. Press open.

*For the inner border*

- Sew two  $60\frac{1}{2}$ " x  $1\frac{1}{2}$ " Fabric **C** strips along the left & right sides of the quilt top.
- Sew the other two  $64\frac{1}{2}$ " x  $1\frac{1}{2}$ " Fabric **C** strips along the top & bottom sides of the quilt top.

*For the outer border*

- Sew two  $62\frac{1}{2}$ " x  $3\frac{1}{2}$ " Fabric **F** strips along the left & right sides of the quilt top.
- Sew the other two  $70\frac{1}{2}$ " x  $3\frac{1}{2}$ " Fabric **F** strips along the top & bottom sides of the quilt top.

For the outer border of the **COLOR OPTION** quilt, you will replace fabric **F** for fabric **H**.

## QUILT ASSEMBLY

Sew right sides together.

- Place BACKING FABRIC on a large surface wrong side up. Stretch it with masking tape against that surface.
- Place BATTING on top of backing fabric.
- Place TOP on top of the batting with right side facing up. Smooth away wrinkles using your hands.
- Pin all layers together and baste with basting thread, using long stitches. You can also use safety pins to join the layers.
- Machine or hand quilt starting at the center and working towards the corners. Remember that quilting motives are a matter of personal preference. Have fun choosing yours!
- After you finished, trim excess of any fabric or batting, squaring the quilt to proceed to bind it.



## BINDING

*Sew right sides together.*

- Cut enough strips  $1\frac{1}{2}$ " wide by the width of the fabric **G** to make a final strip 290" long. Start sewing the binding strip in the middle of one of the sides of the quilt, placing the strip right side down and leaving an approximated 5" tail. Sew with  $\frac{1}{4}$ " seam allowance (using straight stitch), aligning the strip's raw edge with the quilt top's raw edge.
- Stop stitching  $\frac{1}{4}$ " before the edge of the quilt (DIAGRAM B 1). Clip the threads. Remove the quilt from under the machine presser foot. Fold the strip in a motion of  $45^\circ$  and upward, pressing with your fingers (DIAGRAM B2). Hold this fold with your finger, bring the strip down in line with the next edge, making a horizontal fold that aligns with the top edge of the quilt (DIAGRAM B3). Start sewing at  $\frac{1}{4}$ " of the border, stitching all the layers. Do the same in the four corners of the quilt.
- Stop stitching before you reach the last 5 or 6 inches. Cut the threads and remove the quilt from under the machine presser foot. Lay the loose ends of the binding flat along the quilt edge, folding the ends back on themselves where they meet. Press them together to form a crease. Using this crease as the stitching line, sew the two open ends of the binding with right sides together (you can help yourself marking with a pencil if the crease is difficult to see).
- Trim seam to  $\frac{1}{4}$ " and press open. Complete the sewing. Turn binding to back of the quilt, turn raw edge inside and stitch by hand using blind stitch.

For the binding of the **COLOR OPTION** quilt, you will replace fabric **G** for fabric **A**.

DIAGRAM B1

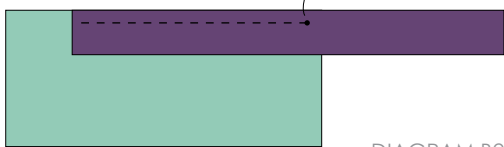
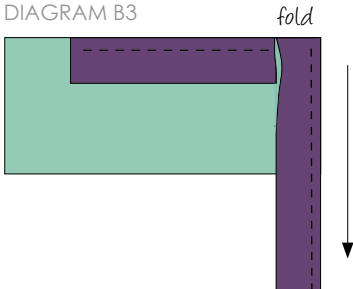


DIAGRAM B2



DIAGRAM B3



**CONGRATULATIONS!**



To see more patterns, fabrics,  
and lots of inspiration visit:

[patbravo.com](http://patbravo.com)



*Feel the difference*

[artgalleryfabrics.com](http://artgalleryfabrics.com)

© 2012 Courtesy of Art Gallery Quilts LLC.  
All Rights Reserved.

3804 N 29th Ave. Hollywood, FL 33020  
PH: 888.420.5399 FX: 425.799.6103

*NOTES: While all possible care has been taken to ensure the accuracy of this pattern, we are not responsible for printing errors or the way in which individual work varies. Please read instructions carefully before starting the construction of this quilt. If desired, wash and iron your fabrics before starting to cut.*





# ĠĪṬĀÑĀ

Provided is half of the template necessary for this quilt. Use another sheet of paper to cut the template on fold where specified, and then you will have the true size of the template to be used in the *cutting* and *construction* instructions of this quilt.

10 3/4"

CUT ON FOLD

7 5/8"



[patbravo.com](http://patbravo.com)

[artgalleryfabrics.com](http://artgalleryfabrics.com)

