



fly home

{ FEATURING NORDIKA COLLECTION }



Art Gallery
FABRICS

FREE PROJECT SHEET

DESIGNED BY JENI BAKER



fly home

FINISHED SIZE: 56" x 72"

BLOCK SIZE: 4" x 8"

To download the instructions for this pattern visit

artgalleryfabrics.com

ADDITIONAL BLENDER USED
PE-433 Snow



COLOR OPTION

Nördika by JENI BAKER

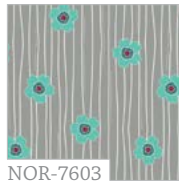
ALPINE VALLEY



NOR-7600
Tulip Vines Mint



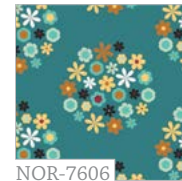
NOR-7604
Poppy Fields Caviar



NOR-7603
Flowerfall Jade



NOR-7602
Tartan Spirit Golden



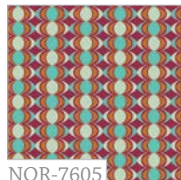
NOR-7606
Wildflowers Lagoon



NOR-7609
Whimsicöl Mist Panel



NOR-7608
Sweetish Turquoise



NOR-7605
Arctic Lights Aurora



NOR-7601
Stellar Skylight



NOR-7607
Folk Road Stone

COLOR OPTION
KIT QUANTITY

NOR-7600	3/8 yd.	NOR-7606	3/8 yd.
NOR-7601	3/8 yd.	NOR-7607	3/8 yd.
NOR-7602	3/8 yd.	NOR-7608	3/8 yd.
NOR-7603	3/8 yd.	NOR-7609	3/8 yd.
NOR-7604	3/8 yd.	PE-433	2 yd.
NOR-7605	3/8 yd.	Backing	3 3/4 yd.

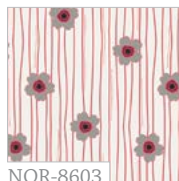
FROST VALLEY



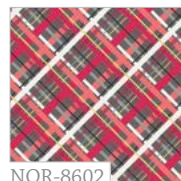
NOR-8600
Tulip Vines Licorice



NOR-8604
Poppy Fields Merlot



NOR-8603
Flowerfall Ruby



NOR-8602
Tartan Spirit Velvet



NOR-8606
Wildflowers Blaze



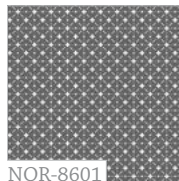
NOR-8609
Whimsicöl Tide Panel



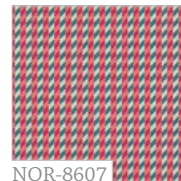
NOR-8608
Sweetish Seafoam



NOR-8605
Arctic Lights Polar



NOR-8601
Stellar Moonlight



NOR-8607
Folk Road Brick

KIT QUANTITY

NOR-8600	3/8 yd.	NOR-8606	3/8 yd.
NOR-8601	3/8 yd.	NOR-8607	3/8 yd.
NOR-8602	3/8 yd.	NOR-8608	3/8 yd.
NOR-8603	3/8 yd.	NOR-8609	3/8 yd.
NOR-8604	3/8 yd.	PE-433	2 yd.
NOR-8605	3/8 yd.	Backing	3 3/4 yd.



© 2013 Courtesy of Art Gallery Quilts LLC. All Rights Reserved.
3804 N 29th Ave. Hollywood, FL 33020 PH: 888.420.5399 FX: 425.799.6103

Feel the difference



FABRICS DESIGNED BY JENI BAKER FOR
ART GALLERY FABRICS



CUTTING DIRECTIONS

1/4" seam allowances are included.

FOR ALL COLUMNS CUT

Fabric A

Three (3) 4½" x WOF strip

- subcut 1 (one) strip into 4 (four) 4½" x 8½" rectangles
- subcut 1 (one) strip into 3 (three) 4½" x 8½" rectangles and 3 (three) 4½" squares
- subcut 1 (one) strip into 9 (nine) 4½" squares

Fabric B

Three (3) 4½" x WOF strip

- subcut 1 (one) strip into 4 (four) 4½" x 8½" rectangles
- subcut 1 (one) strip into 3 (three) 4½" x 8½" rectangles and 3 (three) 4½" squares
- subcut 1 (one) strip into 9 (nine) 4½" squares

Fabric C

Three (3) 4½" x WOF strip

- subcut 1 (one) strip into 4 (four) 4½" x 8½" rectangles
- subcut 1 (one) strip into 3 (three) 4½" x 8½" rectangles and 3 (three) 4½" squares
- subcut 1 (one) strip into 9 (nine) 4½" squares

Fabric D

Three (3) 4½" x WOF strip

- subcut 1 (one) strip into 4 (four) 4½" x 8½" rectangles
- subcut 1 (one) strip into 2 (two) 4½" x 8½" rectangles and 5 (five) 4½" squares
- subcut 1 (one) strip into 9 (nine) 4½" squares

Fabric E

Three (3) 4½" x WOF strip

- subcut 1 (one) strip into 4 (four) 4½" x 8½" rectangles
- subcut 1 (one) strip into 2 (two) 4½" x 8½" rectangles and 5 (five) 4½" squares
- subcut 1 (one) strip into 9 (nine) 4½" squares

Fabric F

Three (3) 4½" x WOF strip

- subcut 1 (one) strip into 4 (four) 4½" x 8½" rectangles
- subcut 1 (one) strip into 2 (two) 4½" x 8½" rectangles and 5 (five) 4½" squares
- subcut 1 (one) strip into 9 (nine) 4½" squares

Fabric G

Three (3) 4½" x WOF strip

- subcut 1 (one) strip into 4 (four) 4½" x 8½" rectangles
- subcut 1 (one) strip into 2 (two) 4½" x 8½" rectangles and 5 (five) 4½" squares
- subcut 1 (one) strip into 9 (nine) 4½" squares

FABRIC REQUIREMENTS

Fabric A	NOR-8600	3/8 yd.
Fabric B	NOR-8601	3/8 yd.
Fabric C	NOR-8602	3/8 yd.
Fabric D	NOR-8603	3/8 yd.
Fabric E	NOR-8604	3/8 yd.
Fabric F	NOR-8605	3/8 yd.
Fabric G	NOR-8606	3/8 yd.
Fabric H	NOR-8607	3/8 yd.
Fabric I	NOR-8608	3/8 yd.
Fabric J	NOR-8609	3/8 yd.
Fabric K	PE-433	2 yd.

Backing Fabric

NOR-8604 3 3/4 yd. (suggested)

Binding Fabric

NOR-8607 (Fabric H) (included)

NOTE: While all possible care has been taken to ensure the accuracy of this pattern, we are not responsible for printing errors or the way in which individual work varies.

Please read instructions carefully before starting the construction of this quilt. If desired, wash and iron your fabrics before starting to cut.

© 2013 Courtesy of Art Gallery Quilts LLC.
All Rights Reserved.

CUTTING DIRECTIONS (CONTD)

Fabric H

Three (3) 4½" x WOF strip

- subcut 1 (one) strip into 4 (four) 4½" x 8½" rectangles
- subcut 1 (one) strip into 2 (two) 4½" x 8½" rectangles and 5 (five) 4½" squares
- subcut 1 (one) strip into 7 (seven) 4½" squares

Fabric I

Three (3) 4½" x WOF strip

- subcut 1 (one) strip into 4 (four) 4½" x 8½" rectangles
- subcut 1 (one) strip into 2 (two) 4½" x 8½" rectangles and 5 (five) 4½" squares
- subcut 1 (one) strip into 7 (seven) 4½" squares

Fabric J

Three (3) 4½" x WOF strip

- subcut 1 (one) strip into 4 (four) 4½" x 8½" rectangles
- subcut 1 (one) strip into 2 (two) 4½" x 8½" rectangles and 5 (five) 4½" squares
- subcut 1 (one) strip into 7 (seven) 4½" squares

Fabric K

Seven (7) 8½" x WOF strip

- subcut 7 (seven) strips into 9 (nine) 4½" x 8½" rectangles

Total 4½" × 8½" print rectangles: 63

Total 4½" print squares: 126

Total 4½" × 8½" solid rectangles: 63

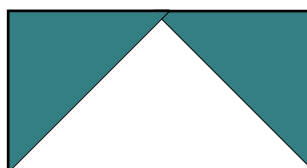
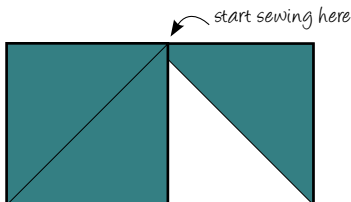
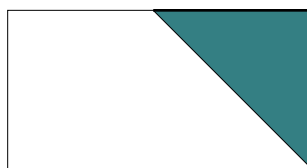
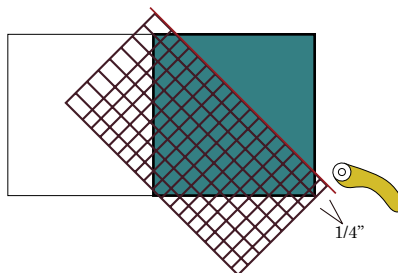
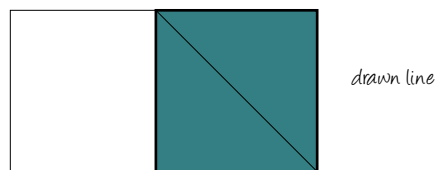
COLUMN CONSTRUCTION

Sew all rights sides together with ¼" seam allowance. Press open.

- Using a water-soluble marker or a pencil, mark a diagonal line across the wrong side of all your print squares.
- Place one square in the right corner of a Fabric K rectangle, right sides together. Stitch across the corner on the line you marked. Trim off corner, leaving a ¼" seam. Press corner up.
- Place a square of the same print in the left corner of the Fabric K rectangle, right sides together. Stitch across the corner on the line you marked. Trim off corner, leaving a ¼" seam. Press corner up (DIAGRAM 1).

start sewing here

DIAGRAM 1



- Repeat with all Fabric K rectangles to create 63 flying geese units.

CUTTING DIRECTIONS (CONTD)

- Arrange flying geese units and print rectangles using the illustration as a guide into 18 rows of 7.
- Sew blocks together in each row, press seams in one direction, alternating directions every other row.
- Sew rows together, press seams in one direction.



QUILT ASSEMBLY

Sew right sides together.

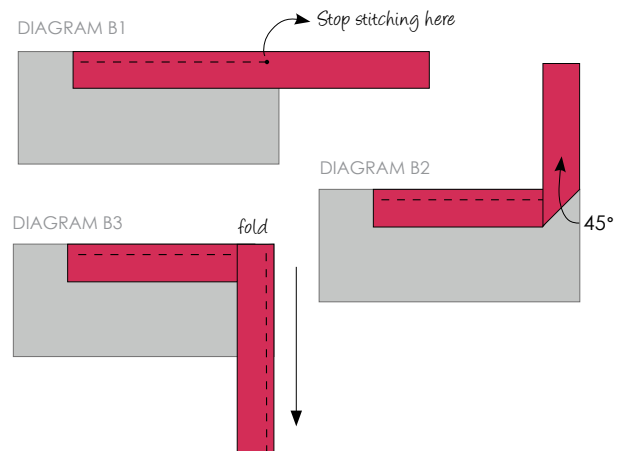
- Place BACKING FABRIC on a large surface wrong side up. Stretch it with masking tape against that surface.
- Place BATTING on top of backing fabric.
- Place TOP on top of the batting with right side facing up. Smooth away wrinkles using your hands.
- Pin all layers together and baste with basting thread, using long stitches. You can also use safety pins to join the layers.
- Machine or hand quilt starting at the center and working towards the corners. Remember that quilting motives are a matter of personal preference. Have fun choosing yours!
- After you finished, trim excess of any fabric or batting, squaring the quilt to proceed to bind it.

BINDING

Sew right sides together.

- Cut enough strips $1\frac{1}{2}$ " wide by the width of the fabric **H** to make a final strip 300" long. Start sewing the binding strip in the middle of one of the sides of the quilt, placing the strip right side down and leaving an approximated 5" tail. Sew with $\frac{1}{4}$ " seam allowance (using straight stitch), aligning the strip's raw edge with the quilt top's raw edge.
- Stop stitching $\frac{1}{4}$ " before the edge of the quilt (DIAGRAM B 1). Clip the threads. Remove the quilt from under the machine presser foot. Fold the strip in a motion of 45° and upward, pressing with your fingers (DIAGRAM B2). Hold this fold with your finger, bring the strip down in line with the next edge, making a horizontal fold that aligns with the top edge of the quilt (DIAGRAM B3). Start sewing at $\frac{1}{4}$ " of the border, stitching all the layers. Do the same in the four corners of the quilt.
- Stop stitching before you reach the last 5 or 6 inches. Cut the threads and remove the quilt from under the machine presser foot. Lay the loose ends of the binding flat along the quilt edge, folding the ends back on themselves where they meet.

- Press them together to form a crease. Using this crease as the stitching line, sew the two open ends of the binding with right sides together (you can help yourself marking with a pencil if the crease is difficult to see).
- Trim seam to $\frac{1}{4}$ " and press open. Complete the sewing. Turn binding to back of the quilt, turn raw edge inside and stitch by hand using blind stitch.



CONGRATULATIONS!

