

# Flaunt

{ Featuring **PETAL & PLUME** Collection }



Art Gallery  
FABRICS

FREE PROJECT SHEET

DESIGNED BY bari j.



QUILT DESIGNED BY **bari j.**

Instructions Written by Flaun Cline of I Plead Quilty

*Flaunt*

FINISHED SIZE: 85" x 85"

**PETAL**  
and *plume*  
By **bari j.**



FUCHSIAD FINCH



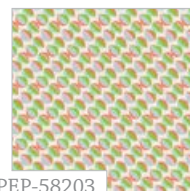
PEP-58200  
Nib and Pluck Ursinia



PEP-58201  
Rumpled Phlox



PEP-58202  
Illusionist Vine Jay



PEP-58203  
Drawn Mist Fresa



PEP-58204  
Panache Profundo



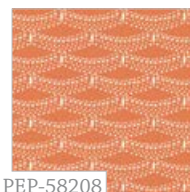
PEP-58205  
Nomenclature Keen



PEP-58206  
Hyperflora Twee



PEP-58207  
Seeing Stars Lime



PEP-58208  
Rumpled Nectarine



PEP-58209  
Peacock Waltz Gala

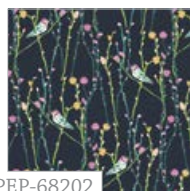
TEALED ASTER



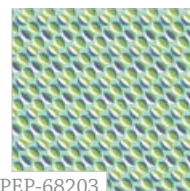
PEP-68200  
Nib and Pluck Zinnia



PEP-68201  
Rumpled Gentian



PEP-68202  
Illusionist Vine Tui



PEP-68203  
Drawn Mist Kiwi



PEP-68204  
Panache Fresco



PEP-68205  
Nomenclature Soft



PEP-68206  
Hyperflora Sea



PEP-68207  
Seeing Stars Violet



PEP-68208  
Rumpled Sour



PEP-68209  
Peacock Waltz Festal

QUILT DESIGNED BY *bari j.*

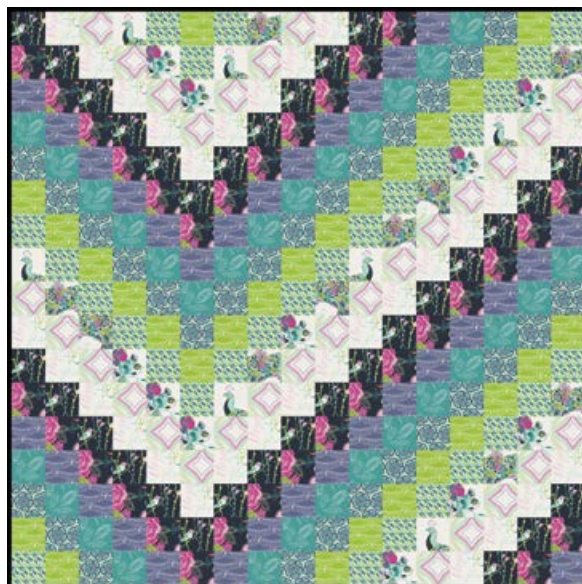
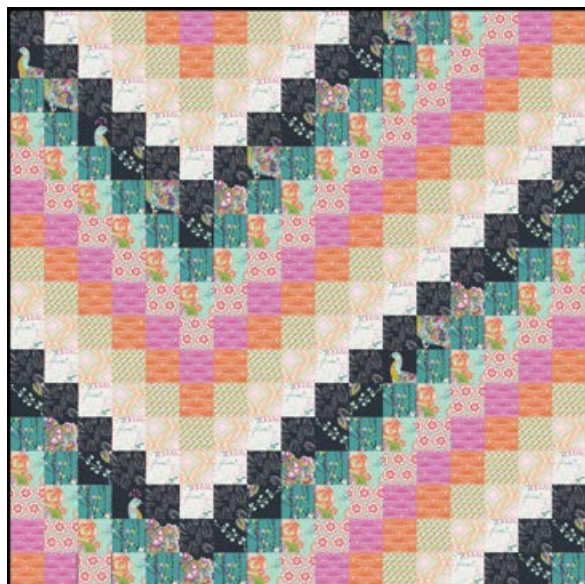
Instructions Written by Flaun Cline of I Plead Quilty

FABRICS DESIGNED BY BARI J. FOR  
ART GALLERY FABRICS



*Flaunt*

FINISHED SIZE: 85" x 85"



## FABRIC REQUIREMENTS

### Fuchsiad Finch

Fabric <b>A</b>	PEP-58205	7/8 yd.
Fabric <b>B</b>	PEP-58207	7/8 yd.
Fabric <b>C</b>	PEP-58203	7/8 yd.
Fabric <b>D</b>	PEP-58208	7/8 yd.
Fabric <b>E</b>	PEP-58201	7/8 yd.
Fabric <b>F</b>	PEP-58206	7/8 yd.
Fabric <b>G</b>	PEP-58200	7/8 yd.
Fabric <b>H</b>	PEP-58202	7/8 yd.
Fabric <b>I</b>	PEP-58209	7/8 yd.
Fabric <b>J</b>	PEP-58204	7/8 yd.

### Backing Fabric

PEP- 58205 5 yds. (suggested)

### Binding Fabric

PE-428 - 2/3 yd.

## FABRIC REQUIREMENTS

### Tealed Aster

Fabric <b>A</b>	PEP-68205	7/8 yd.
Fabric <b>B</b>	PEP-68207	7/8 yd.
Fabric <b>C</b>	PEP-68209	7/8 yd.
Fabric <b>D</b>	PEP-68203	7/8 yd.
Fabric <b>E</b>	PEP-68208	7/8 yd.
Fabric <b>F</b>	PEP-68206	7/8 yd.
Fabric <b>G</b>	PEP-68204	7/8 yd.
Fabric <b>H</b>	PEP-68201	7/8 yd.
Fabric <b>I</b>	PEP-68200	7/8 yd.
Fabric <b>J</b>	PEP-68202	7/8 yd.

### Backing Fabric

PEP- 68205 5 yds. (suggested)

### Binding Fabric

PE-428 - 2/3 yd.



## CUTTING DIRECTIONS

*1/4" seam allowances are included.*

- Cut Four (4) 5 1/2" x WOF strips from Fabric A-J

## BLOCK ASSEMBLY

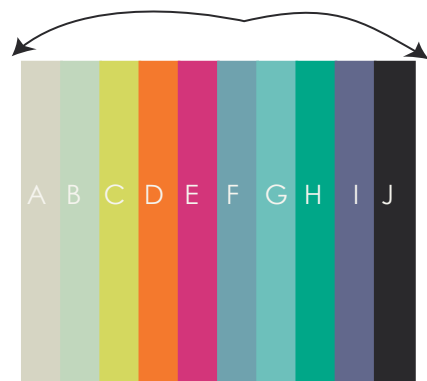
*Sew all rights sides together with 1/4" seam allowance.*

- Layout strips in order from A-J following diagram 1.



Diagram 1

- Sew together one 5 1/2" WOF strip from each fabric in order (from A-J) to create four identical strip sets.
- DO NOT press until complete.
- Press in alternating order. (first seam to the left, second to the right, and so on)
- Sew the final seam in each strip set to create 4 tube sets. (Diagram 2)



Sew Strip A to Strip J

Diagram 2

- Lay each tube set on your cutting mat.
- Cross-cut each tube set into 5 1/2" sections, for a total of 32 cross-cut sections.
- Remove stitches from sections in the following order:
- **A** - 2 sections between fabrics **G** and **H** (this is the first section in the lower right of your quilt top)



Diagram 3

- **B** - 2 sections between fabrics **H** and **I**.



Diagram 4

- **C** - 2 sections between fabrics **I** and **J**.



Diagram 5

- **D** - 2 sections between fabrics **J** and **A**.



Diagram 6

- **E** - 2 sections between fabrics **A** and **B**.



Diagram 7

- **F** - 2 sections between fabrics **B** and **C**.



Diagram 8

- **G** - 2 sections between fabrics **C** and **D**.



Diagram 9

- **H** - 2 sections between fabrics **D** and **E**.



Diagram 10

- **I** - 2 sections between fabrics **E** and **F**.



Diagram 11

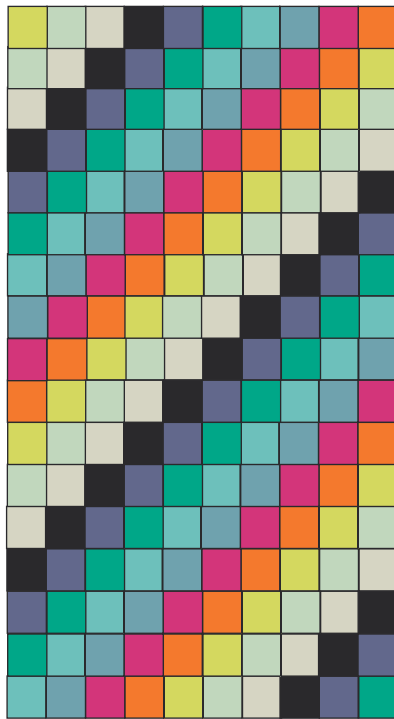
- **J** - 2 sections between fabrics **F** and **G**.



Diagram 12

- Using either a design wall or table top, lay out your sections in order from bottom to top from A through J, then continue again from A through G sew together sections A through J and A through G in order to create Segment One (Diagram 13)





Segment One

Diagram 13

- Remove stitches from sections in the following order:
- A- 2 sections between fabrics G and H.



Diagram 14

- From one of the sections from Diagram 14, remove stitches between fabrics E and D, discard (or place in your scrap bin) the squares for fabrics E, F, and G that you just seam ripped.

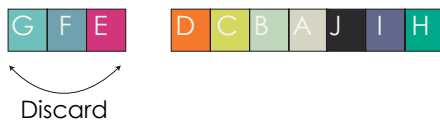


Diagram 15

- Sew together the long and short sections, connecting fabric G on the long piece to fabric H on the short piece.



Diagram 16

- 2 sections between fabrics H and I.



Diagram 17

- From one of these sections, remove stitches between fabrics F and E, discard (or place in your scrap bin) the squares for fabrics H, G, and F that you just seam ripped.



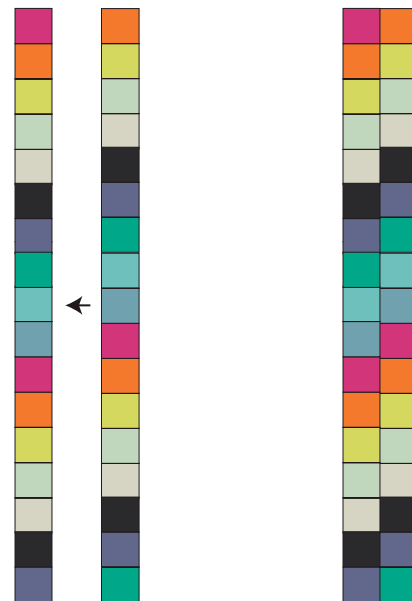
Diagram 18

- Sew together the long and short sections, connecting fabric H on the long piece to fabric I on the short piece.



Diagram 19

- Sew together these two long pieces to create Segment Two.



Segment Two

Diagram 20

- Remove stitches from sections in the following order:
- A** - 2 sections between fabrics **C** and **D**, then between fabrics **H** and **I** (this is the first section in the lower left of your quilt top)



Section A1



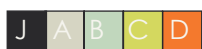
Section A2

Diagram 21

- B** - 2 sections between fabrics **D** and **E**, then between fabrics **I** and **J**.



Section B1



Section B2

Diagram 22

- C** - 2 sections between fabrics **E** and **F**, then between fabrics **J** and **A**.



Section C1



Section C2

Diagram 23

- D** - 2 sections between fabrics **F** and **G**, then between fabrics **A** and **B**.



Section D1



Section D2

Diagram 24

- E** - 2 sections between fabrics **G** and **H**, then between fabrics **B** and **C**.



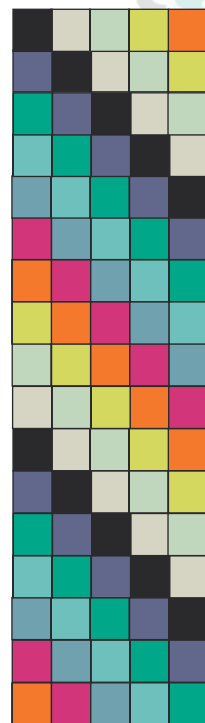
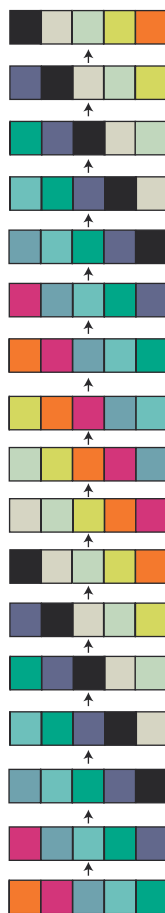
Section E1



Section E2

Diagram 25

- As before, using either a design wall or table top, lay out your sections in order from bottom to top. From Section A1 through Section E1 and Section A2 through Section E2, then continue again from Section A1 through Section E1 and Section A2 through Section B2.
- Sew together following diagram 26 to create Segment Three (the second set of section C2 through E2 can be discarded or placed in your scrap bin)



Segment Three

Diagram 26

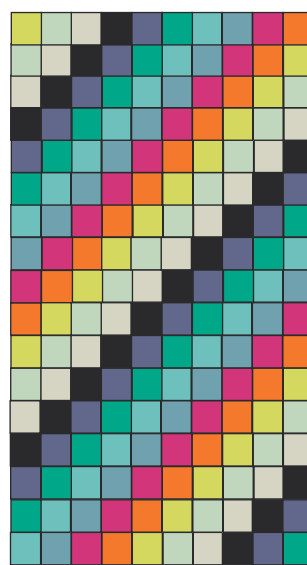
- Sew Segment Three to Segment Two, then Segment Three/Two to Segment One. You are now finished with your quilt top!



Segment Three



Segment Two



Segment One

Diagram 27

## QUILT ASSEMBLY

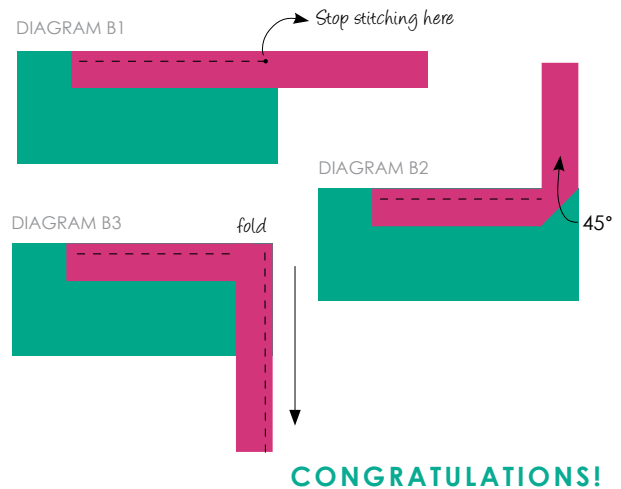
*Sew right sides together.*

- Place BACKING FABRIC on a large surface wrong side up. Stretch it with masking tape against that surface.
- Place BATTING on top of backing fabric.
- Place TOP on top of the batting with right side facing up. Smooth away wrinkles using your hands.
- Pin all layers together and baste with basting thread, using long stitches. You can also use safety pins to join the layers.
- Machine or hand quilt starting at the center and working towards the corners. Remember that quilting motives are a matter of personal preference. Have fun choosing yours!
- After you finished, trim excess of any fabric or batting, squaring the quilt to proceed to bind it.

## BINDING

*Sew right sides together.*

- Cut enough strips 1½" wide by the width of the fabric **PE-428** to make a final strip 350" long. Start sewing the binding strip in the middle of one of the sides of the quilt, placing the strip right side down and leaving an approximated 5" tail. Sew with ¼" seam allowance (using straight stitch), aligning the strip's raw edge with the quilt top's raw edge.
- Stop stitching ¼" before the edge of the quilt (DIAGRAM B 1). Clip the threads. Remove the quilt from under the machine presser foot. Fold the strip in a motion of 45° and upward, pressing with your fingers (DIAGRAM B2). Hold this fold with your finger, bring the strip down in line with the next edge, making a horizontal fold that aligns with the top edge of the quilt (DIAGRAM B3). Start sewing at ¼" of the border, stitching all the layers. Do the same in the four corners of the quilt.
- Stop stitching before you reach the last 5 or 6 inches. Cut the threads and remove the quilt from under the machine presser foot. Lay the loose ends of the binding flat along the quilt edge, folding the ends back on themselves where they meet. Press them together to form a crease. Using this crease as the stitching line, sew the two open ends of the binding with right sides together (you can help yourself marking with a pencil if the crease is difficult to see).
- Trim seam to ¼" and press open. Complete the sewing. Turn binding to back of the quilt, turn raw edge inside and stitch by hand using blind stitch.



*Feel the difference*

For more free patterns visit:

[artgalleryfabrics.com](http://artgalleryfabrics.com)

NOTE: While all possible care has been taken to ensure the accuracy of this pattern, we are not responsible for printing errors or the way in which individual work varies. Please read instructions carefully before starting the construction of this quilt. If desired, wash and iron your fabrics before starting to cut.

© 2014 Courtesy of Art Gallery Quilts LLC.  
All Rights Reserved.