

# Enjoy the Ride

{ FEATURING CLETA COLLECTION }



FREE PROJECT SHEET

DESIGNED BY : AGF studio



QUILT DESIGNED BY AGF STUDIO

# Enjoy the Ride

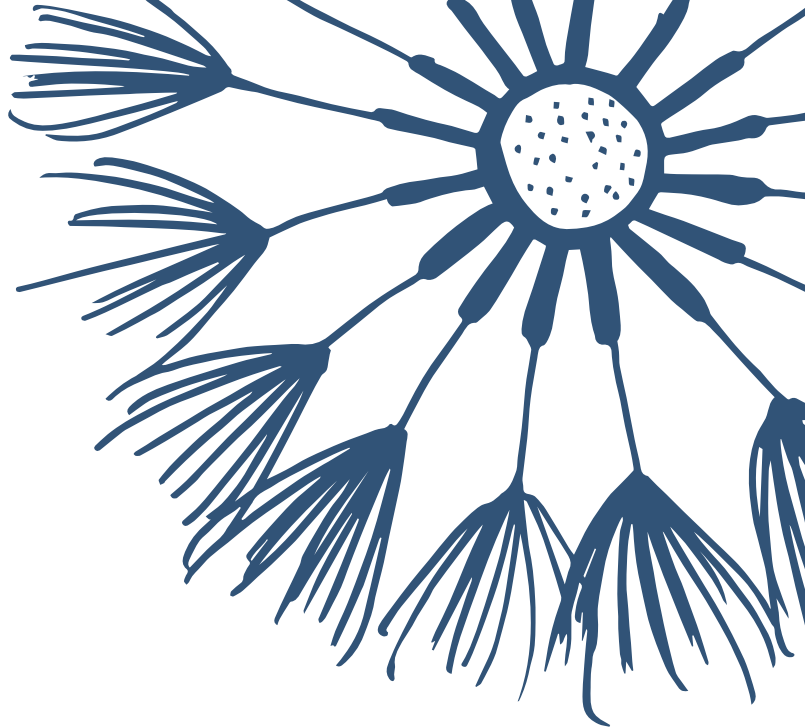
FINISHED SIZE: 60" X 62"

To download the instructions  
for this pattern visit

[artgalleryfabrics.com](http://artgalleryfabrics.com)



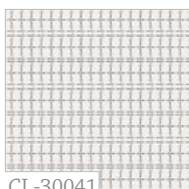
by AGF studio



PRISMATIC RIDE



CL-30040  
Cycle of Life Sol



CL-30041  
Fromabove Kaolin



CL-30042  
Riding Diary Burst



CL-30043  
Twiggged Path Sunlit



CL-30044  
Linked with Night



CL-30045  
Translate Bike Multi



CL-30046  
Canopy Beams



CL-30047  
Tire Buds Irid



CL-30048  
Handlebar Tricks Grit

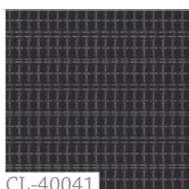


CL-30049  
Bikeleidoscope Jet

MONOCHROME RIDE



CL-40040  
Cycle of Life Luna



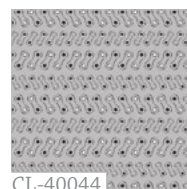
CL-40041  
Fromabove Blacklin



CL-40042  
Riding Diary BW



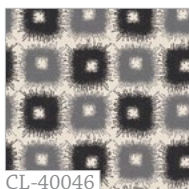
CL-40043  
Twiggged Path Starred



CL-40044  
Linked with Wind



CL-40045  
Translate Bike Nero



CL-40046  
Canopy Shadows



CL-40047  
Tire Buds Lumi



CL-40048  
Handlebar Tricks Gris



CL-40050  
Carved Gear



QUILT DESIGNED BY AGF STUDIO

# Enjoy the Ride

FINISHED SIZE: 60" X 62"

BLOCK SIZE: 7 1/8" X 11 1/4"

[artgalleryfabrics.com](http://artgalleryfabrics.com)

## FABRIC REQUIREMENTS

Fabric A	CL-40040	5/8 yd.
Fabric B	CL-30040	5/8 yd.
Fabric C	CL-30049	1 1/8 yd.
Fabric D	CL-40046	1/2 yd.
Fabric E	CL-30042	1 yd.
Fabric F	CL-40050	7/8 yd.
Fabric G	PE-431	1 1/8 yd.
Fabric H	PE-421	5/8 yd.
Fabric I	PE-436	5/8 yd.

### Backing Fabric

CL-30047 4 yds. (suggested)

### Binding Fabric

CL-40050 (Fabric F) (included)

NOTE: While all possible care has been taken to ensure the accuracy of this pattern, we are not responsible for printing errors or the way in which individual work varies. Please read instructions carefully before starting the construction of this quilt. If desired, wash and iron your fabrics before starting to cut.

© 2014 Courtesy of Art Gallery Quilts LLC.  
All Rights Reserved.

## CUTTING DIRECTIONS

1/4" seam allowances are included.

### FOR BLOCK A

Ten (10) fussy cut trees from fabric **A\***

Ten (10) fussy cut trees from fabric **B\***

Forty (40) 2 1/2" x 3 1/2" strips from fabric **C**

Ten (10) 7 3/4" x 6 1/8" rectangles from fabric **H**

Ten (10) 7 3/4" x 6 1/8" rectangles from fabric **I**

Forty (40) 1 1/4" x 7 3/4" strips from fabric **G**

Eighty (80) 2 1/2" x 2 5/8" strips from fabric **G**

### FOR BLOCK B

Twenty (20) 3" x 7 3/4" pieces from fabric **D**

Forty (40) 3" x 5 1/2" rectangles from fabric **C**

Eighty (80) 1 5/8" x 3" strips from fabric **E**

Eighty (80) 1 3/8" x 7 3/4" strips from fabric **E**

### FOR SASHING

Eight (8) 2" x WOF strips from fabric **F**

\*for this quilt you will also need to cut your Steam-A-Seam2 in the shape of the trees so we suggest that you lightly press one side of it to the wrong side of fabrics A and B and cut both layers simultaneously.

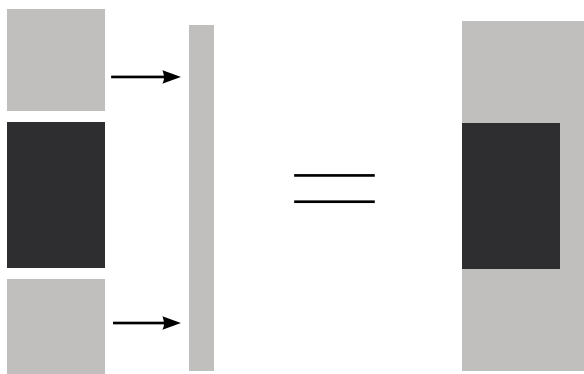
## BLOCK CONSTRUCTION

Sew all rights sides together with  $\frac{1}{4}$ " seam allowance.  
Align at the center. Press open.

### BLOCK A

- You will construct a total of twenty of these blocks. Ten of them have fabric **A** trees that will go on top of fabric **H** rectangles, and the other ten will have fabric **B** trees that go on top of fabric **I** rectangles.
- Step 1:** Sew one  $2\frac{1}{2}$ " x  $2\frac{5}{8}$ " rectangle from fabric **G** on each side of one  $2\frac{1}{2}$ " x  $3\frac{1}{2}$ " rectangle from fabric **C**. Match them on the  $2\frac{1}{2}$ " sides.
- Press seams open.
- To one side of the previously made piece you will sew one  $1\frac{1}{4}$ " x  $7\frac{3}{4}$ " strip from fabric **G**.
- Construct a total of forty of the previous pieces (DIAGRAM 1)

(DIAGRAM 1)



- Step 2:** The next step is to sew one rectangle from fabric **H** (or **I**) in between two of the pieces made in **step 1**. Make sure that the pieces mirror each other and that the  $1\frac{1}{4}$ " x  $7\frac{3}{4}$ " strips of fabric **G** are placed towards the outside of the block. (DIAGRAM 2).
- Press seams open.

(DIAGRAM 2)



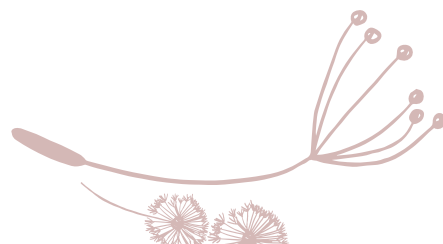
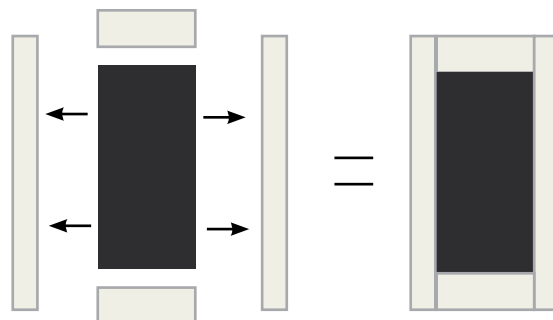
- Step 3:** The last step is to applique the corresponding color tree to each rectangle by centering it on the solid color rectangle and holding it in place with the Steam-A-Seam2. We used a straight stitch  $\frac{1}{16}$  from the edge to do the applique and left the edges raw for a grungier effect.



### BLOCK B

- You will construct a total of twenty of these blocks.
- Step 1:** Sew one  $1\frac{5}{8}$ " x 3" strip from fabric **E** on each side of one 3" x  $5\frac{1}{2}$ " rectangle from fabric **C**. Match them on the 3" sides.
- Press seams open.
- To each side of the previously made piece you will sew one  $1\frac{3}{8}$ " x  $7\frac{3}{4}$ " strip from fabric **E**.
- Press seams open
- Construct a total of forty-six of the previous pieces (DIAGRAM 3)

(DIAGRAM 3)



- **Step 2:** The next and final step to finish **BLOCK B** is to sew one rectangle from fabric **D** in between two of the pieces made in step 1 (DIAGRAM 4)
- Press seams open.

(DIAGRAM 4)



- **Once you are finished sewing all blocks A AND B, trim them to 7 5/8" x 11 3/4".**

## SASHING CONSTRUCTION

*Sew all rights sides together with 1/4" seam allowance. Press open.*

- Create four long strips by pairing the eight strips you cut for sashing and sewing them on the shorter side

## ASSEMBLING THE TOP

*Sew all rights sides together with 1/4" seam allowance. Press open.*

- This quilt is made of five columns of alternating blocks with one strip of sashing in between each column.
- Sew all the columns individually first.
- Start from the left following a vertical order.
- Once you finish sewing the columns, sew the sashing strips in between the columns making sure you align them at the center with the second and fourth columns.
- Follow the cover photo to help you in the placement of the blocks.
- Press seams open as you sew.

## QUILT ASSEMBLY

*Sew right sides together.*

- Place **BACKING FABRIC** on a large surface wrong side up. Stretch it with masking tape against that surface.
- Place **BATTING** on top of backing fabric.
- Place **TOP** on top of the batting with right side facing up. Smooth away wrinkles using your hands.
- Pin all layers together and baste with basting thread, using long stitches. You can also use safety pins to join the layers.

- Machine or hand quilt starting at the center and working towards the corners. Remember that quilting motifs are a matter of personal preference. Have fun choosing yours!
- After you finished, trim excess of any fabric or batting, squaring the quilt to proceed to bind it.

## BINDING

*Sew right sides together.*

- Cut enough strips 1 1/2" wide by the width of the fabric **F** to make a final strip 280" long. Start sewing the binding strip in the middle of one of the sides of the quilt, placing the strip right side down and leaving an approximated 5" tail. Sew with 1/4" seam allowance (using straight stitch), aligning the strip's raw edge with the quilt top's raw edge.
- Stop stitching 1/4" before the edge of the quilt (DIAGRAM B 1). Clip the threads. Remove the quilt from under the machine presser foot. Fold the strip in a motion of 45° and upward, pressing with your fingers (DIAGRAM B2). Hold this fold with your finger, bring the strip down in line with the next edge, making a horizontal fold that aligns with the top edge of the quilt (DIAGRAM B3). Start sewing at 1/4" of the border, stitching all the layers. Do the same in the four corners of the quilt.
- Stop stitching before you reach the last 5 or 6 inches. Cut the threads and remove the quilt from under the machine presser foot. Lay the loose ends of the binding flat along the quilt edge, folding the ends back on themselves where they meet. Press them together to form a crease. Using this crease as the stitching line, sew the two open ends of the binding with right sides together (you can help yourself marking with a pencil if the crease is difficult to see).
- Trim seam to 1/4" and press open. Complete the sewing. Turn binding to back of the quilt, turn raw edge inside and stitch by hand using blind stitch.

